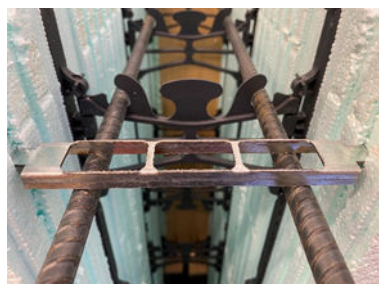

PRODUCT DESCRIPTION

Nudura RPD Dovetail Insert is designed to slide into the dovetails on the inside of the form to support vertical reinforcement where support does not already exist. The RPD Dovetail Insert is manufactured from galvanized steel and is 1" (25 mm) wide. There are multiple reinforcement bar positioning locations which are 7/8" (22 mm) wide and a minimum of 1 3/8" (35 mm) long (length of holes varies depending on size of insert). This product is designed to ensure a minimum 3/4" (19 mm) concrete coverage from the side of the foam, which is the minimum coverage as dictated by ACI regulations.



BASIC USES

The RPD Dovetail Insert is designed to support the two vertical bars required at the side of an opening, eliminating the need to tie wire or zip tie these bars in place. Other uses include supporting vertical reinforcement in a wall using fiber reinforcement (if vertical reinforcement is required), in a column or cage, at center to center locations which differ from increments of 8" (203 mm) o/c, or any other area where the vertical reinforcement needs additional support.

FEATURES & BENEFITS

- Slides into place with dovetail design
- Designed to clip over FORM-LOCK to secure it in place
- Able to support vertical lintel steel at openings, or other vertical reinforcement in the main field of the wall
- Eliminates the need to tie wire or zip tie rebar in place

AVAILABILITY

Nudura's RPD Dovetail Insert is available in five widths to match Nudura's form concrete core widths (4", 6", 8", 10", 12" (102 mm, 152 mm, 203 mm, 254 mm, 305 mm)). The RPD Dovetail Inserts are available from your local Nudura distributor. For Distributor locations, visit <https://www.nudura.com/>

PACKAGING

The RPD Dovetail Inserts are packaged 60 pieces in a durable cardboard box.

- Box Length: 10" (254 mm)
- Box Width: 6" (152 mm)
- Box Height: Varies- 10" (254 mm) to 14" (356 mm)
- Box Weight: Varies- 15 lbs (6.8 kg) to 20 lbs (9 kg)

STORAGE

Store the RPD Dovetail Inserts in their original, undamaged packaging in a clean, dry location.

Please refer to our website at www.nudura.com for the most up-to-date Product Data Sheets.

NOTE: All Nudura Safety Data Sheets (SDS) are in alignment with the Globally Harmonized System of Classification and Labelling of Chemicals (GHS) requirements.

RPDDI_DS/0225

Tremco Construction Products Group (CPG) brings together Tremco CPG Inc. and its Dryvit and Nudura brands; Willseal; Prebuck LLC; Tremco Barrier Solutions, Inc.; Weatherproofing Technologies, Inc. and its Pure Air Control Services and Canam Building Envelope Specialists offerings; and Weatherproofing Technologies Canada, Inc.



nudura.com | 866.468.6299



Construction Products Group

3735 Green Rd. | Beachwood, OH 44122
800.321.7906 | tremcocpg.com