

NOTES:

1) FOR OPTIMAL REINFORCEMENT PLACEMENT IN THE NUDURA FORM, SPACING OF HORIZONTAL REINFORCEMENT TO BE SPECIFIED AT 18" (457mm) O.C. AND VERTICAL REINFORCEMENT TO BE SPECIFIED AT MULTIPLES OF 8" (203mm) O.C. REFER TO NUDURA REINFORCEMENT PLACEMENT DETAILS.

This detail is for general informational purposes only. The project design professional determines, in its sole discretion, whether this detail or a functionally equivalent detail is best suited for the project with respect to any architecture, engineering, and design requirements, including any local building code requirements. If this document is not reviewed and the product is not approved for use by a licensed design professional, the customer agrees that the detail may contain substantive flaws requiring correction, and hereby releases Tremco CPG Inc. from any and all liability related to the design and installation of the product. This detail is subject to change without notice. Contact Tremco to ensure you have the most recent version.

Non-Combustible Construction - Slab on Grade

Detail: Nudura 6" (152mm) Form Unit, Stem Wall at Slab on Grade,
Exterior Finish as Specified, Non-Insulated

File Name:

Drawn by: NL

Checked by: KS

Scale: 1:8

B6C01

Revision #: 05

Revised by: KAB

Date: 3/13/2024

www.tremcocpg.com



Nudura Technical Support: 866-468-6299
International: +1 705-726-9499



Construction Products Group

NUDURA 6" (152mm)
STANDARD FORM UNIT

MIN. $\frac{1}{2}$ " (13mm) GYPSUM BOARD

TREMCO EXOAIR 230 OR
FUNCTIONAL EQUIVALENT

WET SET DOWELS TO MATCH
VERTICAL REINFORCEMENT
BETWEEN POURS OR AS
SPECIFIED

EXTERIOR FINISH
AS SPECIFIED

HORIZ/VERT REINFORCEMENT
AS PER CODE OR AS SPECIFIED
(SEE NOTE 1)

GRANULAR FILL

TREMCO/NUDURA APPROVED
PARGE COAT

INSULATED CONCRETE
SLAB

NOTES:

1) FOR OPTIMAL REINFORCEMENT PLACEMENT IN THE NUDURA FORM, SPACING OF HORIZONTAL REINFORCEMENT TO BE SPECIFIED AT 18" (457mm) O.C. AND VERTICAL REINFORCEMENT TO BE SPECIFIED AT MULTIPLES OF 8" (203mm) O.C. REFER TO NUDURA REINFORCEMENT PLACEMENT DETAILS.

This detail is for general informational purposes only. The project design professional determines, in its sole discretion, whether this detail or a functionally equivalent detail is best suited for the project with respect to any architecture, engineering, and design requirements, including any local building code requirements. If this document is not reviewed and the product is not approved for use by a licensed design professional, the customer agrees that the detail may contain substantive flaws requiring correction, and hereby releases Tremco CPG Inc. from any and all liability related to the design and installation of the product. This detail is subject to change without notice. Contact Tremco to ensure you have the most recent version.

Non-Combustible Construction - Slab on Grade



Nudura Technical Support: 866-468-6299
International: +1 705-726-9499

Detail: Nudura 6" (152mm) Form Unit, Stem Wall at Slab on Grade,
Exterior Finish as Specified, Insulated

Drawn by: JN

Checked by: KS

Scale: 1:8

Revision #: 06

Revised by: KAB

Date: 3/13/2024

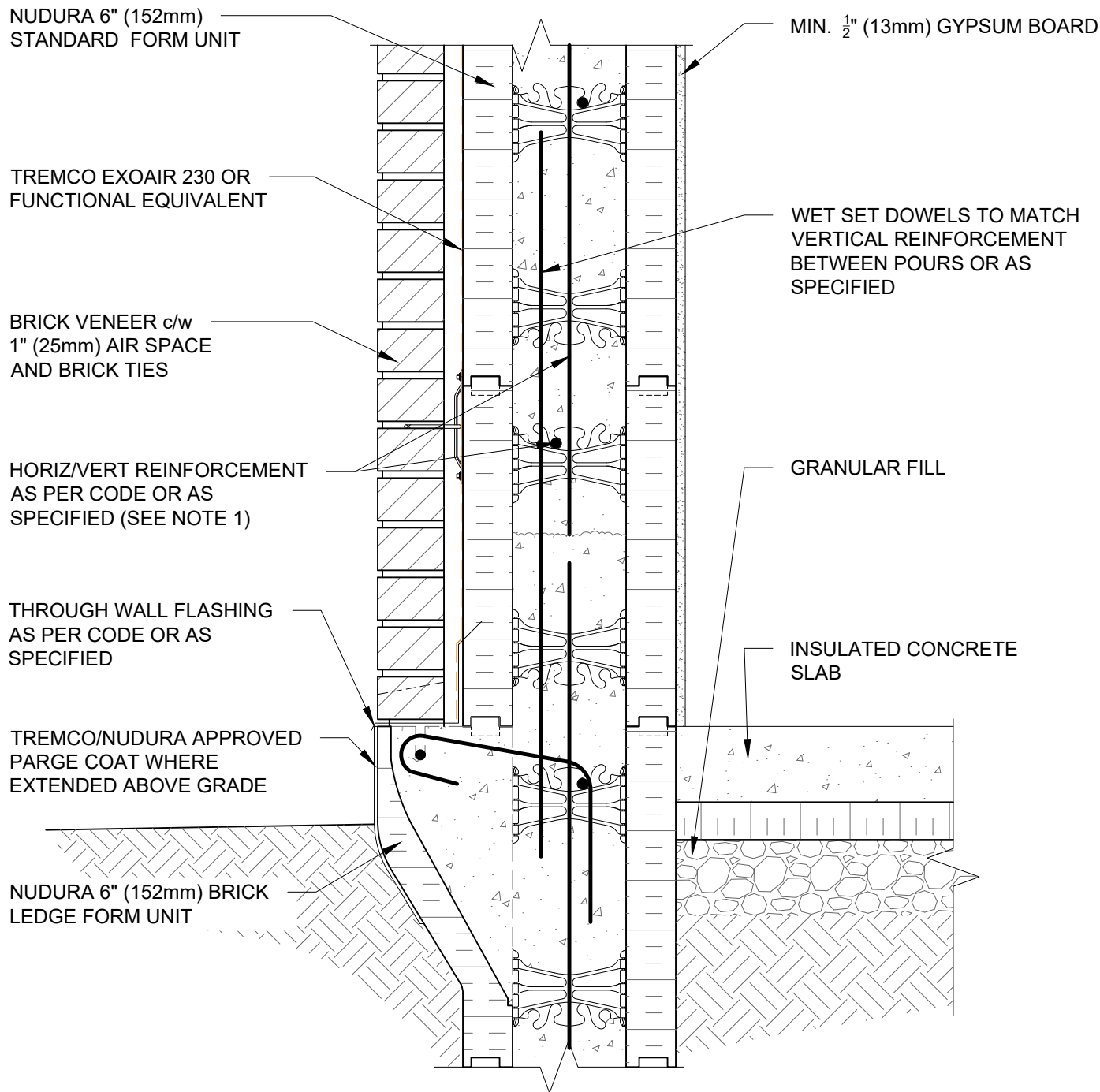
www.tremcocpg.com

File Name:

B6C07



Construction Products Group



NOTES:

1) FOR OPTIMAL REINFORCEMENT PLACEMENT IN THE NUDURA FORM, SPACING OF HORIZONTAL REINFORCEMENT TO BE SPECIFIED AT 18" (457mm) O.C. AND VERTICAL REINFORCEMENT TO BE SPECIFIED AT MULTIPLES OF 8" (203mm) O.C. REFER TO NUDURA REINFORCEMENT PLACEMENT DETAILS.

This detail is for general informational purposes only. The project design professional determines, in its sole discretion, whether this detail or a functionally equivalent detail is best suited for the project with respect to any architecture, engineering, and design requirements, including any local building code requirements. If this document is not reviewed and the product is not approved for use by a licensed design professional, the customer agrees that the detail may contain substantive flaws requiring correction, and hereby releases Tremco CPG Inc. from any and all liability related to the design and installation of the product. This detail is subject to change without notice. Contact Tremco to ensure you have the most recent version.

Non-Combustible Construction - Slab on Grade



Nudura Technical Support: 866-468-6299
International: +1 705-726-9499

Detail: Nudura 6" (152mm) Form Unit, Stem Wall at Slab on Grade,
Brick Veneer Finish, Insulated

Drawn by: TVC

Checked by: KS

Scale: 1:8

Revision #: 04

Revised by: KAB

Date: 3/13/2024

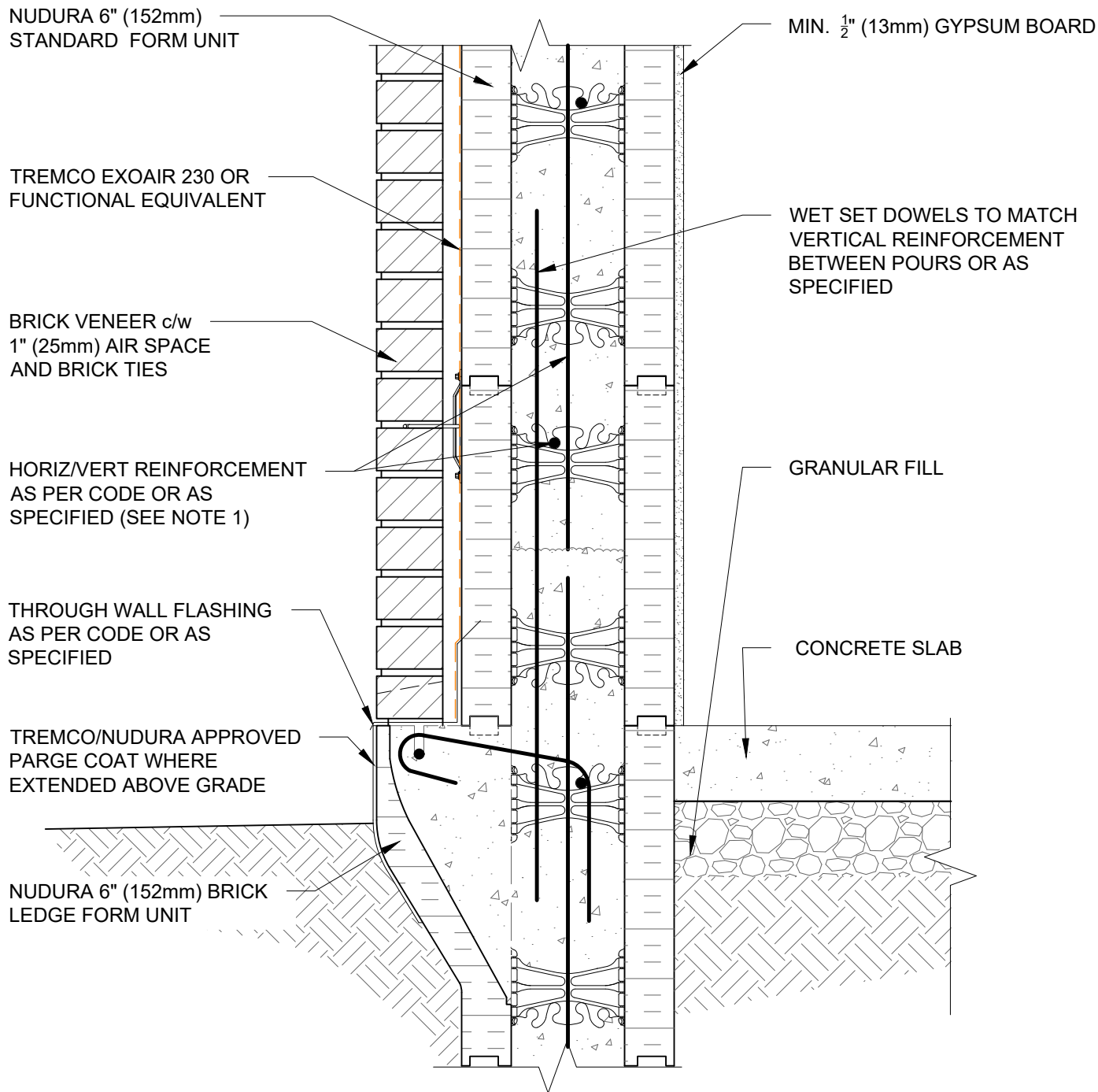
File Name:

B6C10



Construction Products Group

www.tremcocpg.com



NOTES:

1) FOR OPTIMAL REINFORCEMENT PLACEMENT IN THE NUDURA FORM, SPACING OF HORIZONTAL REINFORCEMENT TO BE SPECIFIED AT 18" (457mm) O.C. AND VERTICAL REINFORCEMENT TO BE SPECIFIED AT MULTIPLES OF 8" (203mm) O.C. REFER TO NUDURA REINFORCEMENT PLACEMENT DETAILS.

This detail is for general informational purposes only. The project design professional determines, in its sole discretion, whether this detail or a functionally equivalent detail is best suited for the project with respect to any architecture, engineering, and design requirements, including any local building code requirements. If this document is not reviewed and the product is not approved for use by a licensed design professional, the customer agrees that the detail may contain substantive flaws requiring correction, and hereby releases Tremco CPG Inc. from any and all liability related to the design and installation of the product. This detail is subject to change without notice. Contact Tremco to ensure you have the most recent version.

Non-Combustible Construction - Slab on Grade



Nudura Technical Support: 866-468-6299
International: +1 705-726-9499

Detail: Nudura 6" (152mm) Form Unit, Stem Wall at Slab on Grade,
Brick Veneer Finish, Non-Insulated

Drawn by: TVC

Checked by: KS

Scale: 1:8

Revision #: 05

Revised by: KAB

Date: 3/13/2024

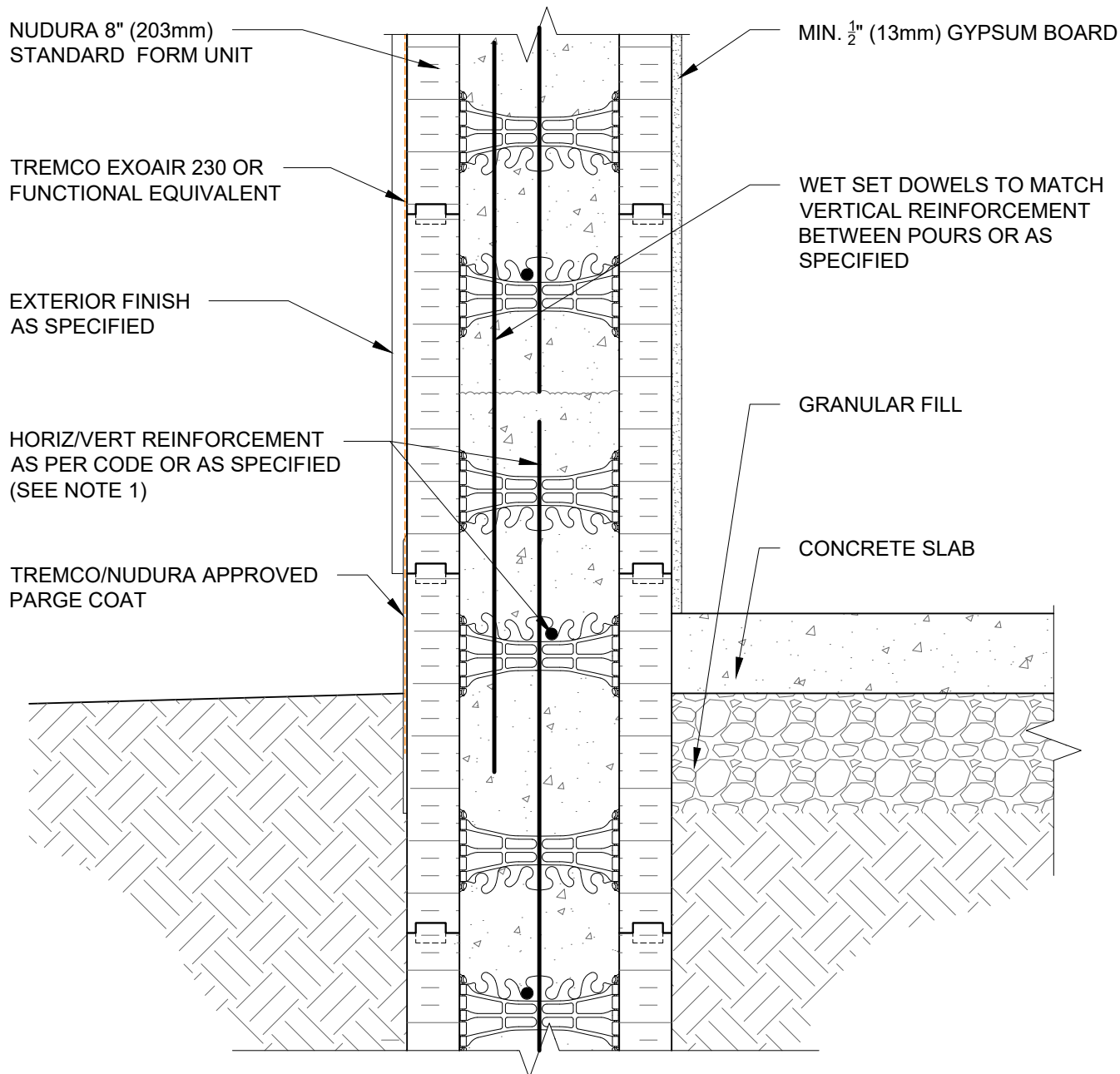
www.tremcocpg.com

File Name:

B6C11



Construction Products Group





NOTES:

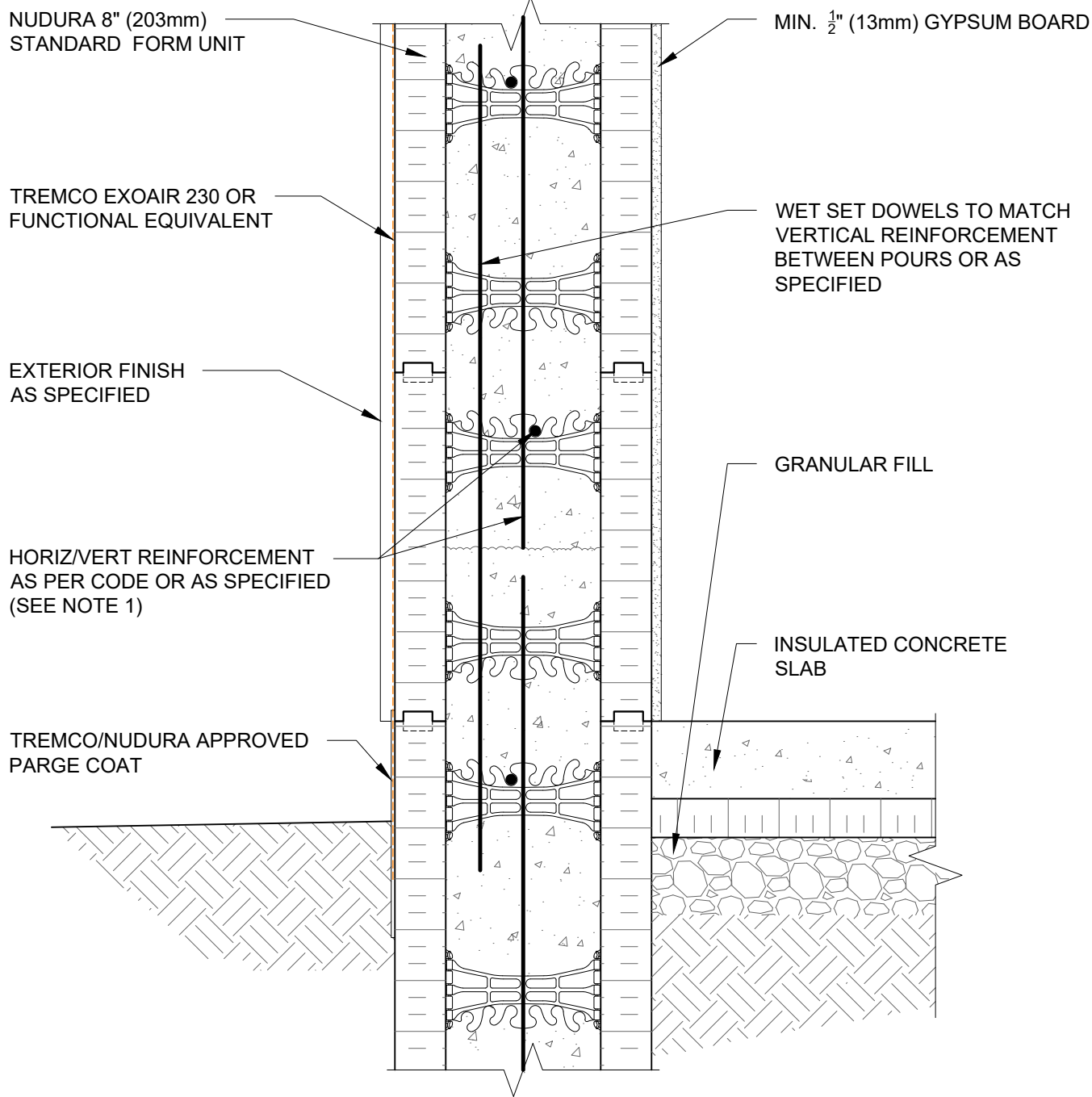
1) FOR OPTIMAL REINFORCEMENT PLACEMENT IN THE NUDURA FORM, SPACING OF HORIZONTAL REINFORCEMENT TO BE SPECIFIED AT 18" (457mm) O.C. AND VERTICAL REINFORCEMENT TO BE SPECIFIED AT MULTIPLES OF 8" (203mm) O.C. REFER TO NUDURA REINFORCEMENT PLACEMENT DETAILS.

This detail is for general informational purposes only. The project design professional determines, in its sole discretion, whether this detail or a functionally equivalent detail is best suited for the project with respect to any architecture, engineering, and design requirements, including any local building code requirements. If this document is not reviewed and the product is not approved for use by a licensed design professional, the customer agrees that the detail may contain substantive flaws requiring correction, and hereby releases Tremco CPG Inc. from any and all liability related to the design and installation of the product. This detail is subject to change without notice. Contact Tremco to ensure you have the most recent version.

Non-Combustible Construction - Slab on Grade

 <div>Nudura Technical Support: 866-468-6299 International: +1 705-726-9499</div>	Detail: Nudura 8" (203mm) Form Unit, Stem Wall at Slab on Grade, Exterior Finish as Specified, Non-Insulated			File Name: B8C06
	Drawn by: TVC	Checked by: KS	Scale: 1:8	
	Revision #: 04	Revised by: KAB	Date: 3/13/2024	
	www.tremcocpg.com			
	 Construction Products Group			


Construction Products Group





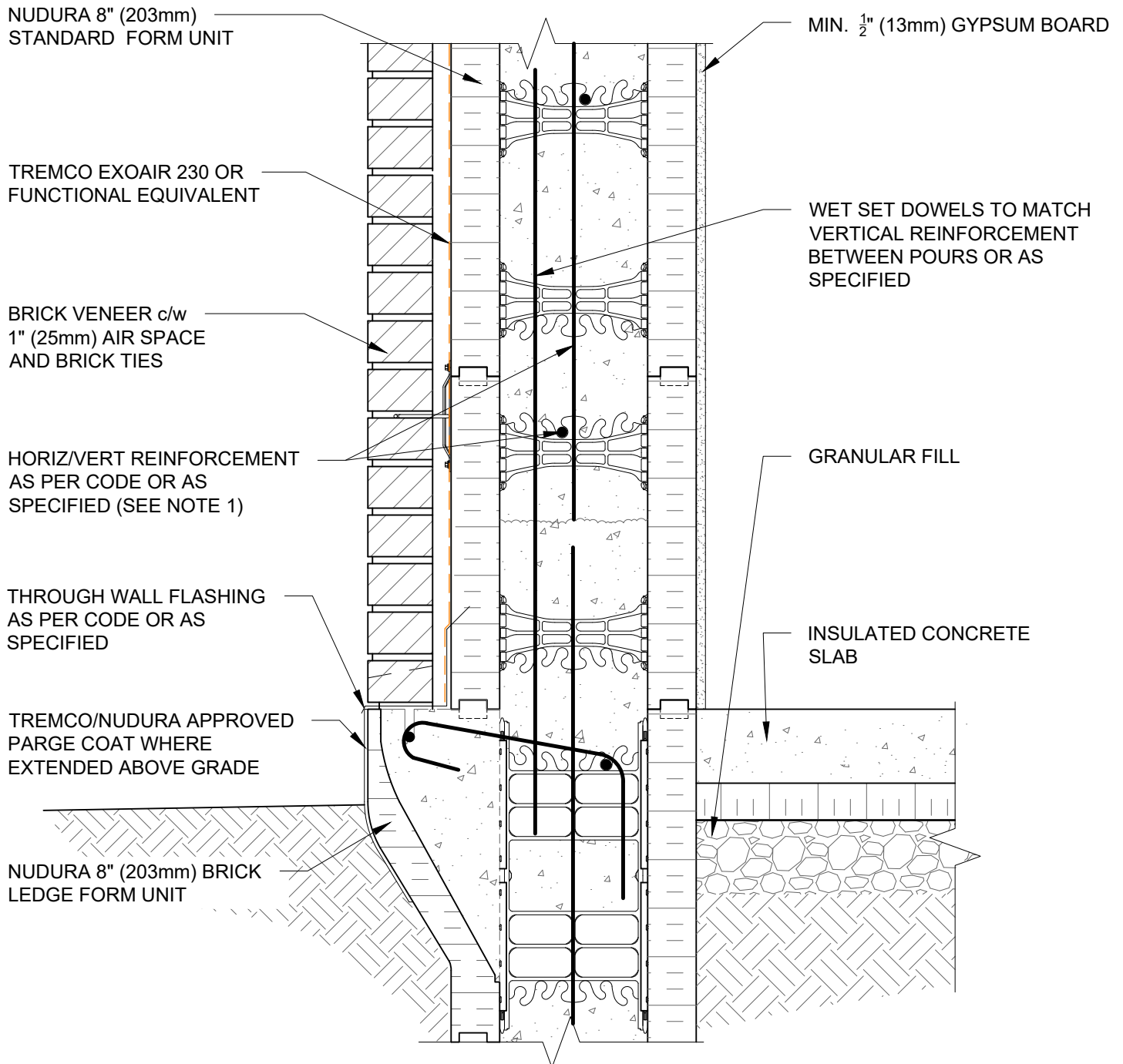
NOTES:

1) FOR OPTIMAL REINFORCEMENT PLACEMENT IN THE NUDURA FORM, SPACING OF HORIZONTAL REINFORCEMENT TO BE SPECIFIED AT 18" (457mm) O.C. AND VERTICAL REINFORCEMENT TO BE SPECIFIED AT MULTIPLES OF 8" (203mm) O.C. REFER TO NUDURA REINFORCEMENT PLACEMENT DETAILS.

This detail is for general informational purposes only. The project design professional determines, in its sole discretion, whether this detail or a functionally equivalent detail is best suited for the project with respect to any architecture, engineering, and design requirements, including any local building code requirements. If this document is not reviewed and the product is not approved for use by a licensed design professional, the customer agrees that the detail may contain substantive flaws requiring correction, and hereby releases Tremco CPG Inc. from any and all liability related to the design and installation of the product. This detail is subject to change without notice. Contact Tremco to ensure you have the most recent version.

Non-Combustible Construction - Slab on Grade

 <div>Nudura Technical Support: 866-468-6299 International: +1 705-726-9499</div>	Detail: Nudura 8" (203mm) Form Unit, Stem Wall at Slab on Grade, Exterior Finish as Specified, Insulated			File Name:	 Construction Products Group
	Drawn by: TVC	Checked by: KS	Scale: 1:8	B8C08	
	Revision #: 04	Revised by: KAB	Date: 3/13/2024		
	www.tremcocpa.com				



NOTES:

1) FOR OPTIMAL REINFORCEMENT PLACEMENT IN THE NUDURA FORM, SPACING OF HORIZONTAL REINFORCEMENT TO BE SPECIFIED AT 18" (457mm) O.C. AND VERTICAL REINFORCEMENT TO BE SPECIFIED AT MULTIPLES OF 8" (203mm) O.C. REFER TO NUDURA REINFORCEMENT PLACEMENT DETAILS.

This detail is for general informational purposes only. The project design professional determines, in its sole discretion, whether this detail or a functionally equivalent detail is best suited for the project with respect to any architecture, engineering, and design requirements, including any local building code requirements. If this document is not reviewed and the product is not approved for use by a licensed design professional, the customer agrees that the detail may contain substantive flaws requiring correction, and hereby releases Tremco CPG Inc. from any and all liability related to the design and installation of the product. This detail is subject to change without notice. Contact Tremco to ensure you have the most recent version.

Non-Combustible Construction - Slab on Grade

Detail: Nudura 8" (203mm) Form Unit, Stem Wall at Slab on Grade, Brick Veneer Finish, Insulated

File Name:

Drawn by: TVC

Checked by: KS

Scale: 1:8

B8C11

Revision #: 04

Revised by: KAB

Date: 3/13/2024

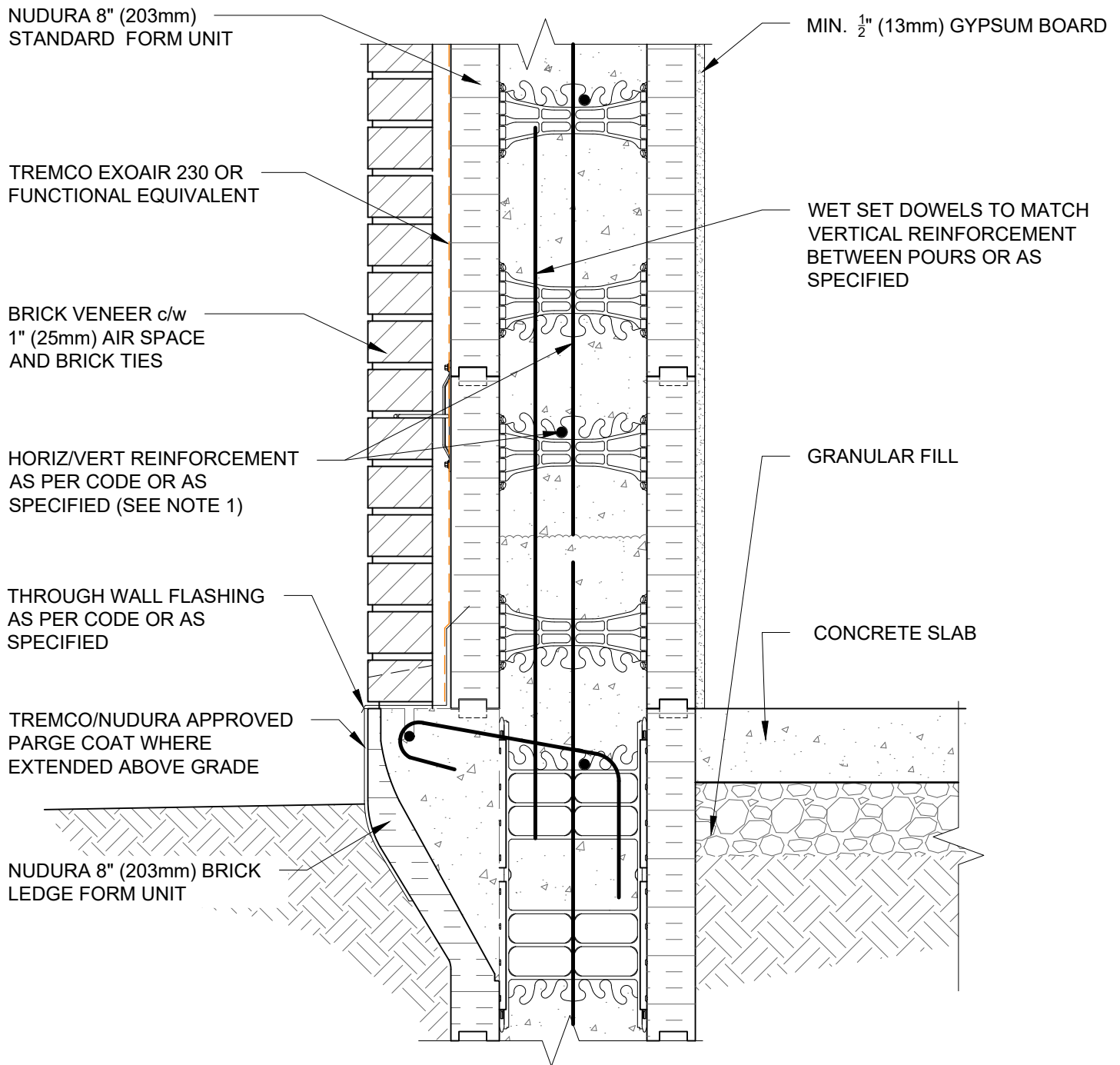
www.tremcocpg.com



Nudura Technical Support: 866-468-6299
International: +1 705-726-9499



Construction Products Group



NOTES:

1) FOR OPTIMAL REINFORCEMENT PLACEMENT IN THE NUDURA FORM, SPACING OF HORIZONTAL REINFORCEMENT TO BE SPECIFIED AT 18" (457mm) O.C. AND VERTICAL REINFORCEMENT TO BE SPECIFIED AT MULTIPLES OF 8" (203mm) O.C. REFER TO NUDURA REINFORCEMENT PLACEMENT DETAILS.

This detail is for general informational purposes only. The project design professional determines, in its sole discretion, whether this detail or a functionally equivalent detail is best suited for the project with respect to any architecture, engineering, and design requirements, including any local building code requirements. If this document is not reviewed and the product is not approved for use by a licensed design professional, the customer agrees that the detail may contain substantive flaws requiring correction, and hereby releases Tremco CPG Inc. from any and all liability related to the design and installation of the product. This detail is subject to change without notice. Contact Tremco to ensure you have the most recent version.

Non-Combustible Construction - Slab on Grade

Detail: Nudura 8" (203mm) Form Unit, Stem Wall at Slab on Grade,
Brick Veneer Finish, Non-Insulated

File Name:

Drawn by: TVC

Checked by: KS

Scale: 1:8

B8C12

Revision #: 04

Revised by: KAB

Date: 3/13/2024

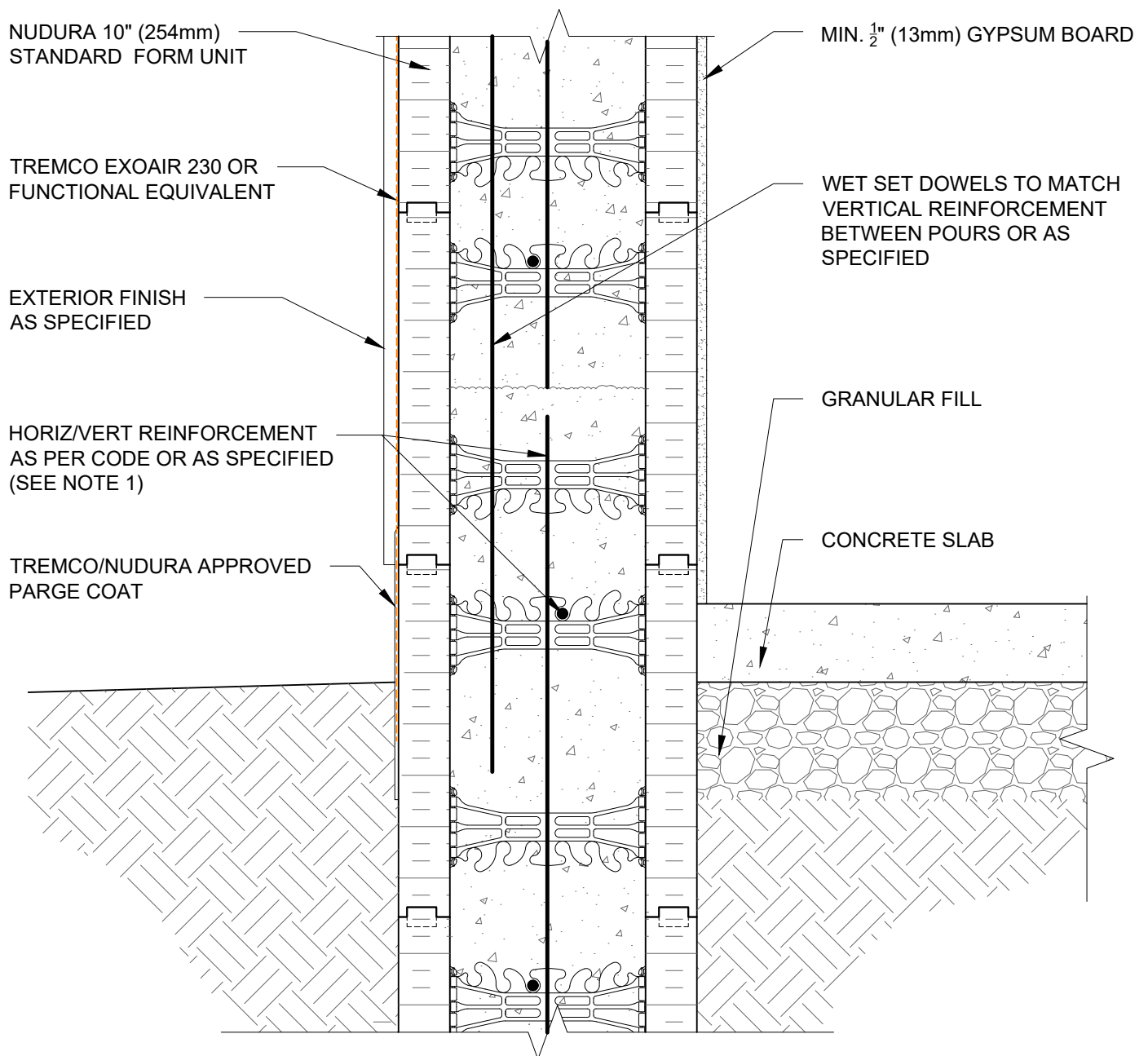
www.tremcocpg.com



Nudura Technical Support: 866-468-6299
International: +1 705-726-9499



Construction Products Group



NOTES:

1) FOR OPTIMAL REINFORCEMENT PLACEMENT IN THE NUDURA FORM, SPACING OF HORIZONTAL REINFORCEMENT TO BE SPECIFIED AT 18" (457mm) O.C. AND VERTICAL REINFORCEMENT TO BE SPECIFIED AT MULTIPLES OF 8" (203mm) O.C. REFER TO NUDURA REINFORCEMENT PLACEMENT DETAILS.

This detail is for general informational purposes only. The project design professional determines, in its sole discretion, whether this detail or a functionally equivalent detail is best suited for the project with respect to any architecture, engineering, and design requirements, including any local building code requirements. If this document is not reviewed and the product is not approved for use by a licensed design professional, the customer agrees that the detail may contain substantive flaws requiring correction, and hereby releases Tremco CPG Inc. from any and all liability related to the design and installation of the product. This detail is subject to change without notice. Contact Tremco to ensure you have the most recent version.

Non-Combustible Construction - Slab on Grade

Detail: Nudura 10" (254mm) Form Unit, Stem Wall at Slab on Grade,
Exterior Finish as Specified, Non-Insulated

Drawn by: JN

Checked by: KS

Scale: 1:8

Revision #: 04

Revised by: KAB

Date: 3/13/2024

File Name:

B10C02



Nudura Technical Support: 866-468-6299
International: +1 705-726-9499

www.tremcocpg.com



Construction Products Group

NUDURA 10" (254mm)
STANDARD FORM UNIT

MIN. $\frac{1}{2}$ " (13mm) GYPSUM BOARD

TREMCO EXOAIR 230 OR
FUNCTIONAL EQUIVALENT

WET SET DOWELS TO MATCH
VERTICAL REINFORCEMENT
BETWEEN POURS OR AS
SPECIFIED

EXTERIOR FINISH
AS SPECIFIED

GRANULAR FILL

HORIZ/VERT REINFORCEMENT
AS PER CODE OR AS SPECIFIED
(SEE NOTE 1)

INSULATED CONCRETE
SLAB

TREMCO/NUDURA APPROVED
PARGE COAT

NOTES:

1) FOR OPTIMAL REINFORCEMENT PLACEMENT IN THE NUDURA FORM, SPACING OF HORIZONTAL REINFORCEMENT TO BE SPECIFIED AT 18" (457mm) O.C. AND VERTICAL REINFORCEMENT TO BE SPECIFIED AT MULTIPLES OF 8" (203mm) O.C. REFER TO NUDURA REINFORCEMENT PLACEMENT DETAILS.

This detail is for general informational purposes only. The project design professional determines, in its sole discretion, whether this detail or a functionally equivalent detail is best suited for the project with respect to any architecture, engineering, and design requirements, including any local building code requirements. If this document is not reviewed and the product is not approved for use by a licensed design professional, the customer agrees that the detail may contain substantive flaws requiring correction, and hereby releases Tremco CPG Inc. from any and all liability related to the design and installation of the product. This detail is subject to change without notice. Contact Tremco to ensure you have the most recent version.

Non-Combustible Construction - Slab on Grade

Detail: Nudura 10" (254mm) Form Unit, Stem Wall at Slab on Grade,
Exterior Finish as Specified, Insulated

File Name:

Drawn by: JN

Checked by: KS

Scale: 1:8

B10C04

Revision #: 04

Revised by: KAB

Date: 3/13/2024



Nudura Technical Support: 866-468-6299
International: +1 705-726-9499

www.tremcocpg.com



Construction Products Group

NUDURA 10" (254mm)
STANDARD FORM UNIT

TREMCO EXOAIR 230 OR
FUNCTIONAL EQUIVALENT

BRICK VENEER c/w
1" (25mm) AIR SPACE
AND BRICK TIES

HORIZ/VERT REINFORCEMENT
AS PER CODE OR AS
SPECIFIED (SEE NOTE 1)

THROUGH WALL FLASHING
AS PER CODE OR AS
SPECIFIED

TREMCO/NUDURA APPROVED
PARGE COAT WHERE
EXTENDED ABOVE GRADE

NUDURA 10" (254mm) BRICK
LEDGE FORM UNIT

MIN. $\frac{1}{2}$ " (13mm) GYPSUM BOARD

WET SET DOWELS TO MATCH
VERTICAL REINFORCEMENT
BETWEEN POURS OR AS
SPECIFIED

GRANULAR FILL

INSULATED CONCRETE
SLAB

NOTES:

1) FOR OPTIMAL REINFORCEMENT PLACEMENT IN THE NUDURA FORM,
SPACING OF HORIZONTAL REINFORCEMENT TO BE SPECIFIED AT 18"
(457mm) O.C. AND VERTICAL REINFORCEMENT TO BE SPECIFIED AT
MULTIPLES OF 8" (203mm) O.C. REFER TO NUDURA REINFORCEMENT
PLACEMENT DETAILS.

This detail is for general informational purposes only. The project design professional determines, in its sole discretion, whether this detail or a functionally equivalent detail is best suited for the project with respect to any architecture, engineering, and design requirements, including any local building code requirements. If this document is not reviewed and the product is not approved for use by a licensed design professional, the customer agrees that the detail may contain substantive flaws requiring correction, and hereby releases Tremco CPG Inc. from any and all liability related to the design and installation of the product. This detail is subject to change without notice. Contact Tremco to ensure you have the most recent version.

Non-Combustible Construction - Slab on Grade



Nudura Technical Support: 866-468-6299
International: +1 705-726-9499

Detail: Nudura 10" (254mm) Form Unit, Stem Wall at Slab on Grade,
Brick Veneer Finish, Insulated

Drawn by: TVC

Checked by: KS

Scale: 1:8

Revision #: 04

Revised by: KAB

Date: 3/13/2024

www.tremcocpg.com

File Name:

B10C07



Construction Products Group

NUDURA 10" (254mm)
STANDARD FORM UNIT

MIN. 1/2" (13mm) GYPSUM BOARD

TREMCO EXOAIR 230 OR
FUNCTIONAL EQUIVALENT

WET SET DOWELS TO MATCH
VERTICAL REINFORCEMENT
BETWEEN POURS OR AS
SPECIFIED

BRICK VENEER c/w
1" (25mm) AIR SPACE
AND BRICK TIES

HORIZ/VERT REINFORCEMENT
AS PER CODE OR AS
SPECIFIED (SEE NOTE 1)

GRANULAR FILL

THROUGH WALL FLASHING
AS PER CODE OR AS
SPECIFIED

CONCRETE SLAB

TREMCO/NUDURA APPROVED
PARGE COAT WHERE
EXTENDED ABOVE GRADE

NUDURA 10" (254mm) BRICK
LEDGE FORM UNIT

NOTES:

1) FOR OPTIMAL REINFORCEMENT PLACEMENT IN THE NUDURA FORM,
SPACING OF HORIZONTAL REINFORCEMENT TO BE SPECIFIED AT 18"
(457mm) O.C. AND VERTICAL REINFORCEMENT TO BE SPECIFIED AT
MULTIPLES OF 8" (203mm) O.C. REFER TO NUDURA REINFORCEMENT
PLACEMENT DETAILS.

This detail is for general informational purposes only. The project design professional determines, in its sole discretion, whether this detail or a functionally equivalent detail is best suited for the project with respect to any architecture, engineering, and design requirements, including any local building code requirements. If this document is not reviewed and the product is not approved for use by a licensed design professional, the customer agrees that the detail may contain substantive flaws requiring correction, and hereby releases Tremco CPG Inc. from any and all liability related to the design and installation of the product. This detail is subject to change without notice. Contact Tremco to ensure you have the most recent version.

Non-Combustible Construction - Slab on Grade



Nudura Technical Support: 866-468-6299
International: +1 705-726-9499

Detail: Nudura 10" (254mm) Form Unit, Stem Wall at Slab on Grade,
Brick Veneer Finish, Non-Insulated

Drawn by: TVC

Checked by: KS

Scale: 1:8

Revision #: 04

Revised by: KAB

Date: 3/13/2024

www.tremcocpg.com

File Name:

B10C08



Construction Products Group

NUDURA 12" (305mm)
STANDARD FORM UNIT

TREMCO EXOAIR 230 OR
FUNCTIONAL EQUIVALENT

EXTERIOR FINISH
AS SPECIFIED

HORIZ/VERT REINFORCEMENT
AS PER CODE OR AS SPECIFIED
(SEE NOTE 1)

TREMCO/NUDURA APPROVED
PARGE COAT

MIN. $\frac{1}{2}$ " (13mm) GYPSUM BOARD

WET SET DOWELS TO MATCH
VERTICAL REINFORCEMENT
BETWEEN POURS OR AS
SPECIFIED

GRANULAR FILL

CONCRETE SLAB

NOTES:

1) FOR OPTIMAL REINFORCEMENT PLACEMENT IN THE NUDURA FORM, SPACING OF HORIZONTAL REINFORCEMENT TO BE SPECIFIED AT 18" (457mm) O.C. AND VERTICAL REINFORCEMENT TO BE SPECIFIED AT MULTIPLES OF 8" (203mm) O.C. REFER TO NUDURA REINFORCEMENT PLACEMENT DETAILS.

This detail is for general informational purposes only. The project design professional determines, in its sole discretion, whether this detail or a functionally equivalent detail is best suited for the project with respect to any architecture, engineering, and design requirements, including any local building code requirements. If this document is not reviewed and the product is not approved for use by a licensed design professional, the customer agrees that the detail may contain substantive flaws requiring correction, and hereby releases Tremco CPG Inc. from any and all liability related to the design and installation of the product. This detail is subject to change without notice. Contact Tremco to ensure you have the most recent version.

Non-Combustible Construction - Slab on Grade

Detail: Nudura 12" (305mm) Form Unit, Stem Wall at Slab on Grade,
Exterior Finish as Specified, Non-Insulated

Drawn by: TVC

Checked by: KS

Scale: 1:8

Revision #: 04

Revised by: KAB

Date: 3/13/2024

File Name:

B12C01



Nudura Technical Support: 866-468-6299
International: +1 705-726-9499

www.tremcocpg.com



Construction Products Group

NUDURA 12" (305mm)
STANDARD FORM UNIT

TREMCO EXOAIR 230 OR
FUNCTIONAL EQUIVALENT

EXTERIOR FINISH
AS SPECIFIED

HORIZ/VERT REINFORCEMENT
AS PER CODE OR AS SPECIFIED
(SEE NOTE 1)

TREMCO/NUDURA APPROVED
PARGE COAT

MIN. $\frac{1}{2}$ " (13mm) GYPSUM BOARD

WET SET DOWELS TO MATCH
VERTICAL REINFORCEMENT
BETWEEN POURS OR AS
SPECIFIED

GRANULAR FILL

INSULATED CONCRETE
SLAB

NOTES:

1) FOR OPTIMAL REINFORCEMENT PLACEMENT IN THE NUDURA FORM, SPACING OF HORIZONTAL REINFORCEMENT TO BE SPECIFIED AT 18" (457mm) O.C. AND VERTICAL REINFORCEMENT TO BE SPECIFIED AT MULTIPLES OF 8" (203mm) O.C. REFER TO NUDURA REINFORCEMENT PLACEMENT DETAILS.

This detail is for general informational purposes only. The project design professional determines, in its sole discretion, whether this detail or a functionally equivalent detail is best suited for the project with respect to any architecture, engineering, and design requirements, including any local building code requirements. If this document is not reviewed and the product is not approved for use by a licensed design professional, the customer agrees that the detail may contain substantive flaws requiring correction, and hereby releases Tremco CPG Inc. from any and all liability related to the design and installation of the product. This detail is subject to change without notice. Contact Tremco to ensure you have the most recent version.

Non-Combustible Construction - Slab on Grade



Nudura Technical Support: 866-468-6299
International: +1 705-726-9499

Detail: Nudura 12" (305mm) Form Unit, Stem Wall at Slab on Grade,
Exterior Finish as Specified, Insulated

Drawn by: TVC

Checked by: KS

Scale: 1:8

Revision #: 04

Revised by: KAB

Date: 3/13/2024

www.tremcocpg.com

File Name:

B12C03



Construction Products Group

NUDURA 12" (305mm)
STANDARD FORM UNIT

TREMCO EXOAIR 230 OR
FUNCTIONAL EQUIVALENT

BRICK VENEER c/w
1" (25mm) AIR SPACE
AND BRICK TIES

HORIZ/VERT REINFORCEMENT
AS PER CODE OR AS
SPECIFIED (SEE NOTE 1)

THROUGH WALL FLASHING
AS PER CODE OR AS
SPECIFIED

TREMCO/NUDURA APPROVED
PARGE COAT WHERE
EXTENDED ABOVE GRADE

NUDURA 12" (305mm) BRICK
LEDGE FORM UNIT

MIN. $\frac{1}{2}$ " (13mm) GYPSUM BOARD

WET SET DOWELS TO MATCH
VERTICAL REINFORCEMENT
BETWEEN POURS OR AS
SPECIFIED

GRANULAR FILL

INSULATED CONCRETE
SLAB

NOTES:

1) FOR OPTIMAL REINFORCEMENT PLACEMENT IN THE NUDURA FORM,
SPACING OF HORIZONTAL REINFORCEMENT TO BE SPECIFIED AT 18"
(457mm) O.C. AND VERTICAL REINFORCEMENT TO BE SPECIFIED AT
MULTIPLES OF 8" (203mm) O.C. REFER TO NUDURA REINFORCEMENT
PLACEMENT DETAILS.

This detail is for general informational purposes only. The project design professional determines, in its sole discretion, whether this detail or a functionally equivalent detail is best suited for the project with respect to any architecture, engineering, and design requirements, including any local building code requirements. If this document is not reviewed and the product is not approved for use by a licensed design professional, the customer agrees that the detail may contain substantive flaws requiring correction, and hereby releases Tremco CPG Inc. from any and all liability related to the design and installation of the product. This detail is subject to change without notice. Contact Tremco to ensure you have the most recent version.

Non-Combustible Construction - Slab on Grade



Nudura Technical Support: 866-468-6299
International: +1 705-726-9499

Detail: Nudura 12" (305mm) Form Unit, Stem Wall at Slab on Grade,
Brick Veneer Finish, Insulated

Drawn by: TVC

Checked by: KS

Scale: 1:8

Revision #: 04

Revised by: KAB

Date: 3/13/2024

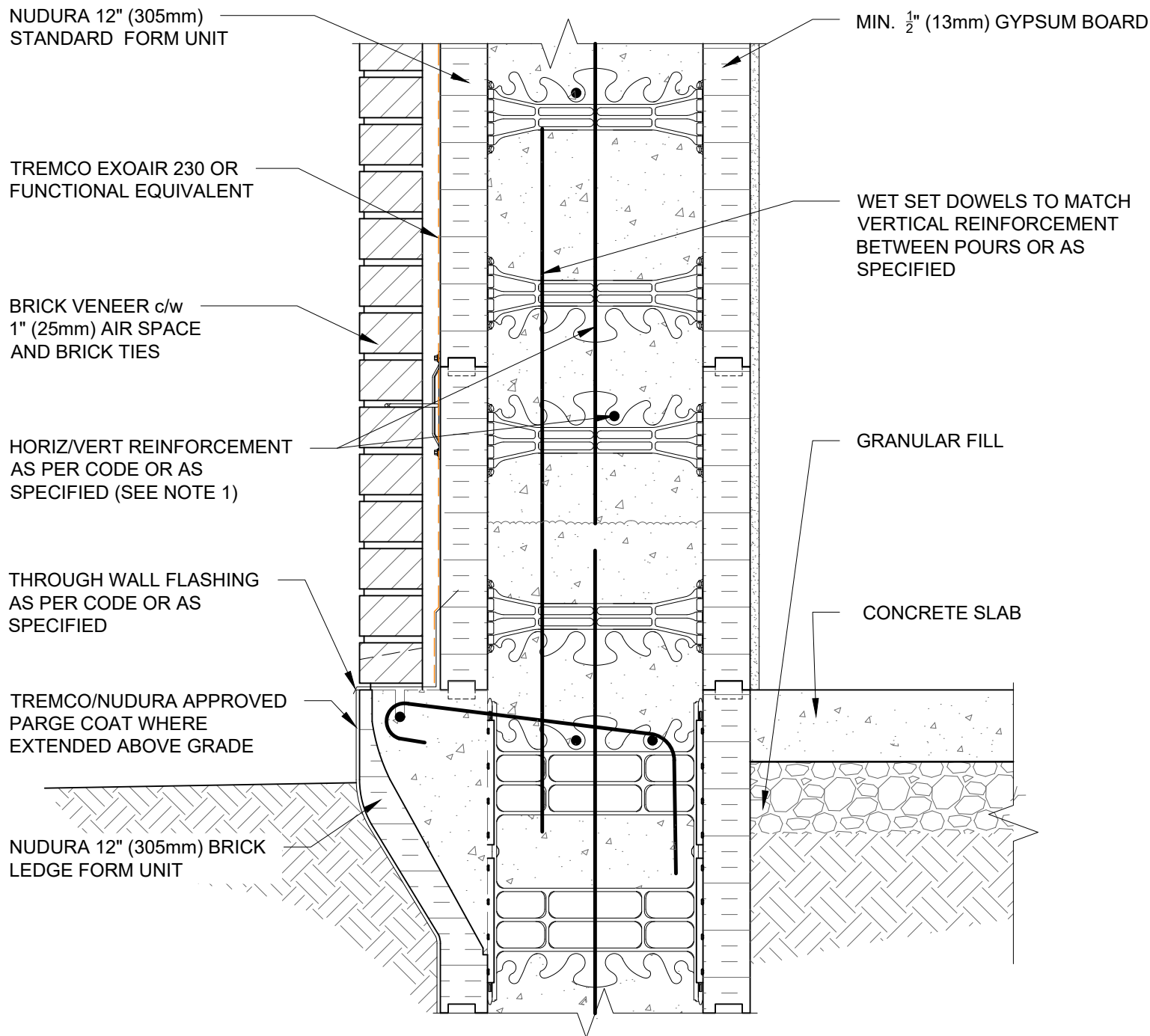
File Name:

B12C06



Construction Products Group

www.tremcocpg.com



NOTES:

1) FOR OPTIMAL REINFORCEMENT PLACEMENT IN THE NUDURA FORM, SPACING OF HORIZONTAL REINFORCEMENT TO BE SPECIFIED AT 18" (457mm) O.C. AND VERTICAL REINFORCEMENT TO BE SPECIFIED AT MULTIPLES OF 8" (203mm) O.C. REFER TO NUDURA REINFORCEMENT PLACEMENT DETAILS.

This detail is for general informational purposes only. The project design professional determines, in its sole discretion, whether this detail or a functionally equivalent detail is best suited for the project with respect to any architecture, engineering, and design requirements, including any local building code requirements. If this document is not reviewed and the product is not approved for use by a licensed design professional, the customer agrees that the detail may contain substantive flaws requiring correction, and hereby releases Tremco CPG Inc. from any and all liability related to the design and installation of the product. This detail is subject to change without notice. Contact Tremco to ensure you have the most recent version.

Non-Combustible Construction - Slab on Grade

Detail: Nudura 12" (305mm) Form Unit, Stem Wall at Slab on Grade, Brick Veneer Finish, Non-Insulated

File Name:

Drawn by: TVC

Checked by: KS

Scale: 1:8

B12C07

Revision #: 04

Revised by: KAB

Date: 3/13/2024

www.tremcocpg.com



Nudura Technical Support: 866-468-6299
International: +1 705-726-9499



Construction Products Group