

NOTES:

1) FOR OPTIMAL REINFORCEMENT PLACEMENT IN THE NUDURA FORM, SPACING OF HORIZONTAL REINFORCEMENT TO BE SPECIFIED AT 18" (457mm) O.C. AND VERTICAL REINFORCEMENT TO BE SPECIFIED AT MULTIPLES OF 8" (203mm) O.C. REFER TO NUDURA REINFORCEMENT PLACEMENT DETAILS.

This detail is for general informational purposes only. The project design professional determines, in its sole discretion, whether this detail or a functionally equivalent detail is best suited for the project with respect to any architecture, engineering, and design requirements, including any local building code requirements. If this document is not reviewed and the product is not approved for use by a licensed design professional, the customer agrees that the detail may contain substantive flaws requiring correction, and hereby releases Tremco CPG Inc. from any and all liability related to the design and installation of the product. This detail is subject to change without notice. Contact Tremco to ensure you have the most recent version.

Non-Combustible Construction - Demising Wall Roof Connections



Nudura Technical Support: 866-468-6299
International: +1 705-726-9499

Detail: Nudura 6" (152mm) Form Unit, Hollow Core Precast Roof, Bearing Demising Wall

Drawn by: KS

Checked by: KS

Scale: 1:8

Revision #: 01

Revised by: KAB

Date: 3/13/2024

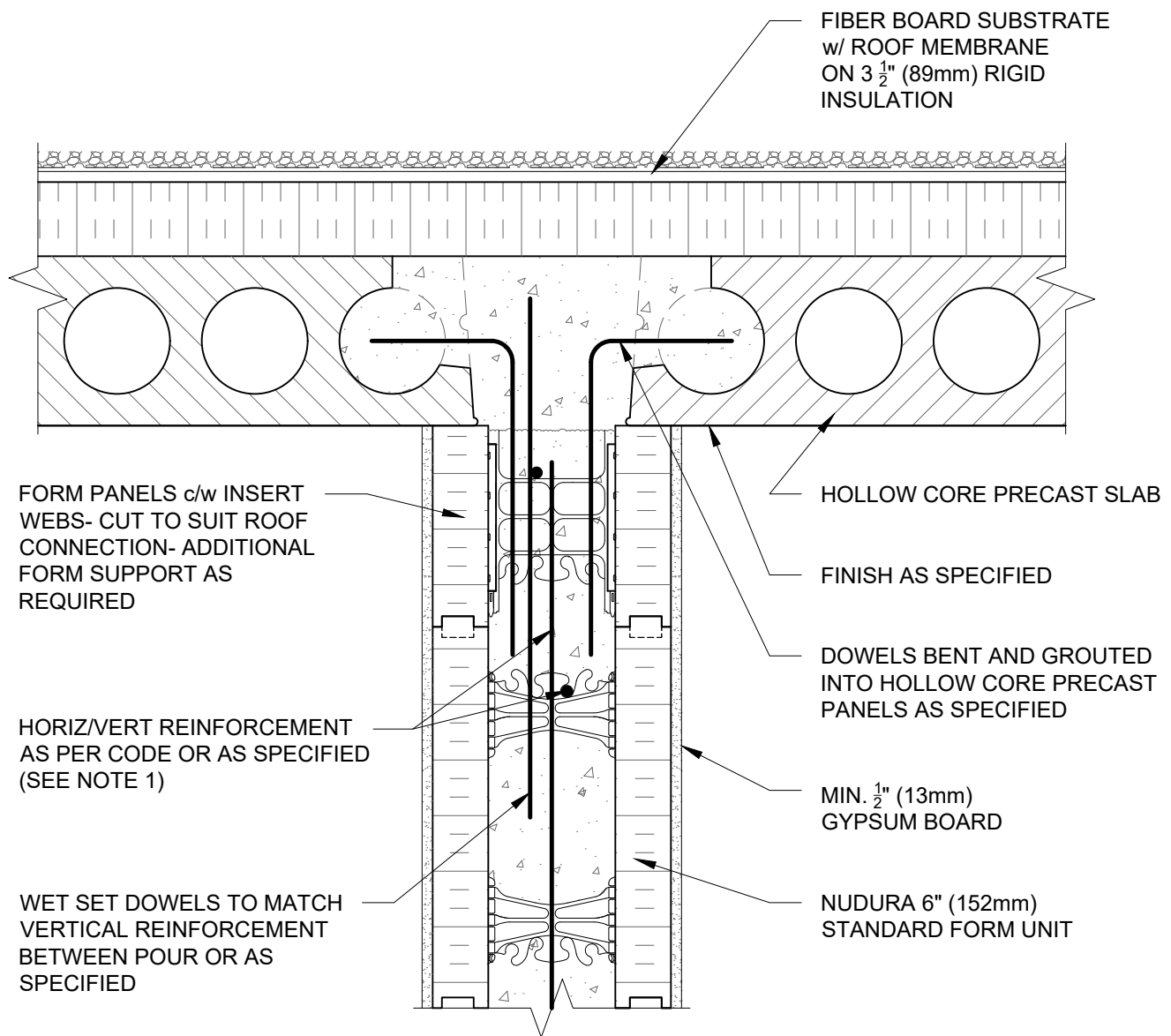
File Name:

G6A03



Construction Products Group

www.tremcocpg.com



NOTES:

1) FOR OPTIMAL REINFORCEMENT PLACEMENT IN THE NUDURA FORM, SPACING OF HORIZONTAL REINFORCEMENT TO BE SPECIFIED AT 18" (457mm) O.C. AND VERTICAL REINFORCEMENT TO BE SPECIFIED AT MULTIPLES OF 8" (203mm) O.C. REFER TO NUDURA REINFORCEMENT PLACEMENT DETAILS.

This detail is for general informational purposes only. The project design professional determines, in its sole discretion, whether this detail or a functionally equivalent detail is best suited for the project with respect to any architecture, engineering, and design requirements, including any local building code requirements. If this document is not reviewed and the product is not approved for use by a licensed design professional, the customer agrees that the detail may contain substantive flaws requiring correction, and hereby releases Tremco CPG Inc. from any and all liability related to the design and installation of the product. This detail is subject to change without notice. Contact Tremco to ensure you have the most recent version.

Non-Combustible Construction - Demising Wall Roof Connections

Detail: Nudura 6" (152mm) Form Unit, Hollow Core Precast Roof, Non-Bearing Demising Wall

Drawn by: KS

Checked by: KS

Scale: 1:8

Revision #: 01

Revised by: KAB

Date: 3/13/2024

File Name:

G6A04

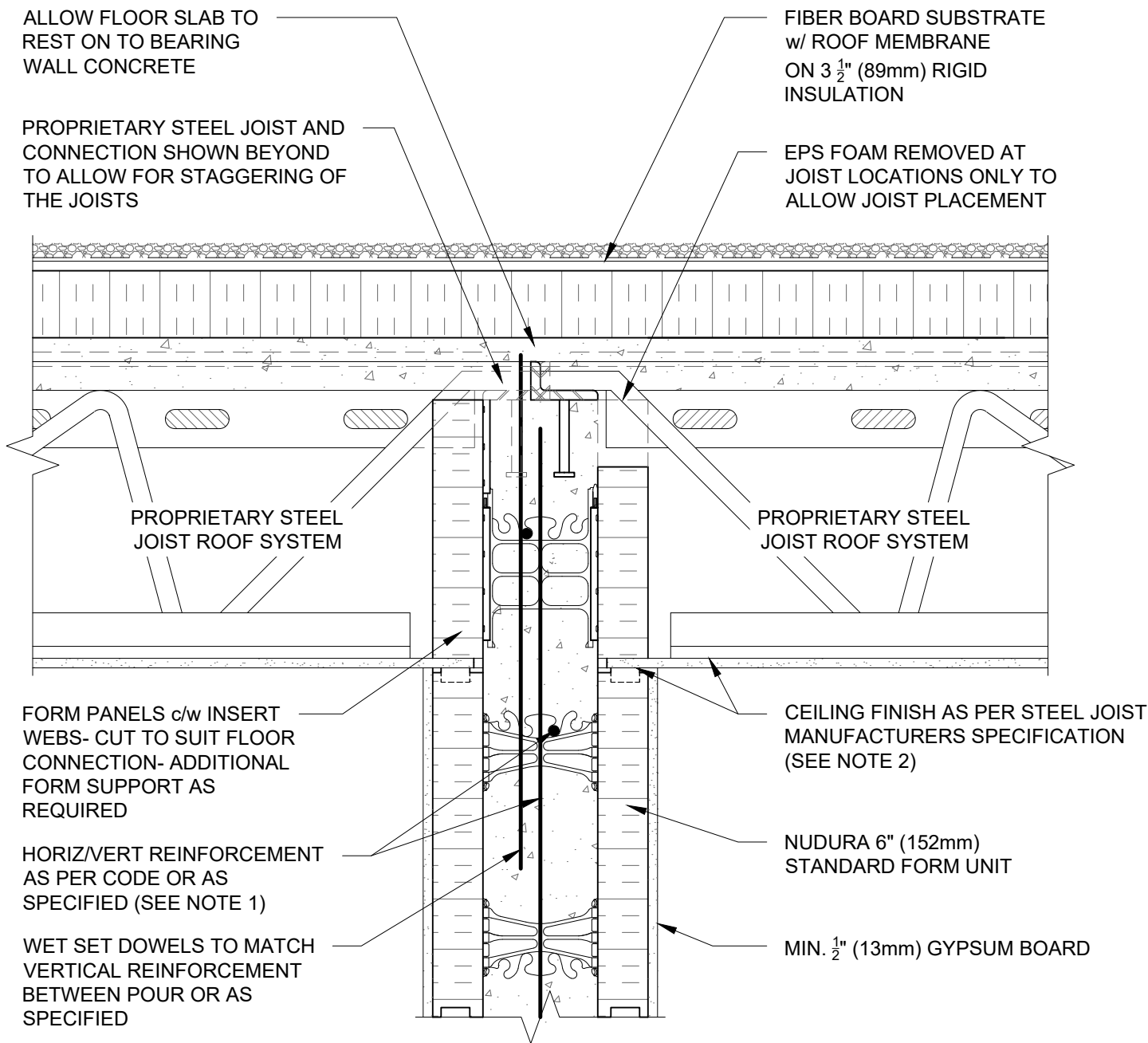


Nudura Technical Support: 866-468-6299
International: +1 705-726-9499

www.tremcocpg.com



Construction Products Group



NOTES:

1) FOR OPTIMAL REINFORCEMENT PLACEMENT IN THE NUDURA FORM, SPACING OF HORIZONTAL REINFORCEMENT TO BE SPECIFIED AT 18" (457mm) O.C. AND VERTICAL REINFORCEMENT TO BE SPECIFIED AT MULTIPLES OF 8" (203mm) O.C. REFER TO NUDURA REINFORCEMENT PLACEMENT DETAILS.

2) WHERE GYPSUM BOARD IS REQUIRED TO COMPLETE FIRE RATED ASSEMBLY, EPS FOAM KERF CUT TO ENABLE CEILING FINISH TO PROVIDE THERMAL BARRIER CONTACT TO CONCRETE.

This detail is for general informational purposes only. The project design professional determines, in its sole discretion, whether this detail or a functionally equivalent detail is best suited for the project with respect to any architecture, engineering, and design requirements, including any local building code requirements. If this document is not reviewed and the product is not approved for use by a licensed design professional, the customer agrees that the detail may contain substantive flaws requiring correction, and hereby releases Tremco CPG Inc. from any and all liability related to the design and installation of the product. This detail is subject to change without notice. Contact Tremco to ensure you have the most recent version.

Non-Combustible Construction - Demising Wall Roof Connections



Nudura Technical Support: 866-468-6299
International: +1 705-726-9499

Detail: Nudura 6" (152mm) Form Unit, Steel Joist Roof System, Bearing Demising Wall

Drawn by: KS

Checked by: KS

Scale: 1:8

Revision #: 01

Revised by: KAB

Date: 3/13/2024

File Name:

G6B03



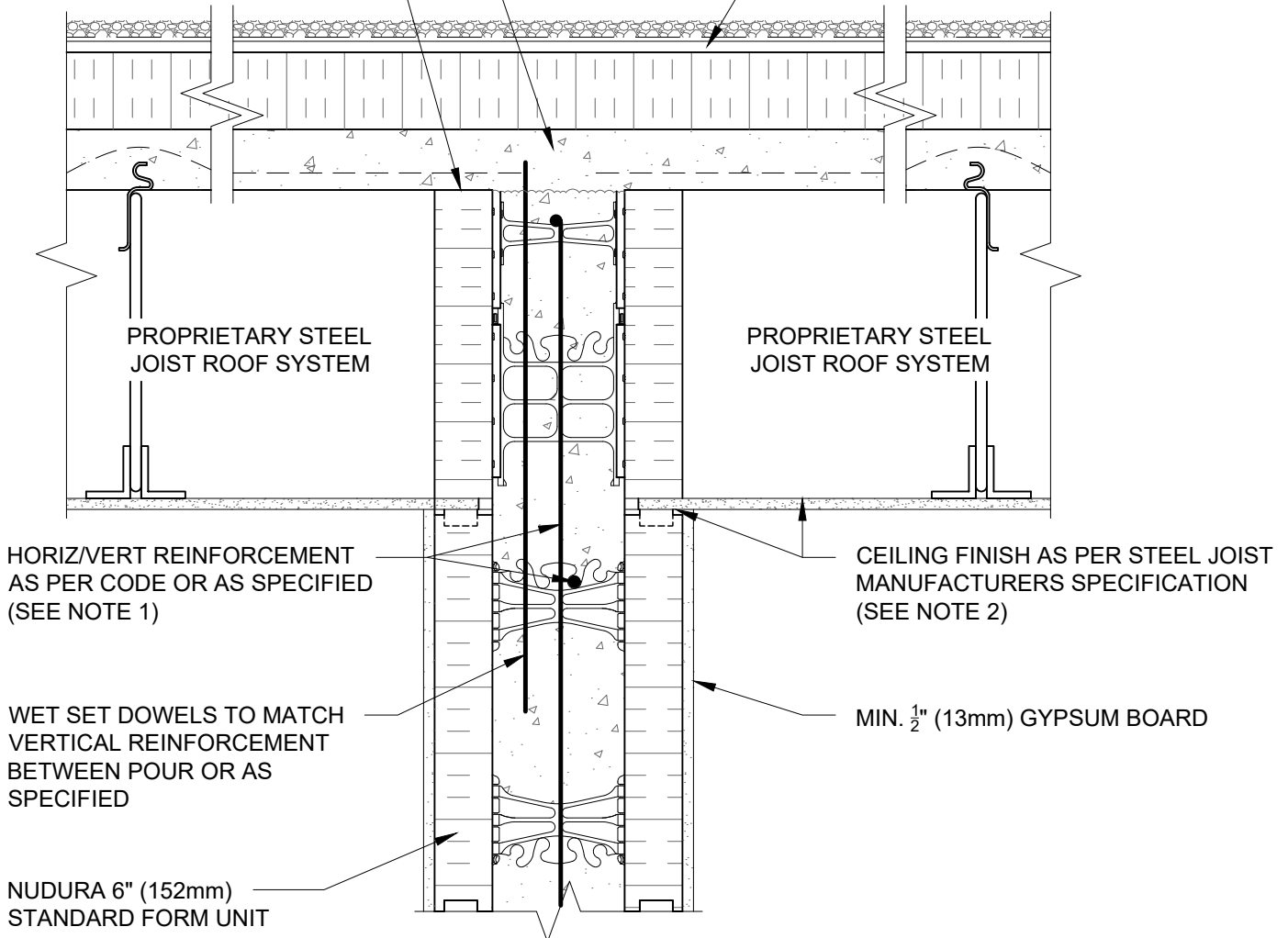
Construction Products Group

www.tremcocpg.com

ALLOW ROOF SLAB TO
REST ON TO BEARING
WALL CONCRETE

FORM PANELS c/w INSERT
WEBS- CUT TO SUIT ROOF
CONNECTION- ADDITIONAL
FORM SUPPORT AS
REQUIRED

FIBER BOARD SUBSTRATE
w/ ROOF MEMBRANE
ON 3 1/2" (89mm) RIGID
INSULATION



NOTES:

1) FOR OPTIMAL REINFORCEMENT PLACEMENT IN THE NUDURA FORM, SPACING OF HORIZONTAL REINFORCEMENT TO BE SPECIFIED AT 18" (457mm) O.C. AND VERTICAL REINFORCEMENT TO BE SPECIFIED AT MULTIPLES OF 8" (203mm) O.C. REFER TO NUDURA REINFORCEMENT PLACEMENT DETAILS.

2) WHERE GYPSUM BOARD IS REQUIRED TO COMPLETE FIRE RATED ASSEMBLY, EPS FOAM KERF CUT TO ENABLE CEILING FINISH TO PROVIDE THERMAL BARRIER CONTACT TO CONCRETE.

This detail is for general informational purposes only. The project design professional determines, in its sole discretion, whether this detail or a functionally equivalent detail is best suited for the project with respect to any architecture, engineering, and design requirements, including any local building code requirements. If this document is not reviewed and the product is not approved for use by a licensed design professional, the customer agrees that the detail may contain substantive flaws requiring correction, and hereby releases Tremco CPG Inc. from any and all liability related to the design and installation of the product. This detail is subject to change without notice. Contact Tremco to ensure you have the most recent version.

Non-Combustible Construction - Demising Wall Roof Connections



Nudura Technical Support: 866-468-6299
International: +1 705-726-9499

Detail: Nudura 6" (152mm) Form Unit, Steel Joist Roof System, Non-Bearing
Demising Wall

Drawn by: KS

Checked by: KS

Scale: 1:8

Revision #: 01

Revised by: KAB

Date: 3/13/2024

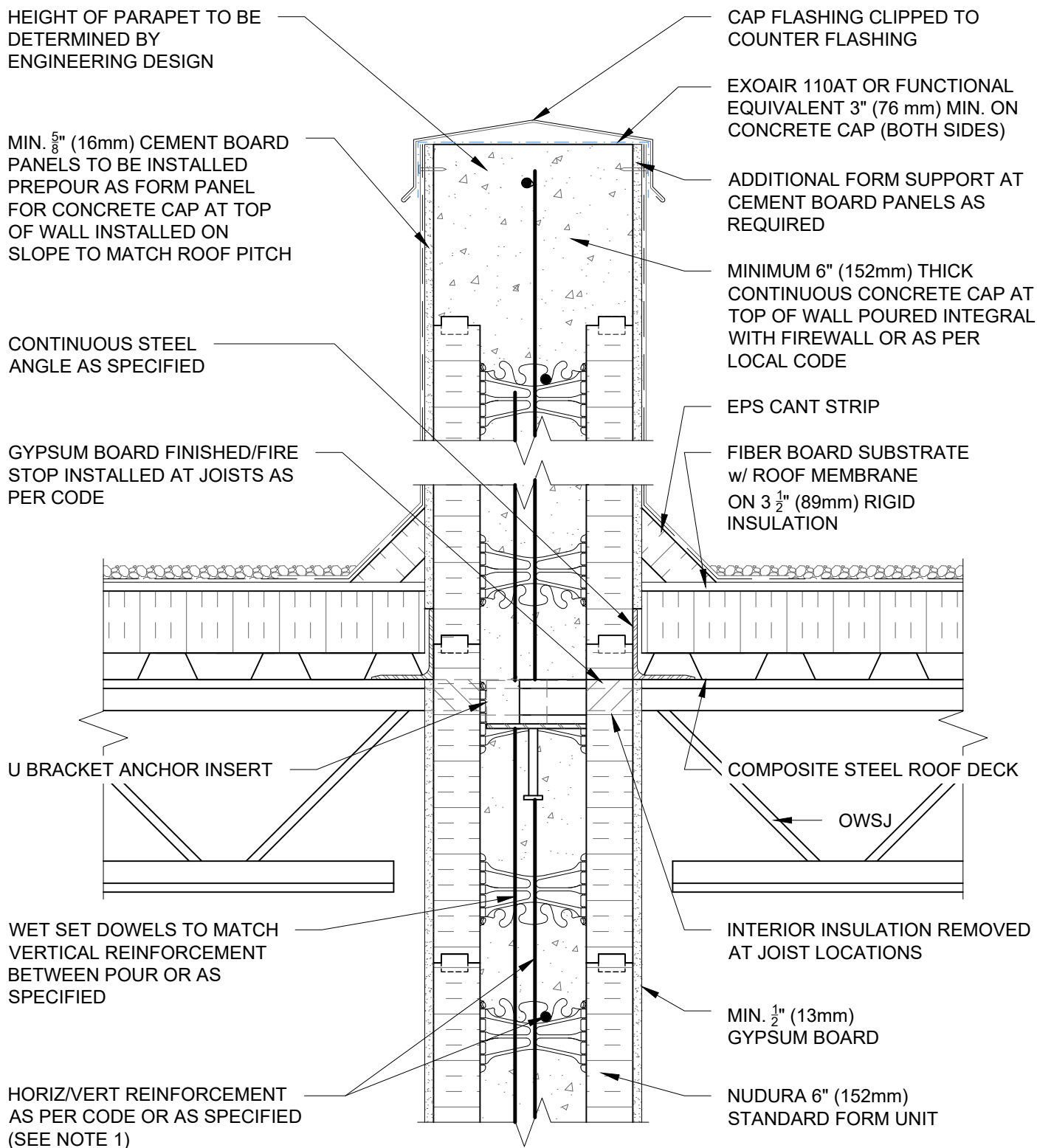
File Name:

G6B04



Construction Products Group

www.tremcocpg.com



NOTES:

1) FOR OPTIMAL REINFORCEMENT PLACEMENT IN THE NUDURA FORM, SPACING OF HORIZONTAL REINFORCEMENT TO BE SPECIFIED AT 18" (457mm) O.C. AND VERTICAL REINFORCEMENT TO BE SPECIFIED AT MULTIPLES OF 8" (203mm) O.C. REFER TO NUDURA REINFORCEMENT PLACEMENT DETAILS.

This detail is for general informational purposes only. The project design professional determines, in its sole discretion, whether this detail or a functionally equivalent detail is best suited for the project with respect to any architecture, engineering, and design requirements, including any local building code requirements. If this document is not reviewed and the product is not approved for use by a licensed design professional, the customer agrees that the detail may contain substantive flaws requiring correction, and hereby releases Tremco CPG Inc. from any and all liability related to the design and installation of the product. This detail is subject to change without notice. Contact Tremco to ensure you have the most recent version.

Non-Combustible Construction - Demising Wall Roof Connections



Nudura Technical Support: 866-468-6299
International: +1 705-726-9499

Detail: Nudura 6" (152mm) Form Unit, Steel Joist Roof, Bearing Demising Wall

Drawn by: KS

Checked by: KS

Scale: 1:8

Revision #: 01

Revised by: KAB

Date: 3/13/2024

www.tremcocpg.com

File Name:

G6C03



Construction Products Group

HEIGHT OF PARAPET TO BE DETERMINED BY ENGINEERING DESIGN

MIN. $\frac{5}{8}$ " (16mm) CEMENT BOARD PANELS TO BE INSTALLED PREPOUR AS FORM PANEL FOR CONCRETE CAP AT TOP OF WALL INSTALLED ON SLOPE TO MATCH ROOF PITCH

COMPOSITE STEEL DECK

COMPOSITE STEEL DECK WELDED TO SUPPORT ANCHORS AS SPECIFIED

HORIZ/VERT REINFORCEMENT AS PER CODE OR AS SPECIFIED (SEE NOTE 1)

WET SET DOWELS TO MATCH VERTICAL REINFORCEMENT BETWEEN POUR OR AS SPECIFIED

PROVIDE 4"x4" (100mmx100mm) FORM CUT OUT AT BRIDGING LOCATIONS

NUDURA 6" (152mm) STANDARD FORM UNIT

CAP FLASHING CLIPPED TO COUNTER FLASHING

EXOAIR 110AT OR FUNCTIONAL EQUIVALENT 3" (76 mm) MIN. ON CONCRETE CAP (BOTH SIDES)

ADDITIONAL FORM SUPPORT AT CEMENT BOARD PANELS AS REQUIRED

MIN. 6" (152mm) THICK CONTINUOUS CONCRETE CAP AT TOP OF WALL POURED INTEGRAL WITH FIREWALL OR AS PER LOCAL CODE

EPS CANT STRIP

FIBER BOARD SUBSTRATE w/ ROOF MEMBRANE ON 3 $\frac{1}{2}$ " (89mm) RIGID INSULATION

INTERIOR INSULATION TO BE DISCONTINUOUS AT FLOOR LINES

OWSJ

MIN. $\frac{1}{32}$ " (0.8mm) x 2 $\frac{1}{2}$ " (63.5mm) GALVANIZED STEEL CHANNEL CAP TO PROVIDE THERMAL BARRIER PROTECTION

CLIP ANGLE ANCHORED TO WALL AT JOIST BRIDGING LOCATIONS

MIN. $\frac{1}{2}$ " (13mm) GYPSUM BOARD

NOTES:

1) FOR OPTIMAL REINFORCEMENT PLACEMENT IN THE NUDURA FORM, SPACING OF HORIZONTAL REINFORCEMENT TO BE SPECIFIED AT 18" (457mm) O.C. AND VERTICAL REINFORCEMENT TO BE SPECIFIED AT MULTIPLES OF 8" (203mm) O.C. REFER TO NUDURA REINFORCEMENT PLACEMENT DETAILS.

This detail is for general informational purposes only. The project design professional determines, in its sole discretion, whether this detail or a functionally equivalent detail is best suited for the project with respect to any architecture, engineering, and design requirements, including any local building code requirements. If this document is not reviewed and the product is not approved for use by a licensed design professional, the customer agrees that the detail may contain substantive flaws requiring correction, and hereby releases Tremco CPG Inc. from any and all liability related to the design and installation of the product. This detail is subject to change without notice. Contact Tremco to ensure you have the most recent version.

Non-Combustible Construction - Demising Wall Roof Connections



Nudura Technical Support: 866-468-6299
International: +1 705-726-9499

Detail: Nudura 6" (152mm) Form Unit, Steel Joist Roof, Non-Bearing Demising Wall

Drawn by: KS

Checked by: KS

Scale: 1:8

Revision #: 01

Revised by: KAB

Date: 3/13/2024

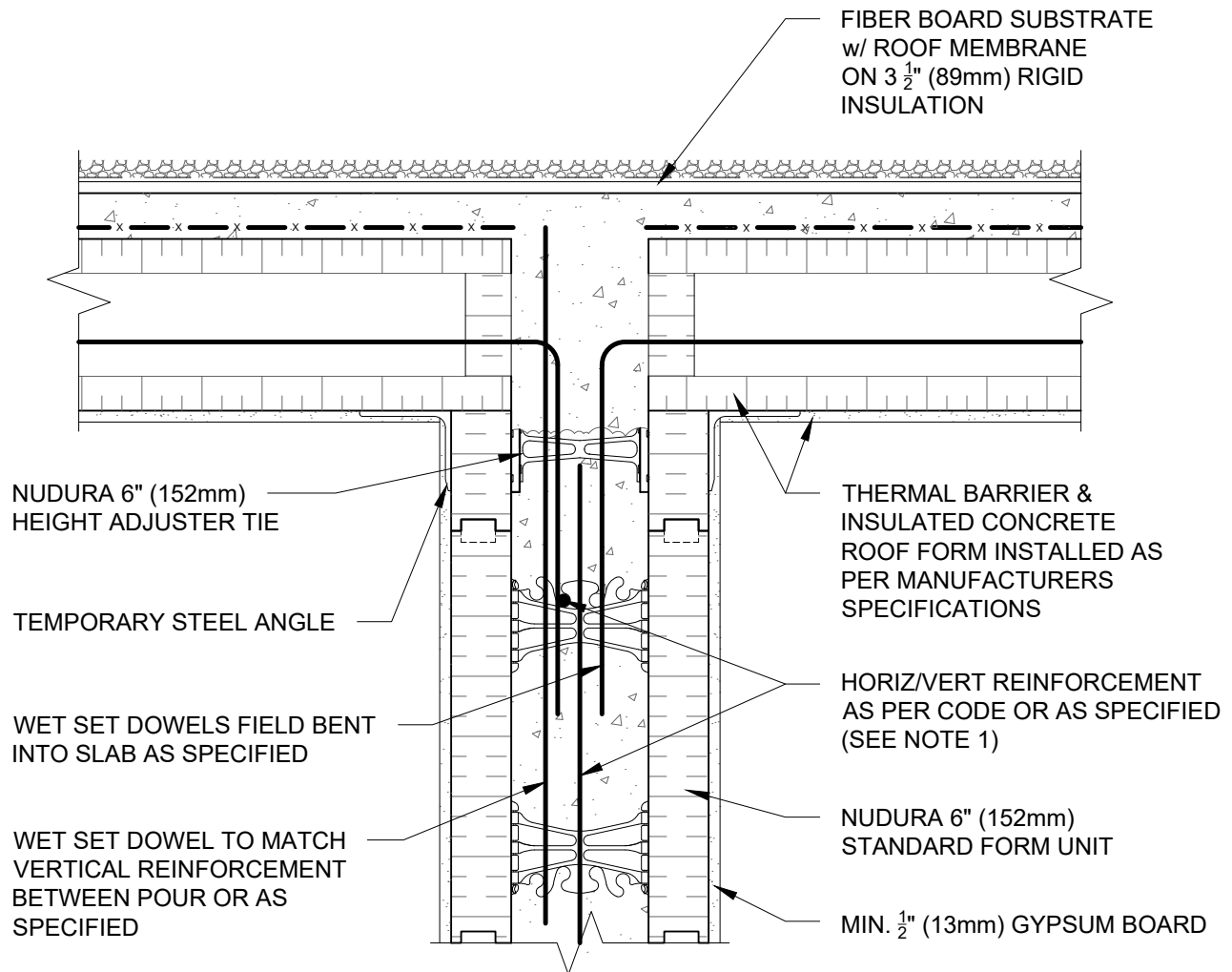
File Name:

G6C04



Construction Products Group

www.tremcocpg.com



NOTES:

1) FOR OPTIMAL REINFORCEMENT PLACEMENT IN THE NUDURA FORM, SPACING OF HORIZONTAL REINFORCEMENT TO BE SPECIFIED AT 18" (457mm) O.C. AND VERTICAL REINFORCEMENT TO BE SPECIFIED AT MULTIPLES OF 8" (203mm) O.C. REFER TO NUDURA REINFORCEMENT PLACEMENT DETAILS.

This detail is for general informational purposes only. The project design professional determines, in its sole discretion, whether this detail or a functionally equivalent detail is best suited for the project with respect to any architecture, engineering, and design requirements, including any local building code requirements. If this document is not reviewed and the product is not approved for use by a licensed design professional, the customer agrees that the detail may contain substantive flaws requiring correction, and hereby releases Tremco CPG Inc. from any and all liability related to the design and installation of the product. This detail is subject to change without notice. Contact Tremco to ensure you have the most recent version.

Non-Combustible Construction - Demising Wall Roof Connections



Nudura Technical Support: 866-468-6299
International: +1 705-726-9499

Detail: Nudura 6" (152mm) Form Unit, ICFS Connection, ICFS Resting on Form, Bearing Demising Wall

Drawn by: KS

Checked by: KS

Scale: 1:8

Revision #: 01

Revised by: KAB

Date: 3/13/2024

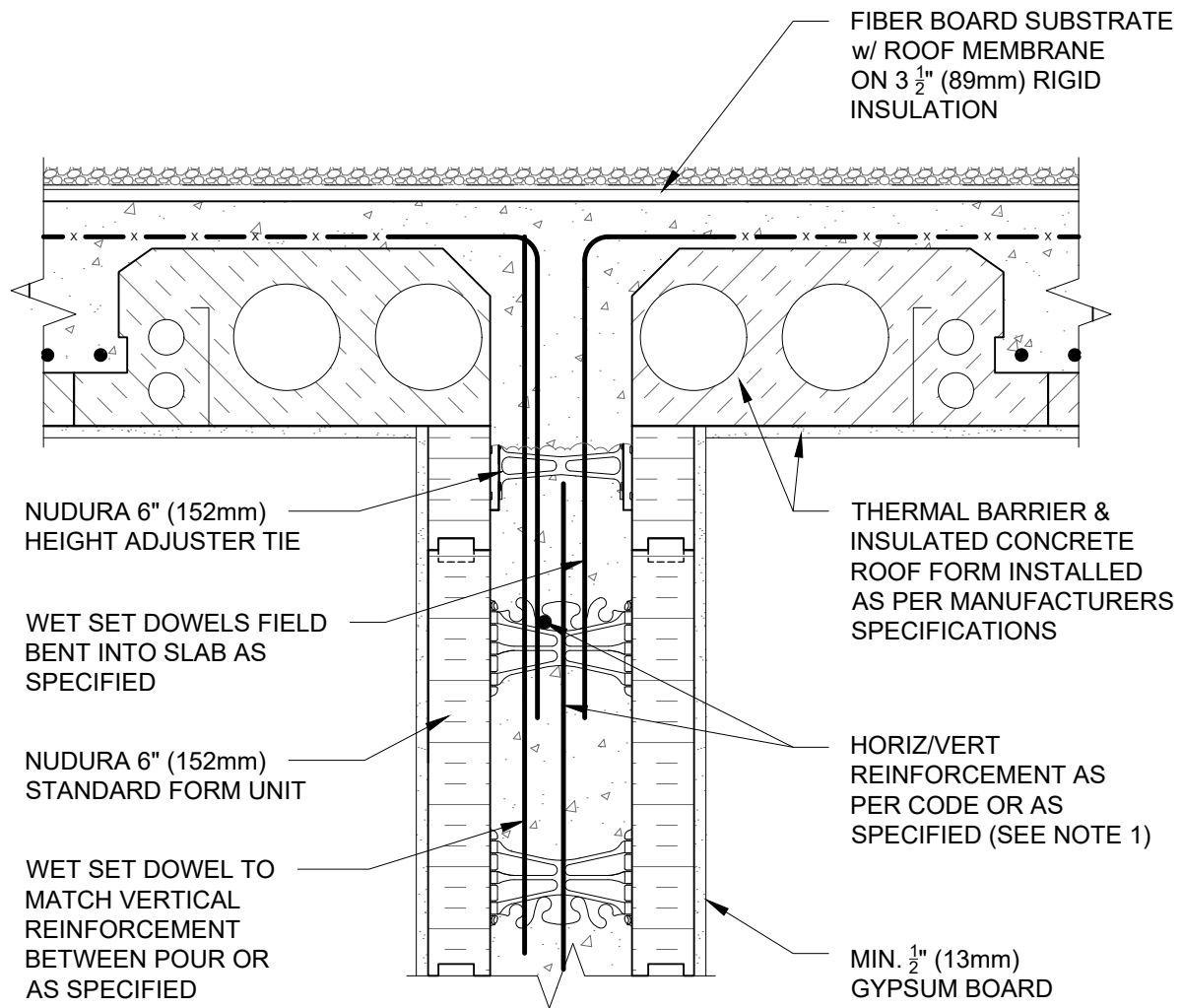
www.tremcocpg.com

File Name:

G6D03



Construction Products Group



NOTES:

1) FOR OPTIMAL REINFORCEMENT PLACEMENT IN THE NUDURA FORM, SPACING OF HORIZONTAL REINFORCEMENT TO BE SPECIFIED AT 18" (457mm) O.C. AND VERTICAL REINFORCEMENT TO BE SPECIFIED AT MULTIPLES OF 8" (203mm) O.C. REFER TO NUDURA REINFORCEMENT PLACEMENT DETAILS.

This detail is for general informational purposes only. The project design professional determines, in its sole discretion, whether this detail or a functionally equivalent detail is best suited for the project with respect to any architecture, engineering, and design requirements, including any local building code requirements. If this document is not reviewed and the product is not approved for use by a licensed design professional, the customer agrees that the detail may contain substantive flaws requiring correction, and hereby releases Tremco CPG Inc. from any and all liability related to the design and installation of the product. This detail is subject to change without notice. Contact Tremco to ensure you have the most recent version.

Non-Combustible Construction - Demising Wall Roof Connections

Detail: Nudura 6" (152mm) Form Unit, ICFS Connection, ICFS Resting on Form, Non-Bearing Demising Wall

Drawn by: KS

Checked by: KS

Scale: 1:8

Revision #: 01

Revised by: KAB

Date: 3/13/2024

File Name:

G6D04

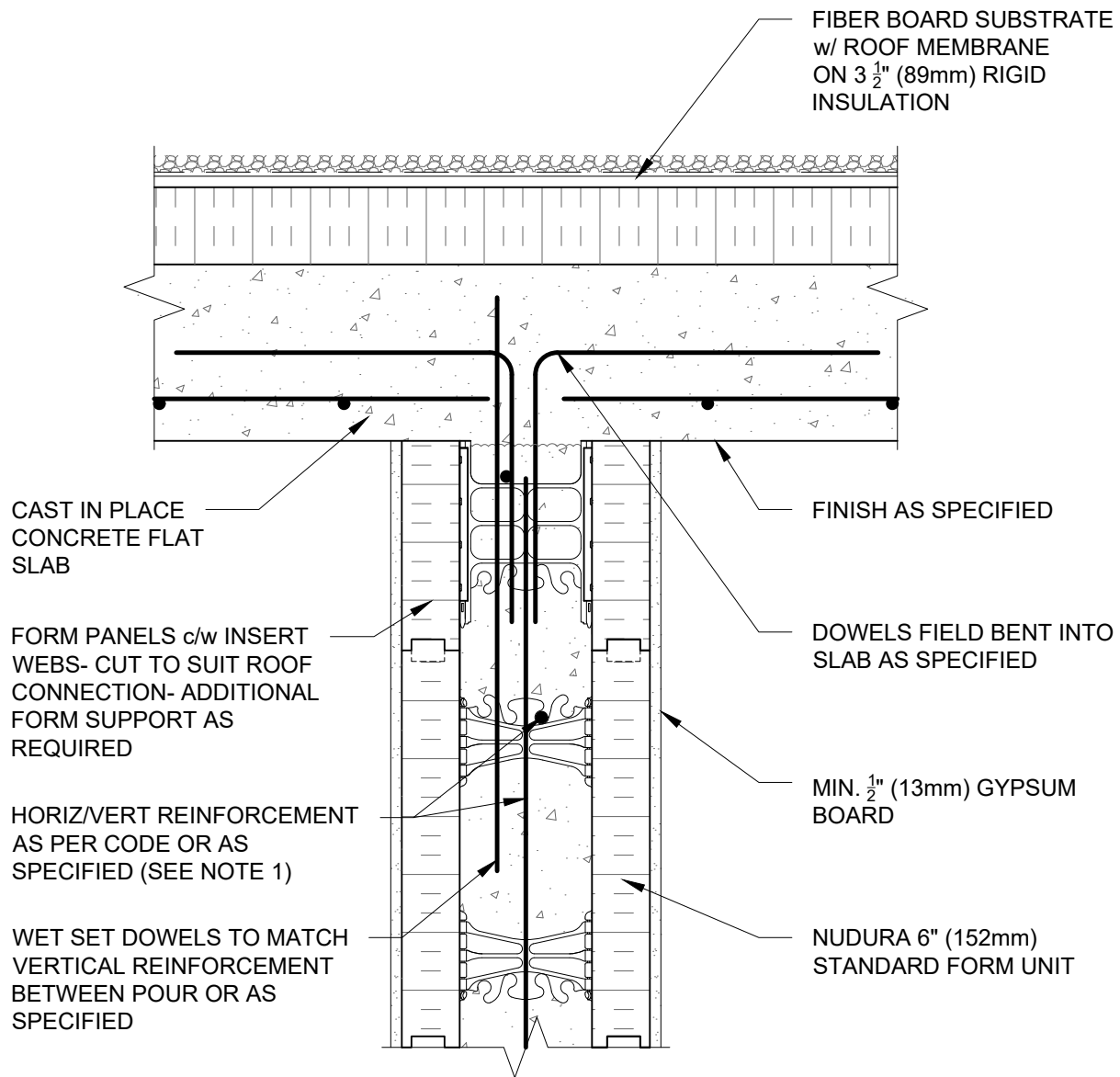


Nudura Technical Support: 866-468-6299
International: +1 705-726-9499

www.tremcocpg.com



Construction Products Group



NOTES:

1) FOR OPTIMAL REINFORCEMENT PLACEMENT IN THE NUDURA FORM, SPACING OF HORIZONTAL REINFORCEMENT TO BE SPECIFIED AT 18" (457mm) O.C. AND VERTICAL REINFORCEMENT TO BE SPECIFIED AT MULTIPLES OF 8" (203mm) O.C. REFER TO NUDURA REINFORCEMENT PLACEMENT DETAILS.

This detail is for general informational purposes only. The project design professional determines, in its sole discretion, whether this detail or a functionally equivalent detail is best suited for the project with respect to any architecture, engineering, and design requirements, including any local building code requirements. If this document is not reviewed and the product is not approved for use by a licensed design professional, the customer agrees that the detail may contain substantive flaws requiring correction, and hereby releases Tremco CPG Inc. from any and all liability related to the design and installation of the product. This detail is subject to change without notice. Contact Tremco to ensure you have the most recent version.

Non-Combustible Construction - Demising Wall Roof Connections



Nudura Technical Support: 866-468-6299
International: +1 705-726-9499

Detail: Nudura 6" (152mm) Form Unit, Concrete Flat Plate, Bearing Demising Roof

Drawn by: KS

Checked by: KS

Scale: 1:8

Revision #: 01

Revised by: KAB

Date: 3/13/2024

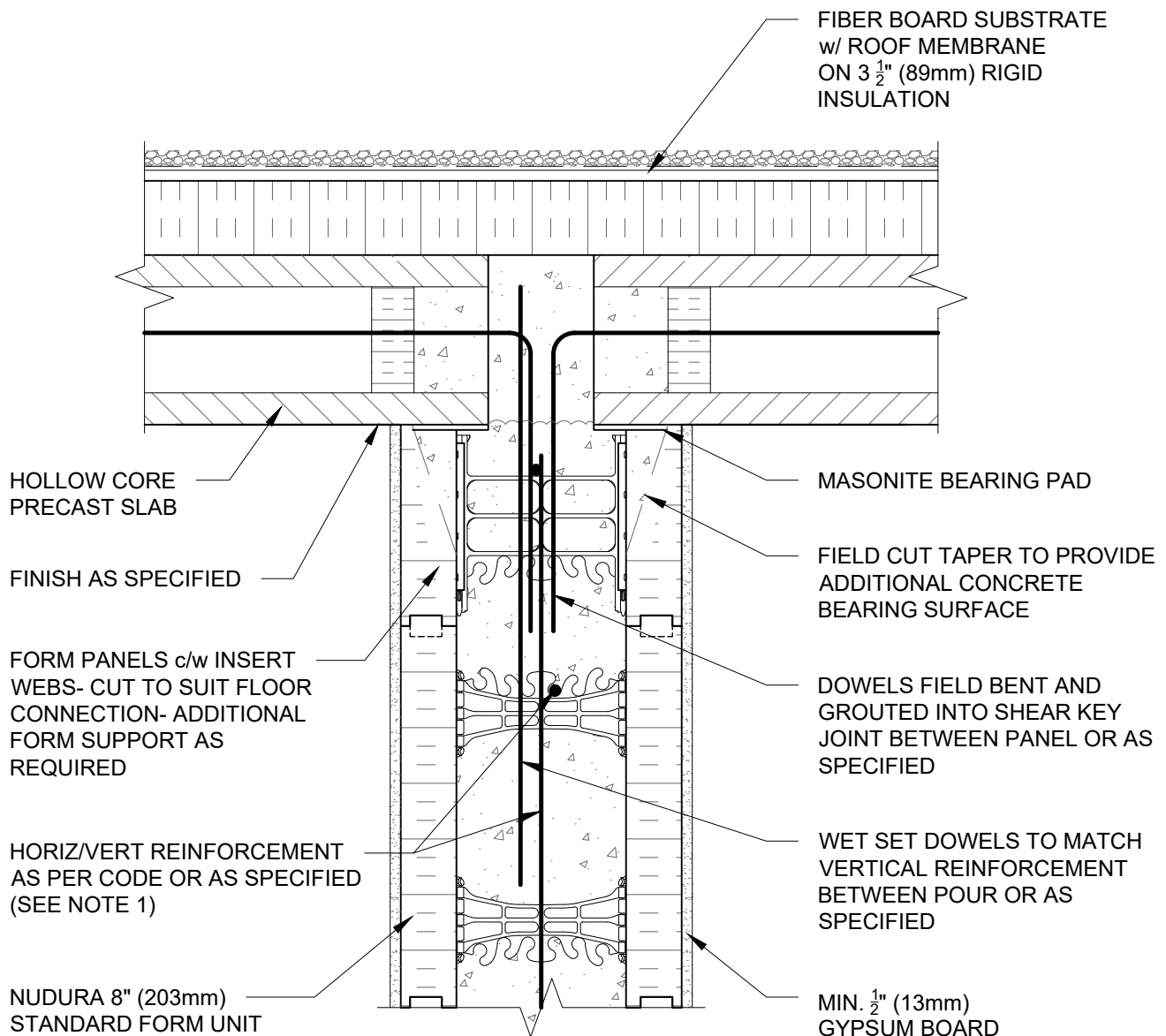
www.tremcocpg.com

File Name:

G6E02



Construction Products Group



NOTES:

1) FOR OPTIMAL REINFORCEMENT PLACEMENT IN THE NUDURA FORM, SPACING OF HORIZONTAL REINFORCEMENT TO BE SPECIFIED AT 18" (457mm) O.C. AND VERTICAL REINFORCEMENT TO BE SPECIFIED AT MULTIPLES OF 8" (203mm) O.C. REFER TO NUDURA REINFORCEMENT PLACEMENT DETAILS.

This detail is for general informational purposes only. The project design professional determines, in its sole discretion, whether this detail or a functionally equivalent detail is best suited for the project with respect to any architecture, engineering, and design requirements, including any local building code requirements. If this document is not reviewed and the product is not approved for use by a licensed design professional, the customer agrees that the detail may contain substantive flaws requiring correction, and hereby releases Tremco CPG Inc. from any and all liability related to the design and installation of the product. This detail is subject to change without notice. Contact Tremco to ensure you have the most recent version.

Non-Combustible Construction - Demising Wall Roof Connections



Nudura Technical Support: 866-468-6299
International: +1 705-726-9499

Detail: Nudura 8" (203mm) Form Unit, Hollow Core Precast Roof, Bearing Demising Wall

Drawn by: KS

Checked by: KS

Scale: 1:8

Revision #: 01

Revised by: KAB

Date: 3/13/2024

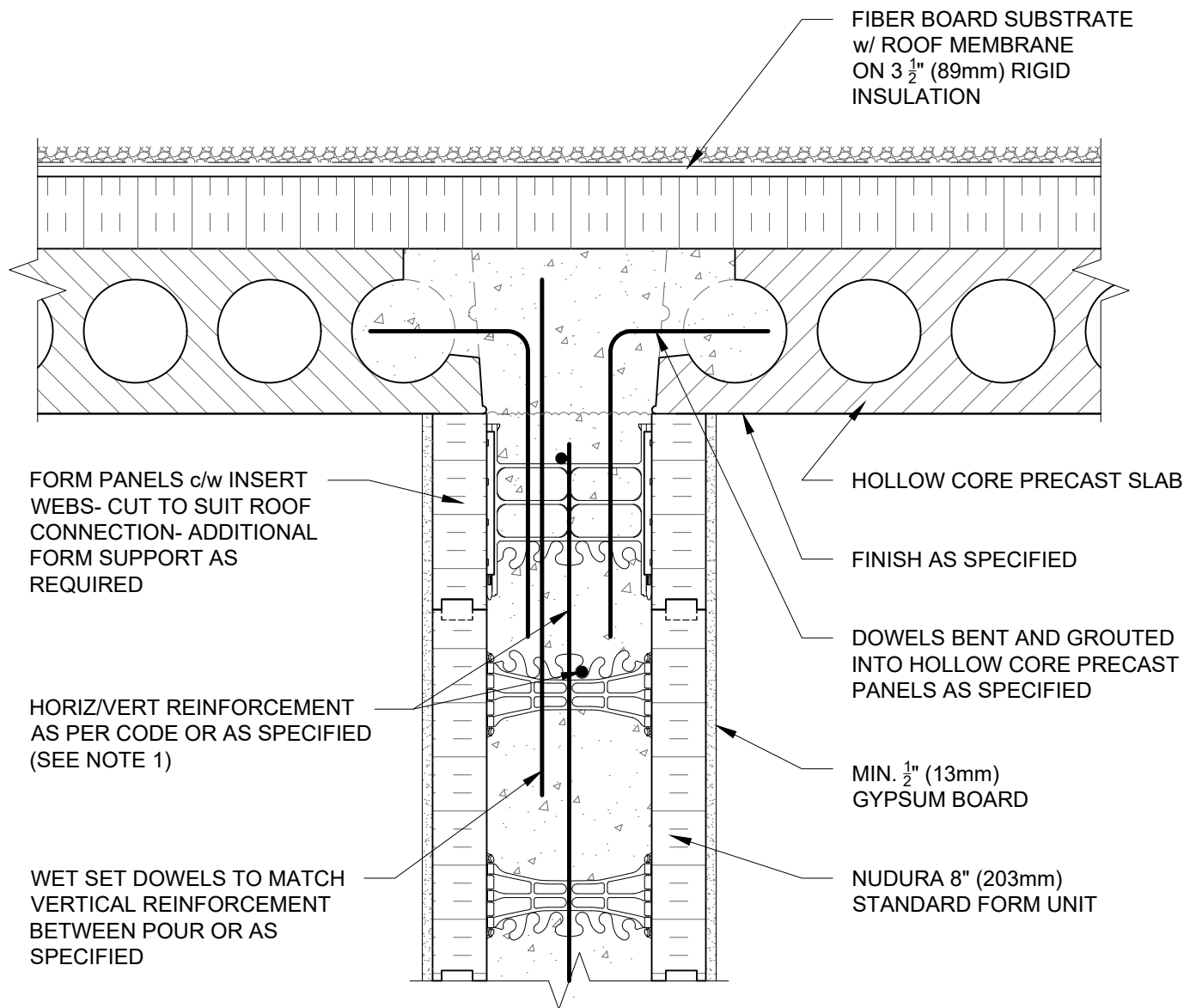
File Name:

G8A03



Construction Products Group

www.tremcocpg.com



NOTES:

1) FOR OPTIMAL REINFORCEMENT PLACEMENT IN THE NUDURA FORM, SPACING OF HORIZONTAL REINFORCEMENT TO BE SPECIFIED AT 18" (457mm) O.C. AND VERTICAL REINFORCEMENT TO BE SPECIFIED AT MULTIPLES OF 8" (203mm) O.C. REFER TO NUDURA REINFORCEMENT PLACEMENT DETAILS.

This detail is for general informational purposes only. The project design professional determines, in its sole discretion, whether this detail or a functionally equivalent detail is best suited for the project with respect to any architecture, engineering, and design requirements, including any local building code requirements. If this document is not reviewed and the product is not approved for use by a licensed design professional, the customer agrees that the detail may contain substantive flaws requiring correction, and hereby releases Tremco CPG Inc. from any and all liability related to the design and installation of the product. This detail is subject to change without notice. Contact Tremco to ensure you have the most recent version.

Non-Combustible Construction - Demising Wall Roof Connections

Detail: Nudura 8" (203mm) Form Unit, Hollow Core Precast Roof, Non-Bearing Demising Wall

File Name:

Drawn by: KS

Checked by: KS

Scale: 1:8

G8A04

Revision #: 01

Revised by: KAB

Date: 3/13/2024

www.tremcocpg.com



Nudura Technical Support: 866-468-6299
International: +1 705-726-9499



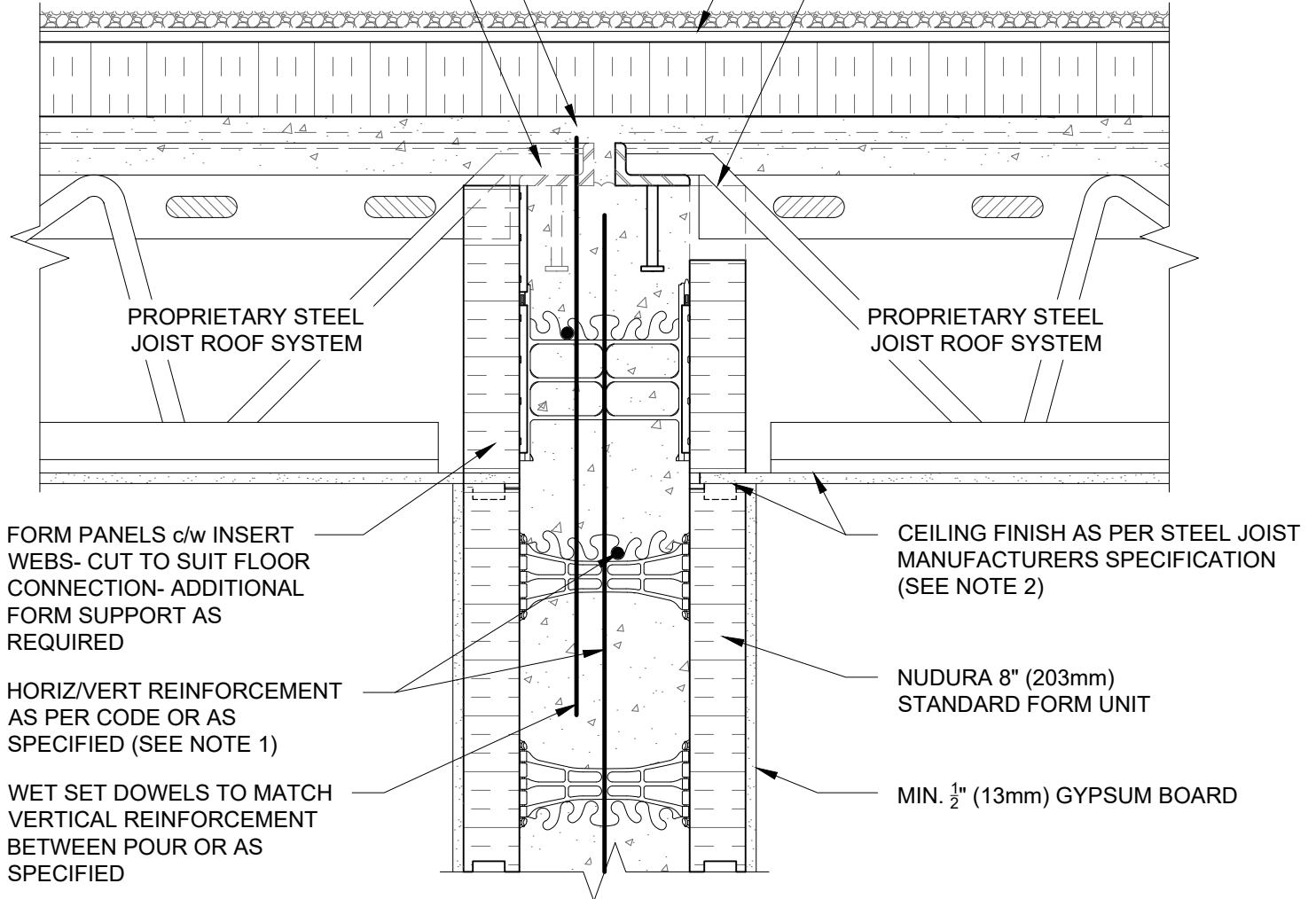
Construction Products Group

ALLOW FLOOR SLAB TO
REST ON TO BEARING
WALL CONCRETE

PROPRIETARY STEEL JOIST AND
CONNECTION SHOWN BEYOND
TO ALLOW FOR STAGGERING OF
THE JOISTS

FIBER BOARD SUBSTRATE
w/ ROOF MEMBRANE
ON 3 1/2" (89mm) RIGID
INSULATION

EPS FOAM REMOVED AT
JOIST LOCATIONS ONLY TO
ALLOW JOIST PLACEMENT



FORM PANELS c/w INSERT
WEBS- CUT TO SUIT FLOOR
CONNECTION- ADDITIONAL
FORM SUPPORT AS
REQUIRED

HORIZ/VERT REINFORCEMENT
AS PER CODE OR AS
SPECIFIED (SEE NOTE 1)

WET SET DOWELS TO MATCH
VERTICAL REINFORCEMENT
BETWEEN POUR OR AS
SPECIFIED

CEILING FINISH AS PER STEEL JOIST
MANUFACTURERS SPECIFICATION
(SEE NOTE 2)

NUDURA 8" (203mm)
STANDARD FORM UNIT

MIN. 1/2" (13mm) GYPSUM BOARD

NOTES:

1) FOR OPTIMAL REINFORCEMENT PLACEMENT IN THE NUDURA FORM, SPACING OF HORIZONTAL REINFORCEMENT TO BE SPECIFIED AT 18" (457mm) O.C. AND VERTICAL REINFORCEMENT TO BE SPECIFIED AT MULTIPLES OF 8" (203mm) O.C. REFER TO NUDURA REINFORCEMENT PLACEMENT DETAILS.

2) WHERE GYPSUM BOARD IS REQUIRED TO COMPLETE FIRE RATED ASSEMBLY, EPS FOAM KERF CUT TO ENABLE CEILING FINISH TO PROVIDE THERMAL BARRIER CONTACT TO CONCRETE.

This detail is for general informational purposes only. The project design professional determines, in its sole discretion, whether this detail or a functionally equivalent detail is best suited for the project with respect to any architecture, engineering, and design requirements, including any local building code requirements. If this document is not reviewed and the product is not approved for use by a licensed design professional, the customer agrees that the detail may contain substantive flaws requiring correction, and hereby releases Tremco CPG Inc. from any and all liability related to the design and installation of the product. This detail is subject to change without notice. Contact Tremco to ensure you have the most recent version.

Non-Combustible Construction - Demising Wall Roof Connections



Nudura Technical Support: 866-468-6299
International: +1 705-726-9499

Detail: Nudura 8" (203mm) Form Unit, Steel Joist Roof System, Bearing Demising Wall

Drawn by: KS

Checked by: KS

Scale: 1:8

Revision #: 01

Revised by: KAB

Date: 3/13/2024

File Name:

G8B03



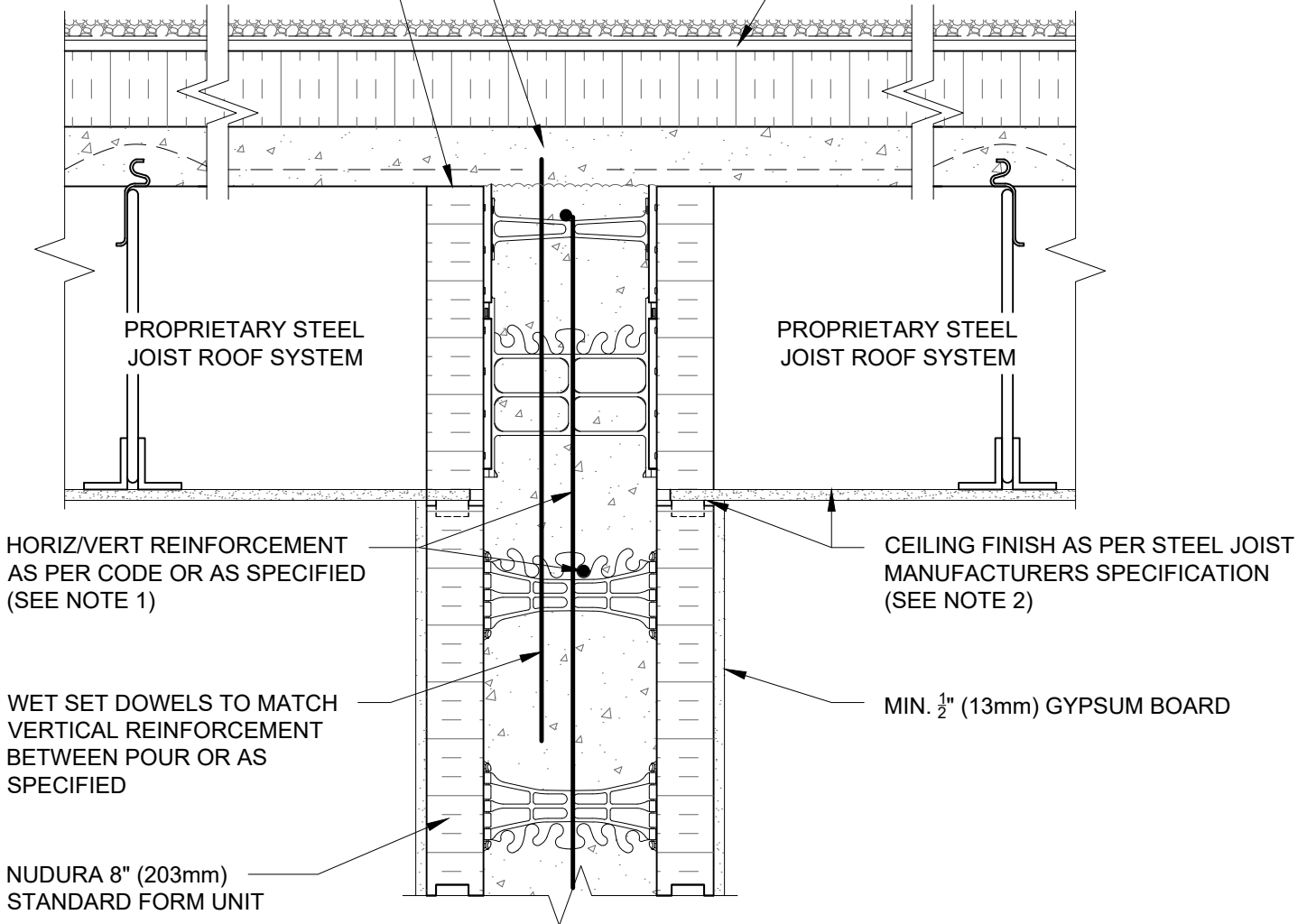
Construction Products Group

www.tremcocpg.com

ALLOW ROOF SLAB TO
REST ON TO BEARING
WALL CONCRETE

FORM PANELS c/w INSERT
WEBS- CUT TO SUIT ROOF
CONNECTION- ADDITIONAL
FORM SUPPORT AS
REQUIRED

FIBER BOARD SUBSTRATE
w/ ROOF MEMBRANE
ON 3 1/2" (89mm) RIGID
INSULATION



NOTES:

1) FOR OPTIMAL REINFORCEMENT PLACEMENT IN THE NUDURA FORM, SPACING OF HORIZONTAL REINFORCEMENT TO BE SPECIFIED AT 18" (457mm) O.C. AND VERTICAL REINFORCEMENT TO BE SPECIFIED AT MULTIPLES OF 8" (203mm) O.C. REFER TO NUDURA REINFORCEMENT PLACEMENT DETAILS.

2) WHERE GYPSUM BOARD IS REQUIRED TO COMPLETE FIRE RATED ASSEMBLY, EPS FOAM KERF CUT TO ENABLE CEILING FINISH TO PROVIDE THERMAL BARRIER CONTACT TO CONCRETE.

This detail is for general informational purposes only. The project design professional determines, in its sole discretion, whether this detail or a functionally equivalent detail is best suited for the project with respect to any architecture, engineering, and design requirements, including any local building code requirements. If this document is not reviewed and the product is not approved for use by a licensed design professional, the customer agrees that the detail may contain substantive flaws requiring correction, and hereby releases Tremco CPG Inc. from any and all liability related to the design and installation of the product. This detail is subject to change without notice. Contact Tremco to ensure you have the most recent version.

Non-Combustible Construction - Demising Wall Roof Connections



Nudura Technical Support: 866-468-6299
International: +1 705-726-9499

Detail: Nudura 8" (203mm) Form Unit, Steel Joist Roof System,
Non-Bearing Demising Wall

Drawn by: KS

Checked by: KS

Scale: 1:8

Revision #: 01

Revised by: KAB

Date: 3/13/2024

File Name:

G8B04



Construction Products Group

www.tremcocpg.com

HEIGHT OF PARAPET TO BE DETERMINED BY ENGINEERING DESIGN

MIN. $\frac{5}{8}$ " (16mm) CEMENT BOARD PANELS TO BE INSTALLED PREPOUR AS FORM PANEL FOR CONCRETE CAP AT TOP OF WALL INSTALLED ON SLOPE TO MATCH ROOF PITCH

CONTINUOUS STEEL ANGLE AS SPECIFIED

GYPSUM BOARD FINISHED/FIRE STOP INSTALLED AT JOISTS AS PER CODE

U BRACKET ANCHOR INSERT

WET SET DOWELS TO MATCH VERTICAL REINFORCEMENT BETWEEN POUR OR AS SPECIFIED

HORIZ/VERT REINFORCEMENT AS PER CODE OR AS SPECIFIED (SEE NOTE 1)

CAP FLASHING CLIPPED TO COUNTER FLASHING

EXOAIR 110AT OR FUNCTIONAL EQUIVALENT 3" (76 mm) MIN. ON CONCRETE CAP (BOTH SIDES)

ADDITIONAL FORM SUPPORT AT CEMENT BOARD PANELS AS REQUIRED

MINIMUM 6" (152mm) THICK CONTINUOUS CONCRETE CAP AT TOP OF WALL POURED INTEGRAL WITH FIREWALL OR AS PER LOCAL CODE

EPS CANT STRIP

FIBER BOARD SUBSTRATE w/ ROOF MEMBRANE ON 3 $\frac{1}{2}$ " (89mm) RIGID INSULATION

COMPOSITE STEEL ROOF DECK

OWSJ

INTERIOR INSULATION REMOVED AT JOIST LOCATIONS

MIN. $\frac{1}{2}$ " (13mm) GYPSUM BOARD

NUDURA 8" (203mm) STANDARD FORM UNIT

NOTES:

1) FOR OPTIMAL REINFORCEMENT PLACEMENT IN THE NUDURA FORM, SPACING OF HORIZONTAL REINFORCEMENT TO BE SPECIFIED AT 18" (457mm) O.C. AND VERTICAL REINFORCEMENT TO BE SPECIFIED AT MULTIPLES OF 8" (203mm) O.C. REFER TO NUDURA REINFORCEMENT PLACEMENT DETAILS.

This detail is for general informational purposes only. The project design professional determines, in its sole discretion, whether this detail or a functionally equivalent detail is best suited for the project with respect to any architecture, engineering, and design requirements, including any local building code requirements. If this document is not reviewed and the product is not approved for use by a licensed design professional, the customer agrees that the detail may contain substantive flaws requiring correction, and hereby releases Tremco CPG Inc. from any and all liability related to the design and installation of the product. This detail is subject to change without notice. Contact Tremco to ensure you have the most recent version.

Non-Combustible Construction - Demising Wall Roof Connections



Nudura Technical Support: 866-468-6299
International: +1 705-726-9499

Detail: Nudura 8" (203mm) Form Unit, Steel Joist Roof, Bearing Demising Wall

Drawn by: KS

Checked by: KS

Scale: 1:8

Revision #: 01

Revised by: KAB

Date: 3/13/2024

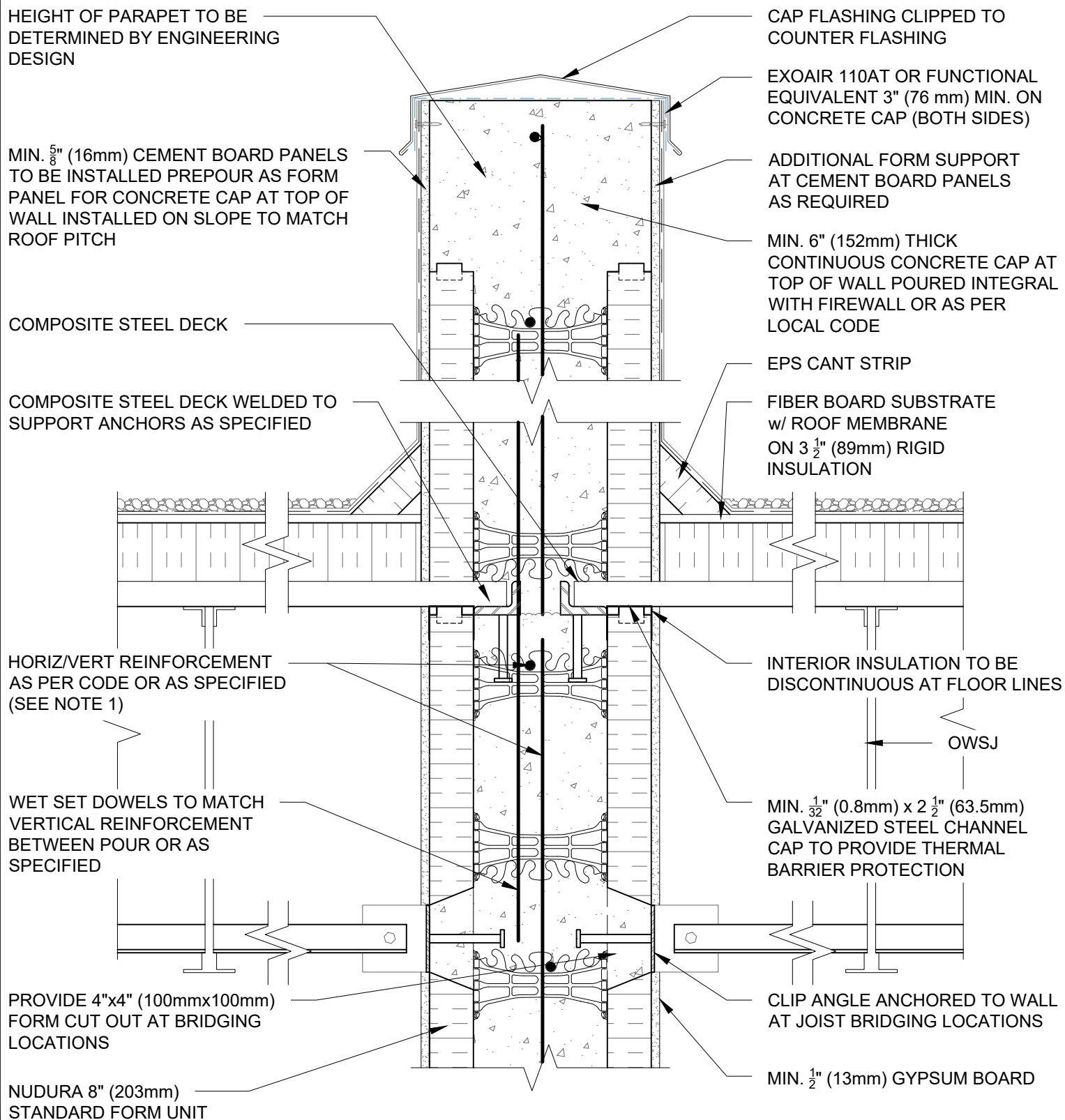
File Name:

G8C03



Construction Products Group

www.tremcocpg.com



NOTES:

1) FOR OPTIMAL REINFORCEMENT PLACEMENT IN THE NUDURA FORM, SPACING OF HORIZONTAL REINFORCEMENT TO BE SPECIFIED AT 18" (457mm) O.C. AND VERTICAL REINFORCEMENT TO BE SPECIFIED AT MULTIPLES OF 8" (203mm) O.C. REFER TO NUDURA REINFORCEMENT PLACEMENT DETAILS.

This detail is for general informational purposes only. The project design professional determines, in its sole discretion, whether this detail or a functionally equivalent detail is best suited for the project with respect to any architecture, engineering, and design requirements, including any local building code requirements. If this document is not reviewed and the product is not approved for use by a licensed design professional, the customer agrees that the detail may contain substantive flaws requiring correction, and hereby releases Tremco CPG Inc. from any and all liability related to the design and installation of the product. This detail is subject to change without notice. Contact Tremco to ensure you have the most recent version.

Non-Combustible Construction - Demising Wall Roof Connections



Nudura Technical Support: 866-468-6299
International: +1 705-726-9499

Detail: Nudura 8" (203mm) Form Unit, Steel Joist Roof, Non-Bearing Demising Wall

Drawn by: KS

Checked by: KS

Scale: 1:8

Revision #: 01

Revised by: KAB

Date: 3/13/2024

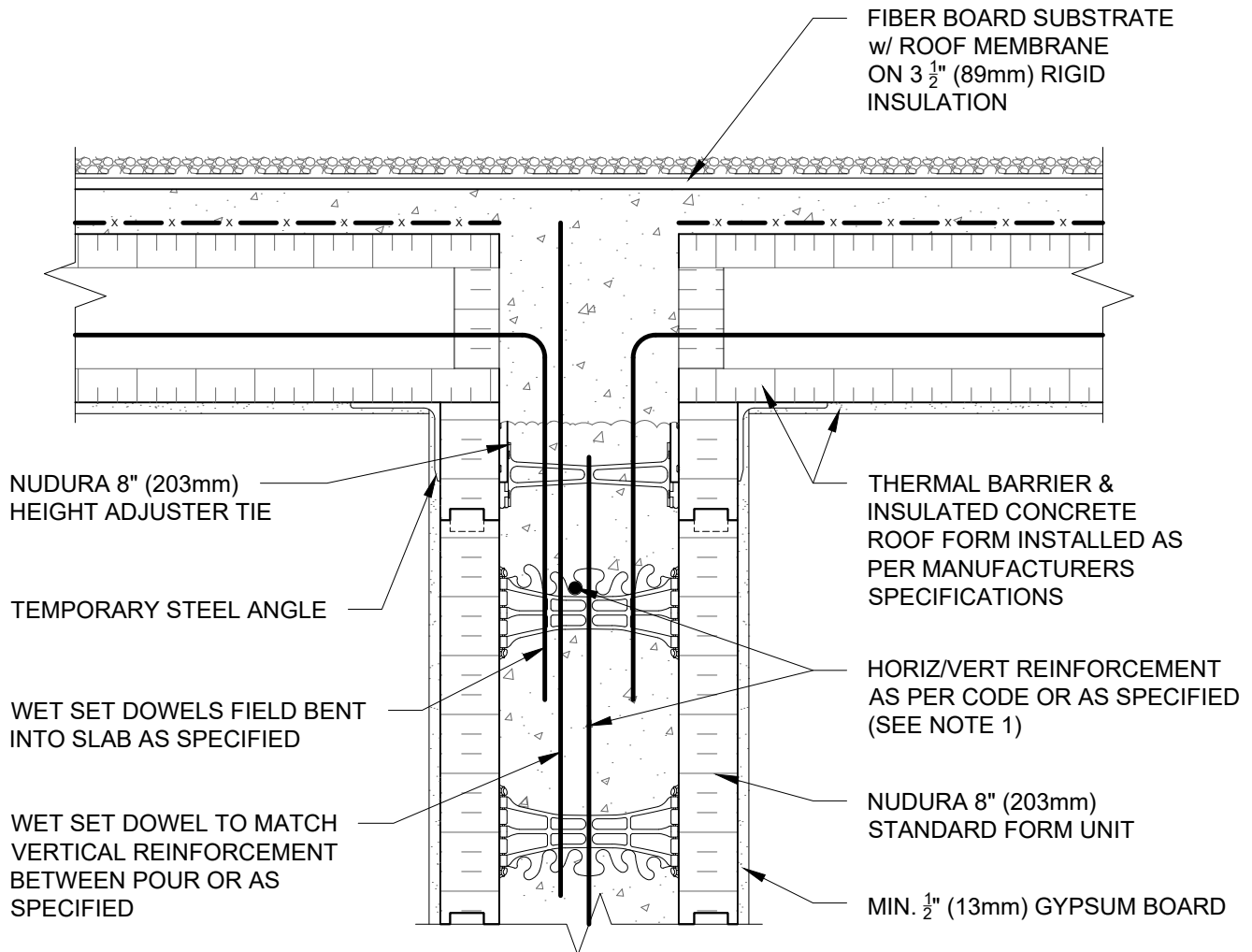
File Name:

G8C04



Construction Products Group

www.tremcocpg.com



NOTES:

1) FOR OPTIMAL REINFORCEMENT PLACEMENT IN THE NUDURA FORM, SPACING OF HORIZONTAL REINFORCEMENT TO BE SPECIFIED AT 18" (457mm) O.C. AND VERTICAL REINFORCEMENT TO BE SPECIFIED AT MULTIPLES OF 8" (203mm) O.C. REFER TO NUDURA REINFORCEMENT PLACEMENT DETAILS.

This detail is for general informational purposes only. The project design professional determines, in its sole discretion, whether this detail or a functionally equivalent detail is best suited for the project with respect to any architecture, engineering, and design requirements, including any local building code requirements. If this document is not reviewed and the product is not approved for use by a licensed design professional, the customer agrees that the detail may contain substantive flaws requiring correction, and hereby releases Tremco CPG Inc. from any and all liability related to the design and installation of the product. This detail is subject to change without notice. Contact Tremco to ensure you have the most recent version.

Non-Combustible Construction - Demising Wall Roof Connections

Detail: Nudura 8" (203mm) Form Unit, ICRS Connection, ICRS Resting on Form, Bearing Demising Wall

Drawn by: KS

Checked by: KS

Scale: 1:8

Revision #: 01

Revised by: KAB

Date: 3/13/2024

File Name:

G8D03

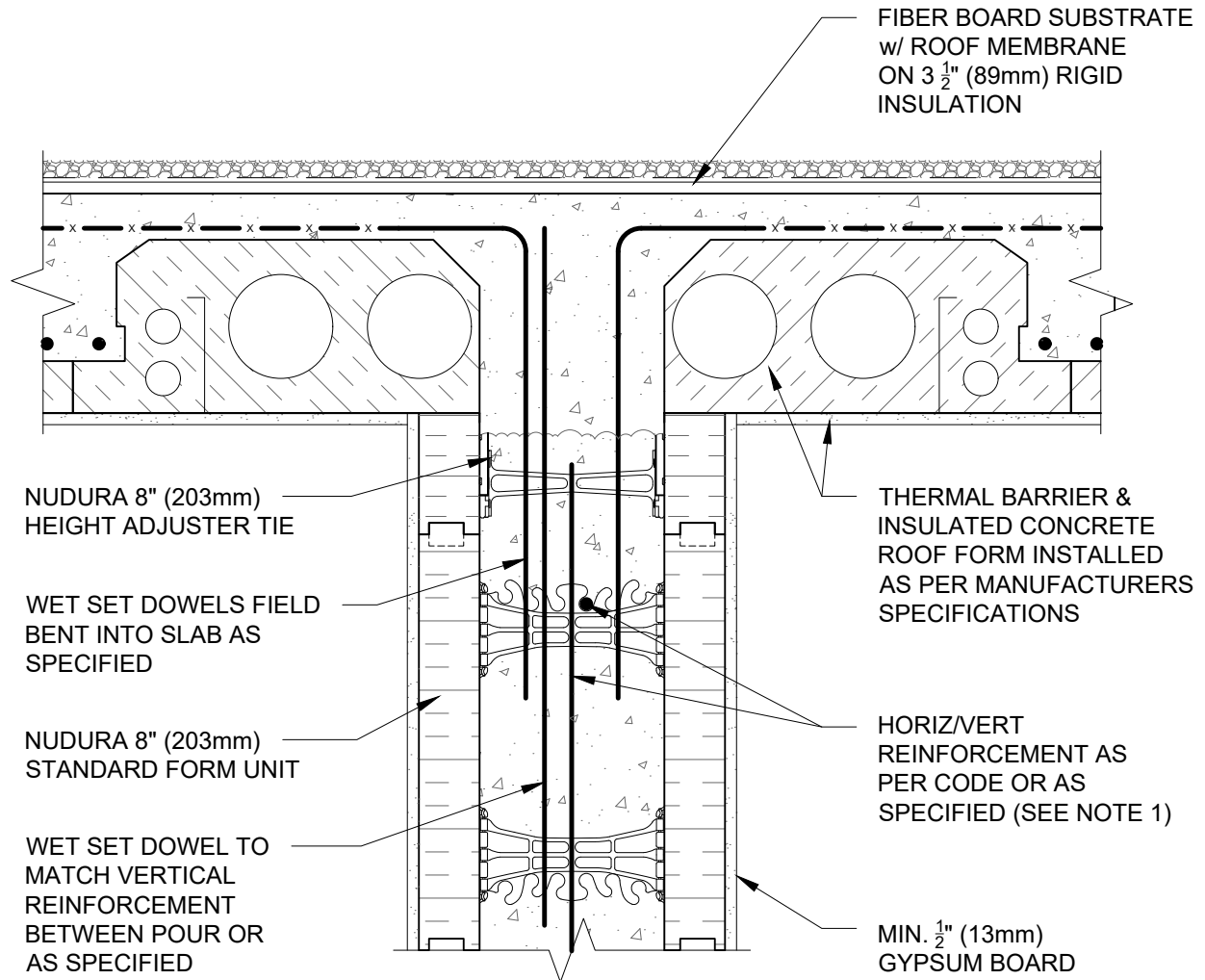


Nudura Technical Support: 866-468-6299
International: +1 705-726-9499

www.tremcocpg.com



Construction Products Group



NOTES:

1) FOR OPTIMAL REINFORCEMENT PLACEMENT IN THE NUDURA FORM, SPACING OF HORIZONTAL REINFORCEMENT TO BE SPECIFIED AT 18" (457mm) O.C. AND VERTICAL REINFORCEMENT TO BE SPECIFIED AT MULTIPLES OF 8" (203mm) O.C. REFER TO NUDURA REINFORCEMENT PLACEMENT DETAILS.

This detail is for general informational purposes only. The project design professional determines, in its sole discretion, whether this detail or a functionally equivalent detail is best suited for the project with respect to any architecture, engineering, and design requirements, including any local building code requirements. If this document is not reviewed and the product is not approved for use by a licensed design professional, the customer agrees that the detail may contain substantive flaws requiring correction, and hereby releases Tremco CPG Inc. from any and all liability related to the design and installation of the product. This detail is subject to change without notice. Contact Tremco to ensure you have the most recent version.

Non-Combustible Construction - Demising Wall Roof Connections

Detail: Nudura 8" (203mm) Form Unit, ICRS Connection, ICRS Resting on Form, Non-Bearing Demising Wall

File Name:

Drawn by: KS

Checked by: KS

Scale: 1:8

G8D04

Revision #: 01

Revised by: KAB

Date: 3/13/2024

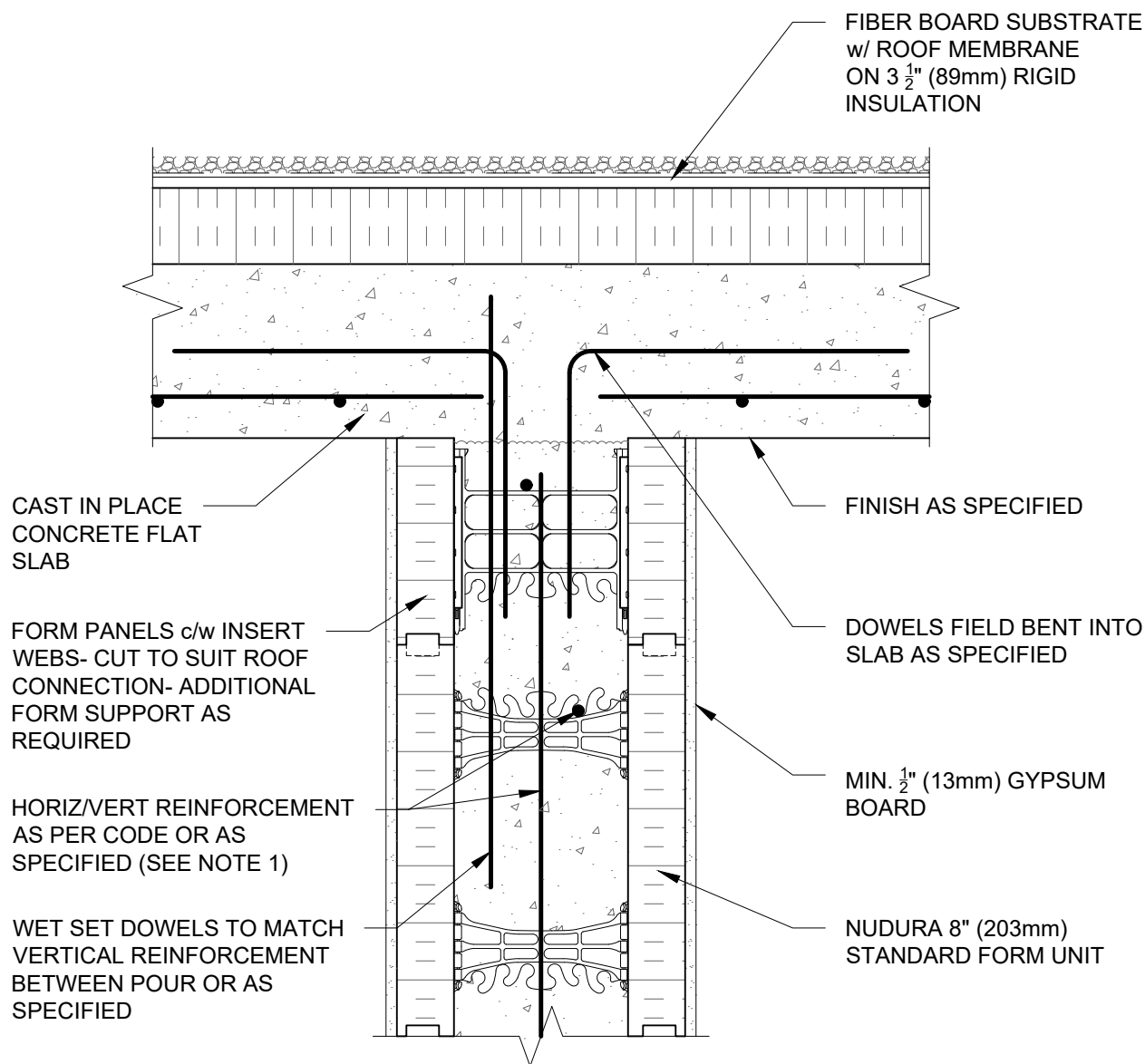
www.tremcocpg.com



Nudura Technical Support: 866-468-6299
International: +1 705-726-9499



Construction Products Group



NOTES:

1) FOR OPTIMAL REINFORCEMENT PLACEMENT IN THE NUDURA FORM, SPACING OF HORIZONTAL REINFORCEMENT TO BE SPECIFIED AT 18" (457mm) O.C. AND VERTICAL REINFORCEMENT TO BE SPECIFIED AT MULTIPLES OF 8" (203mm) O.C. REFER TO NUDURA REINFORCEMENT PLACEMENT DETAILS.

This detail is for general informational purposes only. The project design professional determines, in its sole discretion, whether this detail or a functionally equivalent detail is best suited for the project with respect to any architecture, engineering, and design requirements, including any local building code requirements. If this document is not reviewed and the product is not approved for use by a licensed design professional, the customer agrees that the detail may contain substantive flaws requiring correction, and hereby releases Tremco CPG Inc. from any and all liability related to the design and installation of the product. This detail is subject to change without notice. Contact Tremco to ensure you have the most recent version.

Non-Combustible Construction - Demising Wall Roof Connections



Nudura Technical Support: 866-468-6299
International: +1 705-726-9499

Detail: Nudura 8" (203mm) Form Unit, Concrete Flat Plate, Bearing Demising Wall

Drawn by: KS

Checked by: KS

Scale: 1:8

Revision #: 01

Revised by: KAB

Date: 3/13/2024

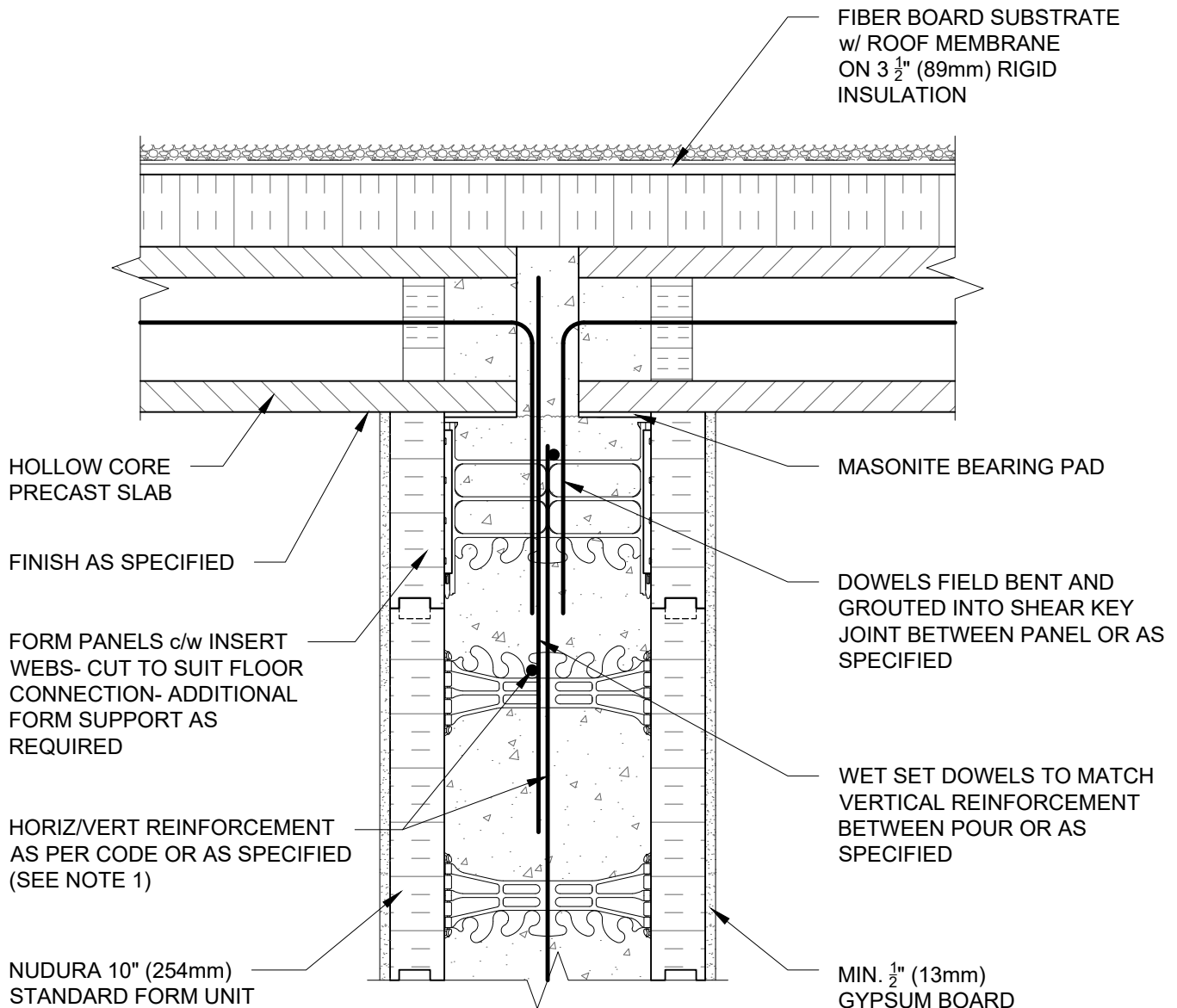
File Name:

G8E02



Construction Products Group

www.tremcocpg.com



NOTES:

1) FOR OPTIMAL REINFORCEMENT PLACEMENT IN THE NUDURA FORM, SPACING OF HORIZONTAL REINFORCEMENT TO BE SPECIFIED AT 18" (457mm) O.C. AND VERTICAL REINFORCEMENT TO BE SPECIFIED AT MULTIPLES OF 8" (203mm) O.C. REFER TO NUDURA REINFORCEMENT PLACEMENT DETAILS.

This detail is for general informational purposes only. The project design professional determines, in its sole discretion, whether this detail or a functionally equivalent detail is best suited for the project with respect to any architecture, engineering, and design requirements, including any local building code requirements. If this document is not reviewed and the product is not approved for use by a licensed design professional, the customer agrees that the detail may contain substantive flaws requiring correction, and hereby releases Tremco CPG Inc. from any and all liability related to the design and installation of the product. This detail is subject to change without notice. Contact Tremco to ensure you have the most recent version.

Non-Combustible Construction - Demising Wall Roof Connections



Nudura Technical Support: 866-468-6299
International: +1 705-726-9499

Detail: Nudura 10" (254mm) Form Unit, Hollow Core Precast Roof,
Bearing Demising Wall

Drawn by: KS

Checked by: KS

Scale: 1:8

Revision #: 01

Revised by: KAB

Date: 3/13/2024

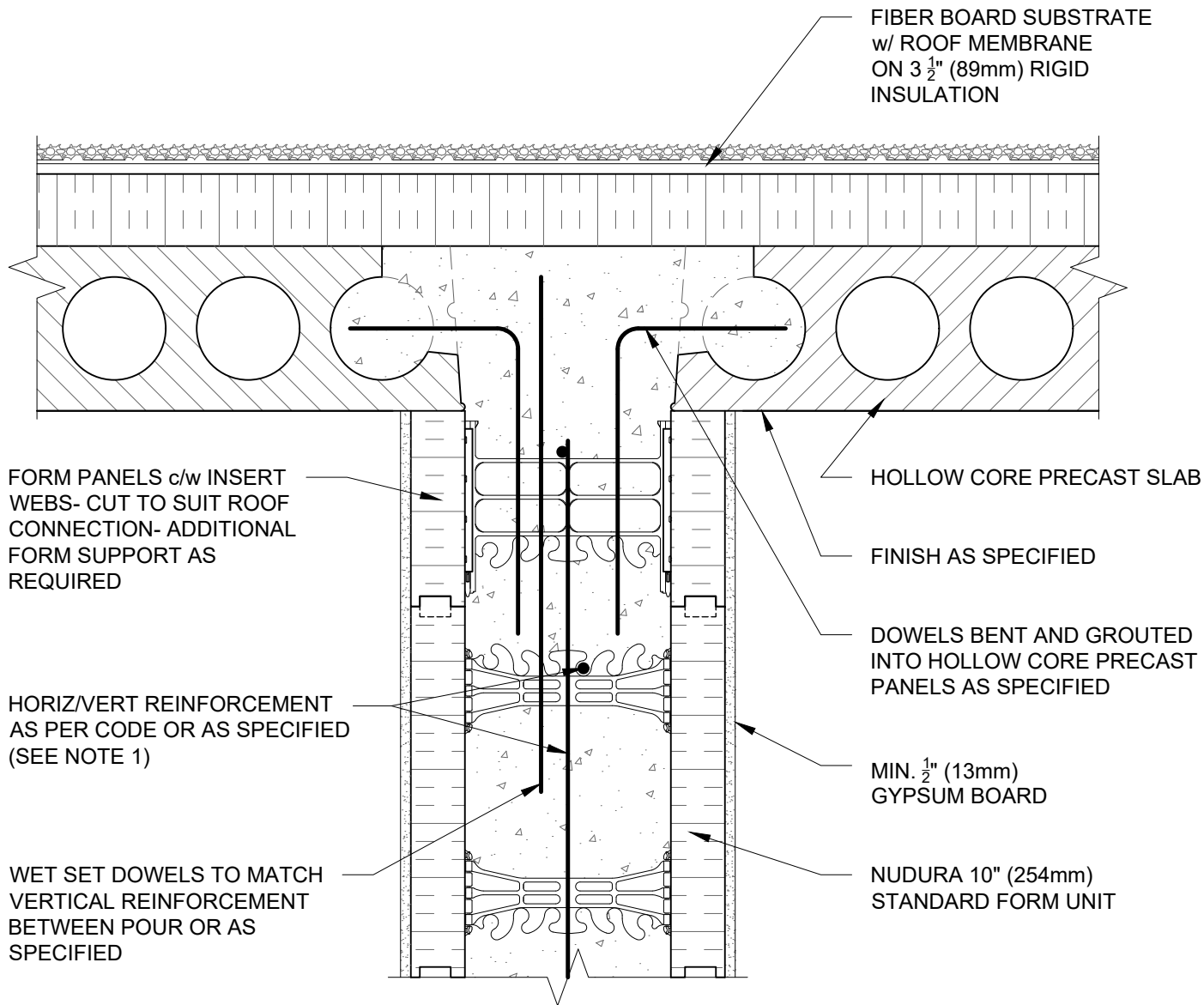
www.tremcocpg.com

File Name:

G10A03



Construction Products Group



NOTES:

1) FOR OPTIMAL REINFORCEMENT PLACEMENT IN THE NUDURA FORM, SPACING OF HORIZONTAL REINFORCEMENT TO BE SPECIFIED AT 18" (457mm) O.C. AND VERTICAL REINFORCEMENT TO BE SPECIFIED AT MULTIPLES OF 8" (203mm) O.C. REFER TO NUDURA REINFORCEMENT PLACEMENT DETAILS.

This detail is for general informational purposes only. The project design professional determines, in its sole discretion, whether this detail or a functionally equivalent detail is best suited for the project with respect to any architecture, engineering, and design requirements, including any local building code requirements. If this document is not reviewed and the product is not approved for use by a licensed design professional, the customer agrees that the detail may contain substantive flaws requiring correction, and hereby releases Tremco CPG Inc. from any and all liability related to the design and installation of the product. This detail is subject to change without notice. Contact Tremco to ensure you have the most recent version.

Non-Combustible Construction - Demising Wall Roof Connections



Nudura Technical Support: 866-468-6299
International: +1 705-726-9499

Detail: Nudura 10" (254mm) Form Unit, Hollow Core Precast Roof,
Non-Bearing Demising Wall

Drawn by: KS

Checked by: KS

Scale: 1:8

Revision #: 01

Revised by: KAB

Date: 3/13/2024

File Name:

G10A04



Construction Products Group

www.tremcocpg.com

ALLOW FLOOR SLAB TO
REST ON TO BEARING
WALL CONCRETE

PROPRIETARY STEEL JOIST AND
CONNECTION SHOWN BEYOND
TO ALLOW FOR STAGGERING OF
THE JOISTS

FIBER BOARD SUBSTRATE
w/ ROOF MEMBRANE
ON $3\frac{1}{2}$ " (89mm) RIGID
INSULATION

EPS FOAM REMOVED AT
JOIST LOCATIONS ONLY TO
ALLOW JOIST PLACEMENT

PROPRIETARY STEEL
JOIST ROOF SYSTEM

PROPRIETARY STEEL
JOIST ROOF SYSTEM

FORM PANELS c/w INSERT
WEBS- CUT TO SUIT FLOOR
CONNECTION- ADDITIONAL
FORM SUPPORT AS
REQUIRED

HORIZ/VERT REINFORCEMENT
AS PER CODE OR AS
SPECIFIED (SEE NOTE 1)

WET SET DOWELS TO MATCH
VERTICAL REINFORCEMENT
BETWEEN POUR OR AS
SPECIFIED

CEILING FINISH AS PER STEEL JOIST
MANUFACTURERS SPECIFICATION
(SEE NOTE 2)

NUDURA 10" (254mm)
STANDARD FORM UNIT

MIN. $\frac{1}{2}$ " (13mm) GYPSUM BOARD

NOTES:

1) FOR OPTIMAL REINFORCEMENT PLACEMENT IN THE NUDURA FORM, SPACING OF HORIZONTAL REINFORCEMENT TO BE SPECIFIED AT 18" (457mm) O.C. AND VERTICAL REINFORCEMENT TO BE SPECIFIED AT MULTIPLES OF 8" (203mm) O.C. REFER TO NUDURA REINFORCEMENT PLACEMENT DETAILS.

2) WHERE GYPSUM BOARD IS REQUIRED TO COMPLETE FIRE RATED ASSEMBLY, EPS FOAM KERF CUT TO ENABLE CEILING FINISH TO PROVIDE THERMAL BARRIER CONTACT TO CONCRETE.

This detail is for general informational purposes only. The project design professional determines, in its sole discretion, whether this detail or a functionally equivalent detail is best suited for the project with respect to any architecture, engineering, and design requirements, including any local building code requirements. If this document is not reviewed and the product is not approved for use by a licensed design professional, the customer agrees that the detail may contain substantive flaws requiring correction, and hereby releases Tremco CPG Inc. from any and all liability related to the design and installation of the product. This detail is subject to change without notice. Contact Tremco to ensure you have the most recent version.

Non-Combustible Construction - Demising Wall Roof Connections



Nudura Technical Support: 866-468-6299
International: +1 705-726-9499

Detail: Nudura 10" (254mm) Form Unit, Steel Joist Roof System,
Bearing Demising Wall

Drawn by: KS

Checked by: KS

Scale: 1:8

Revision #: 01

Revised by: KAB

Date: 3/13/2024

File Name:

G10B03



Construction Products Group

www.tremcocpg.com

ALLOW ROOF SLAB TO
REST ON TO BEARING
WALL CONCRETE

FORM PANELS c/w INSERT
WEBS- CUT TO SUIT ROOF
CONNECTION- ADDITIONAL
FORM SUPPORT AS
REQUIRED

FIBER BOARD SUBSTRATE
w/ ROOF MEMBRANE
ON 3 1/2" (89mm) RIGID
INSULATION

PROPRIETARY STEEL
JOIST ROOF SYSTEM

PROPRIETARY STEEL
JOIST ROOF SYSTEM

HORIZ/VERT REINFORCEMENT
AS PER CODE OR AS SPECIFIED
(SEE NOTE 1)

CEILING FINISH AS PER STEEL JOIST
MANUFACTURERS SPECIFICATION
(SEE NOTE 2)

WET SET DOWELS TO MATCH
VERTICAL REINFORCEMENT
BETWEEN POUR OR AS
SPECIFIED

MIN. 1/2" (13mm) GYPSUM BOARD

NUDURA 10" (254mm)
STANDARD FORM UNIT

NOTES:

1) FOR OPTIMAL REINFORCEMENT PLACEMENT IN THE NUDURA FORM, SPACING OF HORIZONTAL REINFORCEMENT TO BE SPECIFIED AT 18" (457mm) O.C. AND VERTICAL REINFORCEMENT TO BE SPECIFIED AT MULTIPLES OF 8" (203mm) O.C. REFER TO NUDURA REINFORCEMENT PLACEMENT DETAILS.

2) WHERE GYPSUM BOARD IS REQUIRED TO COMPLETE FIRE RATED ASSEMBLY, EPS FOAM KERF CUT TO ENABLE CEILING FINISH TO PROVIDE THERMAL BARRIER CONTACT TO CONCRETE.

This detail is for general informational purposes only. The project design professional determines, in its sole discretion, whether this detail or a functionally equivalent detail is best suited for the project with respect to any architecture, engineering, and design requirements, including any local building code requirements. If this document is not reviewed and the product is not approved for use by a licensed design professional, the customer agrees that the detail may contain substantive flaws requiring correction, and hereby releases Tremco CPG Inc. from any and all liability related to the design and installation of the product. This detail is subject to change without notice. Contact Tremco to ensure you have the most recent version.

Non-Combustible Construction - Demising Wall Roof Connections



Nudura Technical Support: 866-468-6299
International: +1 705-726-9499

Detail: Nudura 10" (254mm) Form Unit, Steel Joist Roof System,
Non-Bearing Demising Wall

Drawn by: KS

Checked by: KS

Scale: 1:8

Revision #: 01

Revised by: KAB

Date: 3/13/2024

File Name:

G10B04



Construction Products Group

www.tremcocpg.com

HEIGHT OF PARAPET TO BE DETERMINED BY ENGINEERING DESIGN

MIN. $\frac{5}{8}$ " (16mm) CEMENT BOARD PANELS TO BE INSTALLED PREPOUR AS FORM PANEL FOR CONCRETE CAP AT TOP OF WALL INSTALLED ON SLOPE TO MATCH ROOF PITCH

CONTINUOUS STEEL ANGLE AS SPECIFIED

GYPSUM BOARD FINISHED/FIRE STOP INSTALLED AT JOISTS AS PER CODE

U BRACKET ANCHOR INSERT

WET SET DOWELS TO MATCH VERTICAL REINFORCEMENT BETWEEN POUR OR AS SPECIFIED

HORIZ/VERT REINFORCEMENT AS PER CODE OR AS SPECIFIED (SEE NOTE 1)

CAP FLASHING CLIPPED TO COUNTER FLASHING

EXOAIR 110AT OR FUNCTIONAL EQUIVALENT 3" (76 mm) MIN. ON CONCRETE CAP (BOTH SIDES)

ADDITIONAL FORM SUPPORT AT CEMENT BOARD PANELS AS REQUIRED

MINIMUM 6" (152mm) THICK CONTINUOUS CONCRETE CAP AT TOP OF WALL POURED INTEGRAL WITH FIREWALL OR AS PER LOCAL CODE

EPS CANT STRIP

FIBER BOARD SUBSTRATE w/ ROOF MEMBRANE ON 3 $\frac{1}{2}$ " (89mm) RIGID INSULATION

COMPOSITE STEEL ROOF DECK

OWSJ

INTERIOR INSULATION REMOVED AT JOIST LOCATIONS

MIN. $\frac{1}{2}$ " (13mm) GYPSUM BOARD

NUDURA 10" (254mm) STANDARD FORM UNIT

NOTES:

1) FOR OPTIMAL REINFORCEMENT PLACEMENT IN THE NUDURA FORM, SPACING OF HORIZONTAL REINFORCEMENT TO BE SPECIFIED AT 18" (457mm) O.C. AND VERTICAL REINFORCEMENT TO BE SPECIFIED AT MULTIPLES OF 8" (203mm) O.C. REFER TO NUDURA REINFORCEMENT PLACEMENT DETAILS.

This detail is for general informational purposes only. The project design professional determines, in its sole discretion, whether this detail or a functionally equivalent detail is best suited for the project with respect to any architecture, engineering, and design requirements, including any local building code requirements. If this document is not reviewed and the product is not approved for use by a licensed design professional, the customer agrees that the detail may contain substantive flaws requiring correction, and hereby releases Tremco CPG Inc. from any and all liability related to the design and installation of the product. This detail is subject to change without notice. Contact Tremco to ensure you have the most recent version.

Non-Combustible Construction - Demising Wall Roof Connections



Nudura Technical Support: 866-468-6299
International: +1 705-726-9499

Detail: Nudura 10" (254mm) Form Unit, Steel Joist Roof, Bearing Demising Wall

Drawn by: KS

Checked by: KS

Scale: 1:8

Revision #: 01

Revised by: KAB

Date: 3/13/2024

www.tremcocpg.com

File Name:

G10C03



Construction Products Group

HEIGHT OF PARAPET TO BE DETERMINED BY ENGINEERING DESIGN

MIN. $\frac{5}{8}$ " (16mm) CEMENT BOARD PANELS TO BE INSTALLED PREPOUR AS FORM PANEL FOR CONCRETE CAP AT TOP OF WALL INSTALLED ON SLOPE TO MATCH ROOF PITCH

COMPOSITE STEEL DECK

COMPOSITE STEEL DECK WELDED TO SUPPORT ANCHORS AS SPECIFIED

HORIZ/VERT REINFORCEMENT AS PER CODE OR AS SPECIFIED (SEE NOTE 1)

WET SET DOWELS TO MATCH VERTICAL REINFORCEMENT BETWEEN POUR OR AS SPECIFIED

PROVIDE 4"x4" (100mmx100mm) FORM CUT OUT AT BRIDGING LOCATIONS

NUDURA 10" (254mm) STANDARD FORM UNIT

CAP FLASHING CLIPPED TO COUNTER FLASHING

EXOAIR 110AT OR FUNCTIONAL EQUIVALENT 3" (76 mm) MIN. ON CONCRETE CAP (BOTH SIDES)

ADDITIONAL FORM SUPPORT AT CEMENT BOARD PANELS AS REQUIRED

MIN. 6" (152mm) THICK CONTINUOUS CONCRETE CAP AT TOP OF WALL POURED INTEGRAL WITH FIREWALL OR AS PER LOCAL CODE

EPS CANT STRIP

FIBER BOARD SUBSTRATE w/ ROOF MEMBRANE ON 3 $\frac{1}{2}$ " (89mm) RIGID INSULATION

INTERIOR INSULATION TO BE DISCONTINUOUS AT FLOOR LINES

OWSJ

MIN. $\frac{1}{32}$ " (0.8mm) x 2 $\frac{1}{2}$ " (63.5mm) GALVANIZED STEEL CHANNEL CAP TO PROVIDE THERMAL BARRIER PROTECTION

CLIP ANGLE ANCHORED TO WALL AT JOIST BRIDGING LOCATIONS

MIN. $\frac{1}{2}$ " (13mm) GYPSUM BOARD

NOTES:

1) FOR OPTIMAL REINFORCEMENT PLACEMENT IN THE NUDURA FORM, SPACING OF HORIZONTAL REINFORCEMENT TO BE SPECIFIED AT 18" (457mm) O.C. AND VERTICAL REINFORCEMENT TO BE SPECIFIED AT MULTIPLES OF 8" (203mm) O.C. REFER TO NUDURA REINFORCEMENT PLACEMENT DETAILS.

This detail is for general informational purposes only. The project design professional determines, in its sole discretion, whether this detail or a functionally equivalent detail is best suited for the project with respect to any architecture, engineering, and design requirements, including any local building code requirements. If this document is not reviewed and the product is not approved for use by a licensed design professional, the customer agrees that the detail may contain substantive flaws requiring correction, and hereby releases Tremco CPG Inc. from any and all liability related to the design and installation of the product. This detail is subject to change without notice. Contact Tremco to ensure you have the most recent version.

Non-Combustible Construction - Demising Wall Roof Connections



Nudura Technical Support: 866-468-6299
International: +1 705-726-9499

Detail: Nudura 10" (254mm) Form Unit, Steel Joist Roof, Non-Bearing Demising Wall

Drawn by: KS

Checked by: KS

Scale: 1:8

Revision #: 01

Revised by: KAB

Date: 3/13/2024

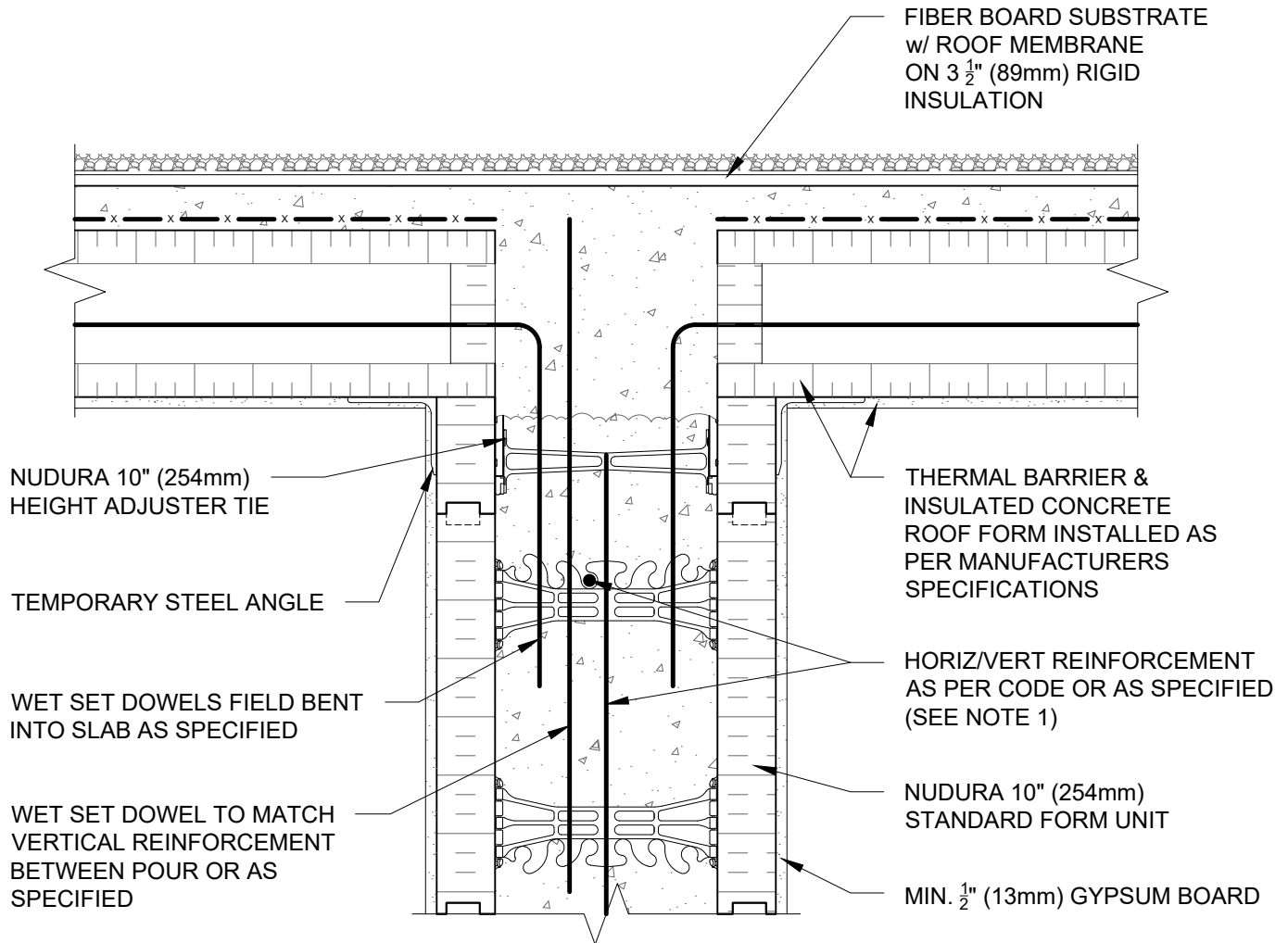
www.tremcocpg.com

File Name:

G10C04



Construction Products Group



NOTES:

1) FOR OPTIMAL REINFORCEMENT PLACEMENT IN THE NUDURA FORM, SPACING OF HORIZONTAL REINFORCEMENT TO BE SPECIFIED AT 18" (457mm) O.C. AND VERTICAL REINFORCEMENT TO BE SPECIFIED AT MULTIPLES OF 8" (203mm) O.C. REFER TO NUDURA REINFORCEMENT PLACEMENT DETAILS.

This detail is for general informational purposes only. The project design professional determines, in its sole discretion, whether this detail or a functionally equivalent detail is best suited for the project with respect to any architecture, engineering, and design requirements, including any local building code requirements. If this document is not reviewed and the product is not approved for use by a licensed design professional, the customer agrees that the detail may contain substantive flaws requiring correction, and hereby releases Tremco CPG Inc. from any and all liability related to the design and installation of the product. This detail is subject to change without notice. Contact Tremco to ensure you have the most recent version.

Non-Combustible Construction - Demising Wall Roof Connections



Nudura Technical Support: 866-468-6299
International: +1 705-726-9499

Detail: Nudura 10" (254mm) Form Unit, ICRS Connection, ICRS Resting on Form, Bearing Demising Wall

Drawn by: KS

Checked by: KS

Scale: 1:8

Revision #: 01

Revised by: KAB

Date: 3/13/2024

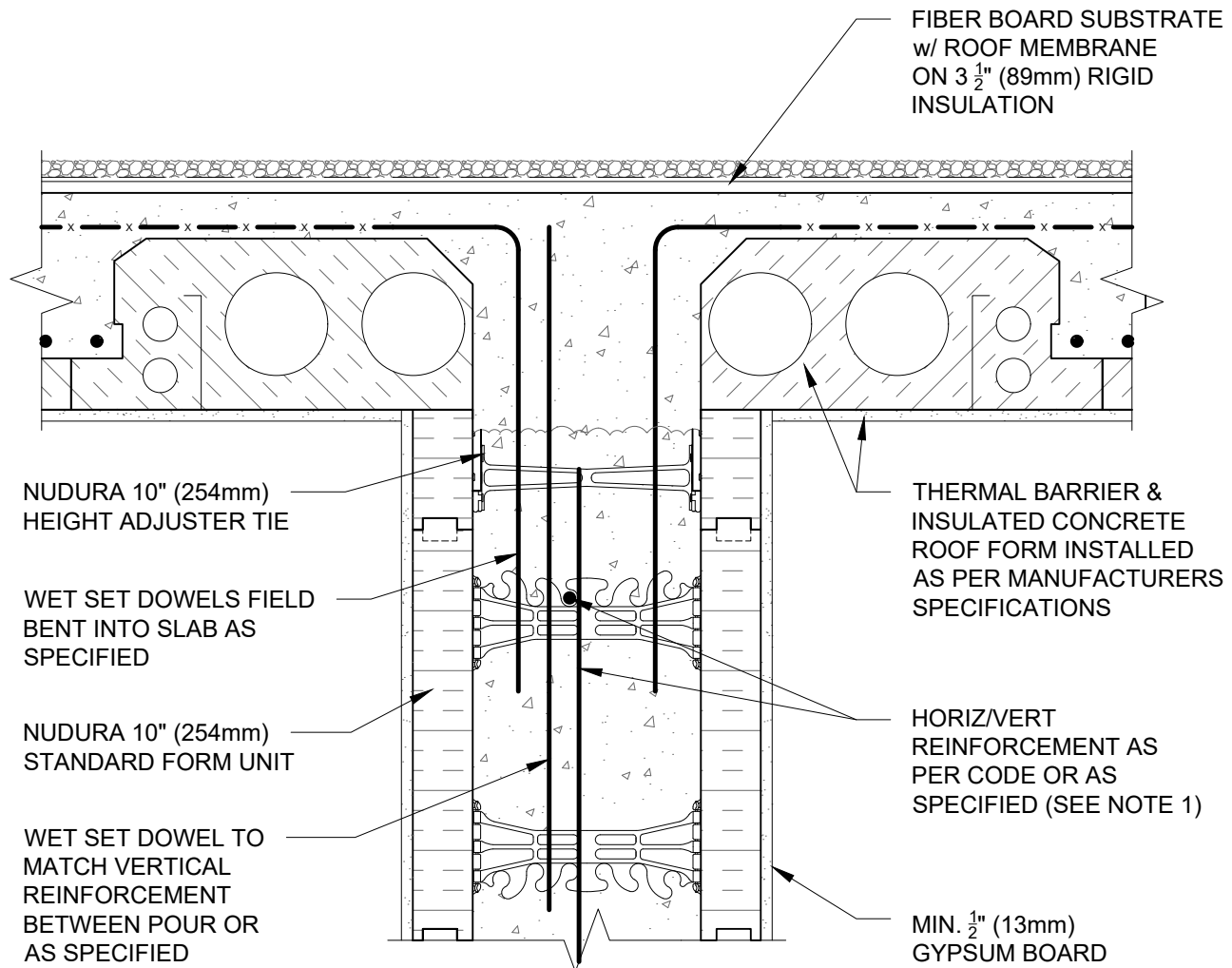
File Name:

G10D03



Construction Products Group

www.tremcocpg.com



NOTES:

1) FOR OPTIMAL REINFORCEMENT PLACEMENT IN THE NUDURA FORM, SPACING OF HORIZONTAL REINFORCEMENT TO BE SPECIFIED AT 18" (457mm) O.C. AND VERTICAL REINFORCEMENT TO BE SPECIFIED AT MULTIPLES OF 8" (203mm) O.C. REFER TO NUDURA REINFORCEMENT PLACEMENT DETAILS.

This detail is for general informational purposes only. The project design professional determines, in its sole discretion, whether this detail or a functionally equivalent detail is best suited for the project with respect to any architecture, engineering, and design requirements, including any local building code requirements. If this document is not reviewed and the product is not approved for use by a licensed design professional, the customer agrees that the detail may contain substantive flaws requiring correction, and hereby releases Tremco CPG Inc. from any and all liability related to the design and installation of the product. This detail is subject to change without notice. Contact Tremco to ensure you have the most recent version.

Non-Combustible Construction - Demising Wall Roof Connections



Nudura Technical Support: 866-468-6299
International: +1 705-726-9499

Detail: Nudura 10" (254mm) Form Unit, ICRS Connection, ICRS Resting on Form, Non-Bearing Demising Wall

Drawn by: KS

Checked by: KS

Scale: 1:8

Revision #: 01

Revised by: KAB

Date: 3/13/2024

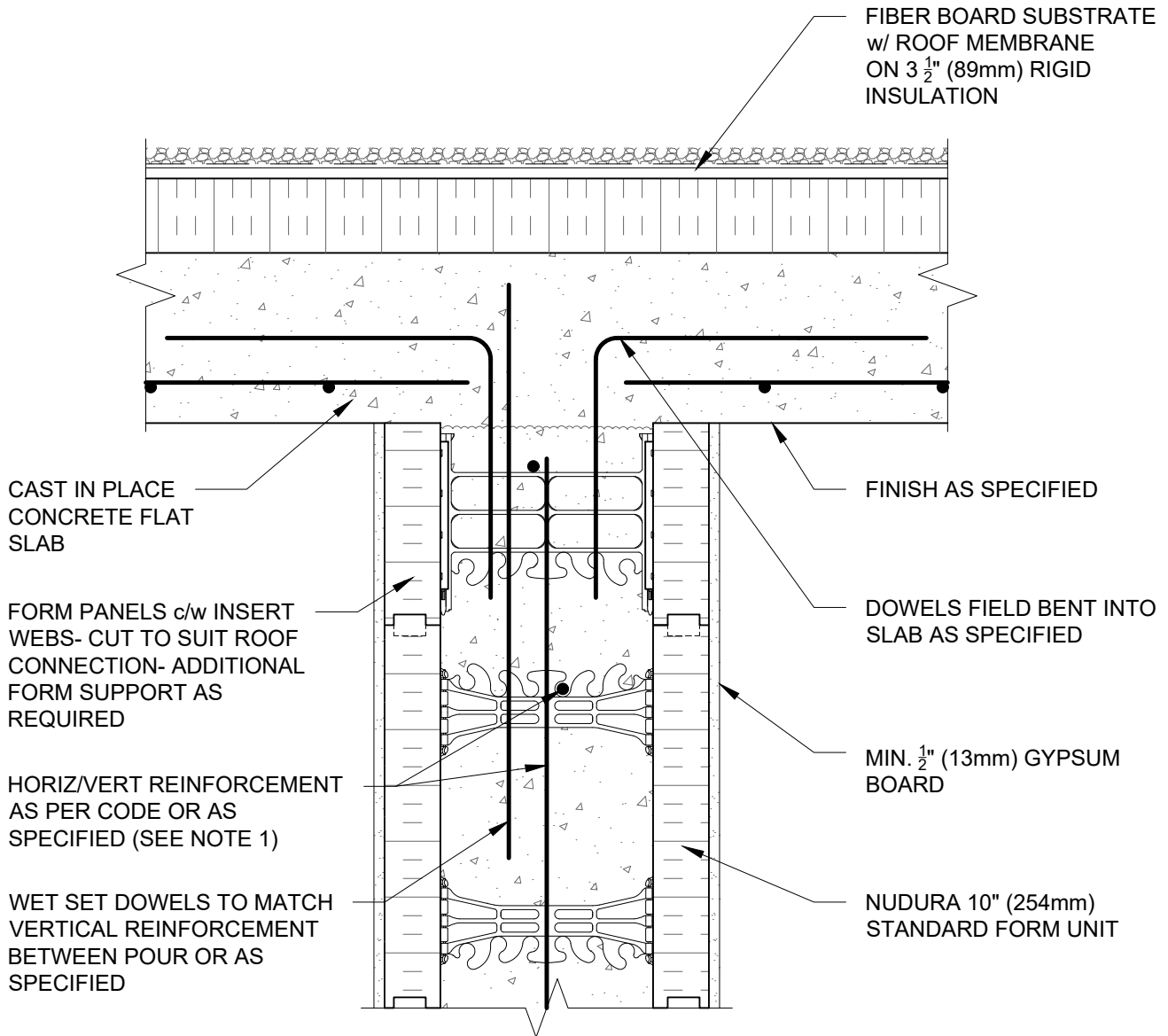
File Name:

G10D04



Construction Products Group

www.tremcocpg.com



NOTES:

1) FOR OPTIMAL REINFORCEMENT PLACEMENT IN THE NUDURA FORM, SPACING OF HORIZONTAL REINFORCEMENT TO BE SPECIFIED AT 18" (457mm) O.C. AND VERTICAL REINFORCEMENT TO BE SPECIFIED AT MULTIPLES OF 8" (203mm) O.C. REFER TO NUDURA REINFORCEMENT PLACEMENT DETAILS.

This detail is for general informational purposes only. The project design professional determines, in its sole discretion, whether this detail or a functionally equivalent detail is best suited for the project with respect to any architecture, engineering, and design requirements, including any local building code requirements. If this document is not reviewed and the product is not approved for use by a licensed design professional, the customer agrees that the detail may contain substantive flaws requiring correction, and hereby releases Tremco CPG Inc. from any and all liability related to the design and installation of the product. This detail is subject to change without notice. Contact Tremco to ensure you have the most recent version.

Non-Combustible Construction - Demising Wall Roof Connections



Nudura Technical Support: 866-468-6299
International: +1 705-726-9499

Detail: Nudura 10" (254mm) Form Unit, Concrete Flat Place, Bearing Demising Roof

Drawn by: KS

Checked by: KS

Scale: 1:8

Revision #: 01

Revised by: KAB

Date: 3/13/2024

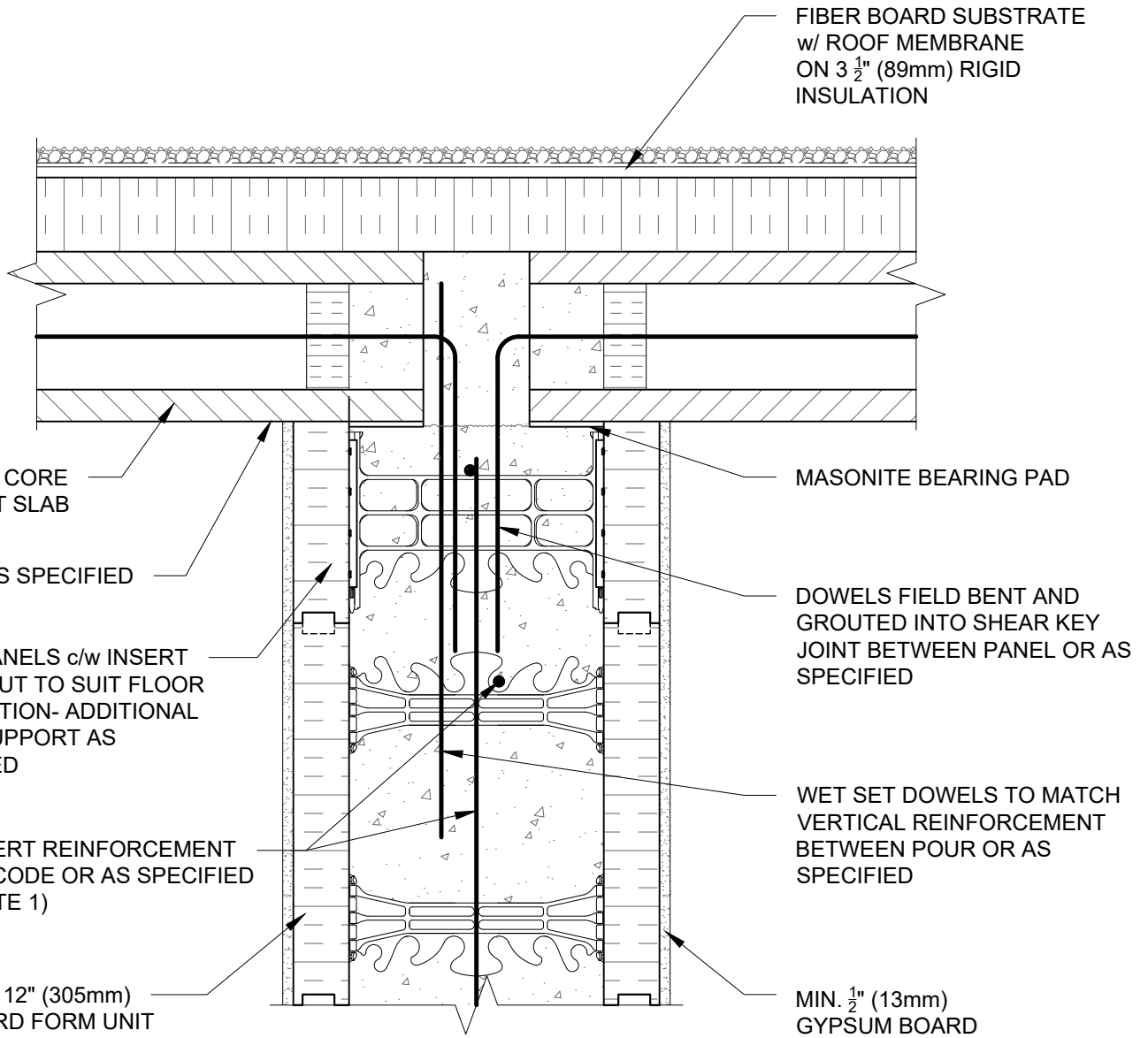
File Name:

G10E02



Construction Products Group



www.tremcocpg.com

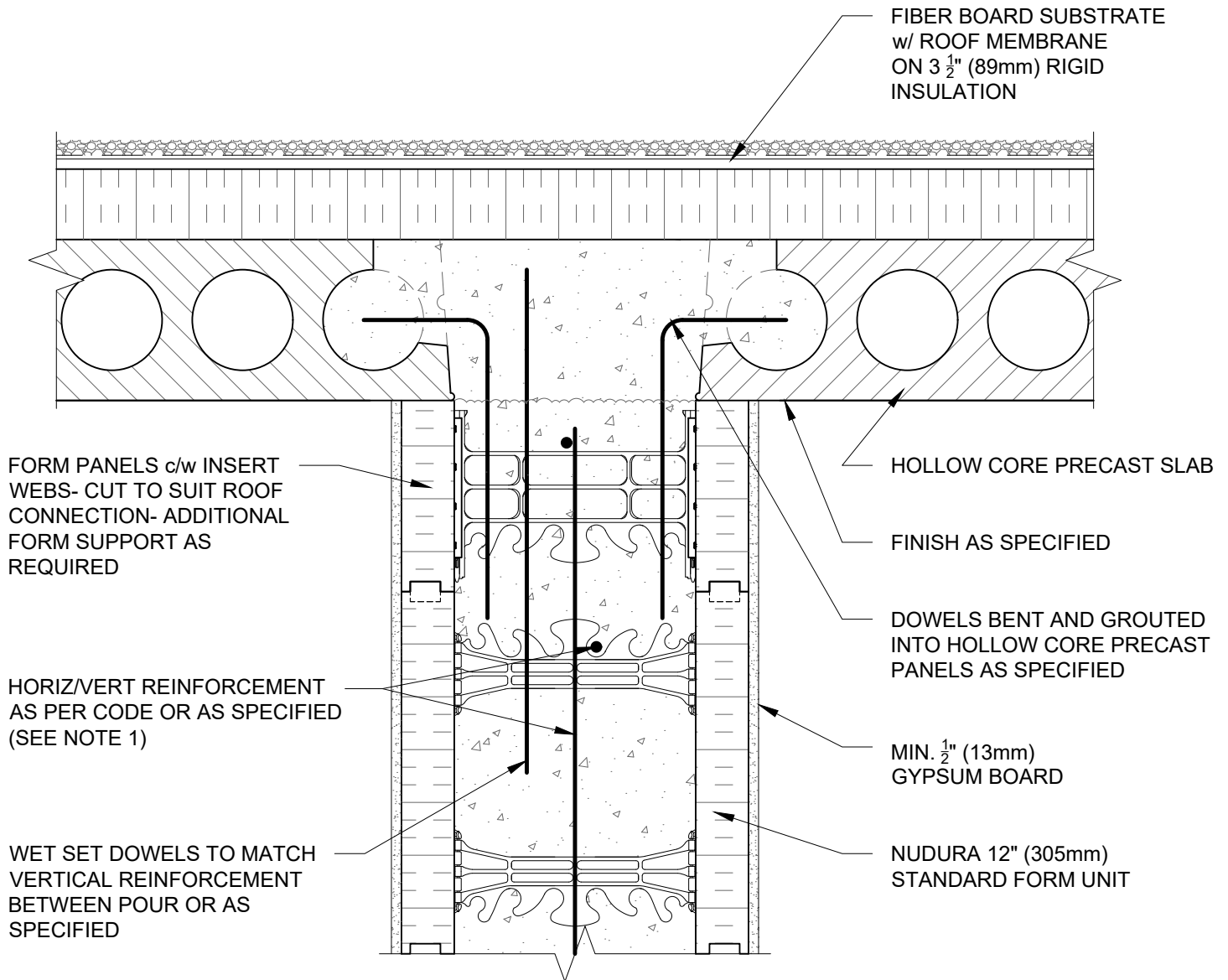


NOTES:

1) FOR OPTIMAL REINFORCEMENT PLACEMENT IN THE NUDURA FORM, SPACING OF HORIZONTAL REINFORCEMENT TO BE SPECIFIED AT 18" (457mm) O.C. AND VERTICAL REINFORCEMENT TO BE SPECIFIED AT MULTIPLES OF 8" (203mm) O.C. REFER TO NUDURA REINFORCEMENT PLACEMENT DETAILS.

This detail is for general informational purposes only. The project design professional determines, in its sole discretion, whether this detail or a functionally equivalent detail is best suited for the project with respect to any architecture, engineering, and design requirements, including any local building code requirements. If this document is not reviewed and the product is not approved for use by a licensed design professional, the customer agrees that the detail may contain substantive flaws requiring correction, and hereby releases Tremco CPG Inc. from any and all liability related to the design and installation of the product. This detail is subject to change without notice. Contact Tremco to ensure you have the most recent version.

Non-Combustible Construction - Demising Wall Roof Connections					
 Nudura Technical Support: 866-468-6299 International: +1 705-726-9499	Detail: Nudura 12" (305mm) Form Unit, Hollow Core Precast Roof, Bearing Demising Wall			File Name: G12A03	 Construction Products Group
	Drawn by: KS	Checked by: KS	Scale: 1:8		
	Revision #: 01	Revised by: KAB	Date: 3/13/2024		
	www.tremcocpg.com				



NOTES:

1) FOR OPTIMAL REINFORCEMENT PLACEMENT IN THE NUDURA FORM, SPACING OF HORIZONTAL REINFORCEMENT TO BE SPECIFIED AT 18" (457mm) O.C. AND VERTICAL REINFORCEMENT TO BE SPECIFIED AT MULTIPLES OF 8" (203mm) O.C. REFER TO NUDURA REINFORCEMENT PLACEMENT DETAILS.

This detail is for general informational purposes only. The project design professional determines, in its sole discretion, whether this detail or a functionally equivalent detail is best suited for the project with respect to any architecture, engineering, and design requirements, including any local building code requirements. If this document is not reviewed and the product is not approved for use by a licensed design professional, the customer agrees that the detail may contain substantive flaws requiring correction, and hereby releases Tremco CPG Inc. from any and all liability related to the design and installation of the product. This detail is subject to change without notice. Contact Tremco to ensure you have the most recent version.

Non-Combustible Construction - Demising Wall Roof Connections

Detail: Nudura 12" (305mm) Form Unit, Hollow Core Precast Roof,
Non-Bearing Demising Wall

File Name:

Drawn by: KS

Checked by: KS

Scale: 1:8

G12A04

Revision #: 01

Revised by: KAB

Date: 3/13/2024

www.tremcpcg.com



Nudura Technical Support: 866-468-6299
International: +1 705-726-9499



Construction Products Group

ALLOW FLOOR SLAB TO
REST ON TO BEARING
WALL CONCRETE

PROPRIETARY STEEL JOIST AND
CONNECTION SHOWN BEYOND
TO ALLOW FOR STAGGERING OF
THE JOISTS

FIBER BOARD SUBSTRATE
w/ ROOF MEMBRANE
ON 3 1/2" (89mm) RIGID
INSULATION

EPS FOAM REMOVED AT
JOIST LOCATIONS ONLY TO
ALLOW JOIST PLACEMENT

PROPRIETARY STEEL
JOIST ROOF SYSTEM

PROPRIETARY STEEL
JOIST ROOF SYSTEM

FORM PANELS c/w INSERT
WEBS- CUT TO SUIT FLOOR
CONNECTION- ADDITIONAL
FORM SUPPORT AS
REQUIRED

HORIZ/VERT REINFORCEMENT
AS PER CODE OR AS
SPECIFIED (SEE NOTE 1)

WET SET DOWELS TO MATCH
VERTICAL REINFORCEMENT
BETWEEN POUR OR AS
SPECIFIED

CEILING FINISH AS PER STEEL JOIST
MANUFACTURERS SPECIFICATION
(SEE NOTE 2)

NUDURA 12" (305mm)
STANDARD FORM UNIT

MIN. 1/2" (13mm) GYPSUM BOARD

NOTES:

1) FOR OPTIMAL REINFORCEMENT PLACEMENT IN THE NUDURA FORM,
SPACING OF HORIZONTAL REINFORCEMENT TO BE SPECIFIED AT 18"
(457mm) O.C. AND VERTICAL REINFORCEMENT TO BE SPECIFIED AT
MULTIPLES OF 8" (203mm) O.C. REFER TO NUDURA REINFORCEMENT
PLACEMENT DETAILS.

2) WHERE GYPSUM BOARD IS REQUIRED TO COMPLETE FIRE RATED
ASSEMBLY, EPS FOAM KERF CUT TO ENABLE CEILING FINISH TO
PROVIDE THERMAL BARRIER CONTACT TO CONCRETE.

This detail is for general informational purposes only. The project design professional determines, in its sole discretion, whether this detail or a functionally equivalent detail is best suited for the project with respect to any architecture, engineering, and design requirements, including any local building code requirements. If this document is not reviewed and the product is not approved for use by a licensed design professional, the customer agrees that the detail may contain substantive flaws requiring correction, and hereby releases Tremco CPG Inc. from any and all liability related to the design and installation of the product. This detail is subject to change without notice. Contact Tremco to ensure you have the most recent version.

Non-Combustible Construction - Demising Wall Roof Connections



Nudura Technical Support: 866-468-6299
International: +1 705-726-9499

Detail: Nudura 12" (305mm) Form Unit, Steel Joist Roof System,
Bearing Demising Wall

Drawn by: KS

Checked by: KS

Scale: 1:8

Revision #: 01

Revised by: KAB

Date: 3/13/2024

File Name:

G12B03



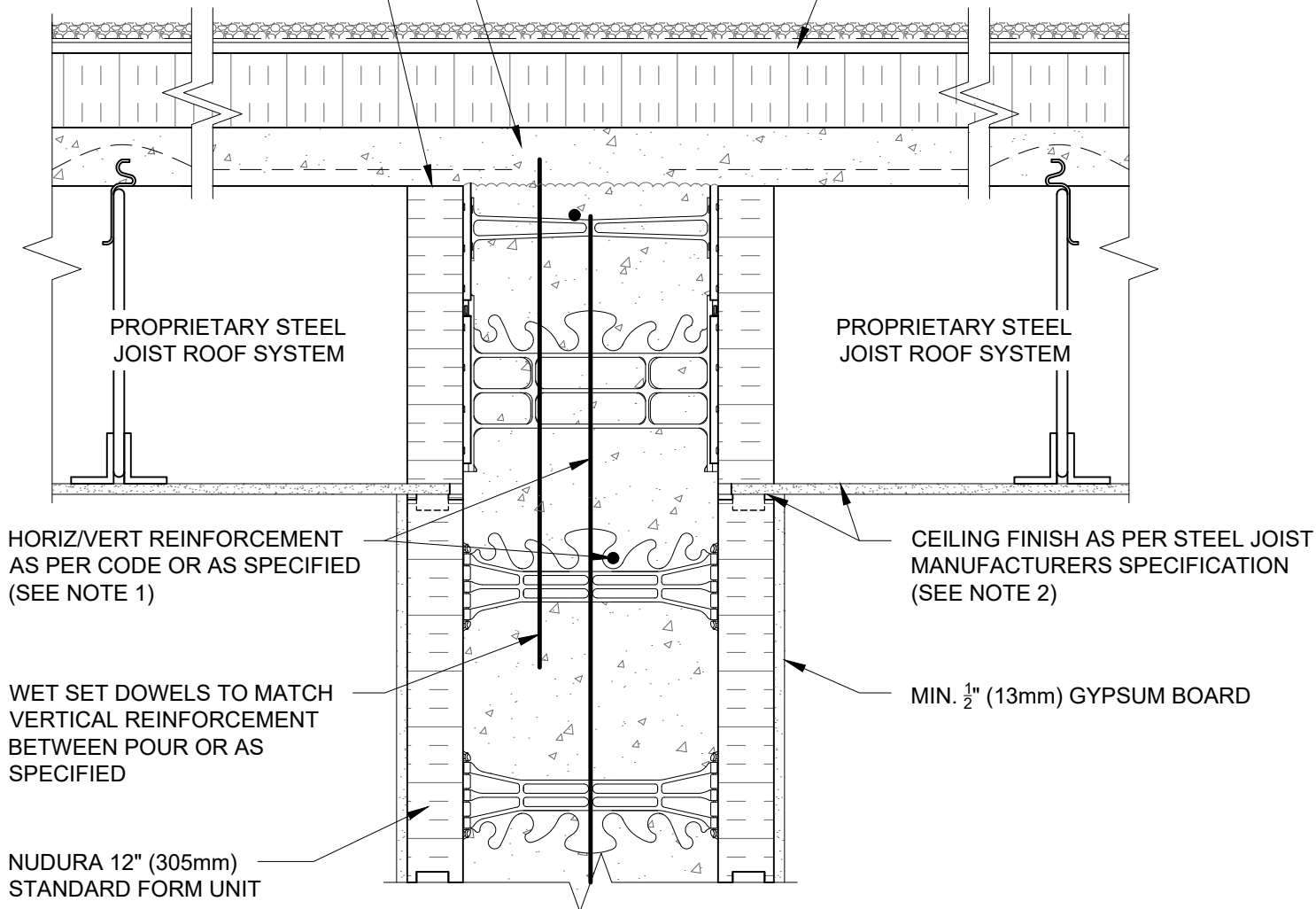
Construction Products Group

www.tremcocpg.com

ALLOW ROOF SLAB TO
REST ON TO BEARING
WALL CONCRETE

FORM PANELS c/w INSERT
WEBS- CUT TO SUIT ROOF
CONNECTION- ADDITIONAL
FORM SUPPORT AS
REQUIRED

FIBER BOARD SUBSTRATE
w/ ROOF MEMBRANE
ON 3 1/2" (89mm) RIGID
INSULATION



NOTES:

1) FOR OPTIMAL REINFORCEMENT PLACEMENT IN THE NUDURA FORM, SPACING OF HORIZONTAL REINFORCEMENT TO BE SPECIFIED AT 18" (457mm) O.C. AND VERTICAL REINFORCEMENT TO BE SPECIFIED AT MULTIPLES OF 8" (203mm) O.C. REFER TO NUDURA REINFORCEMENT PLACEMENT DETAILS.

2) WHERE GYPSUM BOARD IS REQUIRED TO COMPLETE FIRE RATED ASSEMBLY, EPS FOAM KERF CUT TO ENABLE CEILING FINISH TO PROVIDE THERMAL BARRIER CONTACT TO CONCRETE.

This detail is for general informational purposes only. The project design professional determines, in its sole discretion, whether this detail or a functionally equivalent detail is best suited for the project with respect to any architecture, engineering, and design requirements, including any local building code requirements. If this document is not reviewed and the product is not approved for use by a licensed design professional, the customer agrees that the detail may contain substantive flaws requiring correction, and hereby releases Tremco CPG Inc. from any and all liability related to the design and installation of the product. This detail is subject to change without notice. Contact Tremco to ensure you have the most recent version.

Non-Combustible Construction - Demising Wall Roof Connections



Nudura Technical Support: 866-468-6299
International: +1 705-726-9499

Detail: Nudura 12" (305mm) Form Unit, Steel Joist Roof System,
Non-Bearing Demising Wall

Drawn by: KS

Checked by: KS

Scale: 1:8

Revision #: 01

Revised by: KAB

Date: 3/13/2024

File Name:

G12B04



Construction Products Group

www.tremcocpg.com

HEIGHT OF PARAPET TO BE DETERMINED BY ENGINEERING DESIGN

MIN. $\frac{5}{8}$ " (16mm) CEMENT BOARD PANELS TO BE INSTALLED PREPOUR AS FORM PANEL FOR CONCRETE CAP AT TOP OF WALL INSTALLED ON SLOPE TO MATCH ROOF PITCH

CONTINUOUS STEEL ANGLE AS SPECIFIED

GYPSUM BOARD FINISHED/FIRE STOP INSTALLED AT JOISTS AS PER CODE

U BRACKET ANCHOR INSERT

WET SET DOWELS TO MATCH VERTICAL REINFORCEMENT BETWEEN POUR OR AS SPECIFIED

HORIZ/VERT REINFORCEMENT AS PER CODE OR AS SPECIFIED (SEE NOTE 1)

CAP FLASHING CLIPPED TO COUNTER FLASHING

EXOAIR 110AT OR FUNCTIONAL EQUIVALENT 3" (76 mm) MIN. ON CONCRETE CAP (BOTH SIDES)

ADDITIONAL FORM SUPPORT AT CEMENT BOARD PANELS AS REQUIRED

MINIMUM 6" (152mm) THICK CONTINUOUS CONCRETE CAP AT TOP OF WALL POURED INTEGRAL WITH FIREWALL OR AS PER LOCAL CODE

EPS CANT STRIP

FIBER BOARD SUBSTRATE w/ ROOF MEMBRANE ON 3 $\frac{1}{2}$ " (89mm) RIGID INSULATION

COMPOSITE STEEL ROOF DECK

OWSJ

INTERIOR INSULATION REMOVED AT JOIST LOCATIONS

MIN. $\frac{1}{2}$ " (13mm) GYPSUM BOARD

NUDURA 12" (305mm) STANDARD FORM UNIT

NOTES:

1) FOR OPTIMAL REINFORCEMENT PLACEMENT IN THE NUDURA FORM, SPACING OF HORIZONTAL REINFORCEMENT TO BE SPECIFIED AT 18" (457mm) O.C. AND VERTICAL REINFORCEMENT TO BE SPECIFIED AT MULTIPLES OF 8" (203mm) O.C. REFER TO NUDURA REINFORCEMENT PLACEMENT DETAILS.

This detail is for general informational purposes only. The project design professional determines, in its sole discretion, whether this detail or a functionally equivalent detail is best suited for the project with respect to any architecture, engineering, and design requirements, including any local building code requirements. If this document is not reviewed and the product is not approved for use by a licensed design professional, the customer agrees that the detail may contain substantive flaws requiring correction, and hereby releases Tremco CPG Inc. from any and all liability related to the design and installation of the product. This detail is subject to change without notice. Contact Tremco to ensure you have the most recent version.

Non-Combustible Construction - Demising Wall Roof Connections



Nudura Technical Support: 866-468-6299
International: +1 705-726-9499

Detail: Nudura 12" (305mm) Form Unit, Steel Joist Roof, Bearing Demising Wall

Drawn by: KS

Checked by: KS

Scale: 1:8

Revision #: 01

Revised by: KAB

Date: 3/13/2024

File Name:

G12C03



Construction Products Group

www.tremcocpg.com

HEIGHT OF PARAPET TO BE DETERMINED BY ENGINEERING DESIGN

MIN. $\frac{5}{8}$ " (16mm) CEMENT BOARD PANELS TO BE INSTALLED PREPOUR AS FORM PANEL FOR CONCRETE CAP AT TOP OF WALL INSTALLED ON SLOPE TO MATCH ROOF PITCH

COMPOSITE STEEL DECK

COMPOSITE STEEL DECK WELDED TO SUPPORT ANCHORS AS SPECIFIED

HORIZ/VERT REINFORCEMENT AS PER CODE OR AS SPECIFIED (SEE NOTE 1)

WET SET DOWELS TO MATCH VERTICAL REINFORCEMENT BETWEEN POUR OR AS SPECIFIED

PROVIDE 4"x4" (100mmx100mm) FORM CUT OUT AT BRIDGING LOCATIONS

NUDURA 12" (305mm) STANDARD FORM UNIT

CAP FLASHING CLIPPED TO COUNTER FLASHING

EXOAIR 110AT OR FUNCTIONAL EQUIVALENT 3" (76 mm) MIN. ON CONCRETE CAP (BOTH SIDES)

ADDITIONAL FORM SUPPORT AT CEMENT BOARD PANELS AS REQUIRED

MIN. 6" (152mm) THICK CONTINUOUS CONCRETE CAP AT TOP OF WALL POURED INTEGRAL WITH FIREWALL OR AS PER LOCAL CODE

EPS CANT STRIP

FIBER BOARD SUBSTRATE w/ ROOF MEMBRANE ON 3 $\frac{1}{2}$ " (89mm) RIGID INSULATION

INTERIOR INSULATION TO BE DISCONTINUOUS AT FLOOR LINES

OWSJ

MIN. $\frac{1}{32}$ " (0.8mm) x 2 $\frac{1}{2}$ " (63.5mm) GALVANIZED STEEL CHANNEL CAP TO PROVIDE THERMAL BARRIER PROTECTION

CLIP ANGLE ANCHORED TO WALL AT JOIST BRIDGING LOCATIONS

MIN. $\frac{1}{2}$ " (13mm) GYPSUM BOARD

NOTES:

1) FOR OPTIMAL REINFORCEMENT PLACEMENT IN THE NUDURA FORM, SPACING OF HORIZONTAL REINFORCEMENT TO BE SPECIFIED AT 18" (457mm) O.C. AND VERTICAL REINFORCEMENT TO BE SPECIFIED AT MULTIPLES OF 8" (203mm) O.C. REFER TO NUDURA REINFORCEMENT PLACEMENT DETAILS.

This detail is for general informational purposes only. The project design professional determines, in its sole discretion, whether this detail or a functionally equivalent detail is best suited for the project with respect to any architecture, engineering, and design requirements, including any local building code requirements. If this document is not reviewed and the product is not approved for use by a licensed design professional, the customer agrees that the detail may contain substantive flaws requiring correction, and hereby releases Tremco CPG Inc. from any and all liability related to the design and installation of the product. This detail is subject to change without notice. Contact Tremco to ensure you have the most recent version.

Non-Combustible Construction - Demising Wall Roof Connections



Nudura Technical Support: 866-468-6299
International: +1 705-726-9499

Detail: Nudura 12" (305mm) Form Unit, Steel Joist Roof, Non-Bearing Demising Wall

Drawn by: KS

Checked by: KS

Scale: 1:8

Revision #: 01

Revised by: KAB

Date: 3/13/2024

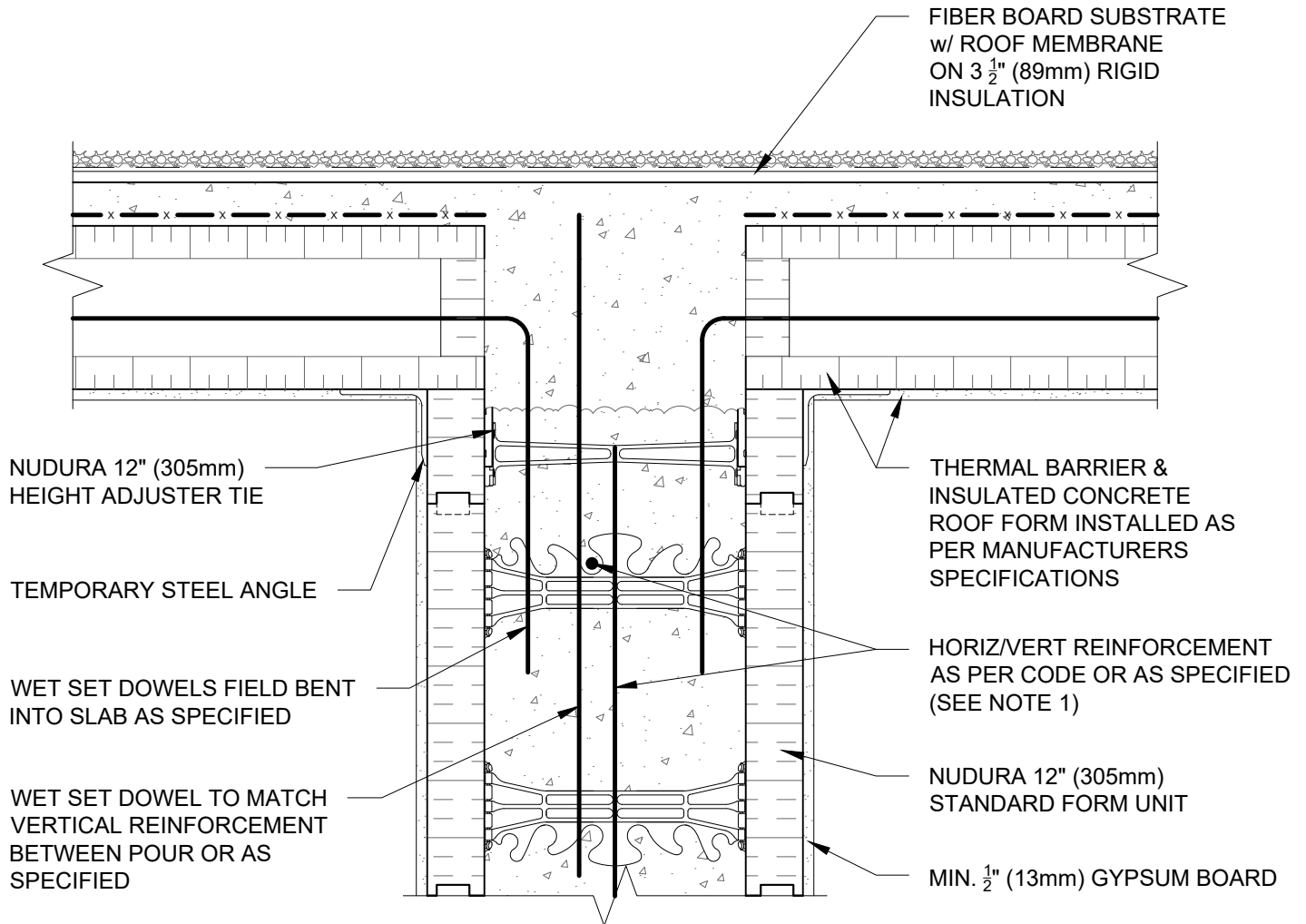
File Name:

G12C04



Construction Products Group

www.tremcocpg.com



NOTES:

1) FOR OPTIMAL REINFORCEMENT PLACEMENT IN THE NUDURA FORM, SPACING OF HORIZONTAL REINFORCEMENT TO BE SPECIFIED AT 18" (457mm) O.C. AND VERTICAL REINFORCEMENT TO BE SPECIFIED AT MULTIPLES OF 8" (203mm) O.C. REFER TO NUDURA REINFORCEMENT PLACEMENT DETAILS.

This detail is for general informational purposes only. The project design professional determines, in its sole discretion, whether this detail or a functionally equivalent detail is best suited for the project with respect to any architecture, engineering, and design requirements, including any local building code requirements. If this document is not reviewed and the product is not approved for use by a licensed design professional, the customer agrees that the detail may contain substantive flaws requiring correction, and hereby releases Tremco CPG Inc. from any and all liability related to the design and installation of the product. This detail is subject to change without notice. Contact Tremco to ensure you have the most recent version.

Non-Combustible Construction - Demising Wall Roof Connections



Nudura Technical Support: 866-468-6299
International: +1 705-726-9499

Detail: Nudura 12" (305mm) Form Unit, ICRS Connection, ICRS Resting on Form, Bearing Demising Wall

Drawn by: KS

Checked by: KS

Scale: 1:8

Revision #: 01

Revised by: KAB

Date: 3/13/2024

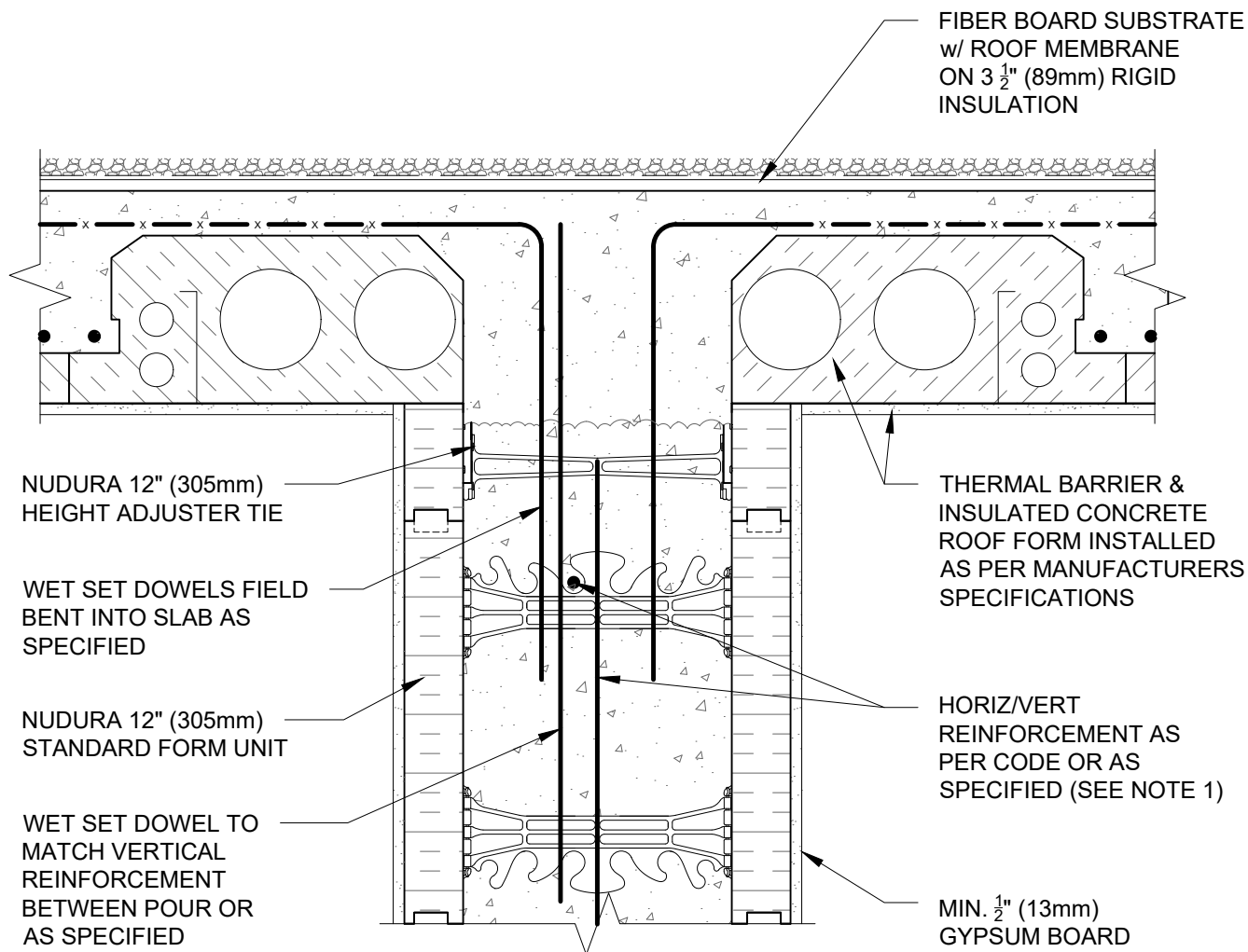
File Name:

G12D03



Construction Products Group

www.tremcocpg.com

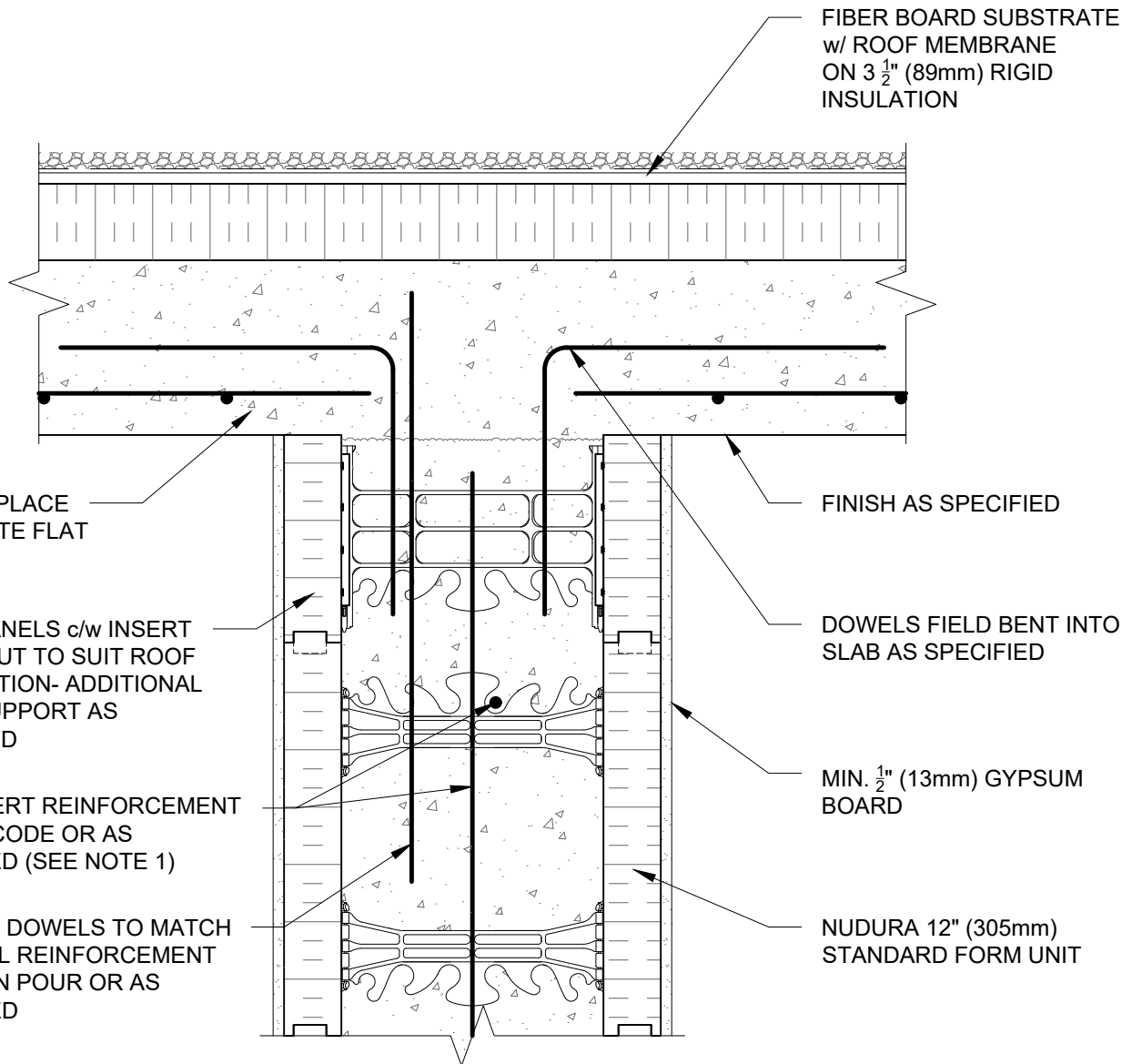


NOTES:

1) FOR OPTIMAL REINFORCEMENT PLACEMENT IN THE NUDURA FORM, SPACING OF HORIZONTAL REINFORCEMENT TO BE SPECIFIED AT 18" (457mm) O.C. AND VERTICAL REINFORCEMENT TO BE SPECIFIED AT MULTIPLES OF 8" (203mm) O.C. REFER TO NUDURA REINFORCEMENT PLACEMENT DETAILS.

This detail is for general informational purposes only. The project design professional determines, in its sole discretion, whether this detail or a functionally equivalent detail is best suited for the project with respect to any architecture, engineering, and design requirements, including any local building code requirements. If this document is not reviewed and the product is not approved for use by a licensed design professional, the customer agrees that the detail may contain substantive flaws requiring correction, and hereby releases Tremco CPG Inc. from any and all liability related to the design and installation of the product. This detail is subject to change without notice. Contact Tremco to ensure you have the most recent version.

Non-Combustible Construction - Demising Wall Roof Connections



NOTES:

1) FOR OPTIMAL REINFORCEMENT PLACEMENT IN THE NUDURA FORM, SPACING OF HORIZONTAL REINFORCEMENT TO BE SPECIFIED AT 18" (457mm) O.C. AND VERTICAL REINFORCEMENT TO BE SPECIFIED AT MULTIPLES OF 8" (203mm) O.C. REFER TO NUDURA REINFORCEMENT PLACEMENT DETAILS.

This detail is for general informational purposes only. The project design professional determines, in its sole discretion, whether this detail or a functionally equivalent detail is best suited for the project with respect to any architecture, engineering, and design requirements, including any local building code requirements. If this document is not reviewed and the product is not approved for use by a licensed design professional, the customer agrees that the detail may contain substantive flaws requiring correction, and hereby releases Tremco CPG Inc. from any and all liability related to the design and installation of the product. This detail is subject to change without notice. Contact Tremco to ensure you have the most recent version.

Non-Combustible Construction - Demising Wall Roof Connections



Nudura Technical Support: 866-468-6299
International: +1 705-726-9499

Detail: Nudura 12" (305mm) Form Unit, Concrete Flat Plate, Bearing Demising Roof

Drawn by: KS

Checked by: KS

Scale: 1:8

Revision #: 01

Revised by: KAB

Date: 3/13/2024

www.tremcocpg.com

File Name:

G12E02



Construction Products Group