

WET SET DOWELS TO MATCH  
VERTICAL REINFORCEMENT  
BETWEEN POUR OR AS  
SPECIFIED

MIN  $\frac{1}{2}$ " (13mm) GYPSUM BOARD

FINISHED CONCRETE  
TOPPING

HOLLOW CORE  
PRECAST SLAB

HOLLOW CORE  
PRECAST SLAB

FINISH AS SPECIFIED

FINISH AS SPECIFIED

FORM PANELS c/w INSERT  
WEBS- CUT TO SUIT FLOOR  
CONNECTION- ADDITIONAL  
FORM SUPPORT AS  
REQUIRED

MASONITE BEARING PAD

FIELD CUT TAPER TO PROVIDE  
ADDITIONAL CONCRETE  
BEARING SURFACE

HORIZ/VERT REINFORCEMENT  
AS PER CODE OR AS  
SPECIFIED (SEE NOTE 1)

DOWELS FIELD BENT AND  
GROUTED INTO SHEAR KEY  
JOINT BETWEEN PANELS AS  
SPECIFIED

NUDURA 6" (152mm)  
STANDARD FORM UNIT

MIN  $\frac{1}{2}$ " (13mm) GYPSUM BOARD

#### NOTES:

1) FOR OPTIMAL REINFORCEMENT PLACEMENT IN THE NUDURA FORM,  
SPACING OF HORIZONTAL REINFORCEMENT TO BE SPECIFIED AT 18"  
(457mm) O.C. AND VERTICAL REINFORCEMENT TO BE SPECIFIED AT  
MULTIPLES OF 8" (203mm) O.C. REFER TO NUDURA REINFORCEMENT  
PLACEMENT DETAILS.

This detail is for general informational purposes only. The project design professional determines, in its sole discretion, whether this detail or a functionally equivalent detail is best suited for the project with respect to any architecture, engineering, and design requirements, including any local building code requirements. If this document is not reviewed and the product is not approved for use by a licensed design professional, the customer agrees that the detail may contain substantive flaws requiring correction, and hereby releases Tremco CPG Inc. from any and all liability related to the design and installation of the product. This detail is subject to change without notice. Contact Tremco to ensure you have the most recent version.

#### Non-Combustible Construction - Demising Wall Intermediate Floor Connections



Nudura Technical Support: 866-468-6299  
International: +1 705-726-9499

Detail: Nudura 6" (152mm) Form Unit, Hollow Core Precast Slab,  
Bearing Demising Wall

Drawn by: KS

Checked by: KS

Scale: 1:8

Revision #: 01

Revised by: KAB

Date: 3/13/2024

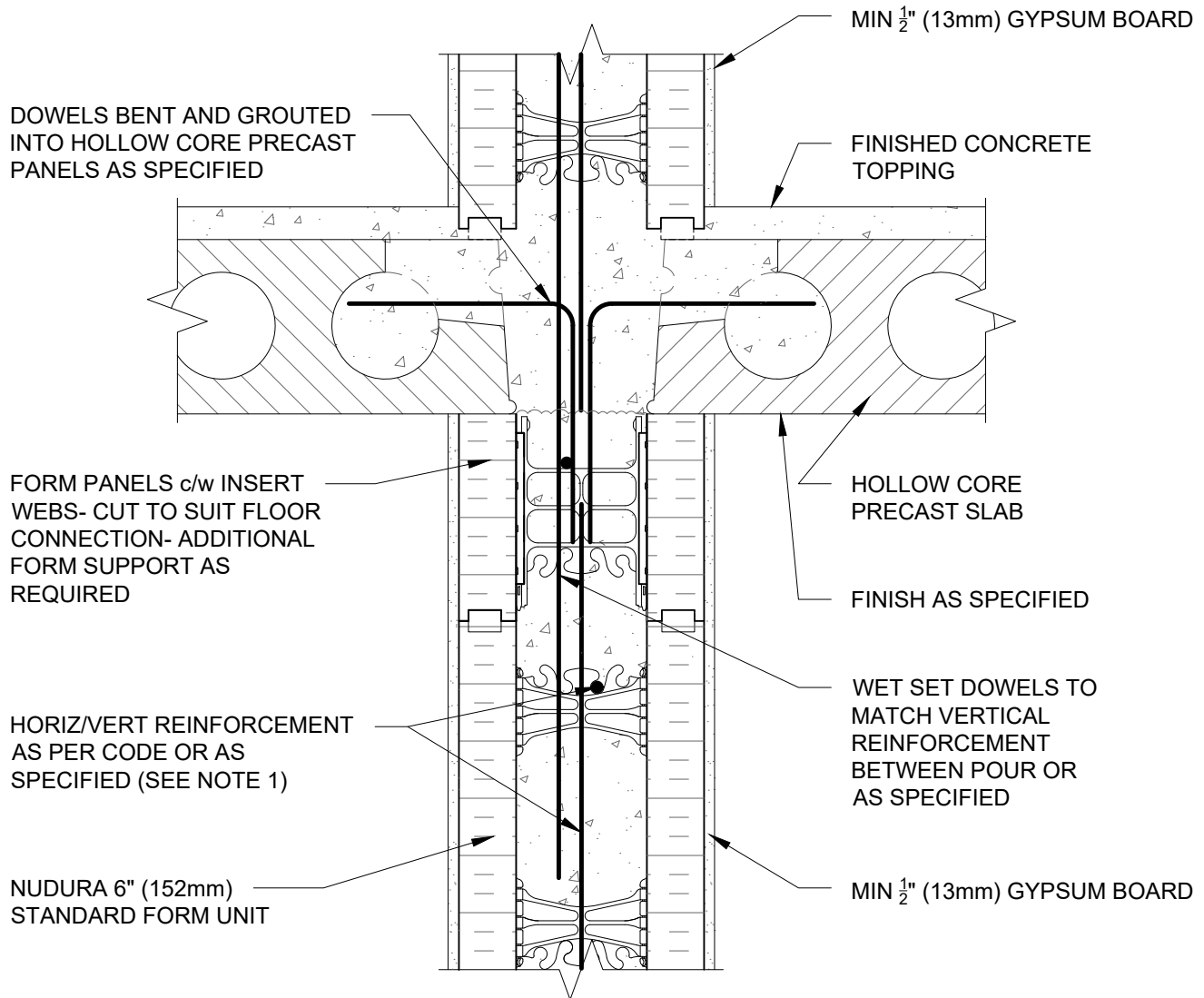
[www.tremcocpg.com](http://www.tremcocpg.com)

File Name:

G6A01



Construction Products Group



#### NOTES:

1) FOR OPTIMAL REINFORCEMENT PLACEMENT IN THE NUDURA FORM, SPACING OF HORIZONTAL REINFORCEMENT TO BE SPECIFIED AT 18" (457mm) O.C. AND VERTICAL REINFORCEMENT TO BE SPECIFIED AT MULTIPLES OF 8" (203mm) O.C. REFER TO NUDURA REINFORCEMENT PLACEMENT DETAILS.

*This detail is for general informational purposes only. The project design professional determines, in its sole discretion, whether this detail or a functionally equivalent detail is best suited for the project with respect to any architecture, engineering, and design requirements, including any local building code requirements. If this document is not reviewed and the product is not approved for use by a licensed design professional, the customer agrees that the detail may contain substantive flaws requiring correction, and hereby releases Tremco CPG Inc. from any and all liability related to the design and installation of the product. This detail is subject to change without notice. Contact Tremco to ensure you have the most recent version.*

#### Non-Combustible Construction - Demising Wall Intermediate Floor Connections



Nudura Technical Support: 866-468-6299  
International: +1 705-726-9499

Detail: Nudura 6" (152mm) Form Unit, Hollow Core Precast Slab,  
Non-Bearing Demising Wall

Drawn by: KS

Checked by: KS

Scale: 1:8

Revision #: 01

Revised by: KAB

Date: 3/13/2024

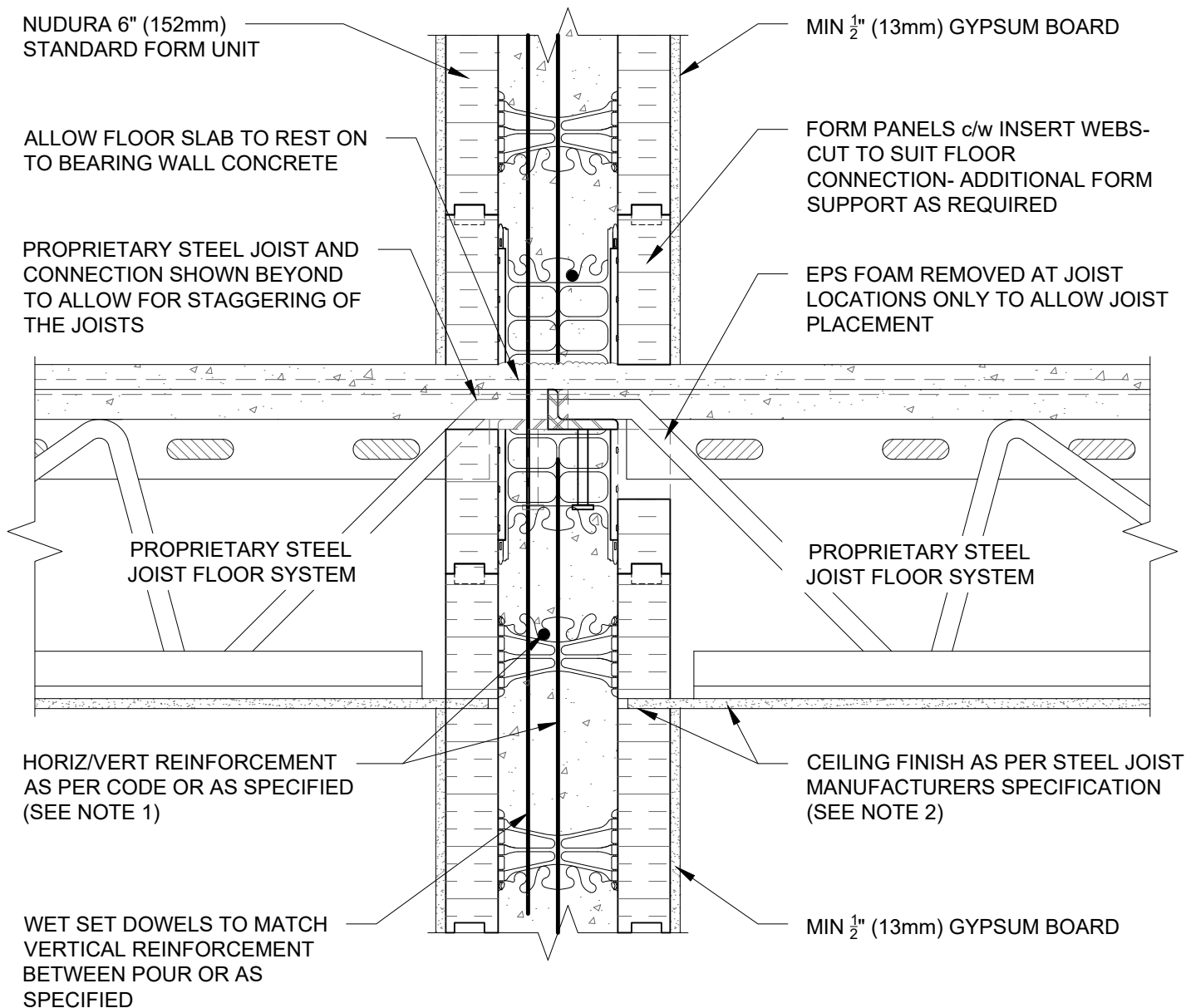
File Name:

G6A02



Construction Products Group

www.tremcocpg.com



**NOTES:**

1) FOR OPTIMAL REINFORCEMENT PLACEMENT IN THE NUDURA FORM, SPACING OF HORIZONTAL REINFORCEMENT TO BE SPECIFIED AT 18" (457mm) O.C. AND VERTICAL REINFORCEMENT TO BE SPECIFIED AT MULTIPLES OF 8" (203mm) O.C. REFER TO NUDURA REINFORCEMENT PLACEMENT DETAILS.

2) WHERE GYPSUM BOARD IS REQUIRED TO COMPLETE FIRE RATED ASSEMBLY, EPS FOAM KERF CUT TO ENABLE CEILING FINISH TO PROVIDE THERMAL BARRIER CONTACT TO CONCRETE.

*This detail is for general informational purposes only. The project design professional determines, in its sole discretion, whether this detail or a functionally equivalent detail is best suited for the project with respect to any architecture, engineering, and design requirements, including any local building code requirements. If this document is not reviewed and the product is not approved for use by a licensed design professional, the customer agrees that the detail may contain substantive flaws requiring correction, and hereby releases Tremco CPG Inc. from any and all liability related to the design and installation of the product. This detail is subject to change without notice. Contact Tremco to ensure you have the most recent version.*

**Non-Combustible Construction - Demising Wall Intermediate Floor Connections**



Nudura Technical Support: 866-468-6299  
International: +1 705-726-9499

Detail: Nudura 6" (152mm) Form Unit, Proprietary Steel Joist Floor System, Bearing Demising Wall

Drawn by: KS

Checked by: KS

Scale: 1:8

Revision #: 01

Revised by: KAB

Date: 3/13/2024

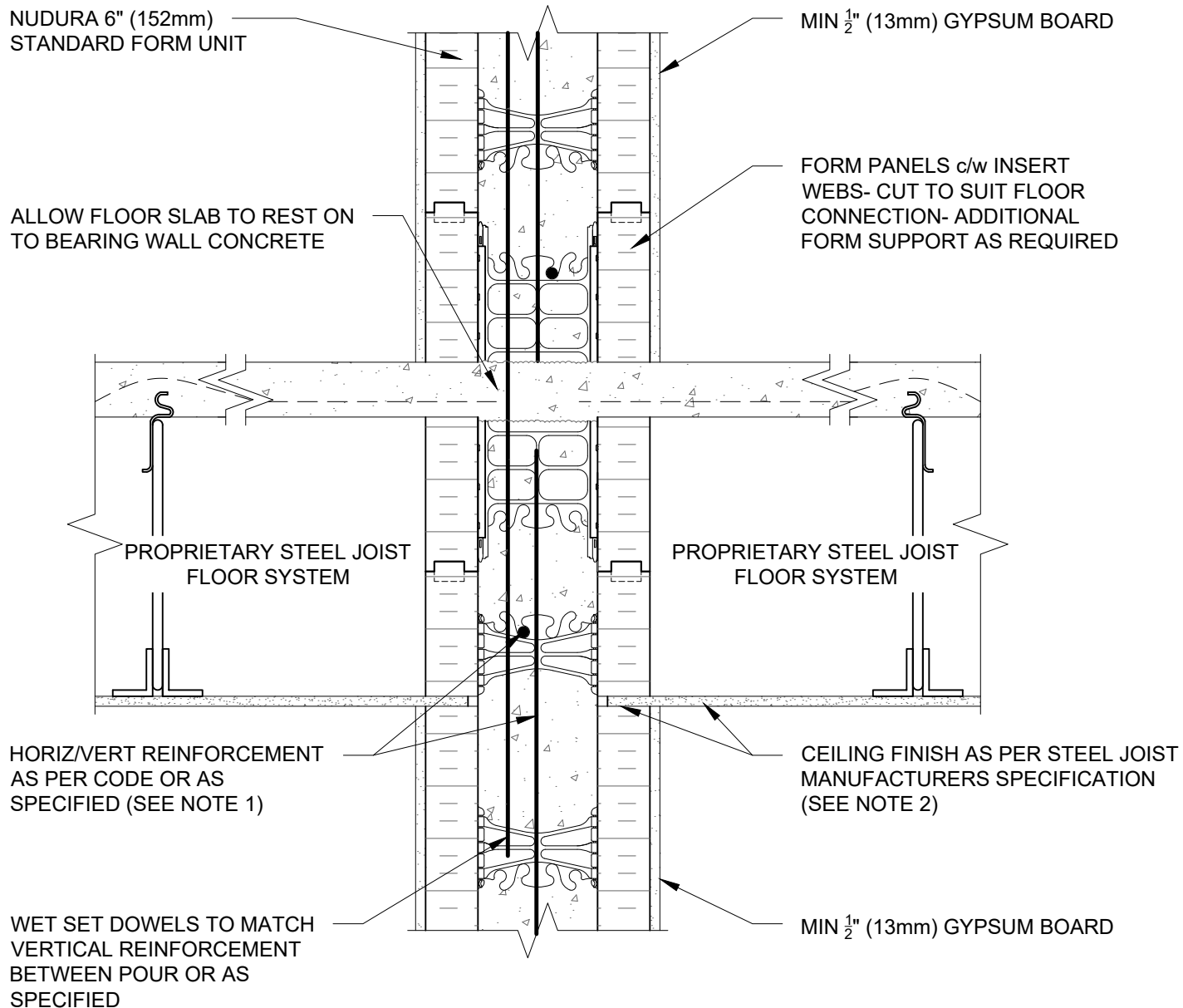
File Name:

G6B01



Construction Products Group

[www.tremcocpg.com](http://www.tremcocpg.com)



#### NOTES:

1) FOR OPTIMAL REINFORCEMENT PLACEMENT IN THE NUDURA FORM, SPACING OF HORIZONTAL REINFORCEMENT TO BE SPECIFIED AT 18" (457mm) O.C. AND VERTICAL REINFORCEMENT TO BE SPECIFIED AT MULTIPLES OF 8" (203mm) O.C. REFER TO NUDURA REINFORCEMENT PLACEMENT DETAILS.

2) WHERE GYPSUM BOARD IS REQUIRED TO COMPLETE FIRE RATED ASSEMBLY, EPS FOAM KERF CUT TO ENABLE CEILING FINISH TO PROVIDE THERMAL BARRIER CONTACT TO CONCRETE.

This detail is for general informational purposes only. The project design professional determines, in its sole discretion, whether this detail or a functionally equivalent detail is best suited for the project with respect to any architecture, engineering, and design requirements, including any local building code requirements. If this document is not reviewed and the product is not approved for use by a licensed design professional, the customer agrees that the detail may contain substantive flaws requiring correction, and hereby releases Tremco CPG Inc. from any and all liability related to the design and installation of the product. This detail is subject to change without notice. Contact Tremco to ensure you have the most recent version.

#### Non-Combustible Construction - Demising Wall Intermediate Floor Connections



Nudura Technical Support: 866-468-6299  
International: +1 705-726-9499

Detail: Nudura 6" (152mm) Form Unit, Proprietary Steel Joist Floor System,  
Non-Bearing Demising Wall

Drawn by: KS

Checked by: KS

Scale: 1:8

Revision #: 01

Revised by: KAB

Date: 3/13/2024

File Name:

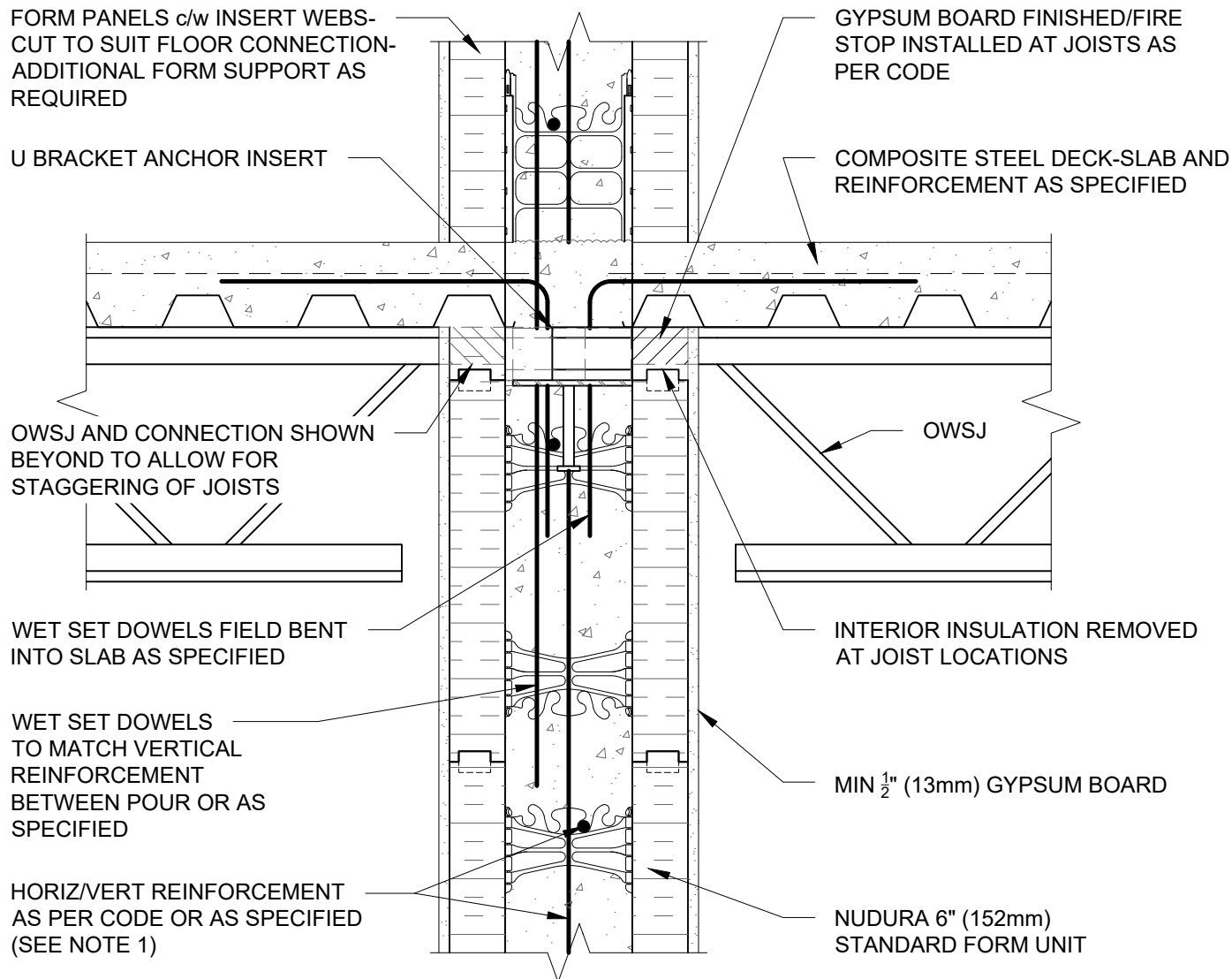
G6B02



Construction Products Group

[www.tremcocpg.com](http://www.tremcocpg.com)





#### NOTES:

1) FOR OPTIMAL REINFORCEMENT PLACEMENT IN THE NUDURA FORM, SPACING OF HORIZONTAL REINFORCEMENT TO BE SPECIFIED AT 18" (457mm) O.C. AND VERTICAL REINFORCEMENT TO BE SPECIFIED AT MULTIPLES OF 8" (203mm) O.C. REFER TO NUDURA REINFORCEMENT PLACEMENT DETAILS.

*This detail is for general informational purposes only. The project design professional determines, in its sole discretion, whether this detail or a functionally equivalent detail is best suited for the project with respect to any architecture, engineering, and design requirements, including any local building code requirements. If this document is not reviewed and the product is not approved for use by a licensed design professional, the customer agrees that the detail may contain substantive flaws requiring correction, and hereby releases Tremco CPG Inc. from any and all liability related to the design and installation of the product. This detail is subject to change without notice. Contact Tremco to ensure you have the most recent version.*

#### Non-Combustible Construction - Demising Wall Intermediate Floor Connections



Nudura Technical Support: 866-468-6299  
International: +1 705-726-9499

Detail: Nudura 6" (152mm) Form Unit, Composite Steel Deck-Slab, Steel Joists on Bearing Demising Wall

Drawn by: KS

Checked by: KS

Scale: 1:8

Revision #: 01

Revised by: KAB

Date: 3/13/2024

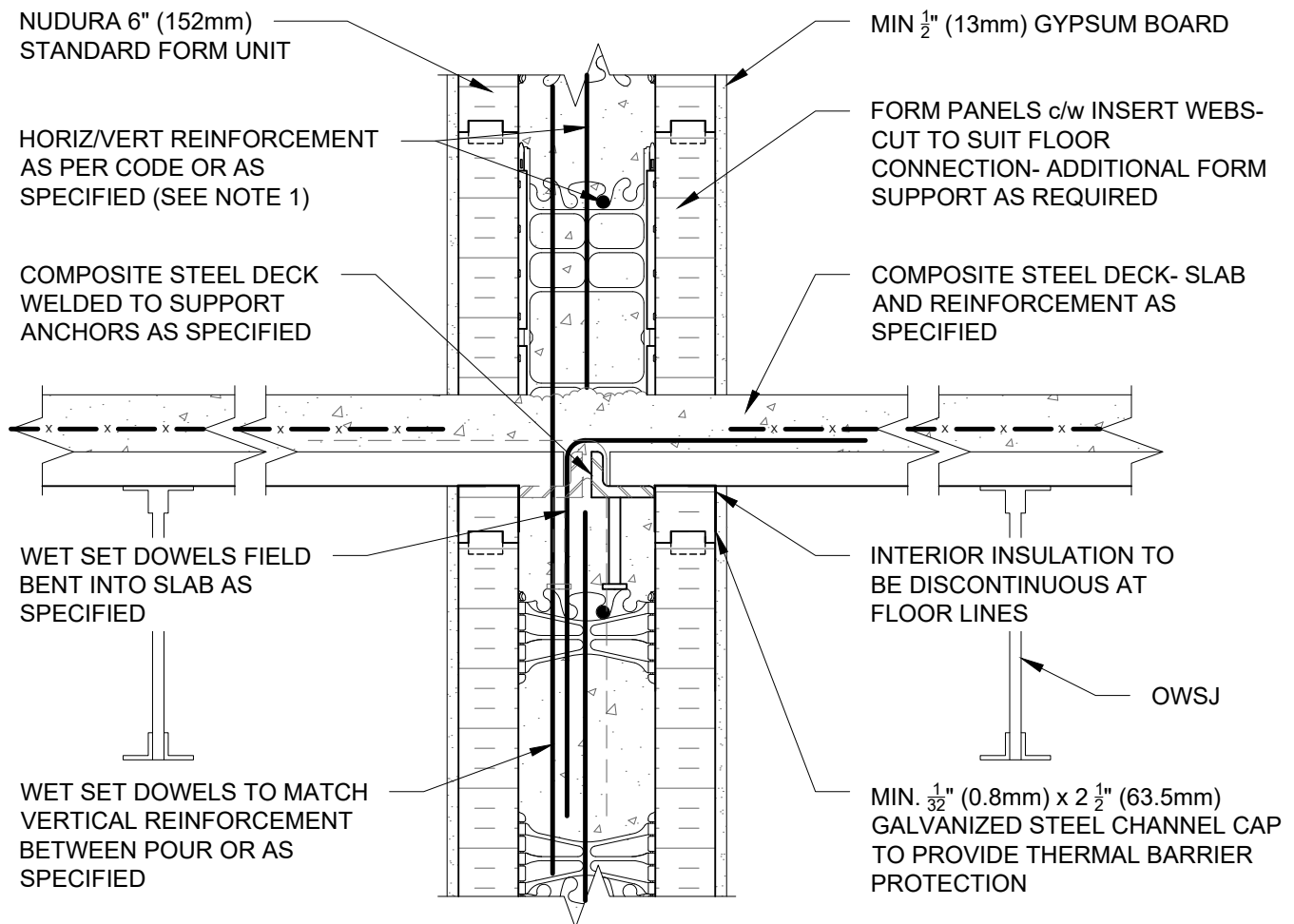
File Name:

G6C01



Construction Products Group

www.tremcocpg.com



#### NOTES:

1) FOR OPTIMAL REINFORCEMENT PLACEMENT IN THE NUDURA FORM, SPACING OF HORIZONTAL REINFORCEMENT TO BE SPECIFIED AT 18" (457mm) O.C. AND VERTICAL REINFORCEMENT TO BE SPECIFIED AT MULTIPLES OF 8" (203mm) O.C. REFER TO NUDURA REINFORCEMENT PLACEMENT DETAILS.

*This detail is for general informational purposes only. The project design professional determines, in its sole discretion, whether this detail or a functionally equivalent detail is best suited for the project with respect to any architecture, engineering, and design requirements, including any local building code requirements. If this document is not reviewed and the product is not approved for use by a licensed design professional, the customer agrees that the detail may contain substantive flaws requiring correction, and hereby releases Tremco CPG Inc. from any and all liability related to the design and installation of the product. This detail is subject to change without notice. Contact Tremco to ensure you have the most recent version.*

#### Non-Combustible Construction - Demising Wall Intermediate Floor Connections



Nudura Technical Support: 866-468-6299  
International: +1 705-726-9499

Detail: Nudura 6" (152mm) Form Unit, Composite Steel Deck-Slab, Steel Joists on Non-Bearing Demising Wall

Drawn by: KS

Checked by: KS

Scale: 1:8

Revision #: 01

Revised by: KAB

Date: 3/13/2024

[www.tremcocpg.com](http://www.tremcocpg.com)

File Name:

G6C02



Construction Products Group

NUDURA 6" (152mm)  
STANDARD FORM UNIT

MIN 1/2" (13mm) GYPSUM BOARD

HORIZ/VERT REINFORCEMENT  
AS PER CODE OR AS  
SPECIFIED (SEE NOTE 1)

INSULATED CONCRETE  
FLOOR FORM INSTALLED AS  
PER MANUFACTURERS  
SPECIFICATIONS

WET SET DOWELS FIELD  
BENT INTO SLAB AS  
SPECIFIED

THERMAL BARRIER AS PER  
FLOOR MANUFACTURERS  
SPECIFICATION

WET SET DOWELS TO MATCH  
VERTICAL REINFORCEMENT  
BETWEEN POUR OR AS  
SPECIFIED

TEMPORARY STEEL ANGLE

NUDURA 6" (152mm)  
HEIGHT ADJUSTER TIE

#### NOTES:

1) FOR OPTIMAL REINFORCEMENT PLACEMENT IN THE NUDURA FORM, SPACING OF HORIZONTAL REINFORCEMENT TO BE SPECIFIED AT 18" (457mm) O.C. AND VERTICAL REINFORCEMENT TO BE SPECIFIED AT MULTIPLES OF 8" (203mm) O.C. REFER TO NUDURA REINFORCEMENT PLACEMENT DETAILS.

This detail is for general informational purposes only. The project design professional determines, in its sole discretion, whether this detail or a functionally equivalent detail is best suited for the project with respect to any architecture, engineering, and design requirements, including any local building code requirements. If this document is not reviewed and the product is not approved for use by a licensed design professional, the customer agrees that the detail may contain substantive flaws requiring correction, and hereby releases Tremco CPG Inc. from any and all liability related to the design and installation of the product. This detail is subject to change without notice. Contact Tremco to ensure you have the most recent version.

#### Non-Combustible Construction - Demising Wall Intermediate Floor Connections



Nudura Technical Support: 866-468-6299  
International: +1 705-726-9499

Detail: Nudura 6" (152mm) Form Unit, ICFS Connection, ICFS Resting on Form, Bearing Demising Wall

Drawn by: KS

Checked by: KS

Scale: 1:8

Revision #: 01

Revised by: KAB

Date: 3/13/2024

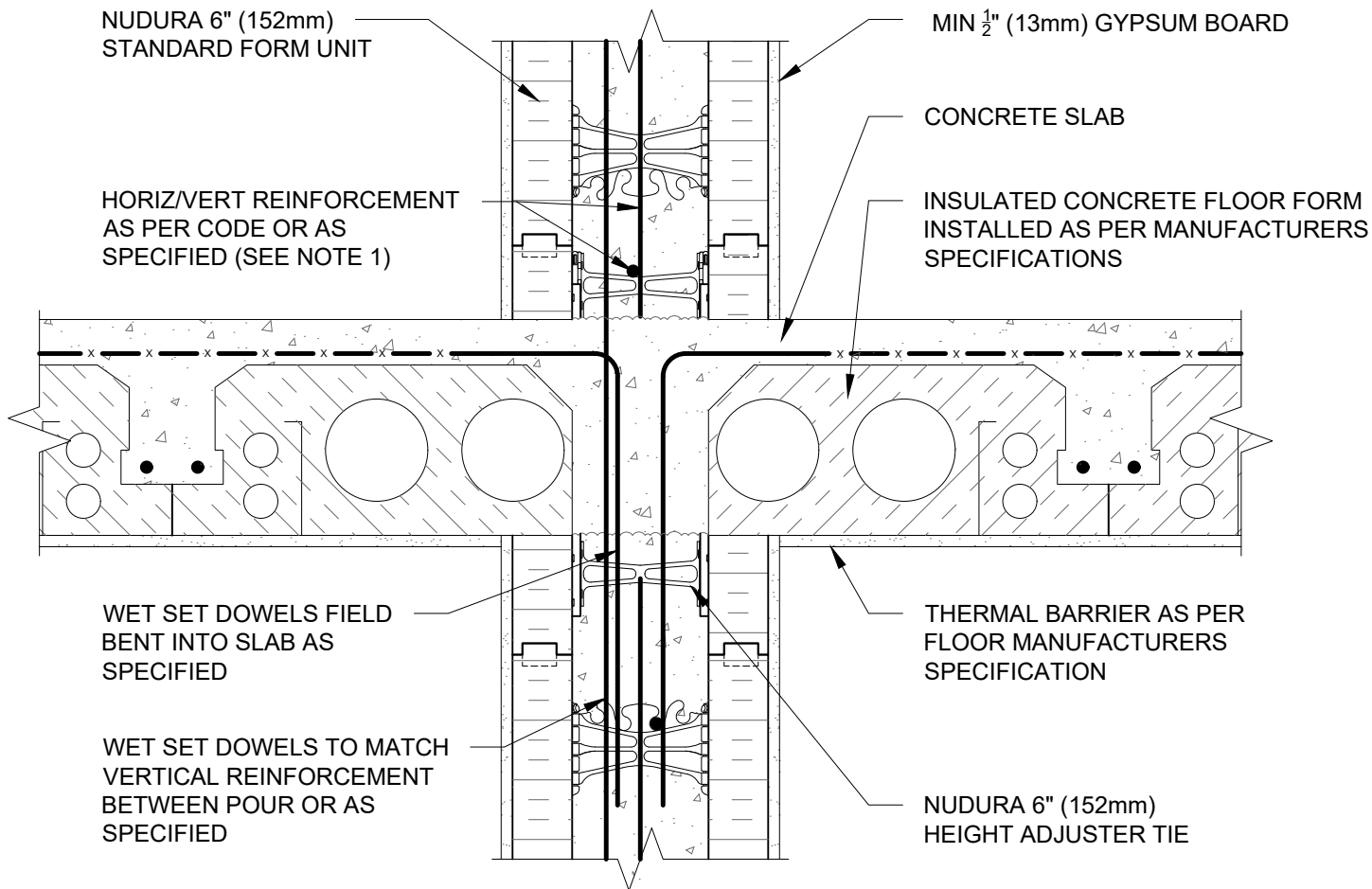
File Name:

G6D01



Construction Products Group

[www.tremcocpg.com](http://www.tremcocpg.com)



**NOTES:**

1) FOR OPTIMAL REINFORCEMENT PLACEMENT IN THE NUDURA FORM, SPACING OF HORIZONTAL REINFORCEMENT TO BE SPECIFIED AT 18" (457mm) O.C. AND VERTICAL REINFORCEMENT TO BE SPECIFIED AT MULTIPLES OF 8" (203mm) O.C. REFER TO NUDURA REINFORCEMENT PLACEMENT DETAILS.

*This detail is for general informational purposes only. The project design professional determines, in its sole discretion, whether this detail or a functionally equivalent detail is best suited for the project with respect to any architecture, engineering, and design requirements, including any local building code requirements. If this document is not reviewed and the product is not approved for use by a licensed design professional, the customer agrees that the detail may contain substantive flaws requiring correction, and hereby releases Tremco CPG Inc. from any and all liability related to the design and installation of the product. This detail is subject to change without notice. Contact Tremco to ensure you have the most recent version.*

**Non-Combustible Construction - Demising Wall Intermediate Floor Connections**



Nudura Technical Support: 866-468-6299  
International: +1 705-726-9499

Detail: Nudura 6" (152mm) Form Unit, ICFS Connection, ICFS Resting on Form, Non-Bearing Demising Wall

Drawn by: KS

Checked by: KS

Scale: 1:8

Revision #: 01

Revised by: KAB

Date: 3/13/2024

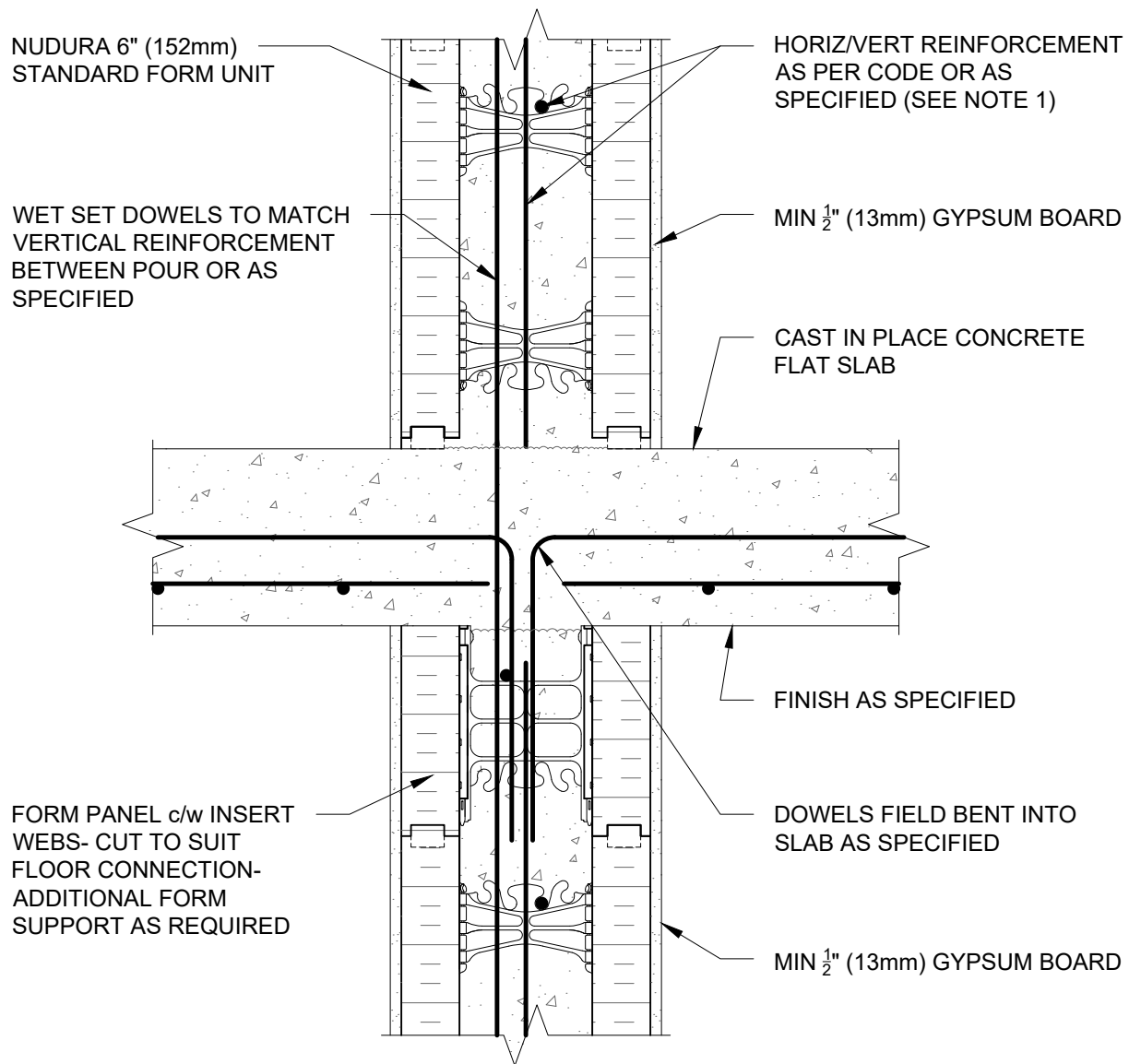
File Name:

G6D02



Construction Products Group

[www.tremcocpg.com](http://www.tremcocpg.com)



#### NOTES:

1) FOR OPTIMAL REINFORCEMENT PLACEMENT IN THE NUDURA FORM, SPACING OF HORIZONTAL REINFORCEMENT TO BE SPECIFIED AT 18" (457mm) O.C. AND VERTICAL REINFORCEMENT TO BE SPECIFIED AT MULTIPLES OF 8" (203mm) O.C. REFER TO NUDURA REINFORCEMENT PLACEMENT DETAILS.

This detail is for general informational purposes only. The project design professional determines, in its sole discretion, whether this detail or a functionally equivalent detail is best suited for the project with respect to any architecture, engineering, and design requirements, including any local building code requirements. If this document is not reviewed and the product is not approved for use by a licensed design professional, the customer agrees that the detail may contain substantive flaws requiring correction, and hereby releases Tremco CPG Inc. from any and all liability related to the design and installation of the product. This detail is subject to change without notice. Contact Tremco to ensure you have the most recent version.

#### Non-Combustible Construction - Demising Wall Intermediate Floor Connections



Nudura Technical Support: 866-468-6299  
International: +1 705-726-9499

Detail: Nudura 6" (152mm) Form Unit, Concrete Flat Plate, Bearing Demising Wall

Drawn by: KS

Checked by: KS

Scale: 1:8

Revision #: 01

Revised by: KAB

Date: 3/13/2024

File Name:

G6E01



Construction Products Group

[www.tremcocpg.com](http://www.tremcocpg.com)

WET SET DOWELS TO MATCH  
VERTICAL REINFORCEMENT  
BETWEEN POUR OR AS  
SPECIFIED

MIN  $\frac{1}{2}$ " (13mm) GYPSUM BOARD

FINISHED CONCRETE  
TOPPING

HOLLOW CORE  
PRECAST SLAB

HOLLOW CORE  
PRECAST SLAB

FINISH AS SPECIFIED

FINISH AS SPECIFIED

FORM PANELS c/w INSERT WEBS-  
CUT TO SUIT FLOOR CONNECTION-  
ADDITIONAL FORM SUPPORT AS  
REQUIRED

MASONITE BEARING PAD

FIELD CUT TAPER TO PROVIDE  
ADDITIONAL CONCRETE  
BEARING SURFACE

HORIZ/VERT REINFORCEMENT  
AS PER CODE OR AS  
SPECIFIED (SEE NOTE 1)

DOWELS FIELD BENT AND  
GROUTED INTO SHEAR KEY  
JOINT BETWEEN PANELS AS  
SPECIFIED

NUDURA 8" (203mm)  
STANDARD FORM UNIT

MIN  $\frac{1}{2}$ " (13mm) GYPSUM BOARD

#### NOTES:

1) FOR OPTIMAL REINFORCEMENT PLACEMENT IN THE NUDURA FORM,  
SPACING OF HORIZONTAL REINFORCEMENT TO BE SPECIFIED AT 18"  
(457mm) O.C. AND VERTICAL REINFORCEMENT TO BE SPECIFIED AT  
MULTIPLES OF 8" (203mm) O.C. REFER TO NUDURA REINFORCEMENT  
PLACEMENT DETAILS.

This detail is for general informational purposes only. The project design professional determines, in its sole discretion, whether this detail or a functionally equivalent detail is best suited for the project with respect to any architecture, engineering, and design requirements, including any local building code requirements. If this document is not reviewed and the product is not approved for use by a licensed design professional, the customer agrees that the detail may contain substantive flaws requiring correction, and hereby releases Tremco CPG Inc. from any and all liability related to the design and installation of the product. This detail is subject to change without notice. Contact Tremco to ensure you have the most recent version.

#### Non-Combustible Construction - Demising Wall Intermediate Floor Connections



Nudura Technical Support: 866-468-6299  
International: +1 705-726-9499

Detail: Nudura 8" (203mm) Form Unit, Hollow Core Precast Slab,  
Bearing Demising Wall

Drawn by: KS

Checked by: KS

Scale: 1:8

Revision #: 01

Revised by: KAB

Date: 3/13/2024

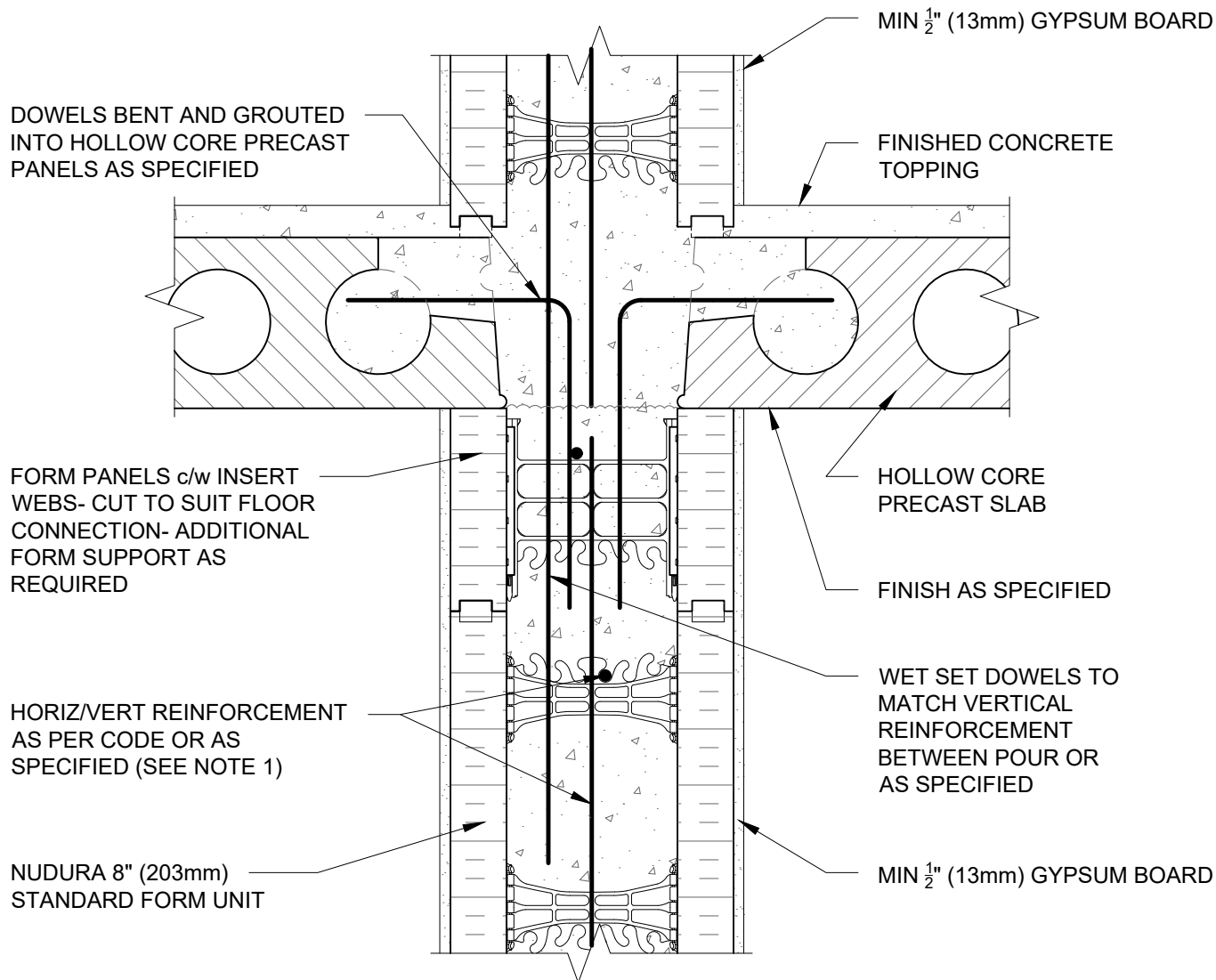
File Name:

G8A01



Construction Products Group

[www.tremcocpg.com](http://www.tremcocpg.com)



**NOTES:**

1) FOR OPTIMAL REINFORCEMENT PLACEMENT IN THE NUDURA FORM, SPACING OF HORIZONTAL REINFORCEMENT TO BE SPECIFIED AT 18" (457mm) O.C. AND VERTICAL REINFORCEMENT TO BE SPECIFIED AT MULTIPLES OF 8" (203mm) O.C. REFER TO NUDURA REINFORCEMENT PLACEMENT DETAILS.

*This detail is for general informational purposes only. The project design professional determines, in its sole discretion, whether this detail or a functionally equivalent detail is best suited for the project with respect to any architecture, engineering, and design requirements, including any local building code requirements. If this document is not reviewed and the product is not approved for use by a licensed design professional, the customer agrees that the detail may contain substantive flaws requiring correction, and hereby releases Tremco CPG Inc. from any and all liability related to the design and installation of the product. This detail is subject to change without notice. Contact Tremco to ensure you have the most recent version.*

**Non-Combustible Construction - Demising Wall Intermediate Floor Connections**



Nudura Technical Support: 866-468-6299  
International: +1 705-726-9499

Detail: Nudura 8" (203mm) Form Unit, Hollow Core Precast Slab,  
Non-Bearing Demising Wall

Drawn by: KS

Checked by: KS

Scale: 1:8

Revision #: 01

Revised by: KAB

Date: 3/13/2024

File Name:

G8A02



Construction Products Group

[www.tremcocpg.com](http://www.tremcocpg.com)

NUDURA 8" (203mm)  
STANDARD FORM UNIT

ALLOW FLOOR SLAB TO REST ON  
TO BEARING WALL CONCRETE

PROPRIETARY STEEL JOIST AND  
CONNECTION SHOWN BEYOND  
TO ALLOW FOR STAGGERING OF  
THE JOISTS

MIN 1/2" (13mm) GYPSUM BOARD

FORM PANELS c/w INSERT WEBS- CUT  
TO SUIT FLOOR CONNECTION-  
ADDITIONAL FORM SUPPORT AS  
REQUIRED

EPS FOAM REMOVED AT JOIST  
LOCATIONS ONLY TO ALLOW JOIST  
PLACEMENT

PROPRIETARY STEEL  
JOIST FLOOR SYSTEM

PROPRIETARY STEEL  
JOIST FLOOR SYSTEM

HORIZ/VERT REINFORCEMENT  
AS PER CODE OR AS SPECIFIED  
(SEE NOTE 1)

CEILING FINISH AS PER STEEL JOIST  
MANUFACTURERS SPECIFICATION  
(SEE NOTE 2)

WET SET DOWELS TO MATCH  
VERTICAL REINFORCEMENT  
BETWEEN POUR OR AS  
SPECIFIED

MIN 1/2" (13mm) GYPSUM BOARD

NOTES:

1) FOR OPTIMAL REINFORCEMENT PLACEMENT IN THE NUDURA FORM, SPACING OF HORIZONTAL REINFORCEMENT TO BE SPECIFIED AT 18" (457mm) O.C. AND VERTICAL REINFORCEMENT TO BE SPECIFIED AT MULTIPLES OF 8" (203mm) O.C. REFER TO NUDURA REINFORCEMENT PLACEMENT DETAILS.

2) WHERE GYPSUM BOARD IS REQUIRED TO COMPLETE FIRE RATED ASSEMBLY, EPS FOAM KERF CUT TO ENABLE CEILING FINISH TO PROVIDE THERMAL BARRIER CONTACT TO CONCRETE.

This detail is for general informational purposes only. The project design professional determines, in its sole discretion, whether this detail or a functionally equivalent detail is best suited for the project with respect to any architecture, engineering, and design requirements, including any local building code requirements. If this document is not reviewed and the product is not approved for use by a licensed design professional, the customer agrees that the detail may contain substantive flaws requiring correction, and hereby releases Tremco CPG Inc. from any and all liability related to the design and installation of the product. This detail is subject to change without notice. Contact Tremco to ensure you have the most recent version.

**Non-Combustible Construction - Demising Wall Intermediate Floor Connections**



Nudura Technical Support: 866-468-6299  
International: +1 705-726-9499

Detail: Nudura 8" (203mm) Form Unit, Composite Steel Deck-Slab, Steel Joist on  
Non-Bearing Demising Wall

Drawn by: KS

Checked by: KS

Scale: 1:8

Revision #: 01

Revised by: KAB

Date: 3/13/2024

File Name:

G8B01



Construction Products Group

[www.tremcocpg.com](http://www.tremcocpg.com)



NUDURA 8" (203mm)  
STANDARD FORM UNIT

MIN 1/2" (13mm) GYPSUM BOARD

ALLOW FLOOR SLAB TO REST ON  
TO BEARING WALL CONCRETE

FORM PANELS c/w INSERT  
WEBS- CUT TO SUIT FLOOR  
CONNECTION- ADDITIONAL  
FORM SUPPORT AS REQUIRED

PROPRIETARY STEEL JOIST  
FLOOR SYSTEM

PROPRIETARY STEEL JOIST  
FLOOR SYSTEM

HORIZ/VERT REINFORCEMENT  
AS PER CODE OR AS  
SPECIFIED (SEE NOTE 1)

CEILING FINISH AS PER STEEL JOIST  
MANUFACTURERS SPECIFICATION  
(SEE NOTE 2)

WET SET DOWELS TO MATCH  
VERTICAL REINFORCEMENT  
BETWEEN POUR OR AS  
SPECIFIED

MIN 1/2" (13mm) GYPSUM BOARD

NOTES:

1) FOR OPTIMAL REINFORCEMENT PLACEMENT IN THE NUDURA FORM, SPACING OF HORIZONTAL REINFORCEMENT TO BE SPECIFIED AT 18" (457mm) O.C. AND VERTICAL REINFORCEMENT TO BE SPECIFIED AT MULTIPLES OF 8" (203mm) O.C. REFER TO NUDURA REINFORCEMENT PLACEMENT DETAILS.

2) WHERE GYPSUM BOARD IS REQUIRED TO COMPLETE FIRE RATED ASSEMBLY, EPS FOAM KERF CUT TO ENABLE CEILING FINISH TO PROVIDE THERMAL BARRIER CONTACT TO CONCRETE.

This detail is for general informational purposes only. The project design professional determines, in its sole discretion, whether this detail or a functionally equivalent detail is best suited for the project with respect to any architecture, engineering, and design requirements, including any local building code requirements. If this document is not reviewed and the product is not approved for use by a licensed design professional, the customer agrees that the detail may contain substantive flaws requiring correction, and hereby releases Tremco CPG Inc. from any and all liability related to the design and installation of the product. This detail is subject to change without notice. Contact Tremco to ensure you have the most recent version.

**Non-Combustible Construction - Demising Wall Intermediate Floor Connections**



Nudura Technical Support: 866-468-6299  
International: +1 705-726-9499

Detail: Nudura 8" (203mm) Form Unit, Proprietary Steel Joist Floor System,  
Non-Bearing Demising Wall

Drawn by: KS

Checked by: KS

Scale: 1:8

Revision #: 01

Revised by: KAB

Date: 3/13/2024

File Name:

G8B02



Construction Products Group

[www.tremcocpg.com](http://www.tremcocpg.com)

FORM PANELS c/w INSERT WEBS-  
CUT TO SUIT FLOOR CONNECTION-  
ADDITIONAL FORM SUPPORT AS  
REQUIRED

U BRACKET ANCHOR INSERT

GYPSUM BOARD FINISHED/FIRE  
STOP INSTALLED AT JOISTS AS  
PER CODE

COMPOSITE STEEL DECK-SLAB AND  
REINFORCEMENT AS SPECIFIED

OWSJ AND CONNECTION SHOWN  
BEYOND TO ALLOW FOR  
STAGGERING OF JOISTS

OWSJ

WET SET DOWELS FIELD BENT  
INTO SLAB AS SPECIFIED

INTERIOR INSULATION REMOVED  
AT JOIST LOCATIONS

WET SET DOWELS  
TO MATCH VERTICAL  
REINFORCEMENT  
BETWEEN POUR OR AS  
SPECIFIED

MIN  $\frac{1}{2}$ " (13mm) GYPSUM BOARD

HORIZ/VERT REINFORCEMENT  
AS PER CODE OR AS SPECIFIED  
(SEE NOTE 1)

NUDURA 8" (203mm)  
STANDARD FORM UNIT

#### NOTES:

1) FOR OPTIMAL REINFORCEMENT PLACEMENT IN THE NUDURA FORM,  
SPACING OF HORIZONTAL REINFORCEMENT TO BE SPECIFIED AT 18"  
(457mm) O.C. AND VERTICAL REINFORCEMENT TO BE SPECIFIED AT  
MULTIPLES OF 8" (203mm) O.C. REFER TO NUDURA REINFORCEMENT  
PLACEMENT DETAILS.

*This detail is for general informational purposes only. The project design professional determines, in its sole discretion, whether this detail or a functionally equivalent detail is best suited for the project with respect to any architecture, engineering, and design requirements, including any local building code requirements. If this document is not reviewed and the product is not approved for use by a licensed design professional, the customer agrees that the detail may contain substantive flaws requiring correction, and hereby releases Tremco CPG Inc. from any and all liability related to the design and installation of the product. This detail is subject to change without notice. Contact Tremco to ensure you have the most recent version.*

#### Non-Combustible Construction - Demising Wall Intermediate Floor Connections



Nudura Technical Support: 866-468-6299  
International: +1 705-726-9499

Detail: Nudura 8" (203mm) Form Unit, Composite Steel Deck-Slab, Steel Joist on  
Bearing Demising Wall

Drawn by: KS

Checked by: KS

Scale: 1:8

Revision #: 01

Revised by: KAB

Date: 3/13/2024

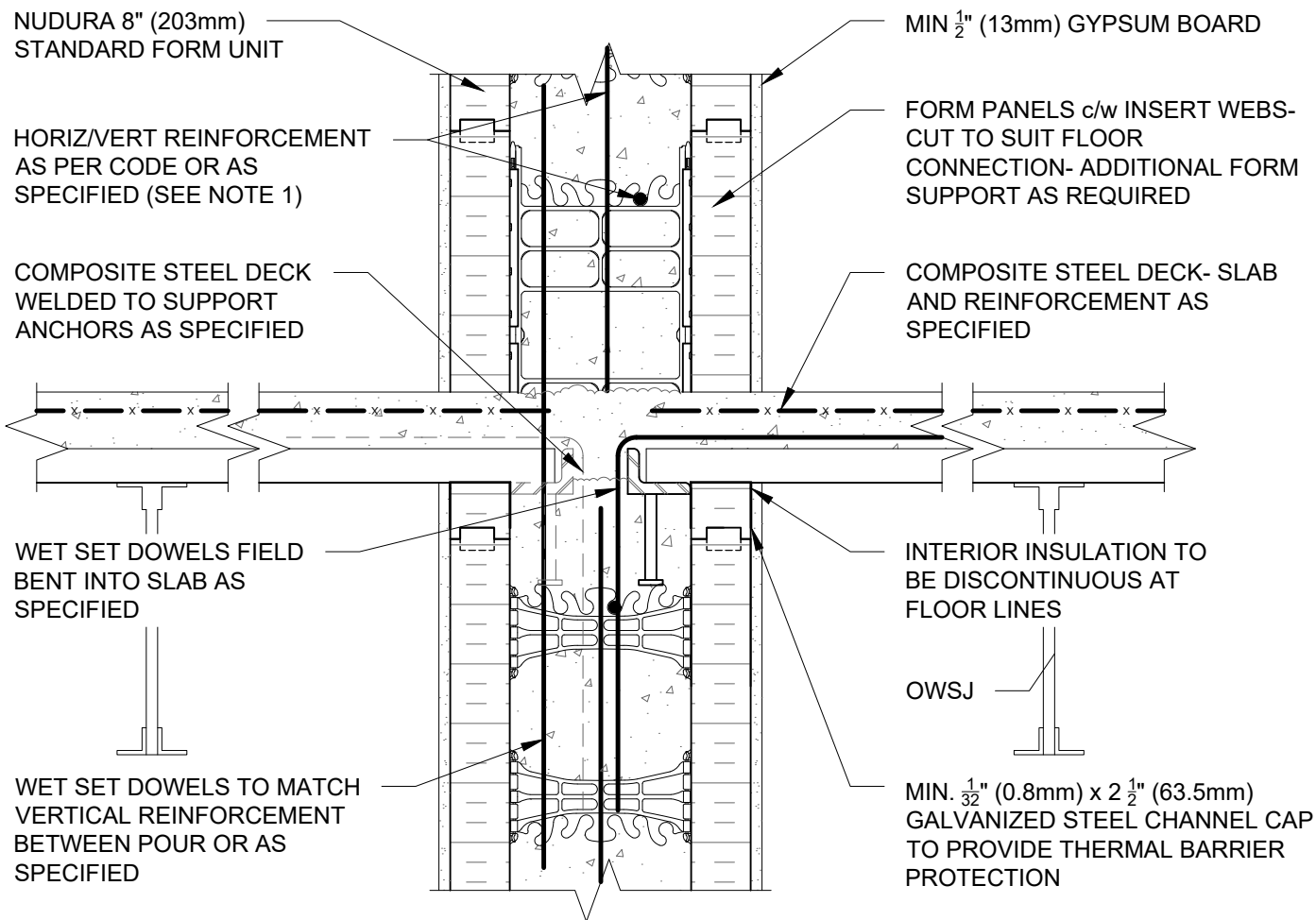
File Name:

G8C01



Construction Products Group

www.tremcocpg.com



#### NOTES:

1) FOR OPTIMAL REINFORCEMENT PLACEMENT IN THE NUDURA FORM, SPACING OF HORIZONTAL REINFORCEMENT TO BE SPECIFIED AT 18" (457mm) O.C. AND VERTICAL REINFORCEMENT TO BE SPECIFIED AT MULTIPLES OF 8" (203mm) O.C. REFER TO NUDURA REINFORCEMENT PLACEMENT DETAILS.

*This detail is for general informational purposes only. The project design professional determines, in its sole discretion, whether this detail or a functionally equivalent detail is best suited for the project with respect to any architecture, engineering, and design requirements, including any local building code requirements. If this document is not reviewed and the product is not approved for use by a licensed design professional, the customer agrees that the detail may contain substantive flaws requiring correction, and hereby releases Tremco CPG Inc. from any and all liability related to the design and installation of the product. This detail is subject to change without notice. Contact Tremco to ensure you have the most recent version.*

#### Non-Combustible Construction - Demising Wall Intermediate Floor Connections



Nudura Technical Support: 866-468-6299  
International: +1 705-726-9499

Detail: Nudura 8" (203mm) Form Unit, Composite Steel Deck-Slab, Steel Joist on Non-Bearing Demising Wall

Drawn by: KS

Checked by: KS

Scale: 1:8

Revision #: 01

Revised by: KAB

Date: 3/13/2024

File Name:

G8C02



Construction Products Group

[www.tremcocpg.com](http://www.tremcocpg.com)

NUDURA 8" (203mm)  
STANDARD FORM UNIT

MIN  $\frac{1}{2}$ " (13mm) GYPSUM BOARD

HORIZ/VERT REINFORCEMENT  
AS PER CODE OR AS  
SPECIFIED (SEE NOTE 1)

INSULATED CONCRETE  
FLOOR FORM INSTALLED AS  
PER MANUFACTURERS  
SPECIFICATIONS

WET SET DOWELS FIELD  
BENT INTO SLAB AS  
SPECIFIED

THERMAL BARRIER AS PER  
FLOOR MANUFACTURERS  
SPECIFICATION

WET SET DOWELS TO MATCH  
VERTICAL REINFORCEMENT  
BETWEEN POUR OR AS  
SPECIFIED

TEMPORARY STEEL ANGLE

NUDURA 8" (203mm)  
HEIGHT ADJUSTER TIE

#### NOTES:

1) FOR OPTIMAL REINFORCEMENT PLACEMENT IN THE NUDURA FORM, SPACING OF HORIZONTAL REINFORCEMENT TO BE SPECIFIED AT 18" (457mm) O.C. AND VERTICAL REINFORCEMENT TO BE SPECIFIED AT MULTIPLES OF 8" (203mm) O.C. REFER TO NUDURA REINFORCEMENT PLACEMENT DETAILS.

This detail is for general informational purposes only. The project design professional determines, in its sole discretion, whether this detail or a functionally equivalent detail is best suited for the project with respect to any architecture, engineering, and design requirements, including any local building code requirements. If this document is not reviewed and the product is not approved for use by a licensed design professional, the customer agrees that the detail may contain substantive flaws requiring correction, and hereby releases Tremco CPG Inc. from any and all liability related to the design and installation of the product. This detail is subject to change without notice. Contact Tremco to ensure you have the most recent version.

#### Non-Combustible Construction - Demising Wall Intermediate Floor Connections



Nudura Technical Support: 866-468-6299  
International: +1 705-726-9499

Detail: Nudura 8" (203mm) Form Unit, ICFS Connection, ICFS Resting on Form, Bearing Demising Wall

Drawn by: KS

Checked by: KS

Scale: 1:8

Revision #: 01

Revised by: KAB

Date: 3/13/2024

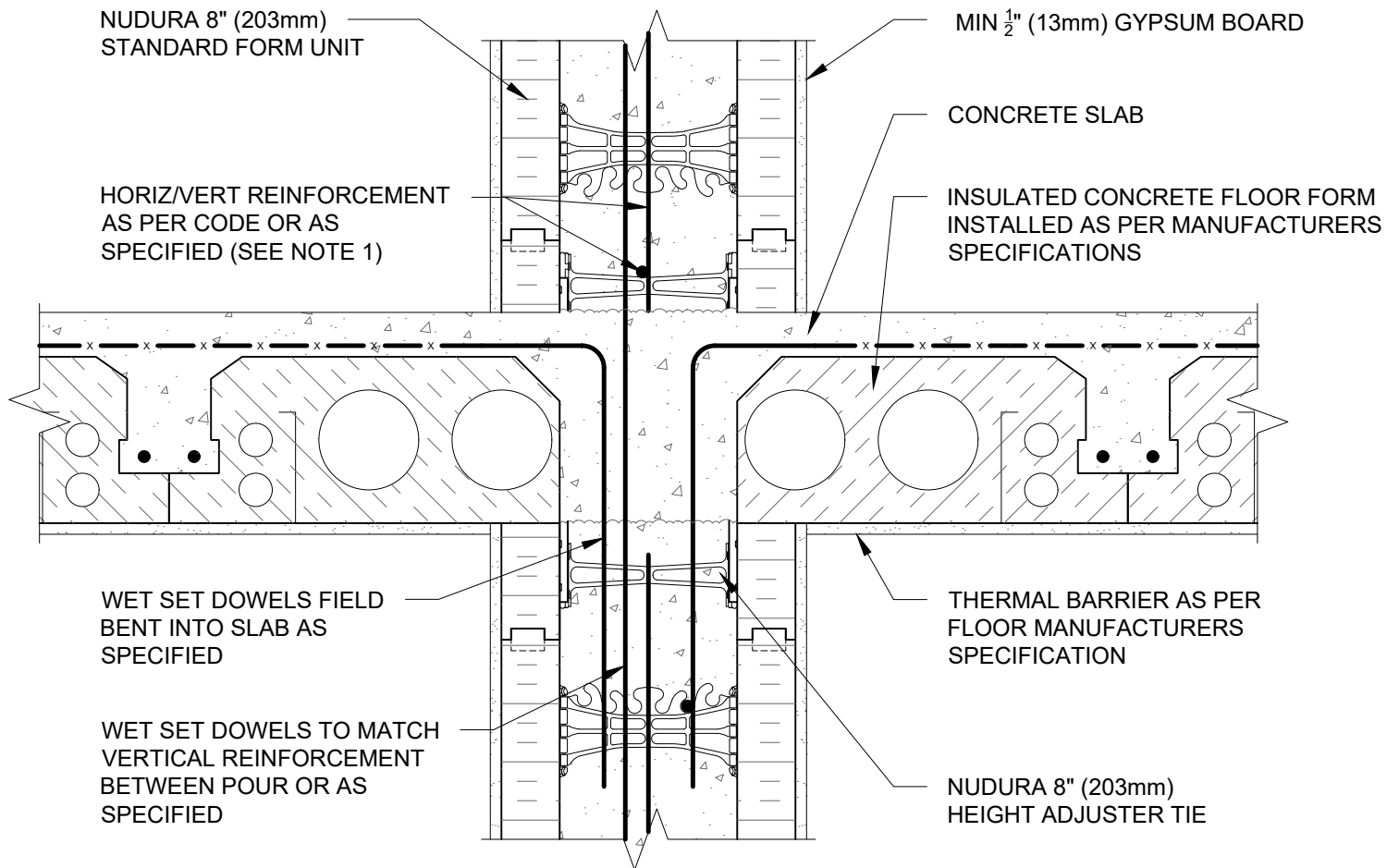
[www.tremcocpg.com](http://www.tremcocpg.com)

File Name:

G8D01



Construction Products Group



#### NOTES:

1) FOR OPTIMAL REINFORCEMENT PLACEMENT IN THE NUDURA FORM, SPACING OF HORIZONTAL REINFORCEMENT TO BE SPECIFIED AT 18" (457mm) O.C. AND VERTICAL REINFORCEMENT TO BE SPECIFIED AT MULTIPLES OF 8" (203mm) O.C. REFER TO NUDURA REINFORCEMENT PLACEMENT DETAILS.

*This detail is for general informational purposes only. The project design professional determines, in its sole discretion, whether this detail or a functionally equivalent detail is best suited for the project with respect to any architecture, engineering, and design requirements, including any local building code requirements. If this document is not reviewed and the product is not approved for use by a licensed design professional, the customer agrees that the detail may contain substantive flaws requiring correction, and hereby releases Tremco CPG Inc. from any and all liability related to the design and installation of the product. This detail is subject to change without notice. Contact Tremco to ensure you have the most recent version.*

#### Non-Combustible Construction - Demising Wall Intermediate Floor Connections



Nudura Technical Support: 866-468-6299  
International: +1 705-726-9499

Detail: Nudura 8" (203mm) Form Unit, ICFS Connection, ICFS Resting on Form, Non-Bearing Demising Wall

Drawn by: KS

Checked by: KS

Scale: 1:8

Revision #: 01

Revised by: KAB

Date: 3/13/2024

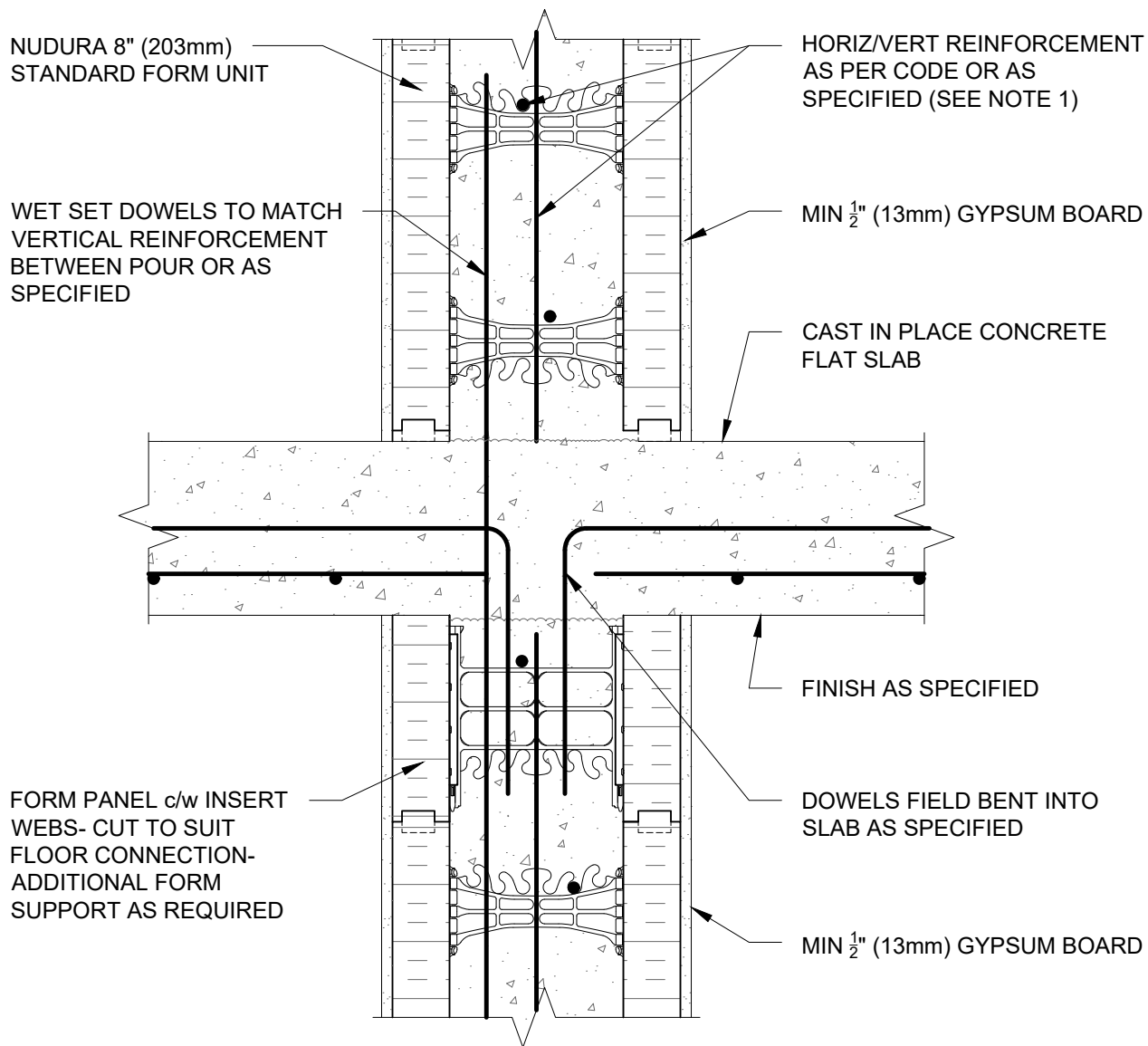
File Name:

G8D02



Construction Products Group

[www.tremcocpg.com](http://www.tremcocpg.com)



# NOTES:

1) FOR OPTIMAL REINFORCEMENT PLACEMENT IN THE NUDURA FORM, SPACING OF HORIZONTAL REINFORCEMENT TO BE SPECIFIED AT 18" (457mm) O.C. AND VERTICAL REINFORCEMENT TO BE SPECIFIED AT MULTIPLES OF 8" (203mm) O.C. REFER TO NUDURA REINFORCEMENT PLACEMENT DETAILS.

*This detail is for general informational purposes only. The project design professional determines, in its sole discretion, whether this detail or a functionally equivalent detail is best suited for the project with respect to any architecture, engineering, and design requirements, including any local building code requirements. If this document is not reviewed and the product is not approved for use by a licensed design professional, the customer agrees that the detail may contain substantive flaws requiring correction, and hereby releases Tremco CPG Inc. from any and all liability related to the design and installation of the product. This detail is subject to change without notice. Contact Tremco to ensure you have the most recent version.*

## Non-Combustible Construction - Demising Wall Intermediate Floor Connections



Nudura Technical Support: 866-468-6299  
International: +1 705-726-9499

Detail: Nudura 8" (203mm) Form Unit, Concrete Flat Plate, Bearing Demising Wall

Drawn by: KS

Checked by: KS

Scale: 1:8

Revision #: 01

Revised by: KAB

Date: 3/13/2024

File Name:

G8E01



Construction Products Group

www.tremcocpg.com

WET SET DOWELS TO MATCH  
VERTICAL REINFORCEMENT  
BETWEEN POUR OR AS  
SPECIFIED

MIN  $\frac{1}{2}$ " (13mm) GYPSUM BOARD

FINISHED CONCRETE  
TOPPING

HOLLOW CORE  
PRECAST SLAB

HOLLOW CORE  
PRECAST SLAB

FINISH AS SPECIFIED

FINISH AS SPECIFIED

FORM PANELS c/w INSERT WEBS-  
CUT TO SUIT FLOOR CONNECTION-  
ADDITIONAL FORM SUPPORT AS  
REQUIRED

MASONITE BEARING PAD

HORIZ/VERT REINFORCEMENT  
AS PER CODE OR AS  
SPECIFIED (SEE NOTE 1)

DOWELS FIELD BENT AND  
GROUTED INTO SHEAR KEY  
JOINT BETWEEN PANELS AS  
SPECIFIED

NUDURA 10" (254mm)  
STANDARD FORM UNIT

MIN  $\frac{1}{2}$ " (13mm) GYPSUM BOARD

#### NOTES:

1) FOR OPTIMAL REINFORCEMENT PLACEMENT IN THE NUDURA FORM,  
SPACING OF HORIZONTAL REINFORCEMENT TO BE SPECIFIED AT 18"  
(457mm) O.C. AND VERTICAL REINFORCEMENT TO BE SPECIFIED AT  
MULTIPLES OF 8" (203mm) O.C. REFER TO NUDURA REINFORCEMENT  
PLACEMENT DETAILS.

This detail is for general informational purposes only. The project design professional determines, in its sole discretion, whether this detail or a functionally equivalent detail is best suited for the project with respect to any architecture, engineering, and design requirements, including any local building code requirements. If this document is not reviewed and the product is not approved for use by a licensed design professional, the customer agrees that the detail may contain substantive flaws requiring correction, and hereby releases Tremco CPG Inc. from any and all liability related to the design and installation of the product. This detail is subject to change without notice. Contact Tremco to ensure you have the most recent version.

#### Non-Combustible Construction - Demising Wall Intermediate Floor Connections



Nudura Technical Support: 866-468-6299  
International: +1 705-726-9499

Detail: Nudura 10" (254mm) Form Unit, Hollow Core Precast Slab,  
Bearing Demising Wall

Drawn by: KS

Checked by: KS

Scale: 1:8

Revision #: 01

Revised by: KAB

Date: 3/13/2024

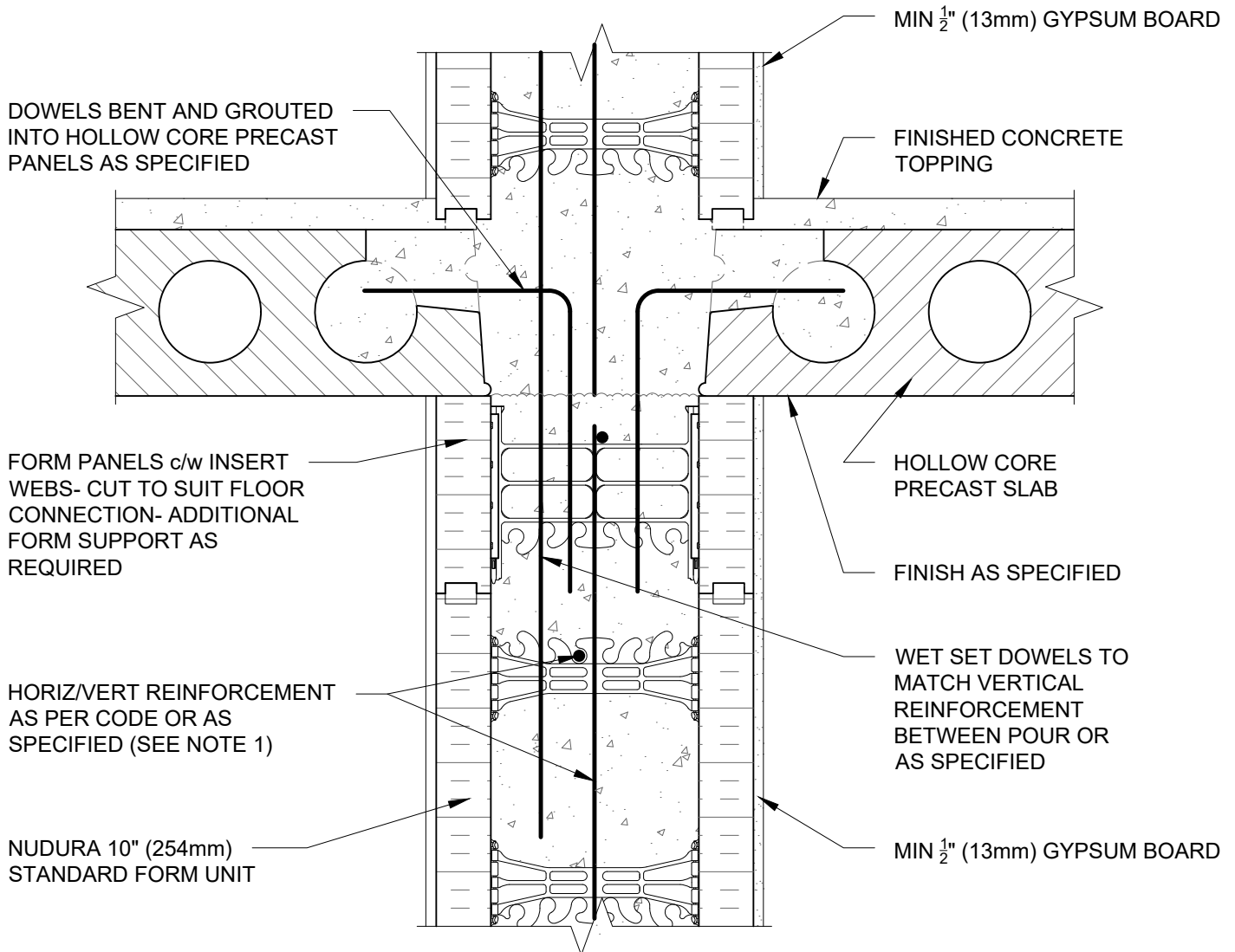
[www.tremcocpg.com](http://www.tremcocpg.com)

File Name:

G10A01



Construction Products Group



#### NOTES:

1) FOR OPTIMAL REINFORCEMENT PLACEMENT IN THE NUDURA FORM, SPACING OF HORIZONTAL REINFORCEMENT TO BE SPECIFIED AT 18" (457mm) O.C. AND VERTICAL REINFORCEMENT TO BE SPECIFIED AT MULTIPLES OF 8" (203mm) O.C. REFER TO NUDURA REINFORCEMENT PLACEMENT DETAILS.

This detail is for general informational purposes only. The project design professional determines, in its sole discretion, whether this detail or a functionally equivalent detail is best suited for the project with respect to any architecture, engineering, and design requirements, including any local building code requirements. If this document is not reviewed and the product is not approved for use by a licensed design professional, the customer agrees that the detail may contain substantive flaws requiring correction, and hereby releases Tremco CPG Inc. from any and all liability related to the design and installation of the product. This detail is subject to change without notice. Contact Tremco to ensure you have the most recent version.

#### Non-Combustible Construction - Demising Wall Intermediate Floor Connections



Nudura Technical Support: 866-468-6299  
International: +1 705-726-9499

Detail: Nudura 10" (254mm) Form Unit, Hollow Core Precast Slab,  
Non-Bearing Demising Wall

Drawn by: KS

Checked by: KS

Scale: 1:8

Revision #: 01

Revised by: KAB

Date: 3/13/2024

[www.tremcocpg.com](http://www.tremcocpg.com)

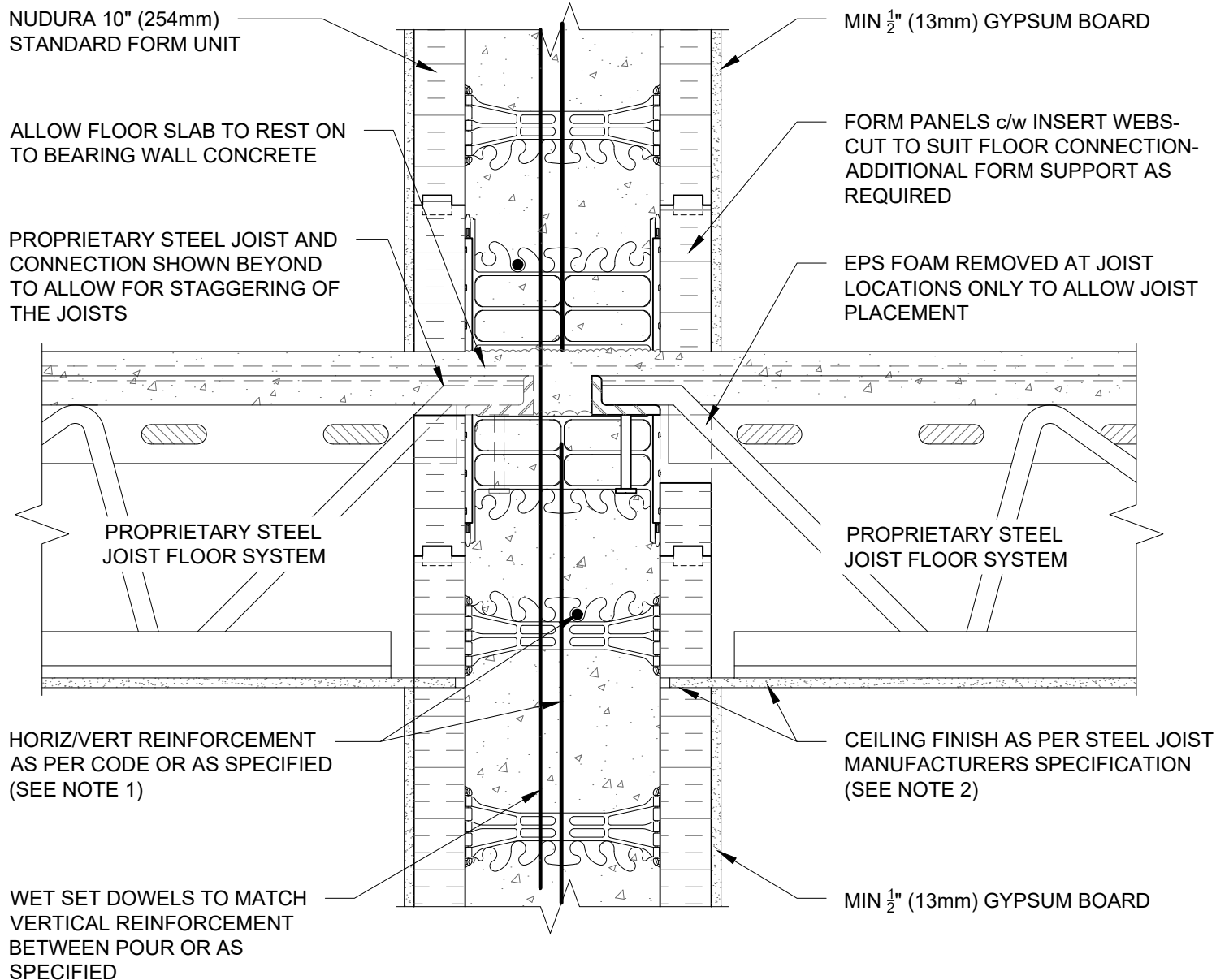
File Name:

G10A02



Construction Products Group





#### NOTES:

1) FOR OPTIMAL REINFORCEMENT PLACEMENT IN THE NUDURA FORM, SPACING OF HORIZONTAL REINFORCEMENT TO BE SPECIFIED AT 18" (457mm) O.C. AND VERTICAL REINFORCEMENT TO BE SPECIFIED AT MULTIPLES OF 8" (203mm) O.C. REFER TO NUDURA REINFORCEMENT PLACEMENT DETAILS.

2) WHERE GYPSUM BOARD IS REQUIRED TO COMPLETE FIRE RATED ASSEMBLY, EPS FOAM KERF CUT TO ENABLE CEILING FINISH TO PROVIDE THERMAL BARRIER CONTACT TO CONCRETE.

This detail is for general informational purposes only. The project design professional determines, in its sole discretion, whether this detail or a functionally equivalent detail is best suited for the project with respect to any architecture, engineering, and design requirements, including any local building code requirements. If this document is not reviewed and the product is not approved for use by a licensed design professional, the customer agrees that the detail may contain substantive flaws requiring correction, and hereby releases Tremco CPG Inc. from any and all liability related to the design and installation of the product. This detail is subject to change without notice. Contact Tremco to ensure you have the most recent version.

#### Non-Combustible Construction - Demising Wall Intermediate Floor Connections



Nudura Technical Support: 866-468-6299  
International: +1 705-726-9499

Detail: Nudura 10" (254mm) Form Unit, Proprietary Steel Joist Floor System,  
Bearing Demising Wall

Drawn by: KS

Checked by: KS

Scale: 1:8

Revision #: 01

Revised by: KAB

Date: 3/13/2024

File Name:

G10B01



Construction Products Group

[www.tremcocpg.com](http://www.tremcocpg.com)

NUDURA 10" (254mm)  
STANDARD FORM UNIT

ALLOW FLOOR SLAB TO REST ON  
TO BEARING WALL CONCRETE

MIN ½" (13mm) GYPSUM BOARD

FORM PANELS c/w INSERT  
WEBS- CUT TO SUIT FLOOR  
CONNECTION- ADDITIONAL  
FORM SUPPORT AS REQUIRED

PROPRIETARY STEEL JOIST  
FLOOR SYSTEM

PROPRIETARY STEEL JOIST  
FLOOR SYSTEM

HORIZ/VERT REINFORCEMENT  
AS PER CODE OR AS  
SPECIFIED (SEE NOTE 1)

CEILING FINISH AS PER STEEL  
JOIST MANUFACTURERS  
SPECIFICATION (SEE NOTE 2)

WET SET DOWELS TO MATCH  
VERTICAL REINFORCEMENT  
BETWEEN POUR OR AS  
SPECIFIED

MIN ½" (13mm) GYPSUM BOARD

NOTES:

1) FOR OPTIMAL REINFORCEMENT PLACEMENT IN THE NUDURA FORM, SPACING OF HORIZONTAL REINFORCEMENT TO BE SPECIFIED AT 18" (457mm) O.C. AND VERTICAL REINFORCEMENT TO BE SPECIFIED AT MULTIPLES OF 8" (203mm) O.C. REFER TO NUDURA REINFORCEMENT PLACEMENT DETAILS.

2) WHERE GYPSUM BOARD IS REQUIRED TO COMPLETE FIRE RATED ASSEMBLY, EPS FOAM KERF CUT TO ENABLE CEILING FINISH TO PROVIDE THERMAL BARRIER CONTACT TO CONCRETE.

This detail is for general informational purposes only. The project design professional determines, in its sole discretion, whether this detail or a functionally equivalent detail is best suited for the project with respect to any architecture, engineering, and design requirements, including any local building code requirements. If this document is not reviewed and the product is not approved for use by a licensed design professional, the customer agrees that the detail may contain substantive flaws requiring correction, and hereby releases Tremco CPG Inc. from any and all liability related to the design and installation of the product. This detail is subject to change without notice. Contact Tremco to ensure you have the most recent version.

**Non-Combustible Construction - Demising Wall Intermediate Floor Connections**



Nudura Technical Support: 866-468-6299  
International: +1 705-726-9499

Detail: Nudura 10" (254mm) Form Unit, Proprietary Steel Joist Floor System,  
Non-Bearing Demising Wall

Drawn by: KS

Checked by: KS

Scale: 1:8

Revision #: 01

Revised by: KAB

Date: 3/13/2024

File Name:

G10B02



Construction Products Group

[www.tremcocpg.com](http://www.tremcocpg.com)

FORM PANELS c/w INSERT WEBS-  
CUT TO SUIT FLOOR CONNECTION-  
ADDITIONAL FORM SUPPORT AS  
REQUIRED

U BRACKET ANCHOR INSERT

GYPSUM BOARD FINISHED/FIRE  
STOP INSTALLED AT JOISTS AS  
PER CODE

COMPOSITE STEEL DECK-SLAB  
AND REINFORCEMENT AS  
SPECIFIED

OWSJ AND CONNECTION SHOWN  
BEYOND TO ALLOW FOR  
STAGGERING OF JOISTS

OWSJ

WET SET DOWELS FIELD BENT  
INTO SLAB AS SPECIFIED

INTERIOR INSULATION REMOVED  
AT JOIST LOCATIONS

WET SET DOWELS  
TO MATCH VERTICAL  
REINFORCEMENT  
BETWEEN POUR OR AS  
SPECIFIED

MIN  $\frac{1}{2}$ " (13mm) GYPSUM BOARD

HORIZ/VERT REINFORCEMENT  
AS PER CODE OR AS SPECIFIED  
(SEE NOTE 1)

NUDURA 10" (254mm)  
STANDARD FORM UNIT

#### NOTES:

1) FOR OPTIMAL REINFORCEMENT PLACEMENT IN THE NUDURA FORM,  
SPACING OF HORIZONTAL REINFORCEMENT TO BE SPECIFIED AT 18"  
(457mm) O.C. AND VERTICAL REINFORCEMENT TO BE SPECIFIED AT  
MULTIPLES OF 8" (203mm) O.C. REFER TO NUDURA REINFORCEMENT  
PLACEMENT DETAILS.

*This detail is for general informational purposes only. The project design professional determines, in its sole discretion, whether this detail or a functionally equivalent detail is best suited for the project with respect to any architecture, engineering, and design requirements, including any local building code requirements. If this document is not reviewed and the product is not approved for use by a licensed design professional, the customer agrees that the detail may contain substantive flaws requiring correction, and hereby releases Tremco CPG Inc. from any and all liability related to the design and installation of the product. This detail is subject to change without notice. Contact Tremco to ensure you have the most recent version.*

#### Non-Combustible Construction - Demising Wall Intermediate Floor Connections



Nudura Technical Support: 866-468-6299  
International: +1 705-726-9499

Detail: Nudura 10" (254mm) Form Unit, Composite Steel Deck-Slab, Steel Joist on  
Bearing Wall

Drawn by: KS

Checked by: KS

Scale: 1:8

Revision #: 01

Revised by: KAB

Date: 3/13/2024

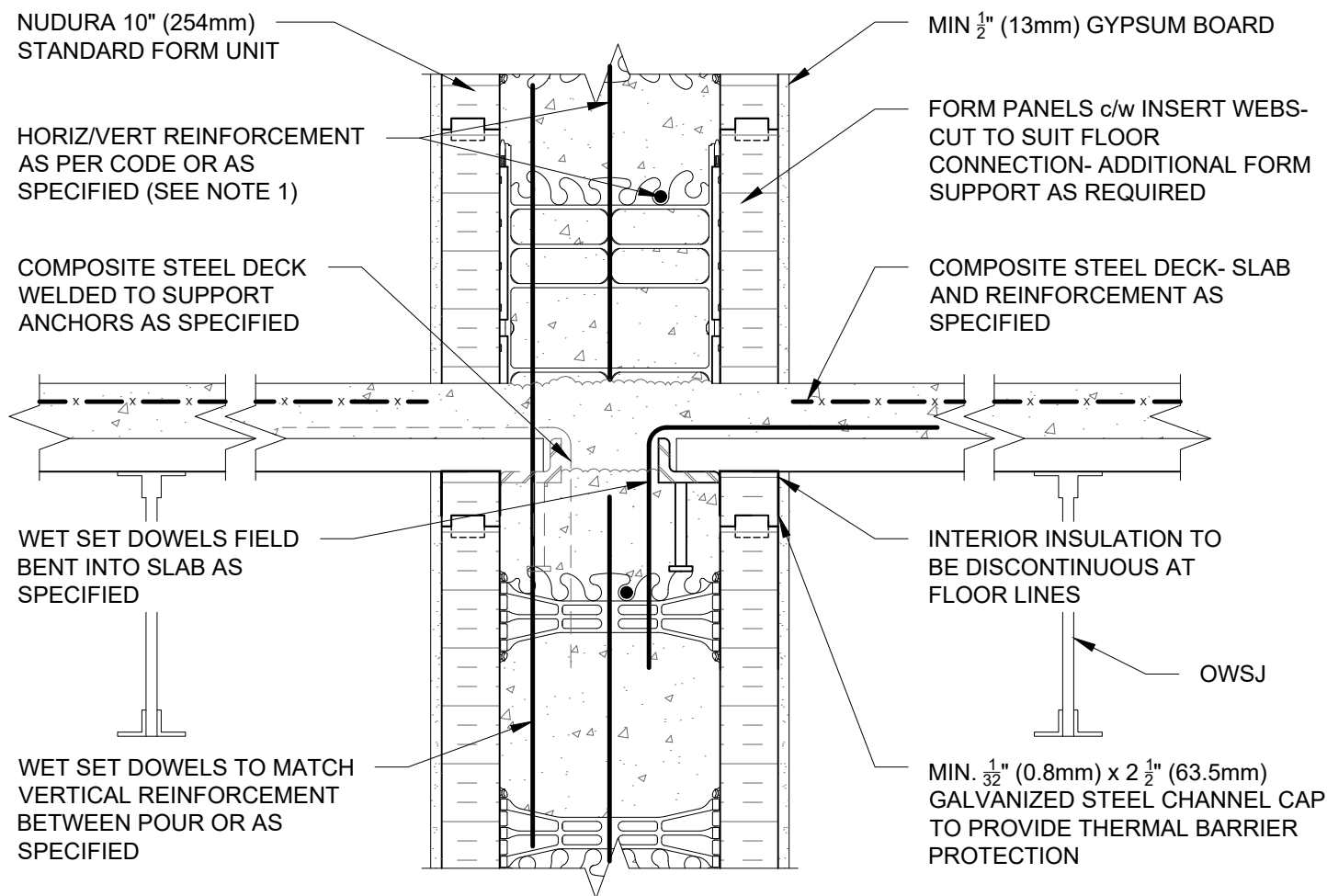
File Name:

G10C01



Construction Products Group

www.tremcocpg.com



#### NOTES:

1) FOR OPTIMAL REINFORCEMENT PLACEMENT IN THE NUDURA FORM, SPACING OF HORIZONTAL REINFORCEMENT TO BE SPECIFIED AT 18" (457mm) O.C. AND VERTICAL REINFORCEMENT TO BE SPECIFIED AT MULTIPLES OF 8" (203mm) O.C. REFER TO NUDURA REINFORCEMENT PLACEMENT DETAILS.

This detail is for general informational purposes only. The project design professional determines, in its sole discretion, whether this detail or a functionally equivalent detail is best suited for the project with respect to any architecture, engineering, and design requirements, including any local building code requirements. If this document is not reviewed and the product is not approved for use by a licensed design professional, the customer agrees that the detail may contain substantive flaws requiring correction, and hereby releases Tremco CPG Inc. from any and all liability related to the design and installation of the product. This detail is subject to change without notice. Contact Tremco to ensure you have the most recent version.

#### Non-Combustible Construction - Demising Wall Intermediate Floor Connections



Nudura Technical Support: 866-468-6299  
International: +1 705-726-9499

Detail: Nudura 10" (254mm) Form Unit, Composite Steel Deck-Slab, Steel Joist on Non-Bearing Wall

Drawn by: KS

Checked by: KS

Scale: 1:8

Revision #: 01

Revised by: KAB

Date: 3/13/2024

File Name:

G10C02



Construction Products Group

[www.tremcocpg.com](http://www.tremcocpg.com)

NUDURA 10" (254mm)  
STANDARD FORM UNIT

HORIZ/VERT REINFORCEMENT  
AS PER CODE OR AS  
SPECIFIED (SEE NOTE 1)

MIN  $\frac{1}{2}$ " (13mm) GYPSUM BOARD

INSULATED CONCRETE  
FLOOR FORM INSTALLED AS  
PER MANUFACTURERS  
SPECIFICATIONS

WET SET DOWELS FIELD  
BENT INTO SLAB AS  
SPECIFIED

THERMAL BARRIER AS PER  
FLOOR MANUFACTURERS  
SPECIFICATION

WET SET DOWELS TO MATCH  
VERTICAL REINFORCEMENT  
BETWEEN POUR OR AS  
SPECIFIED

TEMPORARY STEEL ANGLE

NUDURA 10" (254mm)  
HEIGHT ADJUSTER TIE

NOTES:

1) FOR OPTIMAL REINFORCEMENT PLACEMENT IN THE NUDURA FORM, SPACING OF HORIZONTAL REINFORCEMENT TO BE SPECIFIED AT 18" (457mm) O.C. AND VERTICAL REINFORCEMENT TO BE SPECIFIED AT MULTIPLES OF 8" (203mm) O.C. REFER TO NUDURA REINFORCEMENT PLACEMENT DETAILS.

This detail is for general informational purposes only. The project design professional determines, in its sole discretion, whether this detail or a functionally equivalent detail is best suited for the project with respect to any architecture, engineering, and design requirements, including any local building code requirements. If this document is not reviewed and the product is not approved for use by a licensed design professional, the customer agrees that the detail may contain substantive flaws requiring correction, and hereby releases Tremco CPG Inc. from any and all liability related to the design and installation of the product. This detail is subject to change without notice. Contact Tremco to ensure you have the most recent version.

**Non-Combustible Construction - Demising Wall Intermediate Floor Connections**



Nudura Technical Support: 866-468-6299  
International: +1 705-726-9499

Detail: Nudura 10" (254mm) Form Unit, ICFS Connection, ICFS Resting on Form,  
Bearing Demising Wall

Drawn by: KS

Checked by: KS

Scale: 1:8

Revision #: 01

Revised by: KAB

Date: 3/13/2024

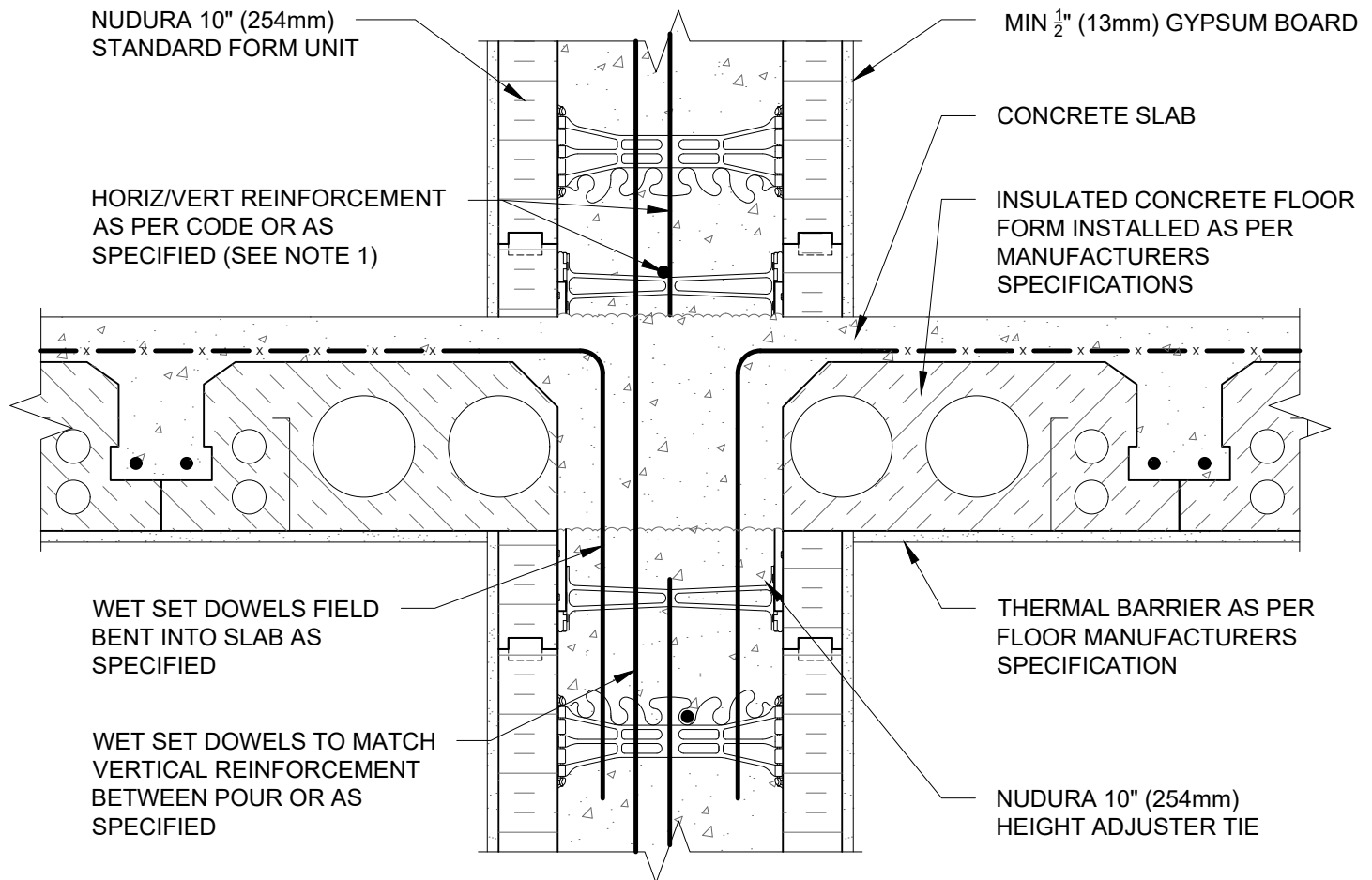
File Name:

G10D01



Construction Products Group

[www.tremcocpg.com](http://www.tremcocpg.com)



#### NOTES:

1) FOR OPTIMAL REINFORCEMENT PLACEMENT IN THE NUDURA FORM, SPACING OF HORIZONTAL REINFORCEMENT TO BE SPECIFIED AT 18" (457mm) O.C. AND VERTICAL REINFORCEMENT TO BE SPECIFIED AT MULTIPLES OF 8" (203mm) O.C. REFER TO NUDURA REINFORCEMENT PLACEMENT DETAILS.

*This detail is for general informational purposes only. The project design professional determines, in its sole discretion, whether this detail or a functionally equivalent detail is best suited for the project with respect to any architecture, engineering, and design requirements, including any local building code requirements. If this document is not reviewed and the product is not approved for use by a licensed design professional, the customer agrees that the detail may contain substantive flaws requiring correction, and hereby releases Tremco CPG Inc. from any and all liability related to the design and installation of the product. This detail is subject to change without notice. Contact Tremco to ensure you have the most recent version.*

#### Non-Combustible Construction - Demising Wall Intermediate Floor Connections



Nudura Technical Support: 866-468-6299  
International: +1 705-726-9499

Detail: Nudura 10" (254mm) Form Unit, ICFS Connection, ICFS Resting on Form, Non-Bearing Demising Wall

Drawn by: KS

Checked by: KS

Scale: 1:8

Revision #: 01

Revised by: KAB

Date: 3/13/2024

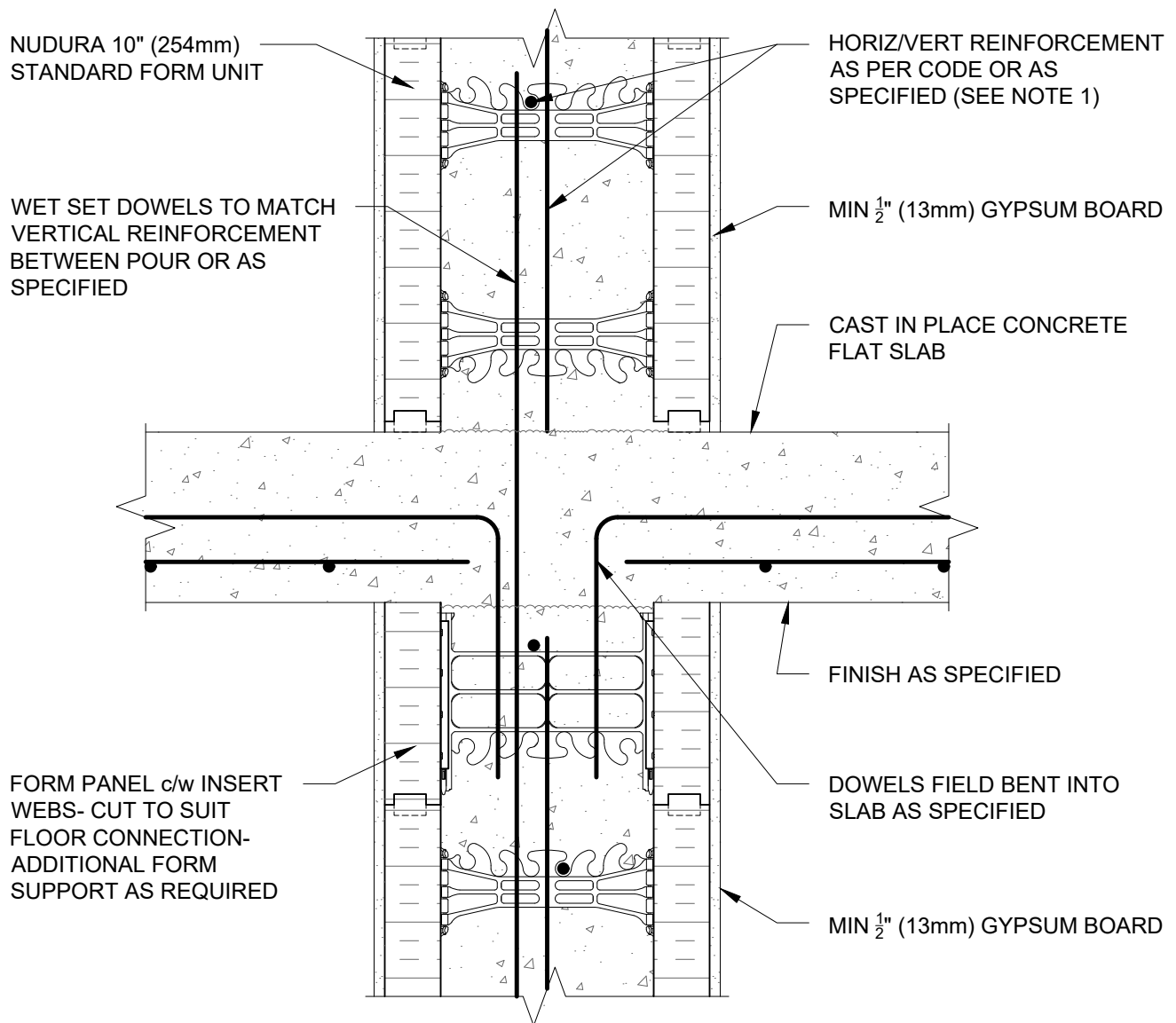
File Name:

G10D02



Construction Products Group

[www.tremcocpg.com](http://www.tremcocpg.com)



#### NOTES:

1) FOR OPTIMAL REINFORCEMENT PLACEMENT IN THE NUDURA FORM, SPACING OF HORIZONTAL REINFORCEMENT TO BE SPECIFIED AT 18" (457mm) O.C. AND VERTICAL REINFORCEMENT TO BE SPECIFIED AT MULTIPLES OF 8" (203mm) O.C. REFER TO NUDURA REINFORCEMENT PLACEMENT DETAILS.

This detail is for general informational purposes only. The project design professional determines, in its sole discretion, whether this detail or a functionally equivalent detail is best suited for the project with respect to any architecture, engineering, and design requirements, including any local building code requirements. If this document is not reviewed and the product is not approved for use by a licensed design professional, the customer agrees that the detail may contain substantive flaws requiring correction, and hereby releases Tremco CPG Inc. from any and all liability related to the design and installation of the product. This detail is subject to change without notice. Contact Tremco to ensure you have the most recent version.

#### Non-Combustible Construction - Demising Wall Intermediate Floor Connections



Nudura Technical Support: 866-468-6299  
International: +1 705-726-9499

Detail: Nudura 10" (254mm) Form Unit, Concrete Flat Place, Bearing Demising Wall

Drawn by: KS

Checked by: KS

Scale: 1:8

Revision #: 01

Revised by: KAB

Date: 3/13/2024

File Name:

G10E01



Construction Products Group

[www.tremcocpg.com](http://www.tremcocpg.com)

WET SET DOWELS TO MATCH  
VERTICAL REINFORCEMENT  
BETWEEN POUR OR AS  
SPECIFIED

MIN ½" (13mm) GYPSUM BOARD

FINISHED CONCRETE  
TOPPING

HOLLOW CORE  
PRECAST SLAB

HOLLOW CORE  
PRECAST SLAB

FINISH AS SPECIFIED

FINISH AS SPECIFIED

FORM PANELS c/w INSERT WEBS-  
CUT TO SUIT FLOOR CONNECTION-  
ADDITIONAL FORM SUPPORT AS  
REQUIRED

MASONITE BEARING PAD

HORIZ/VERT REINFORCEMENT  
AS PER CODE OR AS  
SPECIFIED (SEE NOTE 1)

DOWELS FIELD BENT AND  
GROUTED INTO SHEAR KEY  
JOINT BETWEEN PANELS AS  
SPECIFIED

NUDURA 12" (305mm)  
STANDARD FORM UNIT

MIN ½" (13mm) GYPSUM BOARD

#### NOTES:

1) FOR OPTIMAL REINFORCEMENT PLACEMENT IN THE NUDURA FORM,  
SPACING OF HORIZONTAL REINFORCEMENT TO BE SPECIFIED AT 18"  
(457mm) O.C. AND VERTICAL REINFORCEMENT TO BE SPECIFIED AT  
MULTIPLES OF 8" (203mm) O.C. REFER TO NUDURA REINFORCEMENT  
PLACEMENT DETAILS.

*This detail is for general informational purposes only. The project design professional determines, in its sole discretion, whether this detail or a functionally equivalent detail is best suited for the project with respect to any architecture, engineering, and design requirements, including any local building code requirements. If this document is not reviewed and the product is not approved for use by a licensed design professional, the customer agrees that the detail may contain substantive flaws requiring correction, and hereby releases Tremco CPG Inc. from any and all liability related to the design and installation of the product. This detail is subject to change without notice. Contact Tremco to ensure you have the most recent version.*

#### Non-Combustible Construction - Demising Wall Intermediate Floor Connections



Nudura Technical Support: 866-468-6299  
International: +1 705-726-9499

Detail: Nudura 12" (305mm) Form Unit, Hollow Core Precast Slab,  
Bearing Demising Wall

Drawn by: KS

Checked by: KS

Scale: 1:8

Revision #: 01

Revised by: KAB

Date: 3/13/2024

File Name:

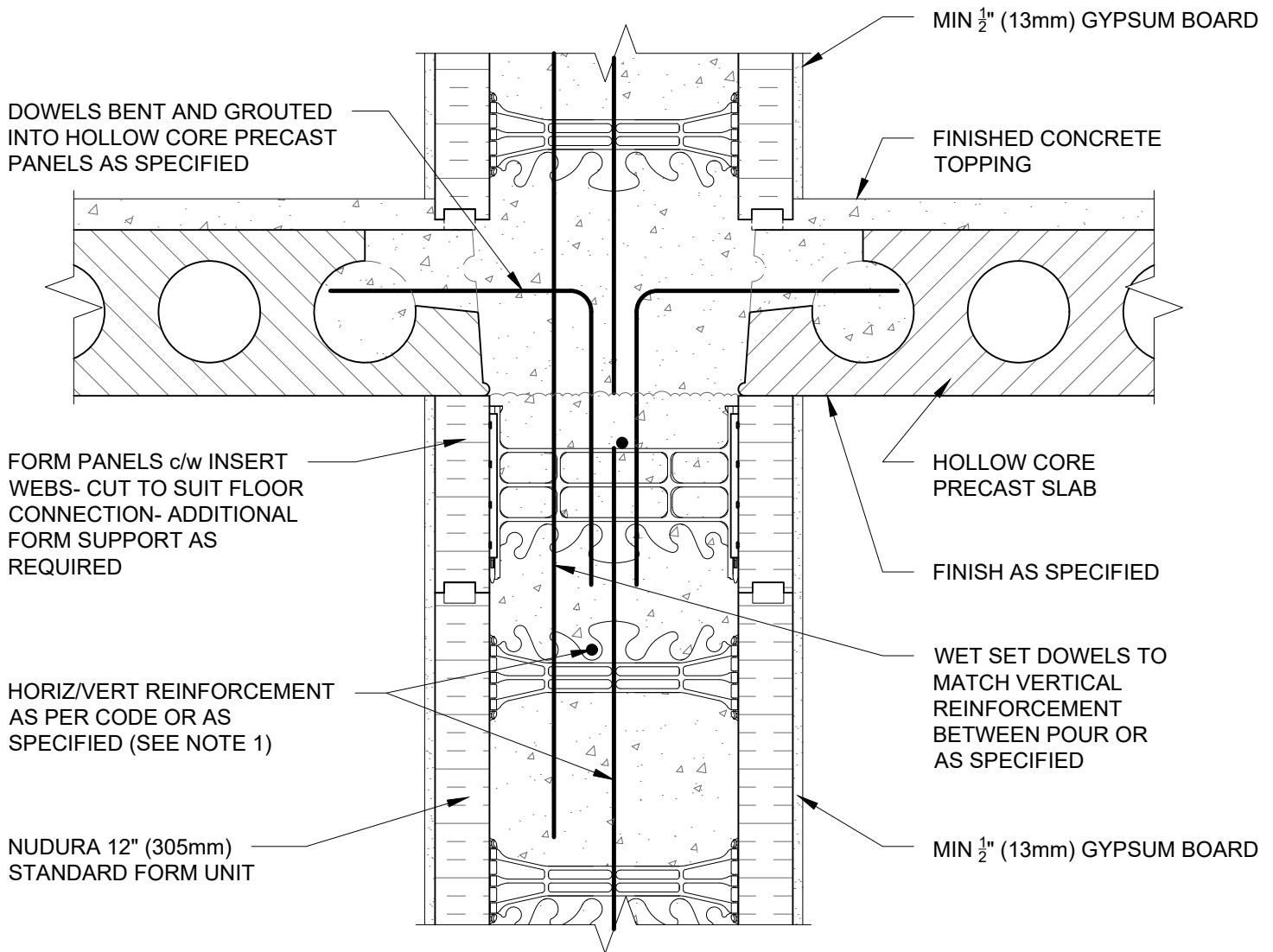
G12A01



Construction Products Group

www.tremcocpg.com





**NOTES:**

1) FOR OPTIMAL REINFORCEMENT PLACEMENT IN THE NUDURA FORM, SPACING OF HORIZONTAL REINFORCEMENT TO BE SPECIFIED AT 18" (457mm) O.C. AND VERTICAL REINFORCEMENT TO BE SPECIFIED AT MULTIPLES OF 8" (203mm) O.C. REFER TO NUDURA REINFORCEMENT PLACEMENT DETAILS.

*This detail is for general informational purposes only. The project design professional determines, in its sole discretion, whether this detail or a functionally equivalent detail is best suited for the project with respect to any architecture, engineering, and design requirements, including any local building code requirements. If this document is not reviewed and the product is not approved for use by a licensed design professional, the customer agrees that the detail may contain substantive flaws requiring correction, and hereby releases Tremco CPG Inc. from any and all liability related to the design and installation of the product. This detail is subject to change without notice. Contact Tremco to ensure you have the most recent version.*

**Non-Combustible Construction - Demising Wall Intermediate Floor Connections**



Nudura Technical Support: 866-468-6299  
International: +1 705-726-9499

Detail: Nudura 12" (305mm) Form Unit, Hollow Core Precast Slab,  
Non-Bearing Demising Wall

Drawn by: KS

Checked by: KS

Scale: 1:8

Revision #: 01

Revised by: KAB

Date: 3/13/2024

File Name:

G12A02



Construction Products Group

[www.tremcocpg.com](http://www.tremcocpg.com)

NUDURA 12" (305mm)  
STANDARD FORM UNIT

ALLOW FLOOR SLAB TO REST ON  
TO BEARING WALL CONCRETE

PROPRIETARY STEEL JOIST AND  
CONNECTION SHOWN BEYOND  
TO ALLOW FOR STAGGERING OF  
THE JOISTS

MIN ½" (13mm) GYPSUM BOARD

FORM PANELS c/w INSERT WEBS-  
CUT TO SUIT FLOOR CONNECTION-  
ADDITIONAL FORM SUPPORT AS  
REQUIRED

EPS FOAM REMOVED AT JOIST  
LOCATIONS ONLY TO ALLOW JOIST  
PLACEMENT

PROPRIETARY STEEL  
JOIST FLOOR SYSTEM

PROPRIETARY STEEL  
JOIST FLOOR SYSTEM

HORIZ/VERT REINFORCEMENT  
AS PER CODE OR AS SPECIFIED  
(SEE NOTE 1)

CEILING FINISH AS PER STEEL  
JOIST MANUFACTURERS  
SPECIFICATION  
(SEE NOTE 2)

WET SET DOWELS TO MATCH  
VERTICAL REINFORCEMENT  
BETWEEN POUR OR AS  
SPECIFIED

MIN ½" (13mm) GYPSUM BOARD

NOTES:

1) FOR OPTIMAL REINFORCEMENT PLACEMENT IN THE NUDURA FORM, SPACING OF HORIZONTAL REINFORCEMENT TO BE SPECIFIED AT 18" (457mm) O.C. AND VERTICAL REINFORCEMENT TO BE SPECIFIED AT MULTIPLES OF 8" (203mm) O.C. REFER TO NUDURA REINFORCEMENT PLACEMENT DETAILS.

2) WHERE GYPSUM BOARD IS REQUIRED TO COMPLETE FIRE RATED ASSEMBLY, EPS FOAM KERF CUT TO ENABLE CEILING FINISH TO PROVIDE THERMAL BARRIER CONTACT TO CONCRETE.

This detail is for general informational purposes only. The project design professional determines, in its sole discretion, whether this detail or a functionally equivalent detail is best suited for the project with respect to any architecture, engineering, and design requirements, including any local building code requirements. If this document is not reviewed and the product is not approved for use by a licensed design professional, the customer agrees that the detail may contain substantive flaws requiring correction, and hereby releases Tremco CPG Inc. from any and all liability related to the design and installation of the product. This detail is subject to change without notice. Contact Tremco to ensure you have the most recent version.

**Non-Combustible Construction - Demising Wall Intermediate Floor Connections**



Nudura Technical Support: 866-468-6299  
International: +1 705-726-9499

Detail: Nudura 12" (305mm) Form Unit, Proprietary Steel Joist Floor System,  
Bearing Demising Wall

Drawn by: KS

Checked by: KS

Scale: 1:8

Revision #: 01

Revised by: KAB

Date: 3/13/2024

File Name:

G12B01



Construction Products Group

[www.tremcocpg.com](http://www.tremcocpg.com)

NUDURA 12" (305mm)  
STANDARD FORM UNIT

ALLOW FLOOR SLAB TO REST ON  
TO BEARING WALL CONCRETE

MIN ½" (13mm) GYPSUM BOARD

FORM PANELS c/w INSERT  
WEBS- CUT TO SUIT FLOOR  
CONNECTION- ADDITIONAL  
FORM SUPPORT AS REQUIRED

PROPRIETARY STEEL JOIST  
FLOOR SYSTEM

PROPRIETARY STEEL JOIST  
FLOOR SYSTEM

HORIZ/VERT REINFORCEMENT  
AS PER CODE OR AS  
SPECIFIED (SEE NOTE 1)

CEILING FINISH AS PER STEEL JOIST  
MANUFACTURERS SPECIFICATION  
(SEE NOTE 2)

WET SET DOWELS TO MATCH  
VERTICAL REINFORCEMENT  
BETWEEN POUR OR AS  
SPECIFIED

MIN ½" (13mm) GYPSUM BOARD

#### NOTES:

1) FOR OPTIMAL REINFORCEMENT PLACEMENT IN THE NUDURA FORM, SPACING OF HORIZONTAL REINFORCEMENT TO BE SPECIFIED AT 18" (457mm) O.C. AND VERTICAL REINFORCEMENT TO BE SPECIFIED AT MULTIPLES OF 8" (203mm) O.C. REFER TO NUDURA REINFORCEMENT PLACEMENT DETAILS.

2) WHERE GYPSUM BOARD IS REQUIRED TO COMPLETE FIRE RATED ASSEMBLY, EPS FOAM KERF CUT TO ENABLE CEILING FINISH TO PROVIDE THERMAL BARRIER CONTACT TO CONCRETE.

This detail is for general informational purposes only. The project design professional determines, in its sole discretion, whether this detail or a functionally equivalent detail is best suited for the project with respect to any architecture, engineering, and design requirements, including any local building code requirements. If this document is not reviewed and the product is not approved for use by a licensed design professional, the customer agrees that the detail may contain substantive flaws requiring correction, and hereby releases Tremco CPG Inc. from any and all liability related to the design and installation of the product. This detail is subject to change without notice. Contact Tremco to ensure you have the most recent version.

#### Non-Combustible Construction - Demising Wall Intermediate Floor Connections



Nudura Technical Support: 866-468-6299  
International: +1 705-726-9499

Detail: Nudura 12" (305mm) Form Unit, Proprietary Steel Joist Floor System,  
Non-Bearing Demising Wall

Drawn by: KS

Checked by: KS

Scale: 1:8

Revision #: 01

Revised by: KAB

Date: 3/13/2024

File Name:

G12B02



Construction Products Group

[www.tremcocpg.com](http://www.tremcocpg.com)

FORM PANELS c/w INSERT WEBS-  
CUT TO SUIT FLOOR CONNECTION-  
ADDITIONAL FORM SUPPORT AS  
REQUIRED

U BRACKET ANCHOR INSERT

GYPSUM BOARD FINISHED/FIRE  
STOP INSTALLED AT JOISTS AS  
PER CODE

COMPOSITE STEEL DECK-SLAB  
AND REINFORCEMENT AS  
SPECIFIED

OWSJ AND CONNECTION SHOWN  
BEYOND TO ALLOW FOR  
STAGGERING OF JOISTS

OWSJ

WET SET DOWELS FIELD BENT  
INTO SLAB AS SPECIFIED

INTERIOR INSULATION  
REMOVED AT JOIST  
LOCATIONS

WET SET DOWELS  
TO MATCH VERTICAL  
REINFORCEMENT  
BETWEEN POUR OR AS  
SPECIFIED

MIN  $\frac{1}{2}$ " (13mm) GYPSUM BOARD

HORIZ/VERT REINFORCEMENT  
AS PER CODE OR AS SPECIFIED  
(SEE NOTE 1)

NUDURA 12" (305mm)  
STANDARD FORM UNIT

#### NOTES:

1) FOR OPTIMAL REINFORCEMENT PLACEMENT IN THE NUDURA FORM,  
SPACING OF HORIZONTAL REINFORCEMENT TO BE SPECIFIED AT 18"  
(457mm) O.C. AND VERTICAL REINFORCEMENT TO BE SPECIFIED AT  
MULTIPLES OF 8" (203mm) O.C. REFER TO NUDURA REINFORCEMENT  
PLACEMENT DETAILS.

*This detail is for general informational purposes only. The project design professional determines, in its sole discretion, whether this detail or a functionally equivalent detail is best suited for the project with respect to any architecture, engineering, and design requirements, including any local building code requirements. If this document is not reviewed and the product is not approved for use by a licensed design professional, the customer agrees that the detail may contain substantive flaws requiring correction, and hereby releases Tremco CPG Inc. from any and all liability related to the design and installation of the product. This detail is subject to change without notice. Contact Tremco to ensure you have the most recent version.*

#### Non-Combustible Construction - Demising Wall Intermediate Floor Connections



Nudura Technical Support: 866-468-6299  
International: +1 705-726-9499

Detail: Nudura 12" (305mm) Form Unit, Composite Steel Deck-Slab, Steel Joist on  
Bearing Demising Wall

Drawn by: KS

Checked by: KS

Scale: 1:8

Revision #: 01

Revised by: KAB

Date: 3/13/2024

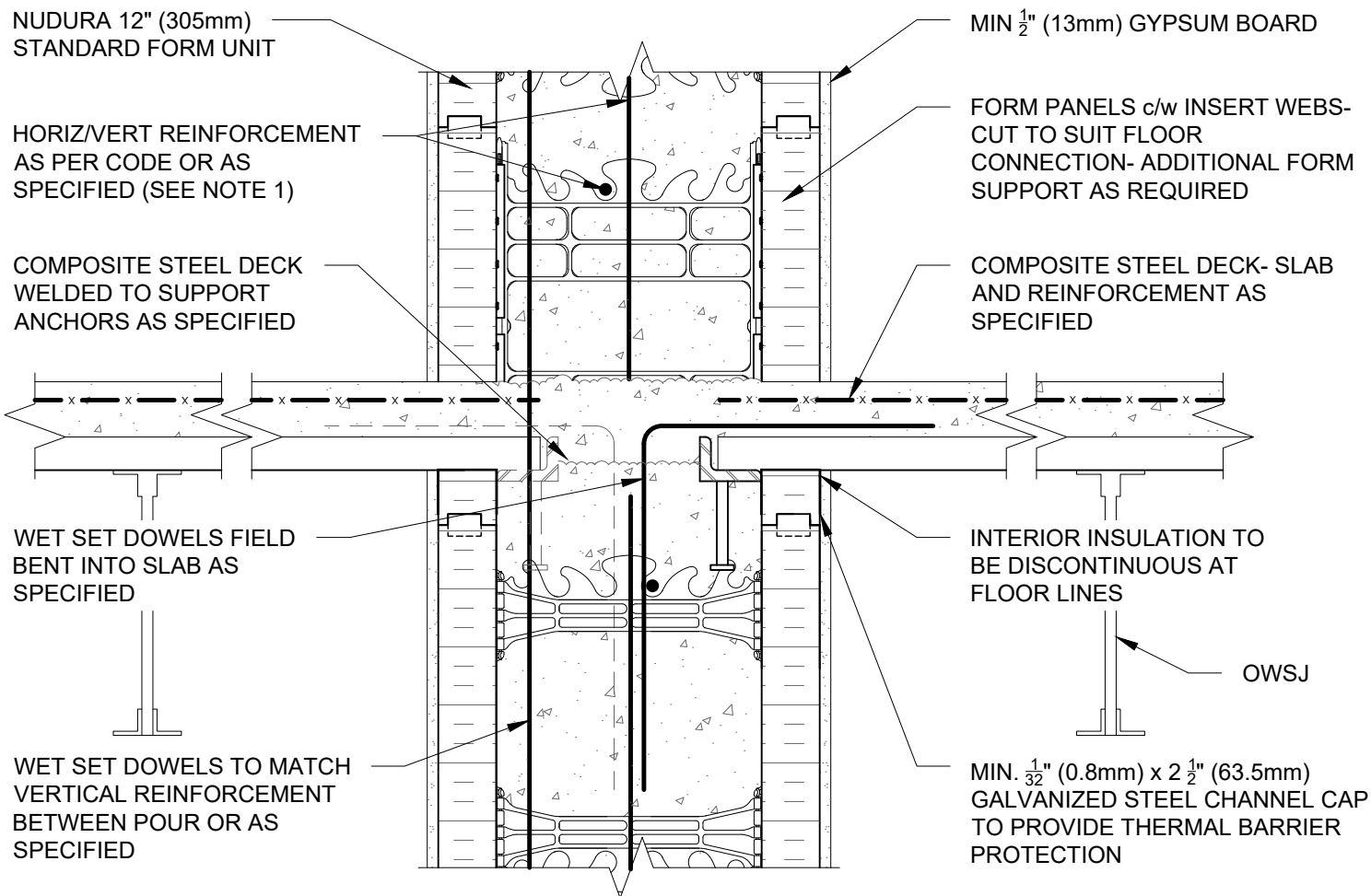
File Name:

G12C01



Construction Products Group

www.tremcocpg.com



**NOTES:**

1) FOR OPTIMAL REINFORCEMENT PLACEMENT IN THE NUDURA FORM, SPACING OF HORIZONTAL REINFORCEMENT TO BE SPECIFIED AT 18" (457mm) O.C. AND VERTICAL REINFORCEMENT TO BE SPECIFIED AT MULTIPLES OF 8" (203mm) O.C. REFER TO NUDURA REINFORCEMENT PLACEMENT DETAILS.

*This detail is for general informational purposes only. The project design professional determines, in its sole discretion, whether this detail or a functionally equivalent detail is best suited for the project with respect to any architecture, engineering, and design requirements, including any local building code requirements. If this document is not reviewed and the product is not approved for use by a licensed design professional, the customer agrees that the detail may contain substantive flaws requiring correction, and hereby releases Tremco CPG Inc. from any and all liability related to the design and installation of the product. This detail is subject to change without notice. Contact Tremco to ensure you have the most recent version.*

**Non-Combustible Construction - Demising Wall Intermediate Floor Connections**



Nudura Technical Support: 866-468-6299  
International: +1 705-726-9499

Detail: Nudura 12" (305mm) Form Unit, Composite Steel Deck-Slab, Steel Joist on Non-Bearing Demising Wall

Drawn by: KS

Checked by: KS

Scale: 1:8

Revision #: 01

Revised by: KAB

Date: 3/13/2024

File Name:

G12C02



Construction Products Group

[www.tremcocpg.com](http://www.tremcocpg.com)

NUDURA 12" (305mm)  
STANDARD FORM UNIT

MIN  $\frac{1}{2}$ " (13mm) GYPSUM BOARD

HORIZ/VERT REINFORCEMENT  
AS PER CODE OR AS  
SPECIFIED (SEE NOTE 1)

INSULATED CONCRETE  
FLOOR FORM INSTALLED AS  
PER MANUFACTURERS  
SPECIFICATIONS

WET SET DOWELS FIELD  
BENT INTO SLAB AS  
SPECIFIED

THERMAL BARRIER AS PER  
FLOOR MANUFACTURERS  
SPECIFICATION

WET SET DOWELS TO MATCH  
VERTICAL REINFORCEMENT  
BETWEEN POUR OR AS  
SPECIFIED

TEMPORARY STEEL ANGLE

NUDURA 12" (305mm)  
HEIGHT ADJUSTER TIE

# NOTES:

1) FOR OPTIMAL REINFORCEMENT PLACEMENT IN THE NUDURA FORM, SPACING OF HORIZONTAL REINFORCEMENT TO BE SPECIFIED AT 18" (457mm) O.C. AND VERTICAL REINFORCEMENT TO BE SPECIFIED AT MULTIPLES OF 8" (203mm) O.C. REFER TO NUDURA REINFORCEMENT PLACEMENT DETAILS.

*This detail is for general informational purposes only. The project design professional determines, in its sole discretion, whether this detail or a functionally equivalent detail is best suited for the project with respect to any architecture, engineering, and design requirements, including any local building code requirements. If this document is not reviewed and the product is not approved for use by a licensed design professional, the customer agrees that the detail may contain substantive flaws requiring correction, and hereby releases Tremco CPG Inc. from any and all liability related to the design and installation of the product. This detail is subject to change without notice. Contact Tremco to ensure you have the most recent version.*

## Non-Combustible Construction - Demising Wall Intermediate Floor Connections



Nudura Technical Support: 866-468-6299  
International: +1 705-726-9499

Detail: Nudura 12" (305mm) Form Unit, ICFS Connection, ICFS Resting on Form, Bearing Demising Wall

Drawn by: KS

Checked by: KS

Scale: 1:8

Revision #: 01

Revised by: KAB

Date: 3/13/2024

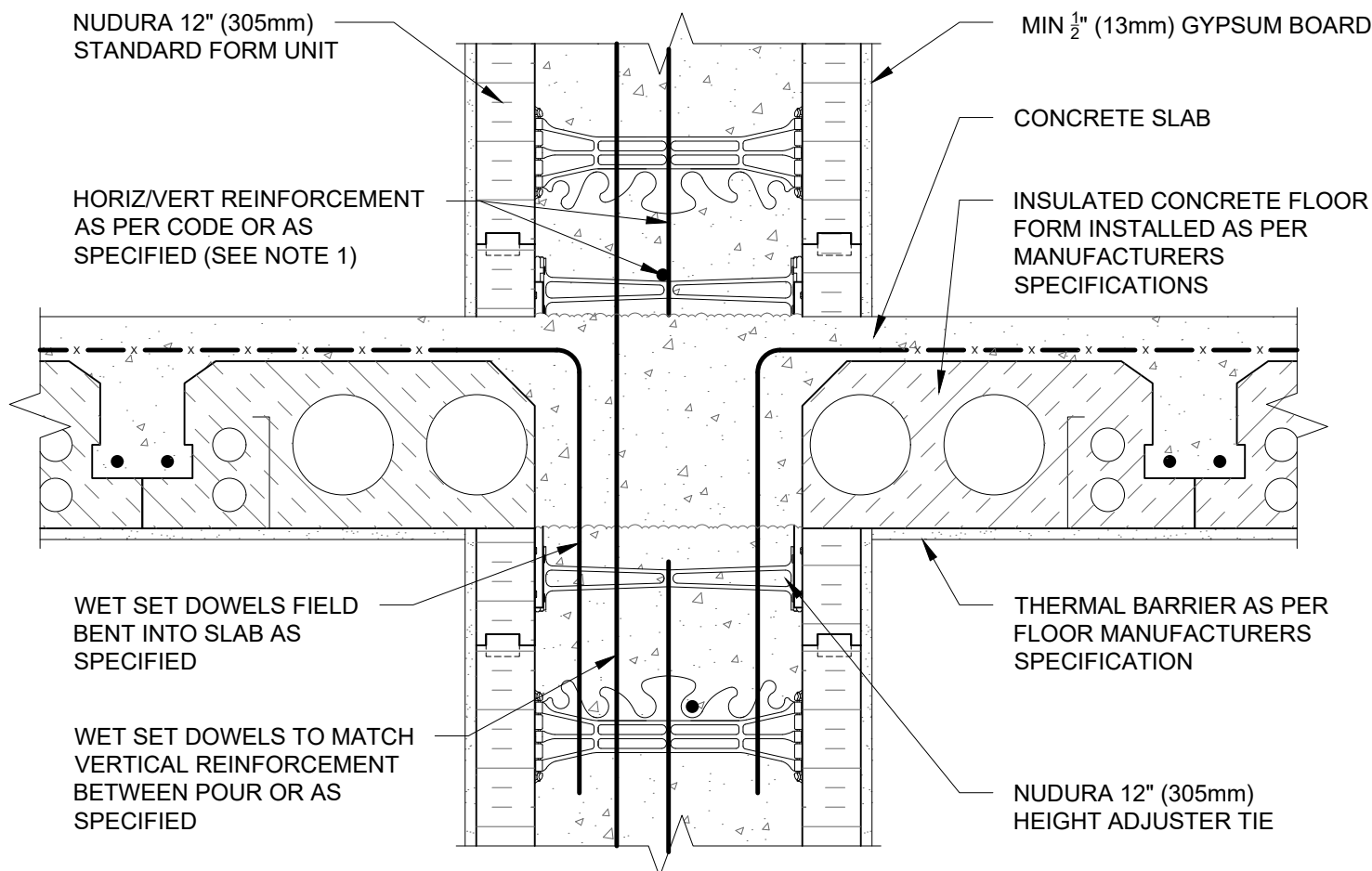
[www.tremcocpg.com](http://www.tremcocpg.com)

File Name:

G12D01



Construction Products Group



# NOTES:

1) FOR OPTIMAL REINFORCEMENT PLACEMENT IN THE NUDURA FORM, SPACING OF HORIZONTAL REINFORCEMENT TO BE SPECIFIED AT 18" (457mm) O.C. AND VERTICAL REINFORCEMENT TO BE SPECIFIED AT MULTIPLES OF 8" (203mm) O.C. REFER TO NUDURA REINFORCEMENT PLACEMENT DETAILS.

*This detail is for general informational purposes only. The project design professional determines, in its sole discretion, whether this detail or a functionally equivalent detail is best suited for the project with respect to any architecture, engineering, and design requirements, including any local building code requirements. If this document is not reviewed and the product is not approved for use by a licensed design professional, the customer agrees that the detail may contain substantive flaws requiring correction, and hereby releases Tremco CPG Inc. from any and all liability related to the design and installation of the product. This detail is subject to change without notice. Contact Tremco to ensure you have the most recent version.*

## Non-Combustible Construction - Demising Wall Intermediate Floor Connections



Nudura Technical Support: 866-468-6299  
International: +1 705-726-9499

Detail: Nudura 12" (305mm) Form Unit, ICFS Connection, ICFS Resting on Form, Non-Bearing Demising Wall

Drawn by: KS

Checked by: KS

Scale: 1:8

Revision #: 01

Revised by: KAB

Date: 3/13/2024

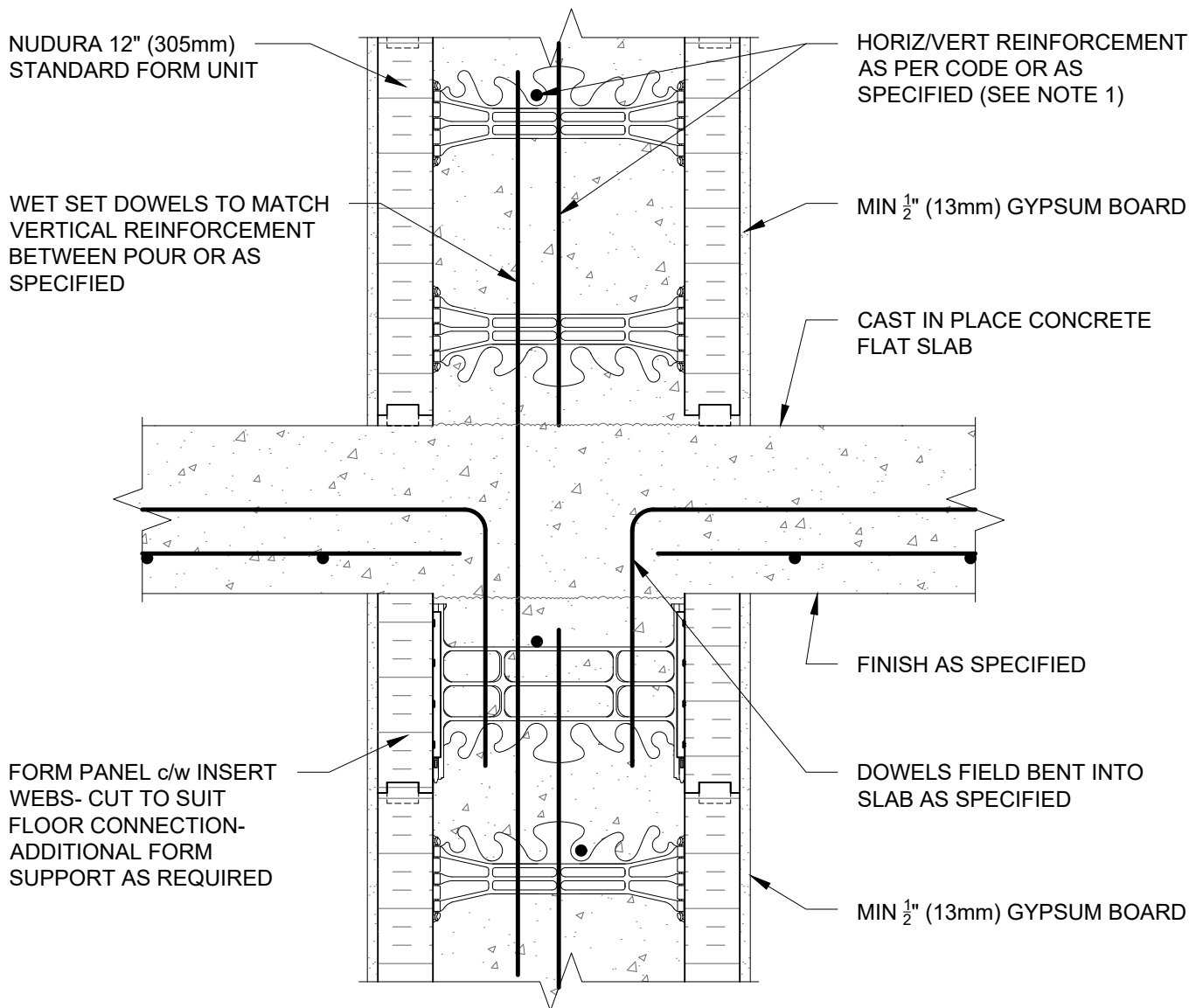
[www.tremcocpg.com](http://www.tremcocpg.com)

File Name:

G12D02



Construction Products Group



**NOTES:**

1) FOR OPTIMAL REINFORCEMENT PLACEMENT IN THE NUDURA FORM, SPACING OF HORIZONTAL REINFORCEMENT TO BE SPECIFIED AT 18" (457mm) O.C. AND VERTICAL REINFORCEMENT TO BE SPECIFIED AT MULTIPLES OF 8" (203mm) O.C. REFER TO NUDURA REINFORCEMENT PLACEMENT DETAILS.

*This detail is for general informational purposes only. The project design professional determines, in its sole discretion, whether this detail or a functionally equivalent detail is best suited for the project with respect to any architecture, engineering, and design requirements, including any local building code requirements. If this document is not reviewed and the product is not approved for use by a licensed design professional, the customer agrees that the detail may contain substantive flaws requiring correction, and hereby releases Tremco CPG Inc. from any and all liability related to the design and installation of the product. This detail is subject to change without notice. Contact Tremco to ensure you have the most recent version.*

**Non-Combustible Construction - Demising Wall Intermediate Floor Connections**



Nudura Technical Support: 866-468-6299  
International: +1 705-726-9499

Detail: Nudura 12" (305mm) Form Unit, Concrete Flat Plate, Bearing Demising Wall

Drawn by: KS

Checked by: KS

Scale: 1:8

Revision #: 01

Revised by: KAB

Date: 3/13/2024

[www.tremcocpg.com](http://www.tremcocpg.com)

File Name:

G12E01



Construction Products Group