

NOTES:

1) FOR OPTIMAL REINFORCEMENT PLACEMENT IN THE NUDURA FORM, SPACING OF HORIZONTAL REINFORCEMENT TO BE SPECIFIED AT 18" (457mm) O.C. AND VERTICAL REINFORCEMENT TO BE SPECIFIED AT MULTIPLES OF 8" (203mm) O.C. REFER TO NUDURA REINFORCEMENT PLACEMENT DETAILS.

2) AIR BARRIER/DRAINAGE FLASHINGS TO BE INSTALLED AROUND COMPLETE OPENING PERIMETER AS PER TREMCO/NUDURA APPLICATION INSTRUCTIONS OR AS DETAILED BY LOCAL APPLICABLE CODES (CODE GOVERNS)

This detail is for general informational purposes, only. The project design professional determines, in its sole discretion, whether this detail or a functionally equivalent detail is best suited for the project with respect to any architecture, engineering, and design requirements, including any local building code requirements. If this document is not reviewed and the product is not approved for use by a licensed design professional, the customer agrees that the detail may contain substantive flaws requiring correction, and hereby releases Tremco CPG Inc. and Prebuck, LLC from any and all liability related to the design and installation of the product. This detail is subject to change without notice. Contact Tremco and Prebuck to ensure you have the most recent version.

Combustible Construction - Doors and Windows



Nudura Technical Support: 866-468-6299
International: +1 705-726-9499

Detail: Nudura 6" (152mm) Form Unit, Window Head/Sill Detail,
Brick Veneer Finish, Inset Wood Rough Buck

Drawn by: KS

Checked by: KS

Scale: 1:8

Revision #: 01

Revised by: KAB

Date: 3/13/2024

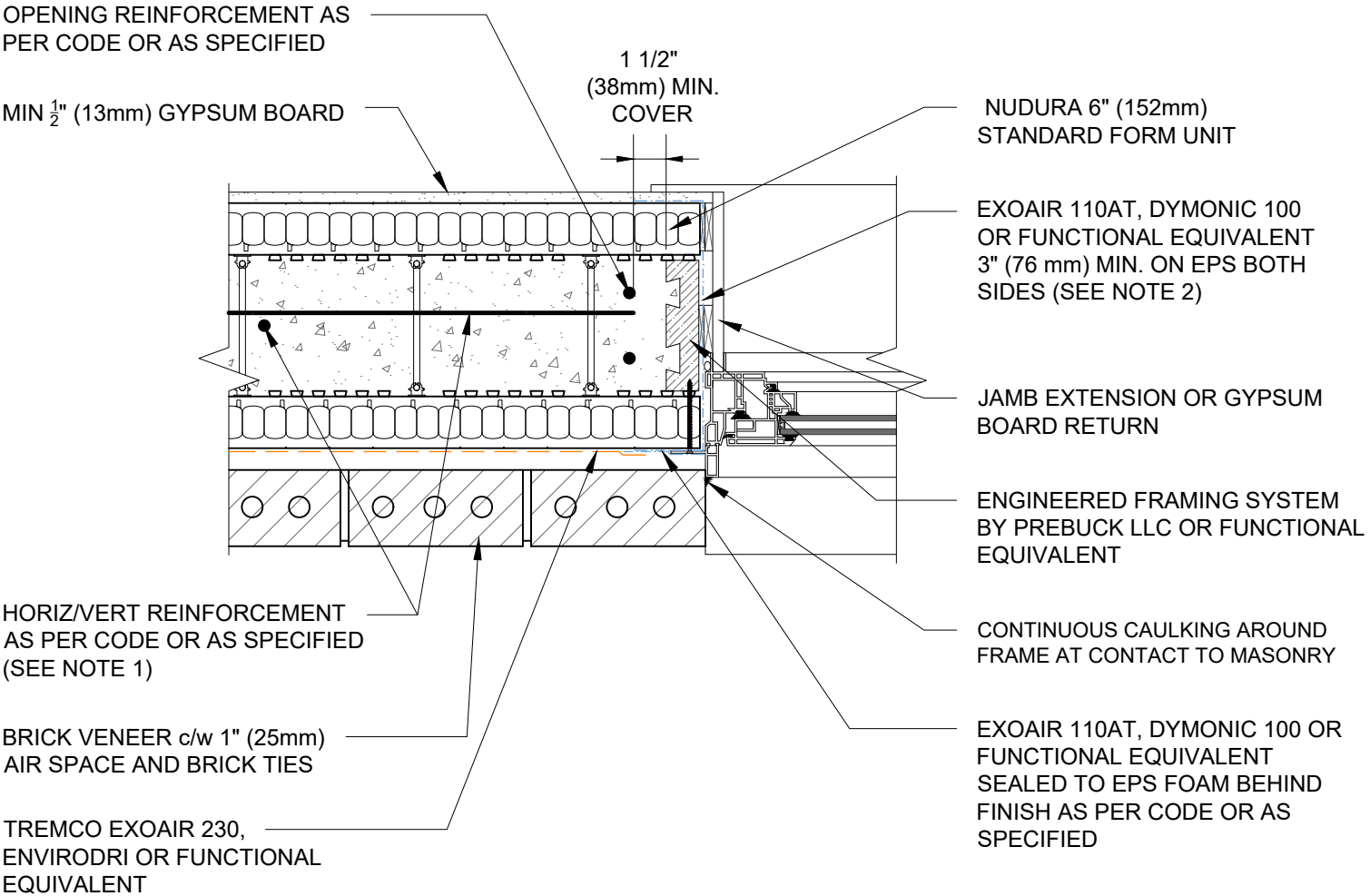
File Name:

E6A01



Construction Products Group

www.tremcocpg.com



NOTES:

1) FOR OPTIMAL REINFORCEMENT PLACEMENT IN THE NUDURA FORM, SPACING OF HORIZONTAL REINFORCEMENT TO BE SPECIFIED AT 18" (457mm) O.C. AND VERTICAL REINFORCEMENT TO BE SPECIFIED AT MULTIPLES OF 8" (203mm) O.C. REFER TO NUDURA REINFORCEMENT PLACEMENT DETAILS.

2)AIR BARRIER/DRAINAGE FLASHINGS TO BE INSTALLED AROUND COMPLETE OPENING PERIMETER AS PER TREMCO/NUDURA APPLICATION INSTRUCTIONS OR AS DETAILED BY LOCAL APPLICABLE CODES (CODE GOVERNS)

This detail is for general informational purposes, only. The project design professional determines, in its sole discretion, whether this detail or a functionally equivalent detail is best suited for the project with respect to any architecture, engineering, and design requirements, including any local building code requirements. If this document is not reviewed and the product is not approved for use by a licensed design professional, the customer agrees that the detail may contain substantive flaws requiring correction, and hereby releases Tremco CPG Inc. and Prebuck, LLC from any and all liability related to the design and installation of the product. This detail is subject to change without notice. Contact Tremco and Prebuck to ensure you have the most recent version.

Combustible Construction - Doors and Windows

Detail: Nudura 6" (152mm) Form Unit, Window Jamb Detail, Inset Wood Rough Buck, Brick Veneer Finish

File Name:

Drawn by: KS

Checked by: KS

Scale: 1:8

E6A02

Revision #: 01

Revised by: KAB

Date: 3/13/2024

www.tremcocpg.com



Nudura Technical Support: 866-468-6299
International: +1 705-726-9499



Construction Products Group

BRICK VENEER w/ 1" (25mm)
CAVITY AND BRICK TIES AS
PER CODE

TREMCO EXOAIR 230,
ENVIRODRI OR FUNCTIONAL
EQUIVALENT

NUDURA 6" (152mm) STANDARD
FORM UNIT

WEEP HOLES AND THROUGH
WALL FLASHING AS PER
CODE OR AS SPECIFIED

STEEL LINTEL

CONTINUOUS CAULKING
AROUND FRAME AT
CONTACT TO MASONRY

SILL PAN (OPTIONAL) INSTALL
WINDOW UNIT AND
ASSOCIATED FLASHINGS PER
MANUFACTURER'S
RECOMMENDATIONS, CODE
REQUIREMENTS AND
PROJECT DOCUMENTS

OPENING REINFORCEMENT
AS PER CODE OR AS
SPECIFIED

MIN $\frac{1}{2}$ " (13mm) GYPSUM BOARD

HORIZ/VERT REINFORCEMENT
AS PER CODE OR AS
SPECIFIED (SEE NOTE 1)

LINTEL REINFORCEMENT AS
PER CODE OR AS SPECIFIED

EXOAIR 110AT, DYMONIC 100 OR
FUNCTIONAL EQUIVALENT 3" (76mm)
MIN. ON EPS BOTH SIDES (SEE NOTE 2)

1 1/2"
(38mm) MIN.
COVER

ENGINEERED FRAMING SYSTEM
BY PREBUCK LLC OR FUNCTIONAL
EQUIVALENT

SILL EXTENSION TRIM

CUTOUT FOR CONCRETE
PLACEMENT AND
CONSOLIDATION

EXOAIR 110AT, DYMONIC 100 OR
FUNCTIONAL EQUIVALENT,
LAPPED & SEALED TO WINDOW
FRAME (OR SILL PAN) (SEE NOTE
2)

MIN $\frac{1}{2}$ " (13mm) GYPSUM BOARD

NOTES:

1) FOR OPTIMAL REINFORCEMENT PLACEMENT IN THE NUDURA FORM,
SPACING OF HORIZONTAL REINFORCEMENT TO BE SPECIFIED AT 18"
(457mm) O.C. AND VERTICAL REINFORCEMENT TO BE SPECIFIED AT
MULTIPLES OF 8" (203mm) O.C. REFER TO NUDURA REINFORCEMENT
PLACEMENT DETAILS.

2) AIR BARRIER/DRAINAGE FLASHINGS TO BE INSTALLED AROUND
COMPLETE OPENING PERIMETER AS PER TREMCO/NUDURA
APPLICATION INSTRUCTIONS OR AS DETAILED BY LOCAL APPLICABLE
CODES (CODE GOVERNS)

This detail is for general informational purposes only. The project design professional determines, in its sole discretion, whether this detail or a functionally equivalent detail is best suited for the project with respect to any architecture, engineering, and design requirements, including any local building code requirements. If this document is not reviewed and the product is not approved for use by a licensed design professional, the customer agrees that the detail may contain substantive flaws requiring correction, and hereby releases Tremco CPG Inc. and Prebuck, LLC from any and all liability related to the design and installation of the product. This detail is subject to change without notice. Contact Tremco and Prebuck to ensure you have the most recent version.

Combustible Construction - Doors and Windows



Nudura Technical Support: 866-468-6299
International: +1 705-726-9499

Detail: Nudura 6" (152mm) Form Unit, Window Head/Sill Detail,
Brick Veneer Finish, Partial Depth Wood Rough Buck

Drawn by: KS

Checked by: KS

Scale: 1:8

Revision #: 01

Revised by: KAB

Date: 3/13/2024

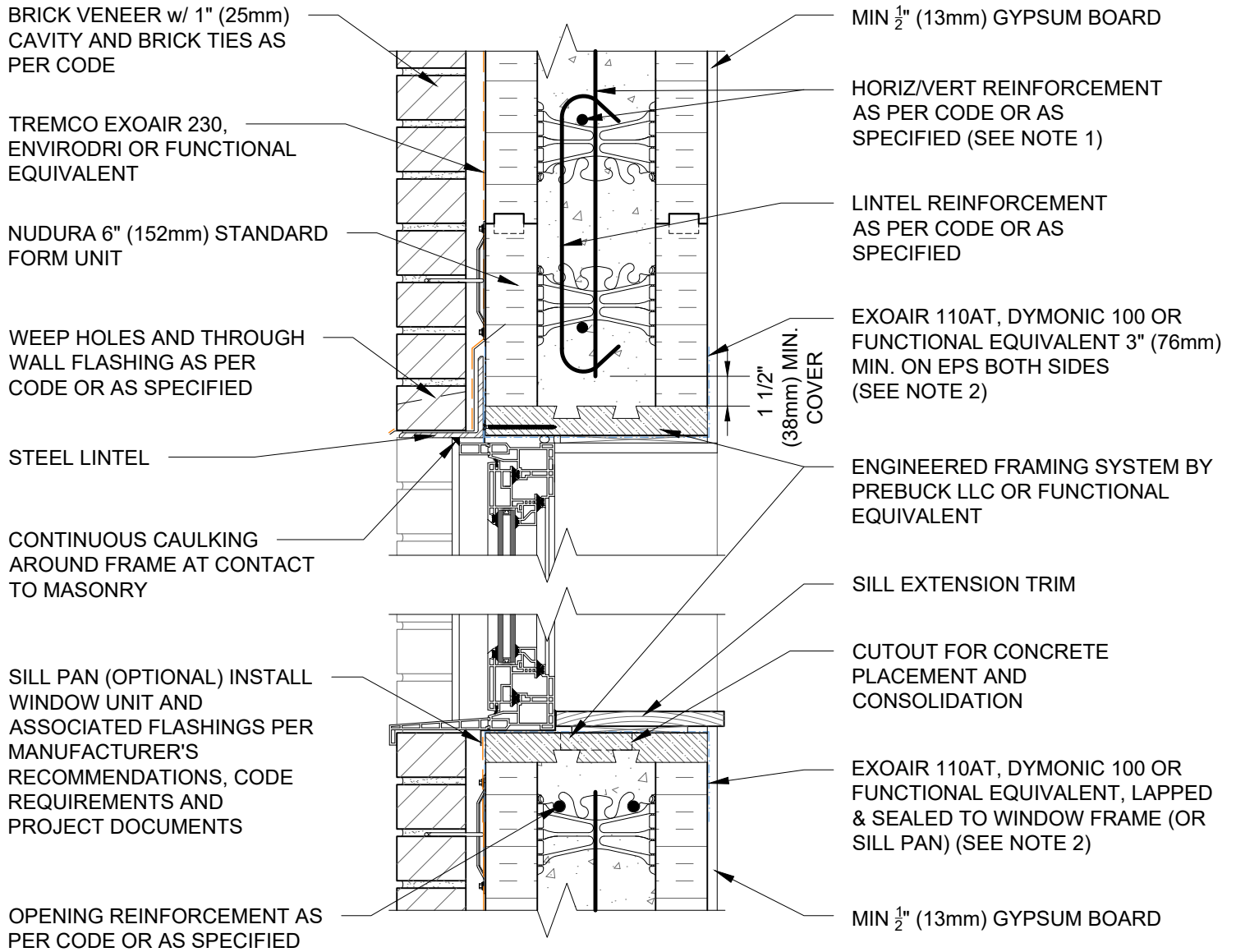
File Name:

E6A03



Construction Products Group

www.tremcocpg.com



NOTES:

1) FOR OPTIMAL REINFORCEMENT PLACEMENT IN THE NUDURA FORM, SPACING OF HORIZONTAL REINFORCEMENT TO BE SPECIFIED AT 18" (457mm) O.C. AND VERTICAL REINFORCEMENT TO BE SPECIFIED AT MULTIPLES OF 8" (203mm) O.C. REFER TO NUDURA REINFORCEMENT PLACEMENT DETAILS.

2) AIR BARRIER/DRAINAGE FLASHINGS TO BE INSTALLED AROUND COMPLETE OPENING PERIMETER AS PER TREMCO/NUDURA APPLICATION INSTRUCTIONS OR AS DETAILED BY LOCAL APPLICABLE CODES (CODE GOVERNS)

This detail is for general informational purposes only. The project design professional determines, in its sole discretion, whether this detail or a functionally equivalent detail is best suited for the project with respect to any architecture, engineering, and design requirements, including any local building code requirements. If this document is not reviewed and the product is not approved for use by a licensed design professional, the customer agrees that the detail may contain substantive flaws requiring correction, and hereby releases Tremco CPG Inc. and Prebuck, LLC from any and all liability related to the design and installation of the product. This detail is subject to change without notice. Contact Tremco and Prebuck to ensure you have the most recent version.

Combustible Construction - Doors and Windows



Nudura Technical Support: 866-468-6299
International: +1 705-726-9499

Detail: Nudura 6" (152mm) Form Unit, Window Head/Sill Detail,
Brick Veneer Finish, Full Depth Wood Rough Buck

Drawn by: KS

Checked by: KS

Scale: 1:8

Revision #: 01

Revised by: KAB

Date: 3/13/2024

File Name:

E6A04



Construction Products Group

www.tremcocpg.com

OPENING REINFORCEMENT AS
PER CODE OR AS SPECIFIED

MIN $\frac{1}{2}$ " (13mm) GYPSUM BOARD

1 1/2"
(38mm) MIN.
COVER

NUDURA 6" (152mm)
STANDARD FORM UNIT

EXOAIR 110AT, DYMONIC 100
OR FUNCTIONAL EQUIVALENT
3" (76 mm) MIN. ON EPS BOTH
SIDES (SEE NOTE 2)

JAMB EXTENSION OR GYPSUM
BOARD RETURN

ENGINEERED FRAMING SYSTEM
BY PREBUCK LLC OR FUNCTIONAL
EQUIVALENT

CONTINUOUS CAULKING AROUND
FRAME AT CONTACT TO MASONRY

HORIZ/VERT REINFORCEMENT
AS PER CODE OR AS SPECIFIED
(SEE NOTE 1)

BRICK VENEER c/w 1" (25mm)
AIR SPACE AND BRICK TIES

TREMCO EXOAIR 230,
ENVIRODRI OR FUNCTIONAL
EQUIVALENT

EXOAIR 110AT, DYMONIC 100 OR
FUNCTIONAL EQUIVALENT
SEALED TO EPS FOAM BEHIND
FINISH AS PER CODE OR AS
SPECIFIED

NOTES:

1) FOR OPTIMAL REINFORCEMENT PLACEMENT IN THE NUDURA FORM,
SPACING OF HORIZONTAL REINFORCEMENT TO BE SPECIFIED AT 18"
(457mm) O.C. AND VERTICAL REINFORCEMENT TO BE SPECIFIED AT
MULTIPLES OF 8" (203mm) O.C. REFER TO NUDURA REINFORCEMENT
PLACEMENT DETAILS.

2) AIR BARRIER/DRAINAGE FLASHINGS TO BE INSTALLED AROUND
COMPLETE OPENING PERIMETER AS PER TREMCO/NUDURA
APPLICATION INSTRUCTIONS OR AS DETAILED BY LOCAL APPLICABLE
CODES (CODE GOVERNS)

This detail is for general informational purposes, only. The project design professional determines, in its sole discretion, whether this detail or a functionally equivalent detail is best suited for the project with respect to any architecture, engineering, and design requirements, including any local building code requirements. If this document is not reviewed and the product is not approved for use by a licensed design professional, the customer agrees that the detail may contain substantive flaws requiring correction, and hereby releases Tremco CPG Inc. and Prebuck, LLC from any and all liability related to the design and installation of the product. This detail is subject to change without notice. Contact Tremco and Prebuck to ensure you have the most recent version.

Combustible Construction - Doors and Windows



Nudura Technical Support: 866-468-6299
International: +1 705-726-9499

Detail: Nudura 6" (152mm) Form Unit, Window Jamb Detail, Partial Depth
Wood Rough Buck, Brick Veneer Finish

Drawn by: KS

Checked by: KS

Scale: 1:8

Revision #: 01

Revised by: KAB

Date: 3/13/2024

File Name:

E6A05



Construction Products Group

www.tremcocpg.com

OPENING REINFORCEMENT AS
PER CODE OR AS SPECIFIED

MIN $\frac{1}{2}$ " (13mm) GYPSUM BOARD

1 1/2"
(38mm) MIN.
COVER

NUDURA 6" (152mm)
STANDARD FORM UNIT

EXOAIR 110AT, DYMONIC 100
OR FUNCTIONAL EQUIVALENT
3" (76 mm) MIN. ON EPS BOTH
SIDES (SEE NOTE 2)

JAMB EXTENSION OR
GYPSUM BOARD RETURN

ENGINEERED FRAMING SYSTEM
BY PREBUCK LLC OR FUNCTIONAL
EQUIVALENT

HORIZ/VERT REINFORCEMENT
AS PER CODE OR AS SPECIFIED
(SEE NOTE 1)

BRICK VENEER c/w 1" (25mm)
AIR SPACE AND BRICK TIES

TREMCO EXOAIR 230,
ENVIRODRI OR FUNCTIONAL
EQUIVALENT

CONTINUOUS CAULKING AROUND
FRAME AT CONTACT TO MASONRY

EXOAIR 110AT, DYMONIC 100 OR
FUNCTIONAL EQUIVALENT
SEALED TO EPS FOAM BEHIND
FINISH AS PER CODE OR AS
SPECIFIED

NOTES:

1) FOR OPTIMAL REINFORCEMENT PLACEMENT IN THE NUDURA FORM,
SPACING OF HORIZONTAL REINFORCEMENT TO BE SPECIFIED AT 18"
(457mm) O.C. AND VERTICAL REINFORCEMENT TO BE SPECIFIED AT
MULTIPLES OF 8" (203mm) O.C. REFER TO NUDURA REINFORCEMENT
PLACEMENT DETAILS.

2) AIR BARRIER/DRAINAGE FLASHINGS TO BE INSTALLED AROUND
COMPLETE OPENING PERIMETER AS PER TREMCO/NUDURA
APPLICATION INSTRUCTIONS OR AS DETAILED BY LOCAL APPLICABLE
CODES (CODE GOVERNS)

This detail is for general informational purposes, only. The project design professional determines, in its sole discretion, whether this detail or a functionally equivalent detail is best suited for the project with respect to any architecture, engineering, and design requirements, including any local building code requirements. If this document is not reviewed and the product is not approved for use by a licensed design professional, the customer agrees that the detail may contain substantive flaws requiring correction, and hereby releases Tremco CPG Inc. and Prebuck, LLC from any and all liability related to the design and installation of the product. This detail is subject to change without notice. Contact Tremco and Prebuck to ensure you have the most recent version.

Combustible Construction - Doors and Windows



Nudura Technical Support: 866-468-6299
International: +1 705-726-9499

Detail: Nudura 6" (152mm) Form Unit, Window Jamb Detail, Full Depth
Wood Rough Buck, Brick Veneer Finish

Drawn by: KS

Checked by: KS

Scale: 1:8

Revision #: 01

Revised by: KAB

Date: 3/13/2024

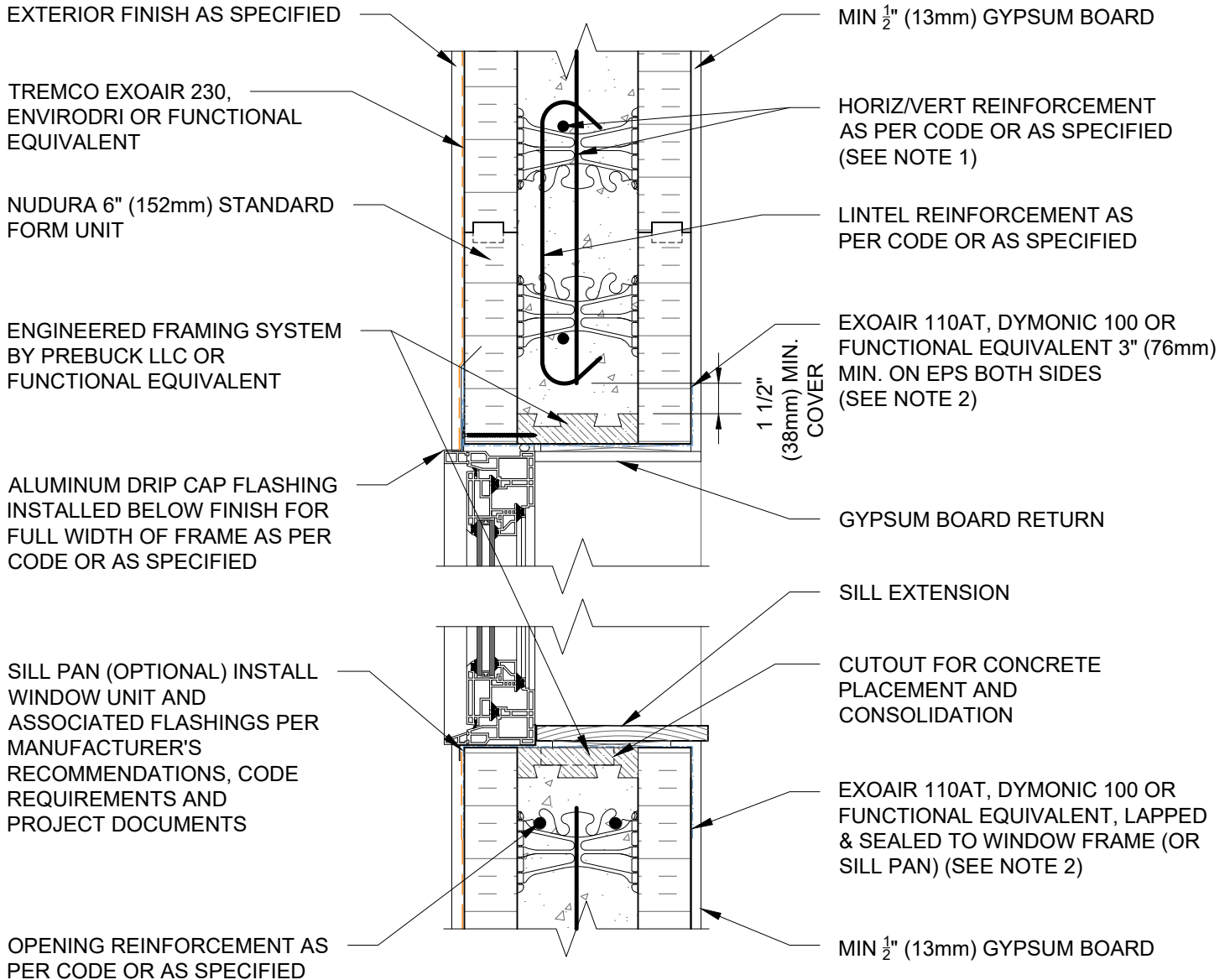
File Name:

E6A06



Construction Products Group

www.tremcocpg.com



NOTES:

1) FOR OPTIMAL REINFORCEMENT PLACEMENT IN THE NUDURA FORM, SPACING OF HORIZONTAL REINFORCEMENT TO BE SPECIFIED AT 18" (457mm) O.C. AND VERTICAL REINFORCEMENT TO BE SPECIFIED AT MULTIPLES OF 8" (203mm) O.C. REFER TO NUDURA REINFORCEMENT PLACEMENT DETAILS.

2) AIR BARRIER/DRAINAGE FLASHINGS TO BE INSTALLED AROUND COMPLETE OPENING PERIMETER AS PER TREMCO/NUDURA APPLICATION INSTRUCTIONS OR AS DETAILED BY LOCAL APPLICABLE CODES (CODE GOVERNS)

This detail is for general informational purposes only. The project design professional determines, in its sole discretion, whether this detail or a functionally equivalent detail is best suited for the project with respect to any architecture, engineering, and design requirements, including any local building code requirements. If this document is not reviewed and the product is not approved for use by a licensed design professional, the customer agrees that the detail may contain substantive flaws requiring correction, and hereby releases Tremco CPG Inc. and Prebuck, LLC from any and all liability related to the design and installation of the product. This detail is subject to change without notice. Contact Tremco and Prebuck to ensure you have the most recent version.

Combustible Construction - Doors and Windows



Nudura Technical Support: 866-468-6299
International: +1 705-726-9499

Detail: Nudura 6" (152mm) Form Unit, Window Head/Sill Detail,
Exterior Finish as Specified, Inset Wood Rough Buck

Drawn by: KS

Checked by: KS

Scale: 1:8

Revision #: 01

Revised by: KAB

Date: 3/13/2024

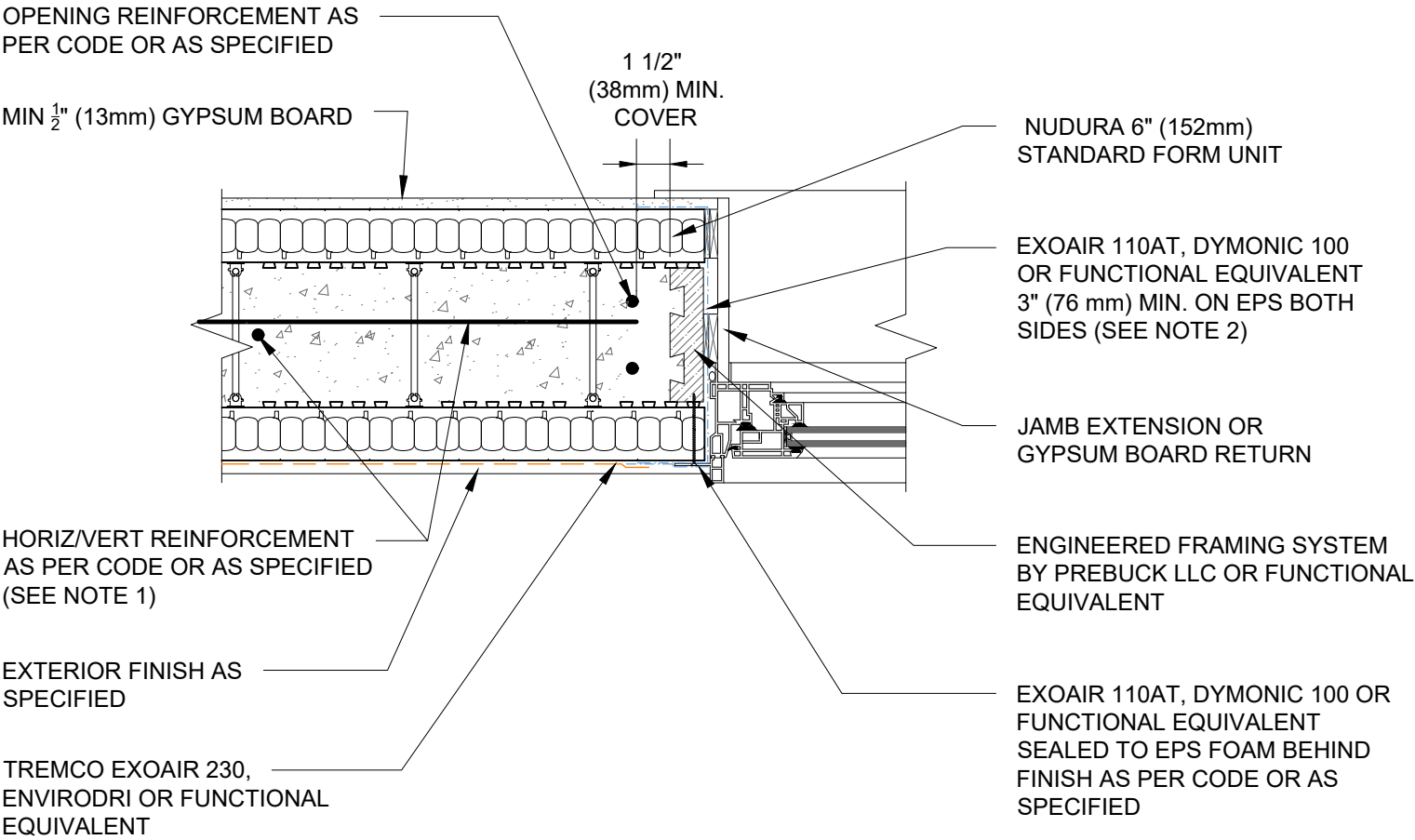
File Name:

E6C01



Construction Products Group

www.tremcocpg.com




NOTES:

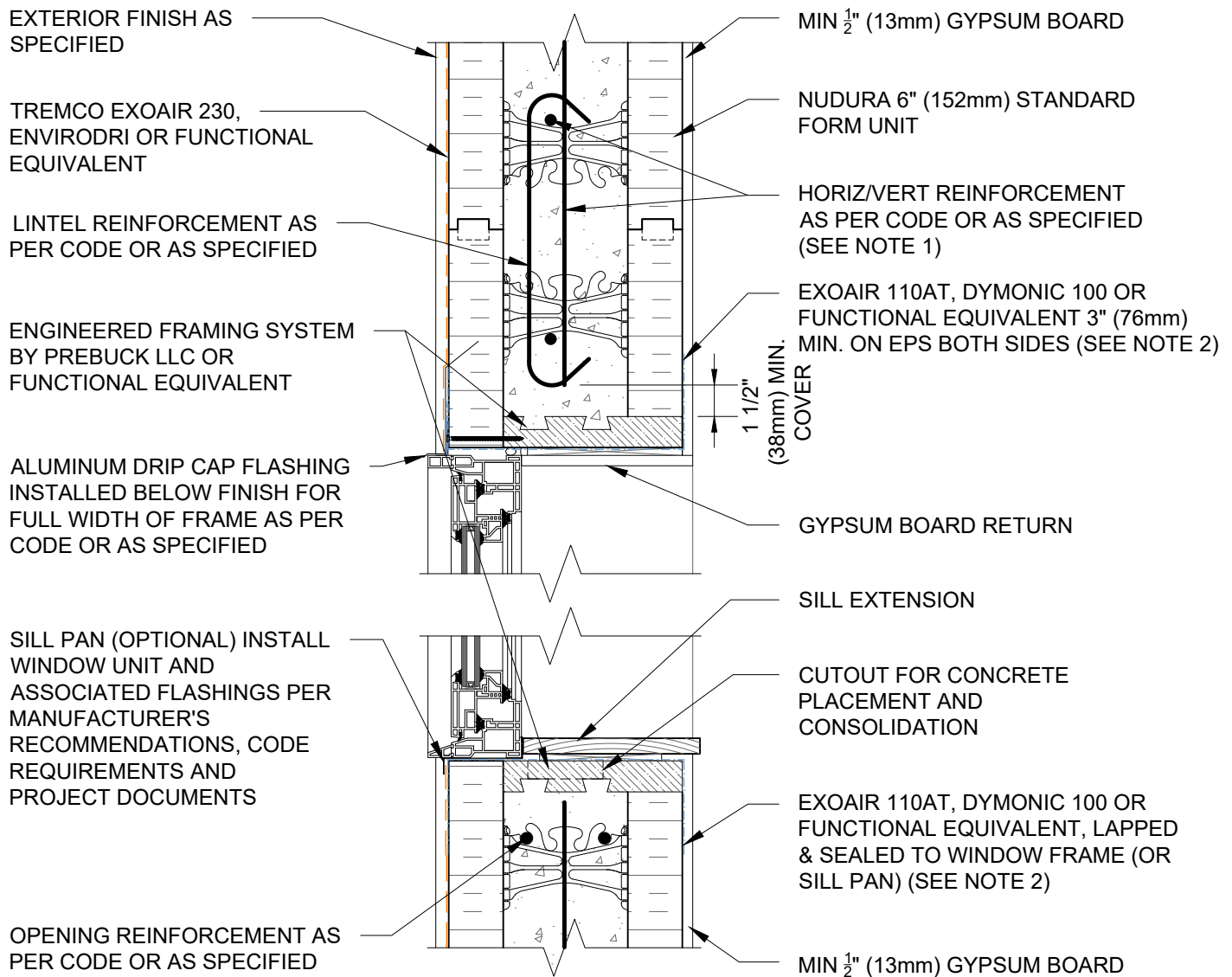
1) FOR OPTIMAL REINFORCEMENT PLACEMENT IN THE NUDURA FORM, SPACING OF HORIZONTAL REINFORCEMENT TO BE SPECIFIED AT 18" (457mm) O.C. AND VERTICAL REINFORCEMENT TO BE SPECIFIED AT MULTIPLES OF 8" (203mm) O.C. REFER TO NUDURA REINFORCEMENT PLACEMENT DETAILS.

2)AIR BARRIER/DRAINAGE FLASHINGS TO BE INSTALLED AROUND COMPLETE OPENING PERIMETER AS PER TREMCO/NUDURA APPLICATION INSTRUCTIONS OR AS DETAILED BY LOCAL APPLICABLE CODES (CODE GOVERNS)

This detail is for general informational purposes, only. The project design professional determines, in its sole discretion, whether this detail or a functionally equivalent detail is best suited for the project with respect to any architecture, engineering, and design requirements, including any local building code requirements. If this document is not reviewed and the product is not approved for use by a licensed design professional, the customer agrees that the detail may contain substantive flaws requiring correction, and hereby releases Tremco CPG Inc. and Prebuck, LLC from any and all liability related to the design and installation of the product. This detail is subject to change without notice. Contact Tremco and Prebuck to ensure you have the most recent version.

Combustible Construction - Doors and Windows

 Nudura Technical Support: 866-468-6299 International: +1 705-726-9499	Detail: Nudura 6" (152mm) Form Unit, Window Jamb Detail, Inset Wood Rough Buck, Exterior Finish as Specified			File Name:
	Drawn by: KS	Checked by: KS	Scale: 1:8	E6C02
	Revision #: 01	Revised by: KAB	Date: 3/13/2024	
	www.tremcocpg.com			



NOTES:

1) FOR OPTIMAL REINFORCEMENT PLACEMENT IN THE NUDURA FORM, SPACING OF HORIZONTAL REINFORCEMENT TO BE SPECIFIED AT 18" (457mm) O.C. AND VERTICAL REINFORCEMENT TO BE SPECIFIED AT MULTIPLES OF 8" (203mm) O.C. REFER TO NUDURA REINFORCEMENT PLACEMENT DETAILS.

2) AIR BARRIER/DRAINAGE FLASHINGS TO BE INSTALLED AROUND COMPLETE OPENING PERIMETER AS PER TREMCO/NUDURA APPLICATION INSTRUCTIONS OR AS DETAILED BY LOCAL APPLICABLE CODES (CODE GOVERNS)

This detail is for general informational purposes only. The project design professional determines, in its sole discretion, whether this detail or a functionally equivalent detail is best suited for the project with respect to any architecture, engineering, and design requirements, including any local building code requirements. If this document is not reviewed and the product is not approved for use by a licensed design professional, the customer agrees that the detail may contain substantive flaws requiring correction, and hereby releases Tremco CPG Inc. and Prebuck, LLC from any and all liability related to the design and installation of the product. This detail is subject to change without notice. Contact Tremco and Prebuck to ensure you have the most recent version.

Combustible Construction - Doors and Windows



Nudura Technical Support: 866-468-6299
International: +1 705-726-9499

Detail: Nudura 6" (152mm) Form Unit, Window Head/Sill Detail,
Exterior Finish as Specified, Partial Depth Wood Rough Buck

Drawn by: KS

Checked by: KS

Scale: 1:8

Revision #: 01

Revised by: KAB

Date: 3/13/2024

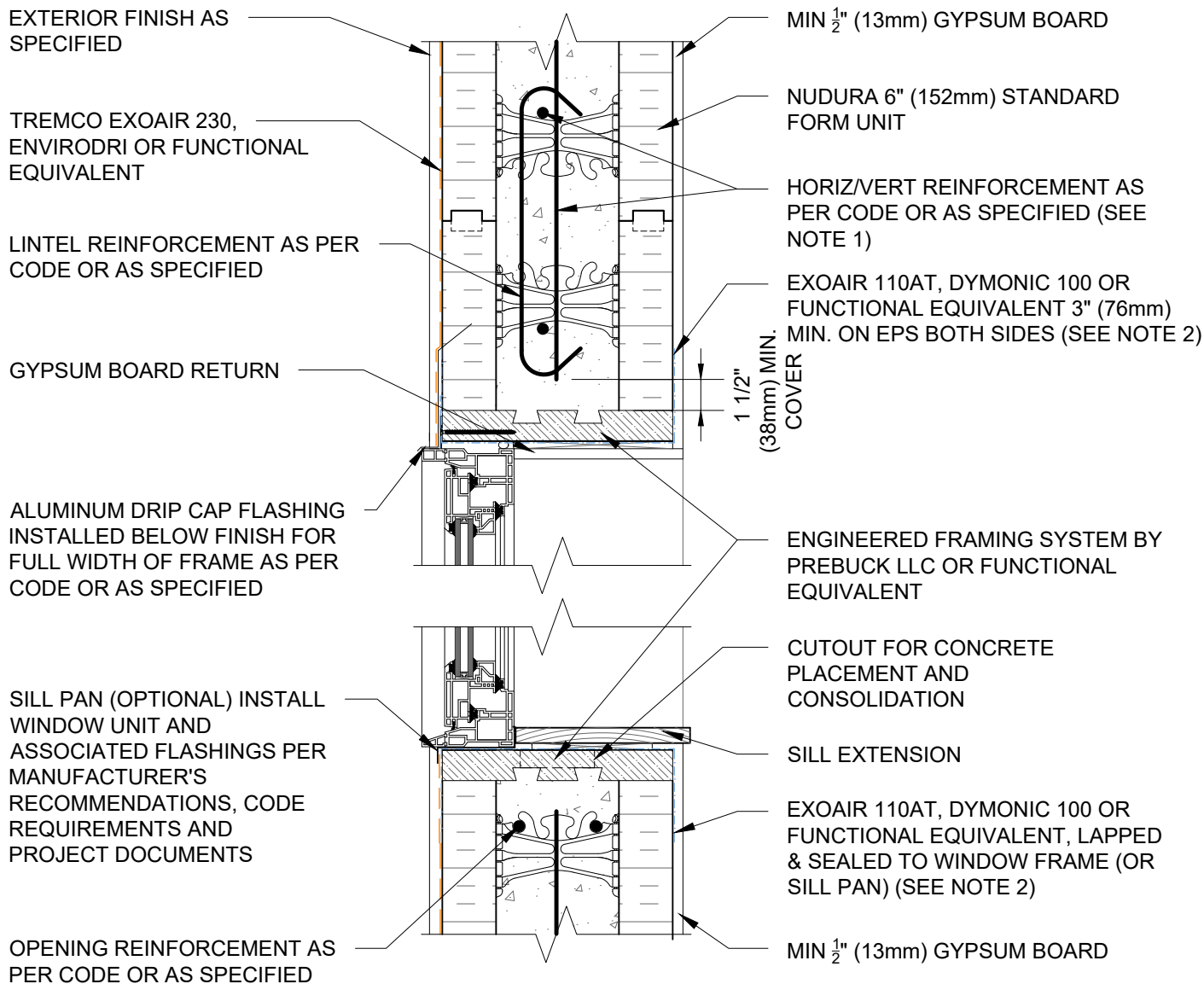
www.tremcocpg.com

File Name:

E6C03



Construction Products Group



NOTES:

1) FOR OPTIMAL REINFORCEMENT PLACEMENT IN THE NUDURA FORM, SPACING OF HORIZONTAL REINFORCEMENT TO BE SPECIFIED AT 18" (457mm) O.C. AND VERTICAL REINFORCEMENT TO BE SPECIFIED AT MULTIPLES OF 8" (203mm) O.C. REFER TO NUDURA REINFORCEMENT PLACEMENT DETAILS.

2) AIR BARRIER/DRAINAGE FLASHINGS TO BE INSTALLED AROUND COMPLETE OPENING PERIMETER AS PER TREMCO/NUDURA APPLICATION INSTRUCTIONS OR AS DETAILED BY LOCAL APPLICABLE CODES (CODE GOVERNS)

This detail is for general informational purposes only. The project design professional determines, in its sole discretion, whether this detail or a functionally equivalent detail is best suited for the project with respect to any architecture, engineering, and design requirements, including any local building code requirements. If this document is not reviewed and the product is not approved for use by a licensed design professional, the customer agrees that the detail may contain substantive flaws requiring correction, and hereby releases Tremco CPG Inc. and Prebuck, LLC from any and all liability related to the design and installation of the product. This detail is subject to change without notice. Contact Tremco and Prebuck to ensure you have the most recent version.

Combustible Construction - Doors and Windows



Nudura Technical Support: 866-468-6299
International: +1 705-726-9499

Detail: Nudura 6" (152mm) Form Unit, Window Head/Sill Detail,
Exterior Finish as Specified, Full Depth Wood Rough Buck

Drawn by: KS

Checked by: KS

Scale: 1:8

Revision #: 01

Revised by: KAB

Date: 3/13/2024

File Name:

E6C04



Construction Products Group

www.tremcocpg.com

OPENING REINFORCEMENT AS
PER CODE OR AS SPECIFIED

MIN $\frac{1}{2}$ " (13mm) GYPSUM BOARD

1 1/2"
(38mm) MIN.
COVER

NUDURA 6" (152mm)
STANDARD FORM UNIT

EXOAIR 110AT, DYMONIC 100
OR FUNCTIONAL EQUIVALENT
3" (76 mm) MIN. ON EPS BOTH
SIDES (SEE NOTE 2)

JAMB EXTENSION OR GYPSUM
BOARD RETURN

HORIZ/VERT REINFORCEMENT
AS PER CODE OR AS SPECIFIED
(SEE NOTE 1)

ENGINEERED FRAMING SYSTEM
BY PREBUCK LLC OR FUNCTIONAL
EQUIVALENT

EXTERIOR FINISH AS
SPECIFIED

EXOAIR 110AT, DYMONIC 100 OR
FUNCTIONAL EQUIVALENT
SEALED TO EPS FOAM BEHIND
FINISH AS PER CODE OR AS
SPECIFIED

TREMCO EXOAIR 230,
ENVIRODRI OR FUNCTIONAL
EQUIVALENT

NOTES:

1) FOR OPTIMAL REINFORCEMENT PLACEMENT IN THE NUDURA FORM,
SPACING OF HORIZONTAL REINFORCEMENT TO BE SPECIFIED AT 18"
(457mm) O.C. AND VERTICAL REINFORCEMENT TO BE SPECIFIED AT
MULTIPLES OF 8" (203mm) O.C. REFER TO NUDURA REINFORCEMENT
PLACEMENT DETAILS.

2) AIR BARRIER/DRAINAGE FLASHINGS TO BE INSTALLED AROUND
COMPLETE OPENING PERIMETER AS PER TREMCO/NUDURA
APPLICATION INSTRUCTIONS OR AS DETAILED BY LOCAL APPLICABLE
CODES (CODE GOVERNS)

This detail is for general informational purposes only. The project design professional determines, in its sole discretion, whether this detail or a functionally equivalent detail is best suited for the project with respect to any architecture, engineering, and design requirements, including any local building code requirements. If this document is not reviewed and the product is not approved for use by a licensed design professional, the customer agrees that the detail may contain substantive flaws requiring correction, and hereby releases Tremco CPG Inc. and Prebuck, LLC from any and all liability related to the design and installation of the product. This detail is subject to change without notice. Contact Tremco and Prebuck to ensure you have the most recent version.

Combustible Construction - Doors and Windows



Nudura Technical Support: 866-468-6299
International: +1 705-726-9499

Detail: Nudura 6" (152mm) Form Unit, Window Jamb Detail, Partial Depth
Wood Rough Buck, Exterior Finish as Specified

Drawn by: KS

Checked by: KS

Scale: 1:8

Revision #: 01

Revised by: KAB

Date: 3/13/2024

File Name:

E6C05



Construction Products Group

www.tremcocpg.com

OPENING REINFORCEMENT AS
PER CODE OR AS SPECIFIED

MIN $\frac{1}{2}$ " (13mm) GYPSUM BOARD

1 1/2"
(38mm) MIN.
COVER

NUDURA 6" (152mm)
STANDARD FORM UNIT

EXOAIR 110AT, DYMONIC 100
OR FUNCTIONAL EQUIVALENT
3" (76 mm) MIN. ON EPS BOTH
SIDES (SEE NOTE 2)

JAMB EXTENSION OR
GYPSUM BOARD RETURN

HORIZ/VERT REINFORCEMENT
AS PER CODE OR AS SPECIFIED
(SEE NOTE 1)

EXTERIOR FINISH AS
SPECIFIED

TREMCO EXOAIR 230,
ENVIRODRI OR FUNCTIONAL
EQUIVALENT

ENGINEERED FRAMING SYSTEM
BY PREBUCK LLC OR FUNCTIONAL
EQUIVALENT

EXOAIR 110AT, DYMONIC 100 OR
FUNCTIONAL EQUIVALENT
SEALED TO EPS FOAM BEHIND
FINISH AS PER CODE OR AS
SPECIFIED

NOTES:

1) FOR OPTIMAL REINFORCEMENT PLACEMENT IN THE NUDURA FORM,
SPACING OF HORIZONTAL REINFORCEMENT TO BE SPECIFIED AT 18"
(457mm) O.C. AND VERTICAL REINFORCEMENT TO BE SPECIFIED AT
MULTIPLES OF 8" (203mm) O.C. REFER TO NUDURA REINFORCEMENT
PLACEMENT DETAILS.

2) AIR BARRIER/DRAINAGE FLASHINGS TO BE INSTALLED AROUND
COMPLETE OPENING PERIMETER AS PER TREMCO/NUDURA
APPLICATION INSTRUCTIONS OR AS DETAILED BY LOCAL APPLICABLE
CODES (CODE GOVERNS)

This detail is for general informational purposes only. The project design professional determines, in its sole discretion, whether this detail or a functionally equivalent detail is best suited for the project with respect to any architecture, engineering, and design requirements, including any local building code requirements. If this document is not reviewed and the product is not approved for use by a licensed design professional, the customer agrees that the detail may contain substantive flaws requiring correction, and hereby releases Tremco CPG Inc. and Prebuck, LLC from any and all liability related to the design and installation of the product. This detail is subject to change without notice. Contact Tremco and Prebuck to ensure you have the most recent version.

Combustible Construction - Doors and Windows



Nudura Technical Support: 866-468-6299
International: +1 705-726-9499

Detail: Nudura 6" (152mm) Form Unit, Window Jamb Detail, Full Depth Wood
Rough Buck, Exterior Finish as Specified

Drawn by: KS

Checked by: KS

Scale: 1:8

Revision #: 01

Revised by: KAB

Date: 3/13/2024

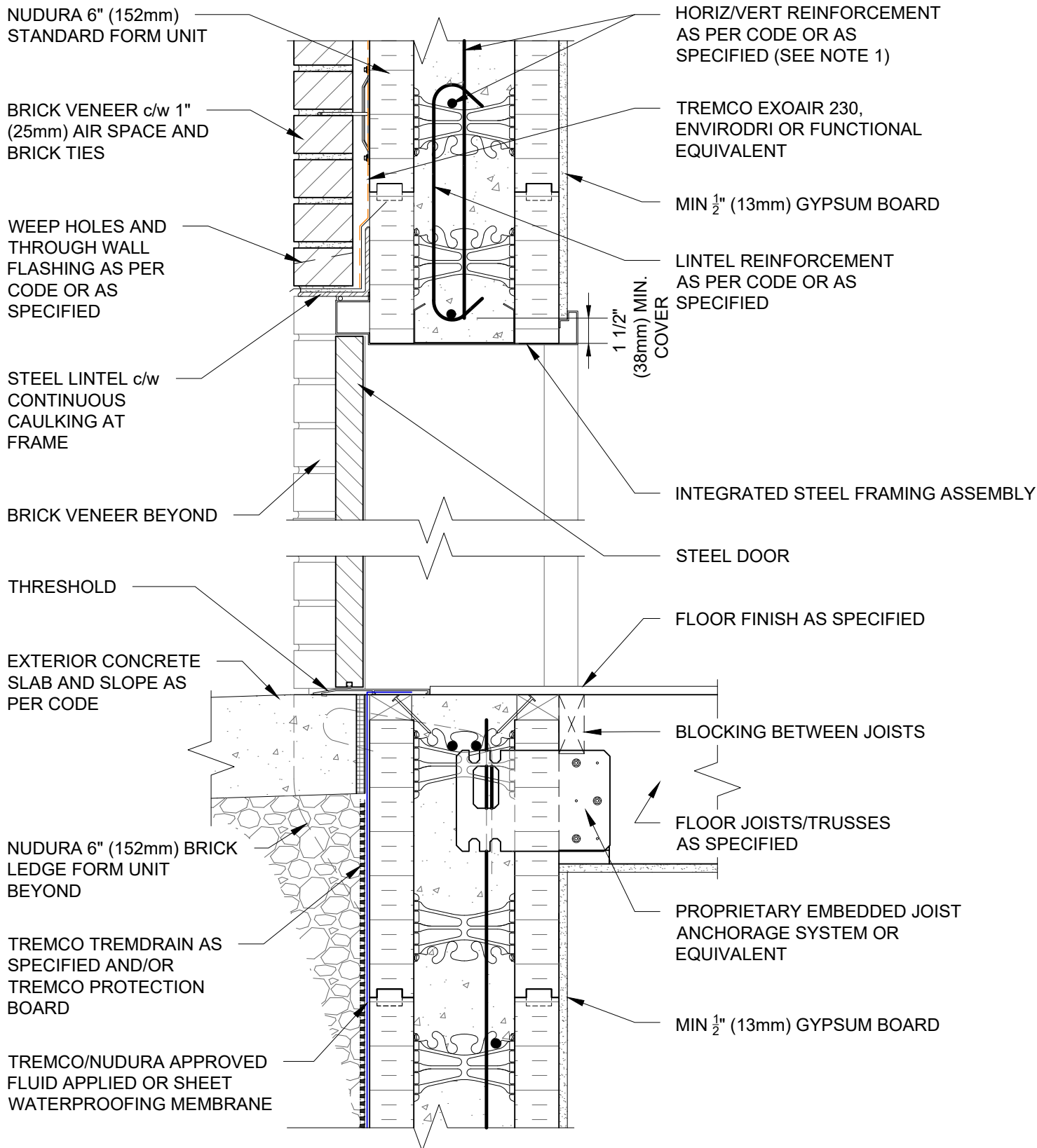
File Name:

E6C06



Construction Products Group

www.tremcocpg.com



NOTES:

1) FOR OPTIMAL REINFORCEMENT PLACEMENT IN THE NUDURA FORM, SPACING OF HORIZONTAL REINFORCEMENT TO BE SPECIFIED AT 18" (457mm) O.C. AND VERTICAL REINFORCEMENT TO BE SPECIFIED AT MULTIPLES OF 8" (203mm) O.C. REFER TO NUDURA REINFORCEMENT PLACEMENT DETAILS.

This detail is for general informational purposes, only. The project design professional determines, in its sole discretion, whether this detail or a functionally equivalent detail is best suited for the project with respect to any architecture, engineering, and design requirements, including any local building code requirements. If this document is not reviewed and the product is not approved for use by a licensed design professional, the customer agrees that the detail may contain substantive flaws requiring correction, and hereby releases Tremco CPG Inc. from any and all liability related to the design and installation of the product. This detail is subject to change without notice. Contact Tremco to ensure you have the most recent version.

Combustible Construction - Doors and Windows



Nudura Technical Support: 866-468-6299
International: +1 705-726-9499

Detail: Nudura 6" (152mm) Form Unit, Door Head/Sill Detail, Brick Veneer Finish, Wood Rough Buck

Drawn by: JN

Checked by: KS

Scale: 1:8

Revision #: 05

Revised by: KAB

Date: 3/13/2024

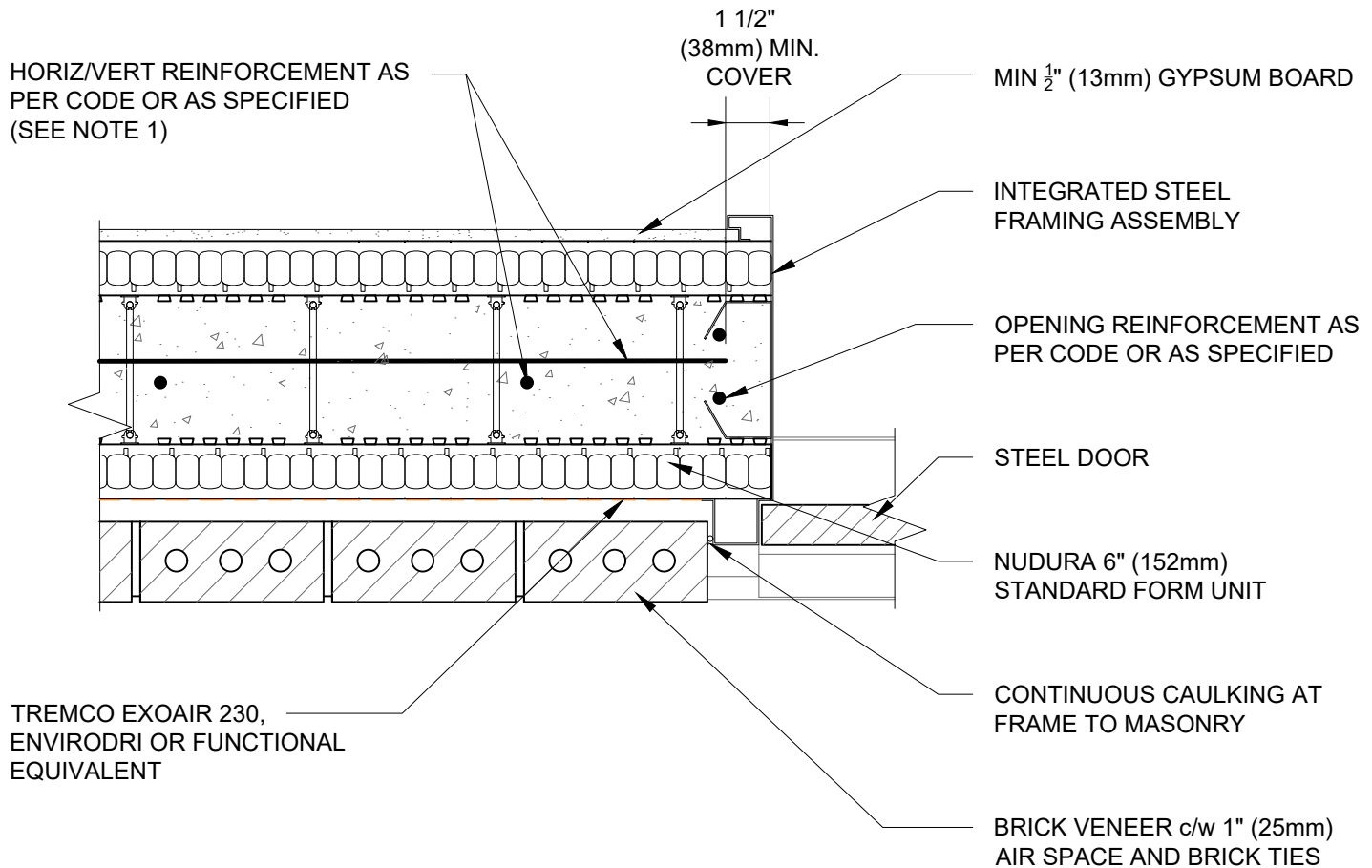
File Name:

E6E01



Construction Products Group

www.tremcocpg.com



NOTES:

1) FOR OPTIMAL REINFORCEMENT PLACEMENT IN THE NUDURA FORM, SPACING OF HORIZONTAL REINFORCEMENT TO BE SPECIFIED AT 18" (457mm) O.C. AND VERTICAL REINFORCEMENT TO BE SPECIFIED AT MULTIPLES OF 8" (203mm) O.C. REFER TO NUDURA REINFORCEMENT PLACEMENT DETAILS.

This detail is for general informational purposes only. The project design professional determines, in its sole discretion, whether this detail or a functionally equivalent detail is best suited for the project with respect to any architecture, engineering, and design requirements, including any local building code requirements. If this document is not reviewed and the product is not approved for use by a licensed design professional, the customer agrees that the detail may contain substantive flaws requiring correction, and hereby releases Tremco CPG Inc. from any and all liability related to the design and installation of the product. This detail is subject to change without notice. Contact Tremco to ensure you have the most recent version.

Combustible Construction - Doors and Windows



Nudura Technical Support: 866-468-6299
International: +1 705-726-9499

Detail: Nudura 6" (152mm) Form Unit, Door Jamb Detail, Brick Veneer Finish,
Metal Door Frame

Drawn by: TVC

Checked by: KS

Scale: 1:8

Revision #: 04

Revised by: KAB

Date: 3/13/2024

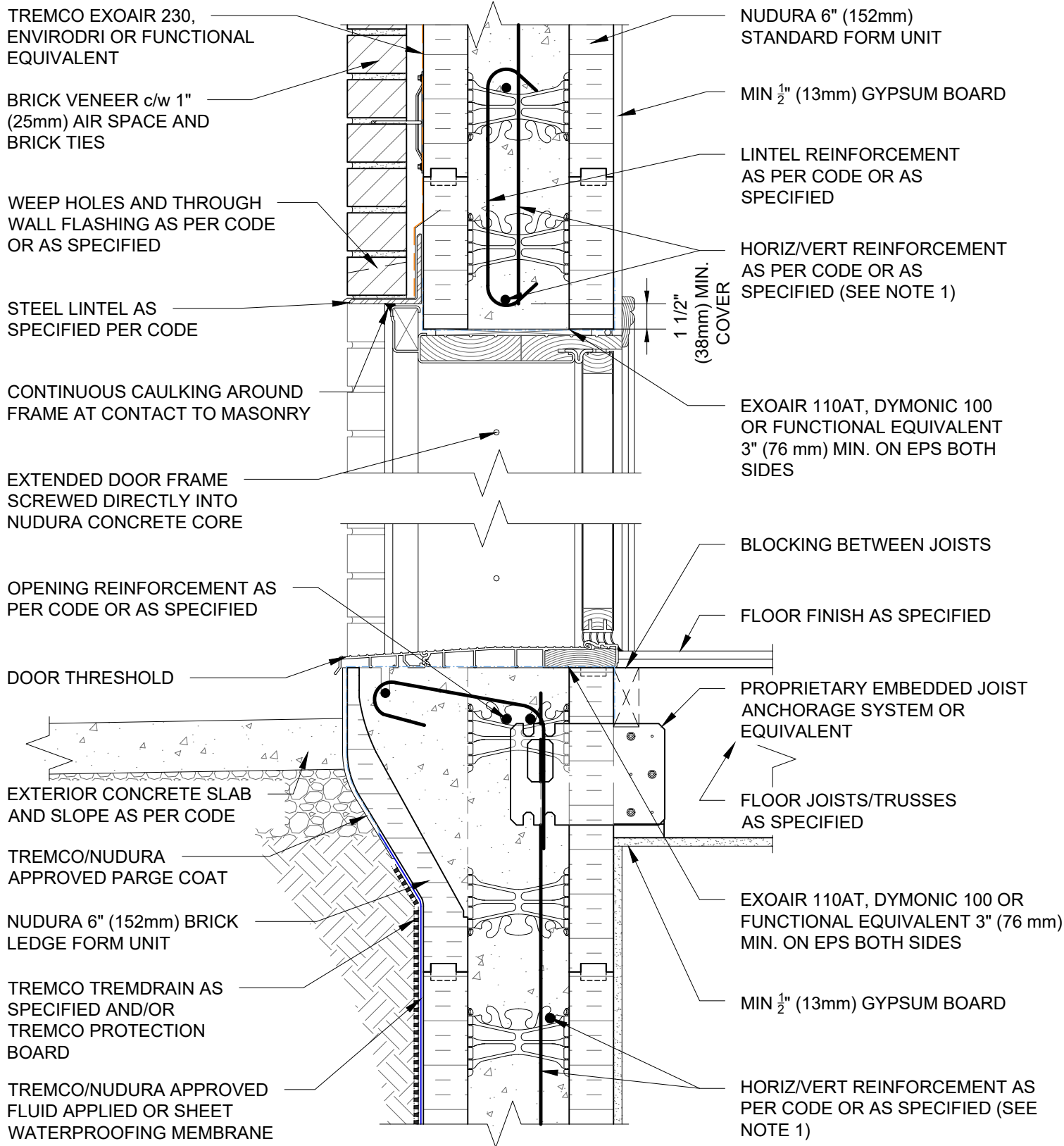
File Name:

E6E02



Construction Products Group

www.tremcocpg.com



NOTES:

1) FOR OPTIMAL REINFORCEMENT PLACEMENT IN THE NUDURA FORM, SPACING OF HORIZONTAL REINFORCEMENT TO BE SPECIFIED AT 18" (457mm) O.C. AND VERTICAL REINFORCEMENT TO BE SPECIFIED AT MULTIPLES OF 8" (203mm) O.C. REFER TO NUDURA REINFORCEMENT PLACEMENT DETAILS.

This detail is for general informational purposes, only. The project design professional determines, in its sole discretion, whether this detail or a functionally equivalent detail is best suited for the project with respect to any architecture, engineering, and design requirements, including any local building code requirements. If this document is not reviewed and the product is not approved for use by a licensed design professional, the customer agrees that the detail may contain substantive flaws requiring correction, and hereby releases Tremco CPG Inc. from any and all liability related to the design and installation of the product. This detail is subject to change without notice. Contact Tremco to ensure you have the most recent version.

Combustible Construction - Doors and Windows



Nudura Technical Support: 866-468-6299
International: +1 705-726-9499

Detail: Nudura 6" (152mm) Form Unit, Door Head/Threshold Detail, Brick Veneer Finish

Drawn by: KS

Checked by: KS

Scale: 1:8

Revision #: 01

Revised by: KAB

Date: 3/13/2024

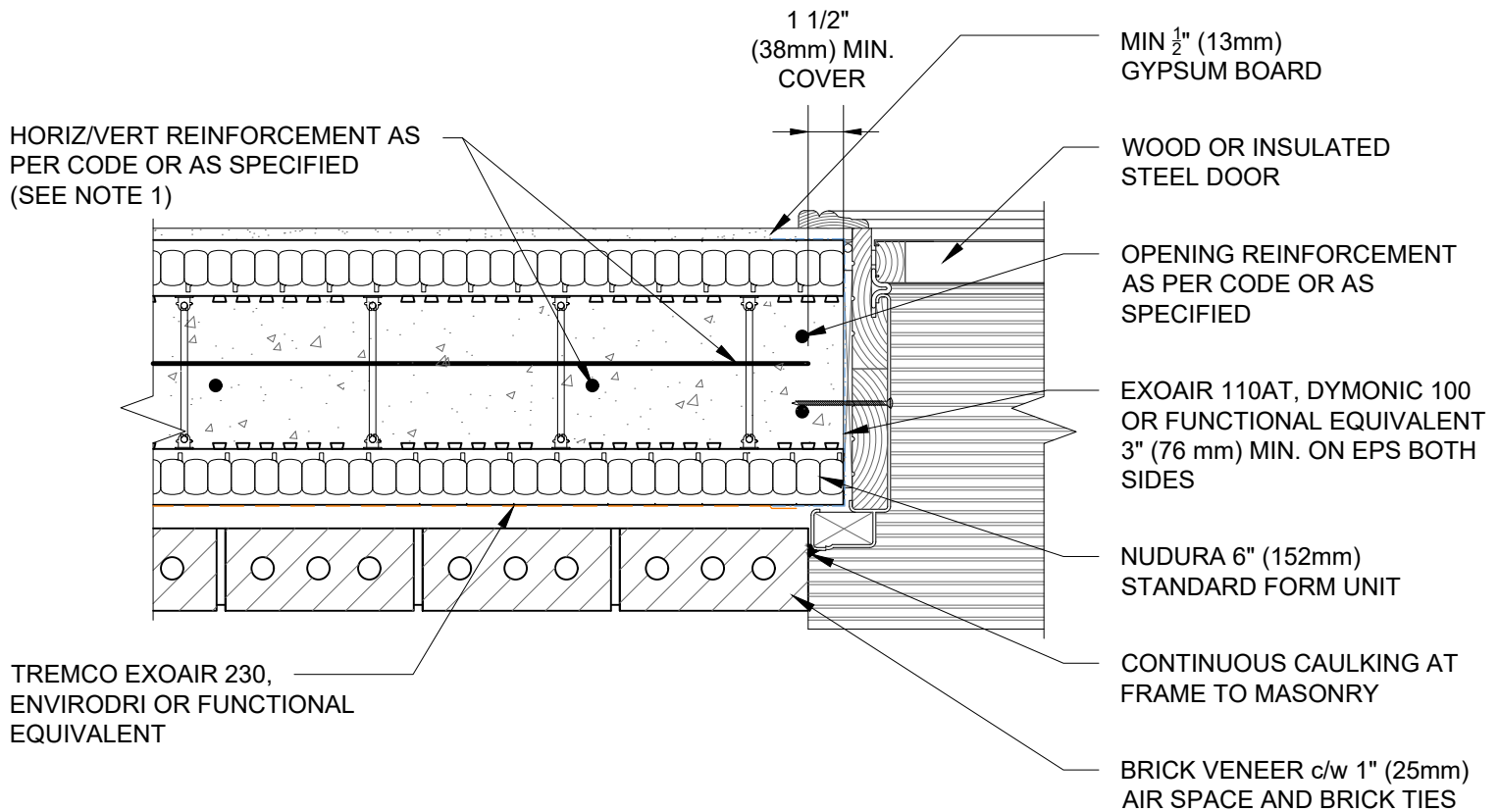
File Name:

E6E10



Construction Products Group

www.tremcocpg.com



NOTES:

1) FOR OPTIMAL REINFORCEMENT PLACEMENT IN THE NUDURA FORM, SPACING OF HORIZONTAL REINFORCEMENT TO BE SPECIFIED AT 18" (457mm) O.C. AND VERTICAL REINFORCEMENT TO BE SPECIFIED AT MULTIPLES OF 8" (203mm) O.C. REFER TO NUDURA REINFORCEMENT PLACEMENT DETAILS.

This detail is for general informational purposes only. The project design professional determines, in its sole discretion, whether this detail or a functionally equivalent detail is best suited for the project with respect to any architecture, engineering, and design requirements, including any local building code requirements. If this document is not reviewed and the product is not approved for use by a licensed design professional, the customer agrees that the detail may contain substantive flaws requiring correction, and hereby releases Tremco CPG Inc. from any and all liability related to the design and installation of the product. This detail is subject to change without notice. Contact Tremco to ensure you have the most recent version.

Combustible Construction - Doors and Windows



Nudura Technical Support: 866-468-6299
International: +1 705-726-9499

Detail: Nudura 6" (152mm) Form Unit, Door Jamb Detail, Brick Veneer Detail

Drawn by: KS

Checked by: KS

Scale: 1:8

Revision #: 01

Revised by: KAB

Date: 3/13/2024

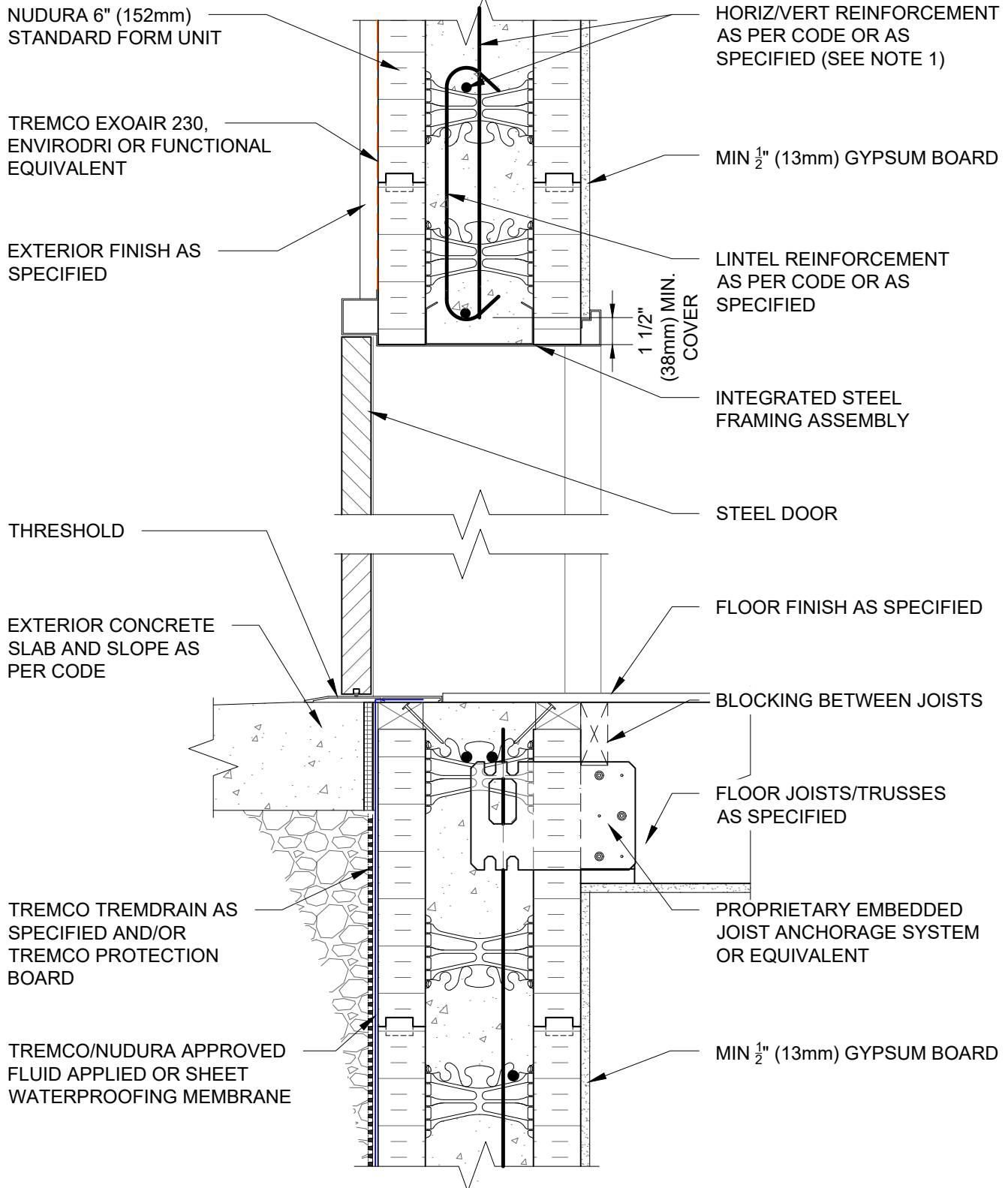
File Name:

E6E11



Construction Products Group

www.tremcocpg.com



NOTES:

1) FOR OPTIMAL REINFORCEMENT PLACEMENT IN THE NUDURA FORM, SPACING OF HORIZONTAL REINFORCEMENT TO BE SPECIFIED AT 18" (457mm) O.C. AND VERTICAL REINFORCEMENT TO BE SPECIFIED AT MULTIPLES OF 8" (203mm) O.C. REFER TO NUDURA REINFORCEMENT PLACEMENT DETAILS.

This detail is for general informational purposes only. The project design professional determines, in its sole discretion, whether this detail or a functionally equivalent detail is best suited for the project with respect to any architecture, engineering, and design requirements, including any local building code requirements. If this document is not reviewed and the product is not approved for use by a licensed design professional, the customer agrees that the detail may contain substantive flaws requiring correction, and hereby releases Tremco CPG Inc. from any and all liability related to the design and installation of the product. This detail is subject to change without notice. Contact Tremco to ensure you have the most recent version.

Combustible Construction - Doors and Windows



Nudura Technical Support: 866-468-6299
International: +1 705-726-9499

Detail: Nudura 6" (152mm) Form Unit, Door Head/Sill Detail,
Exterior Finish as Specified, Metal Door Frame

Drawn by: TVC

Checked by: KS

Scale: 1:8

Revision #: 04

Revised by: KAB

Date: 3/13/2024

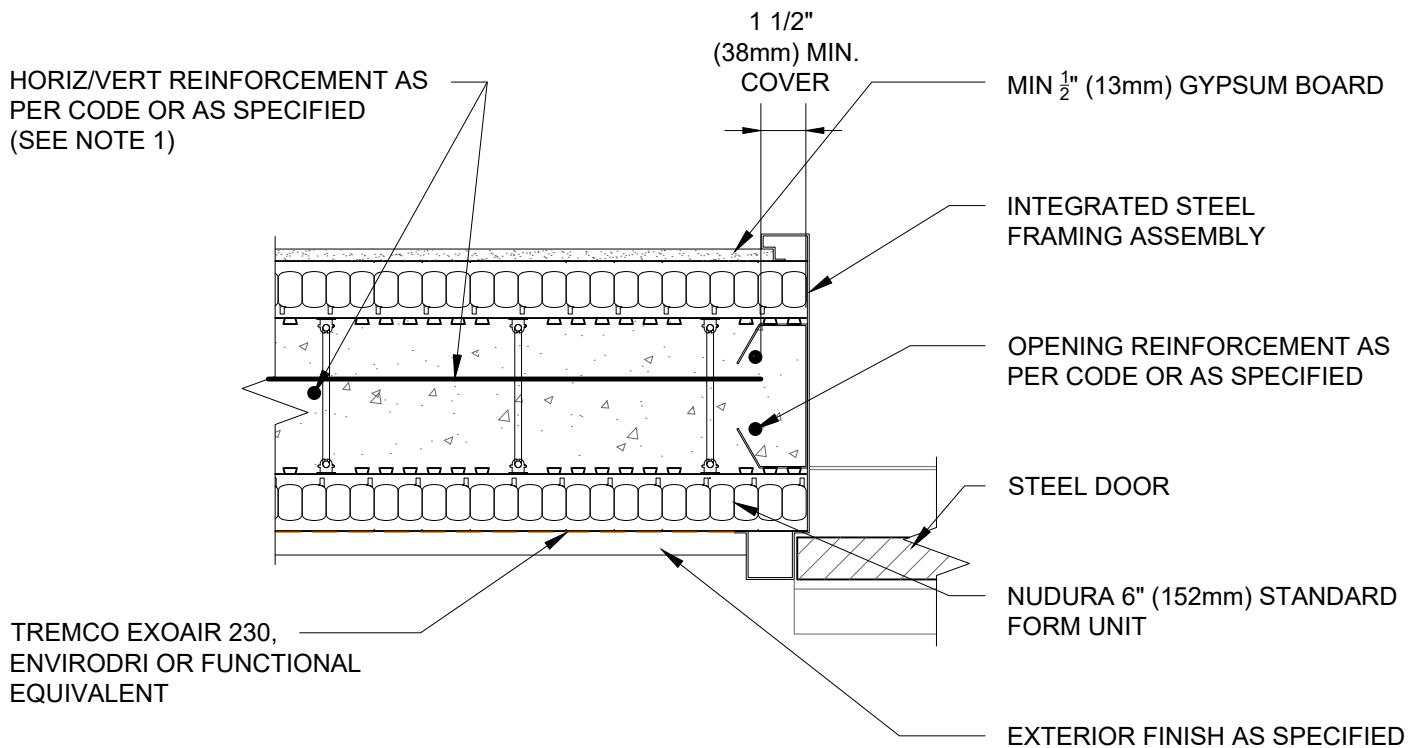
File Name:

E6G01



Construction Products Group

www.tremcocpg.com



NOTES:

1) FOR OPTIMAL REINFORCEMENT PLACEMENT IN THE NUDURA FORM, SPACING OF HORIZONTAL REINFORCEMENT TO BE SPECIFIED AT 18" (457mm) O.C. AND VERTICAL REINFORCEMENT TO BE SPECIFIED AT MULTIPLES OF 8" (203mm) O.C. REFER TO NUDURA REINFORCEMENT PLACEMENT DETAILS.

This detail is for general informational purposes only. The project design professional determines, in its sole discretion, whether this detail or a functionally equivalent detail is best suited for the project with respect to any architecture, engineering, and design requirements, including any local building code requirements. If this document is not reviewed and the product is not approved for use by a licensed design professional, the customer agrees that the detail may contain substantive flaws requiring correction, and hereby releases Tremco CPG Inc. from any and all liability related to the design and installation of the product. This detail is subject to change without notice. Contact Tremco to ensure you have the most recent version.

Combustible Construction - Doors and Windows



Nudura Technical Support: 866-468-6299
International: +1 705-726-9499

Detail: Nudura 6" (152mm) Form Unit, Door Jamb Detail, Steel Door Frame, Exterior Finish as Specified

Drawn by: JN

Checked by: KS

Scale: 1:8

Revision #: 05

Revised by: KAB

Date: 3/13/2024

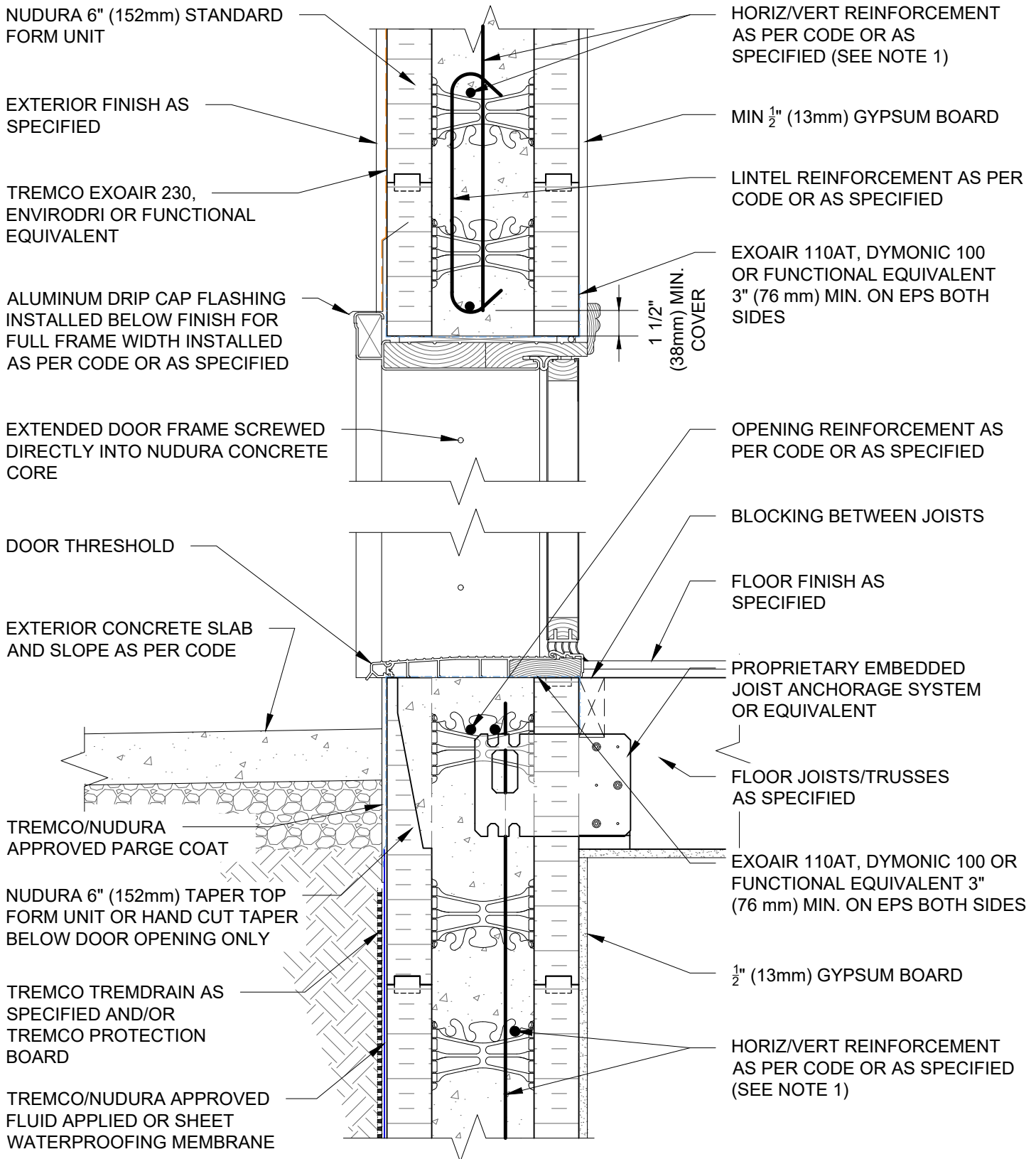
File Name:

E6G02



Construction Products Group

www.tremcocpg.com



NOTES:

1) FOR OPTIMAL REINFORCEMENT PLACEMENT IN THE NUDURA FORM, SPACING OF HORIZONTAL REINFORCEMENT TO BE SPECIFIED AT 18" (457mm) O.C. AND VERTICAL REINFORCEMENT TO BE SPECIFIED AT MULTIPLES OF 8" (203mm) O.C. REFER TO NUDURA REINFORCEMENT PLACEMENT DETAILS.

This detail is for general informational purposes only. The project design professional determines, in its sole discretion, whether this detail or a functionally equivalent detail is best suited for the project with respect to any architecture, engineering, and design requirements, including any local building code requirements. If this document is not reviewed and the product is not approved for use by a licensed design professional, the customer agrees that the detail may contain substantive flaws requiring correction, and hereby releases Tremco CPG Inc. from any and all liability related to the design and installation of the product. This detail is subject to change without notice. Contact Tremco to ensure you have the most recent version.

Combustible Construction - Doors and Windows



Nudura Technical Support: 866-468-6299
International: +1 705-726-9499

Detail: Nudura 6" (152mm) Form Unit, Door Head/Threshold Detail,
Exterior Finish as Specified

Drawn by: KS

Checked by: KS

Scale: 1:8

Revision #: 01

Revised by: KAB

Date: 3/13/2024

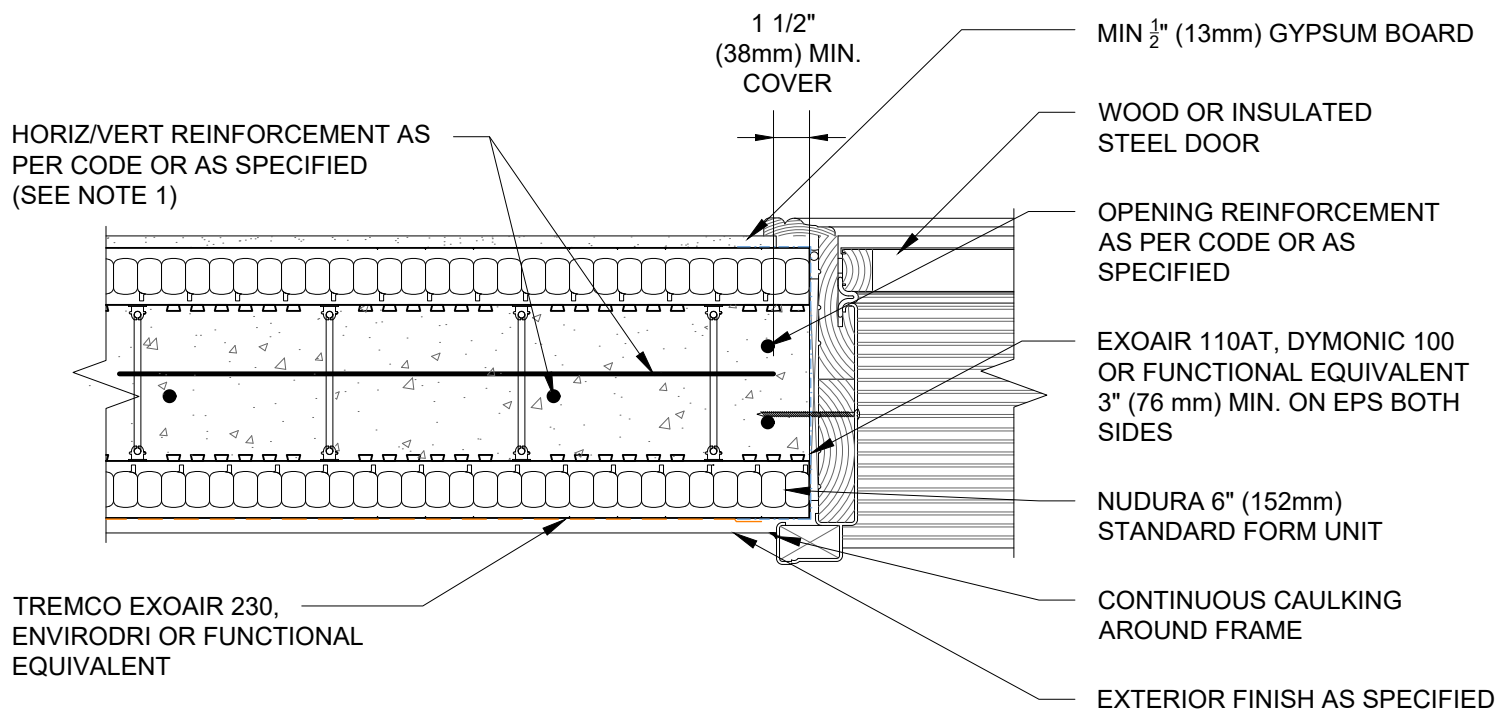
File Name:

E6G13



Construction Products Group

www.tremcocpg.com



NOTES:

1) FOR OPTIMAL REINFORCEMENT PLACEMENT IN THE NUDURA FORM, SPACING OF HORIZONTAL REINFORCEMENT TO BE SPECIFIED AT 18" (457mm) O.C. AND VERTICAL REINFORCEMENT TO BE SPECIFIED AT MULTIPLES OF 8" (203mm) O.C. REFER TO NUDURA REINFORCEMENT PLACEMENT DETAILS.

This detail is for general informational purposes, only. The project design professional determines, in its sole discretion, whether this detail or a functionally equivalent detail is best suited for the project with respect to any architecture, engineering, and design requirements, including any local building code requirements. If this document is not reviewed and the product is not approved for use by a licensed design professional, the customer agrees that the detail may contain substantive flaws requiring correction, and hereby releases Tremco CPG Inc. from any and all liability related to the design and installation of the product. This detail is subject to change without notice. Contact Tremco to ensure you have the most recent version.

Combustible Construction - Doors and Windows



Nudura Technical Support: 866-468-6299
International: +1 705-726-9499

Detail: Nudura 6" (152mm) Form Unit, Door Jamb Detail, Non-Brick Finish

Drawn by: KS

Checked by: KS

Scale: 1:8

Revision #: 01

Revised by: KAB

Date: 3/13/2024

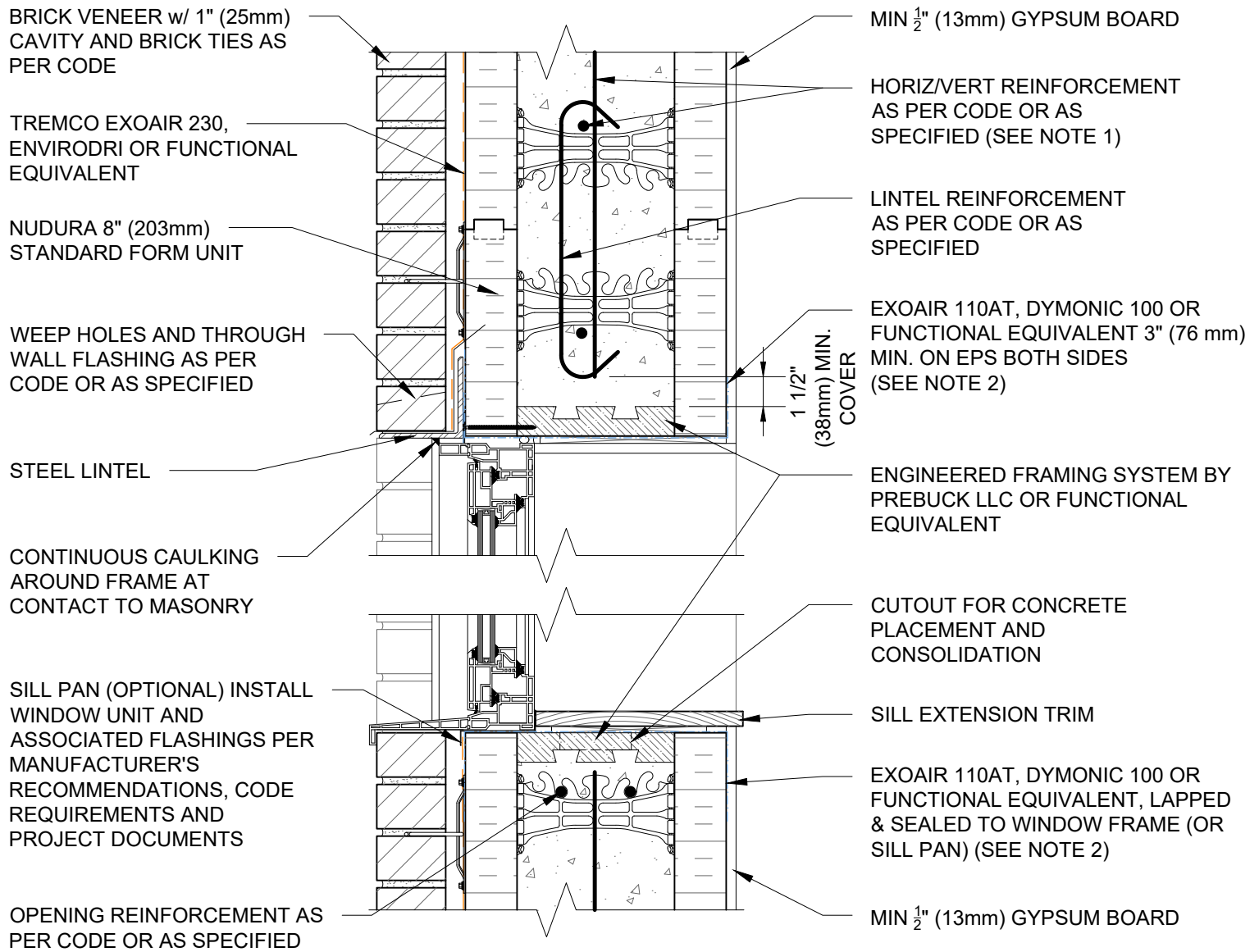
File Name:

E6G14



Construction Products Group

www.tremcocpg.com



NOTES:

1) FOR OPTIMAL REINFORCEMENT PLACEMENT IN THE NUDURA FORM, SPACING OF HORIZONTAL REINFORCEMENT TO BE SPECIFIED AT 18" (457mm) O.C. AND VERTICAL REINFORCEMENT TO BE SPECIFIED AT MULTIPLES OF 8" (203mm) O.C. REFER TO NUDURA REINFORCEMENT PLACEMENT DETAILS.

2) AIR BARRIER/DRAINAGE FLASHINGS TO BE INSTALLED AROUND COMPLETE OPENING PERIMETER AS PER TREMCO/NUDURA APPLICATION INSTRUCTIONS OR AS DETAILED BY LOCAL APPLICABLE CODES (CODE GOVERNS)

This detail is for general informational purposes only. The project design professional determines, in its sole discretion, whether this detail or a functionally equivalent detail is best suited for the project with respect to any architecture, engineering, and design requirements, including any local building code requirements. If this document is not reviewed and the product is not approved for use by a licensed design professional, the customer agrees that the detail may contain substantive flaws requiring correction, and hereby releases Tremco CPG Inc. and Prebuck, LLC from any and all liability related to the design and installation of the product. This detail is subject to change without notice. Contact Tremco and Prebuck to ensure you have the most recent version.

Combustible Construction - Doors and Windows



Nudura Technical Support: 866-468-6299
International: +1 705-726-9499

Detail: Nudura 8" (203mm) Form Unit, Window Head/Sill Detail,
Brick Veneer Finish, Inset Wood Rough Buck

Drawn by: KS

Checked by: KS

Scale: 1:8

Revision #: 01

Revised by: KAB

Date: 3/13/2024

File Name:

E8A01



Construction Products Group

www.tremcocpg.com

OPENING REINFORCEMENT AS
PER CODE OR AS SPECIFIED

MIN 1/2" (13mm) GYPSUM BOARD

1 1/2"
(38mm) MIN.
COVER

NUDURA 8" (203mm)
STANDARD FORM UNIT

EXOAIR 110AT, DYMONIC 100
OR FUNCTIONAL EQUIVALENT
3" (76 mm) MIN. ON EPS BOTH
SIDES (SEE NOTE 2)

JAMB EXTENSION OR
GYPSUM BOARD RETURN

ENGINEERED FRAMING SYSTEM
BY PREBUCK LLC OR FUNCTIONAL
EQUIVALENT

HORIZ/VERT REINFORCEMENT
AS PER CODE OR AS SPECIFIED
(SEE NOTE 1)

BRICK VENEER c/w 1" (25mm)
AIR SPACE AND BRICK TIES

TREMCO EXOAIR 230,
ENVIRODRI OR FUNCTIONAL
EQUIVALENT

CONTINUOUS CAULKING AROUND
FRAME AT CONTACT TO MASONRY

EXOAIR 110AT, DYMONIC 100 OR
FUNCTIONAL EQUIVALENT
SEALED TO EPS FOAM BEHIND
FINISH AS PER CODE OR AS
SPECIFIED

NOTES:

1) FOR OPTIMAL REINFORCEMENT PLACEMENT IN THE NUDURA FORM,
SPACING OF HORIZONTAL REINFORCEMENT TO BE SPECIFIED AT 18"
(457mm) O.C. AND VERTICAL REINFORCEMENT TO BE SPECIFIED AT
MULTIPLES OF 8" (203mm) O.C. REFER TO NUDURA REINFORCEMENT
PLACEMENT DETAILS.

2) AIR BARRIER/DRAINAGE FLASHINGS TO BE INSTALLED AROUND
COMPLETE OPENING PERIMETER AS PER TREMCO/NUDURA
APPLICATION INSTRUCTIONS OR AS DETAILED BY LOCAL APPLICABLE
CODES (CODE GOVERNS)

This detail is for general informational purposes only. The project design professional determines, in its sole discretion, whether this detail or a functionally equivalent detail is best suited for the project with respect to any architecture, engineering, and design requirements, including any local building code requirements. If this document is not reviewed and the product is not approved for use by a licensed design professional, the customer agrees that the detail may contain substantive flaws requiring correction, and hereby releases Tremco CPG Inc. and Prebuck, LLC from any and all liability related to the design and installation of the product. This detail is subject to change without notice. Contact Tremco and Prebuck to ensure you have the most recent version.

Combustible Construction - Doors and Windows



Nudura Technical Support: 866-468-6299
International: +1 705-726-9499

Detail: Nudura 8" (203mm) Form Unit, Window Jamb Detail, Inset Wood Rough Buck,
Brick Veneer Finish

Drawn by: KS

Checked by: KS

Scale: 1:8

Revision #: 01

Revised by: KAB

Date: 3/13/2024

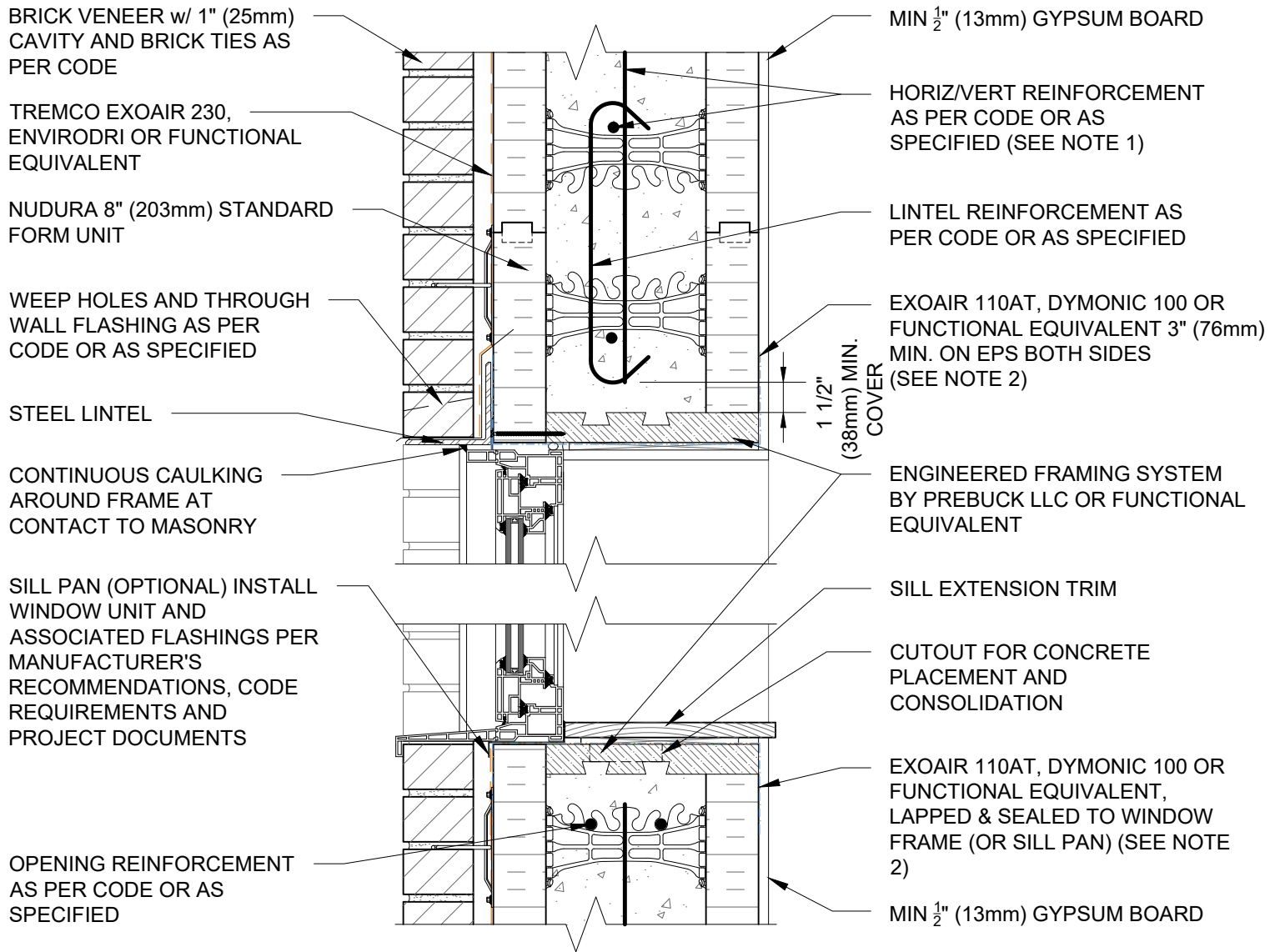
File Name:

E8A02



Construction Products Group

www.tremcocpg.com



NOTES:

1) FOR OPTIMAL REINFORCEMENT PLACEMENT IN THE NUDURA FORM, SPACING OF HORIZONTAL REINFORCEMENT TO BE SPECIFIED AT 18" (457mm) O.C. AND VERTICAL REINFORCEMENT TO BE SPECIFIED AT MULTIPLES OF 8" (203mm) O.C. REFER TO NUDURA REINFORCEMENT PLACEMENT DETAILS.

2) AIR BARRIER/DRAINAGE FLASHINGS TO BE INSTALLED AROUND COMPLETE OPENING PERIMETER AS PER TREMCO/NUDURA APPLICATION INSTRUCTIONS OR AS DETAILED BY LOCAL APPLICABLE CODES (CODE GOVERNS)

This detail is for general informational purposes only. The project design professional determines, in its sole discretion, whether this detail or a functionally equivalent detail is best suited for the project with respect to any architecture, engineering, and design requirements, including any local building code requirements. If this document is not reviewed and the product is not approved for use by a licensed design professional, the customer agrees that the detail may contain substantive flaws requiring correction, and hereby releases Tremco CPG Inc. and Prebuck, LLC from any and all liability related to the design and installation of the product. This detail is subject to change without notice. Contact Tremco and Prebuck to ensure you have the most recent version.

Combustible Construction - Doors and Windows



Nudura Technical Support: 866-468-6299
International: +1 705-726-9499

Detail: Nudura 8" (203mm) Form Unit, Window Head/Sill Detail,
Brick Veneer Finish, Partial Depth Wood Rough Buck

Drawn by: KS

Checked by: KS

Scale: 1:8

Revision #: 01

Revised by: KAB

Date: 3/13/2024

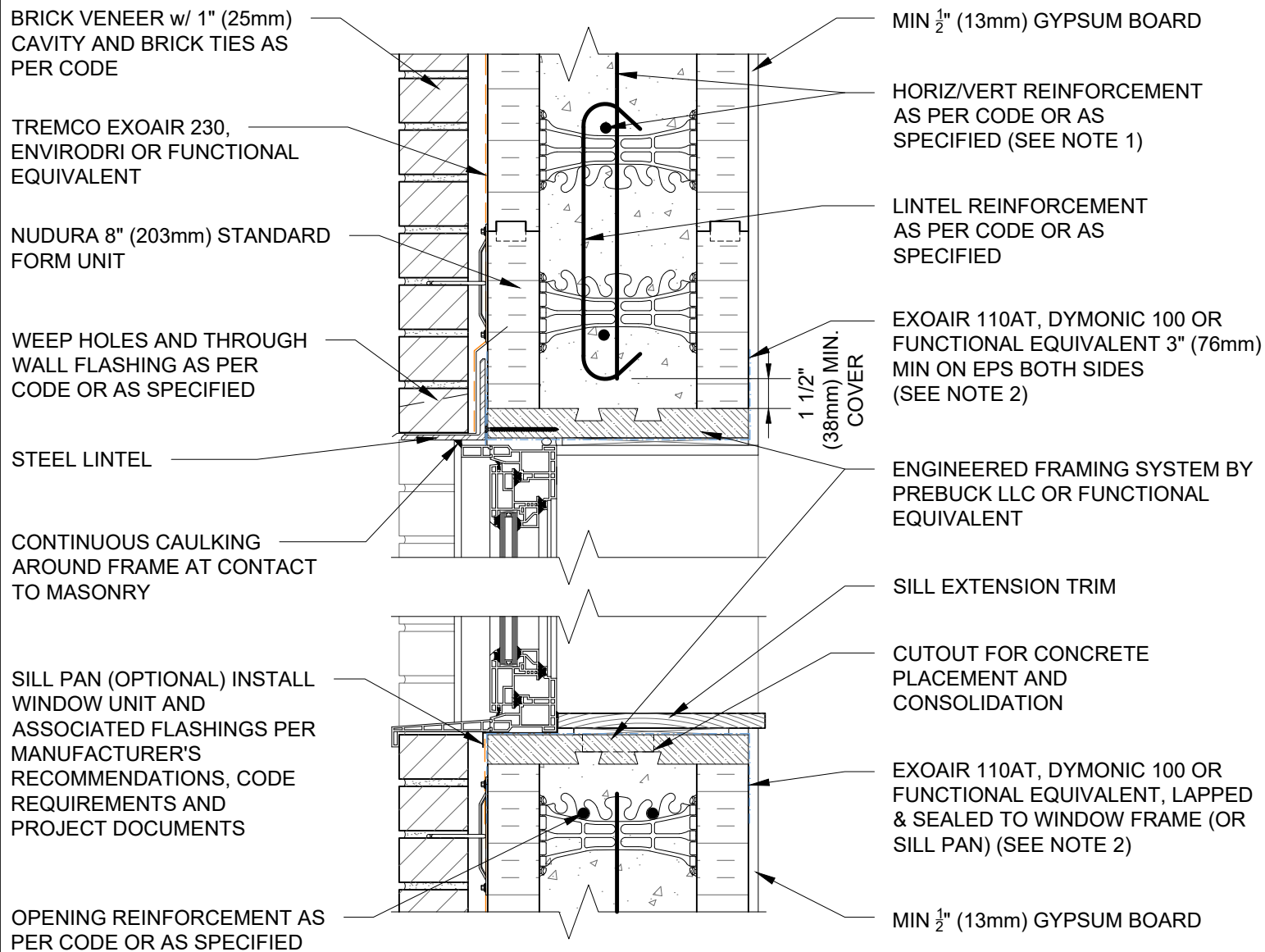
File Name:

E8A03



Construction Products Group

www.tremcocpg.com



NOTES:

1) FOR OPTIMAL REINFORCEMENT PLACEMENT IN THE NUDURA FORM, SPACING OF HORIZONTAL REINFORCEMENT TO BE SPECIFIED AT 18" (457mm) O.C. AND VERTICAL REINFORCEMENT TO BE SPECIFIED AT MULTIPLES OF 8" (203mm) O.C. REFER TO NUDURA REINFORCEMENT PLACEMENT DETAILS.

2) AIR BARRIER/DRAINAGE FLASHINGS TO BE INSTALLED AROUND COMPLETE OPENING PERIMETER AS PER TREMCO/NUDURA APPLICATION INSTRUCTIONS OR AS DETAILED BY LOCAL APPLICABLE CODES (CODE GOVERNS)

This detail is for general informational purposes only. The project design professional determines, in its sole discretion, whether this detail or a functionally equivalent detail is best suited for the project with respect to any architecture, engineering, and design requirements, including any local building code requirements. If this document is not reviewed and the product is not approved for use by a licensed design professional, the customer agrees that the detail may contain substantive flaws requiring correction, and hereby releases Tremco CPG Inc. and Prebuck, LLC from any and all liability related to the design and installation of the product. This detail is subject to change without notice. Contact Tremco and Prebuck to ensure you have the most recent version.

Combustible Construction - Doors and Windows



Nudura Technical Support: 866-468-6299
International: +1 705-726-9499

Detail: Nudura 8" (203mm) Form Unit, Window Head/Sill Detail,
Brick Veneer Finish, Full Depth Wood Rough Buck

Drawn by: KS

Checked by: KS

Scale: 1:8

Revision #: 01

Revised by: KAB

Date: 3/13/2024

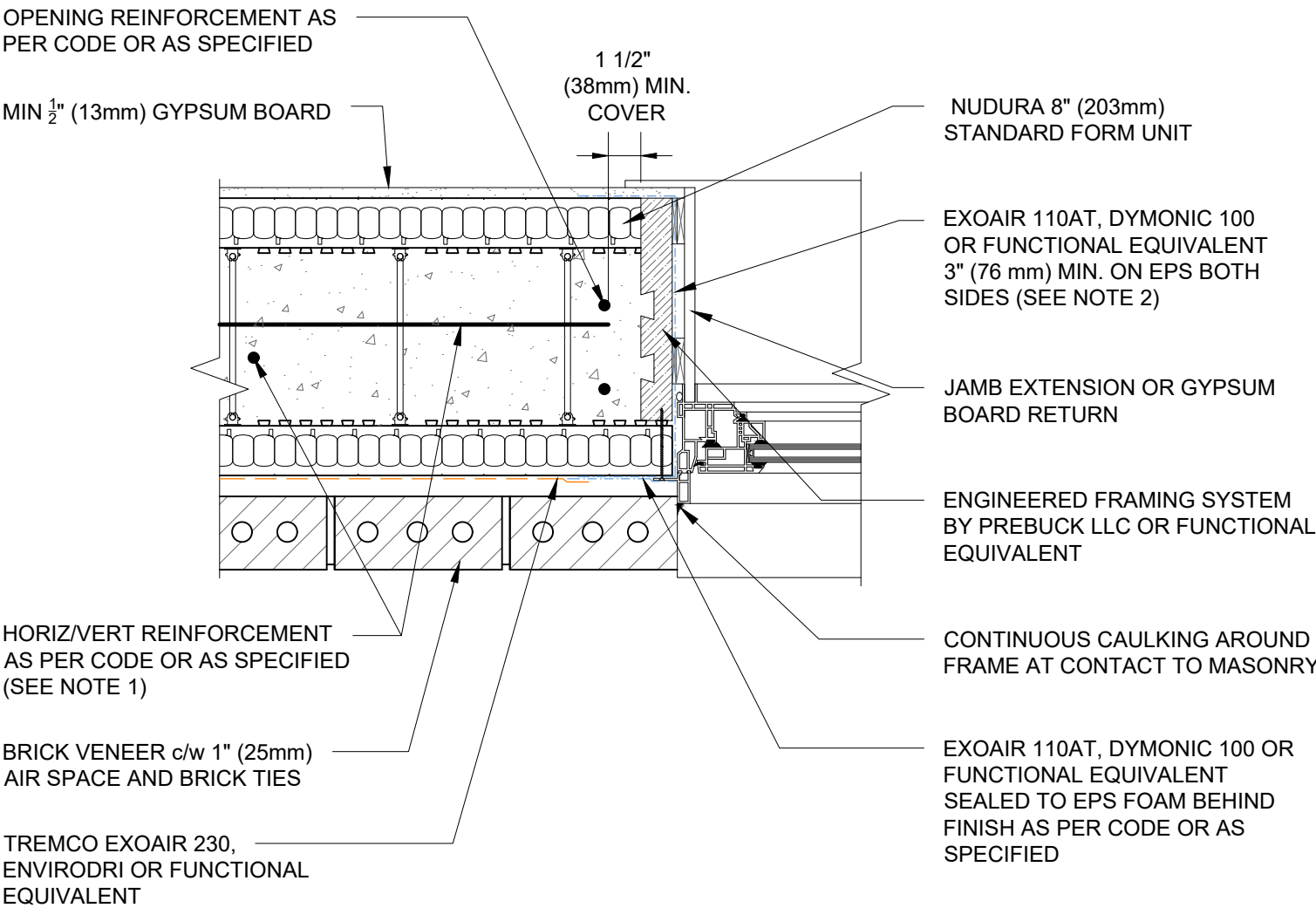
File Name:

E8A04



Construction Products Group

www.tremcocpg.com



NOTES:

1) FOR OPTIMAL REINFORCEMENT PLACEMENT IN THE NUDURA FORM, SPACING OF HORIZONTAL REINFORCEMENT TO BE SPECIFIED AT 18" (457mm) O.C. AND VERTICAL REINFORCEMENT TO BE SPECIFIED AT MULTIPLES OF 8" (203mm) O.C. REFER TO NUDURA REINFORCEMENT PLACEMENT DETAILS.

2)AIR BARRIER/DRAINAGE FLASHINGS TO BE INSTALLED AROUND COMPLETE OPENING PERIMETER AS PER TREMCO/NUDURA APPLICATION INSTRUCTIONS OR AS DETAILED BY LOCAL APPLICABLE CODES (CODE GOVERNS)

This detail is for general informational purposes, only. The project design professional determines, in its sole discretion, whether this detail or a functionally equivalent detail is best suited for the project with respect to any architecture, engineering, and design requirements, including any local building code requirements. If this document is not reviewed and the product is not approved for use by a licensed design professional, the customer agrees that the detail may contain substantive flaws requiring correction, and hereby releases Tremco CPG Inc. and Prebuck, LLC from any and all liability related to the design and installation of the product. This detail is subject to change without notice. Contact Tremco and Prebuck to ensure you have the most recent version.

Combustible Construction - Doors and Windows

Detail: Nudura 8" (203mm) Form Unit, Window Jamb Detail, Partial Depth
Wood Rough Buck, Brick Veneer Finish

File Name:

Drawn by: KS

Checked by: KS

Scale: 1:8

E8A05

Revision #: 01

Revised by: KAB

Date: 3/13/2024

www.tremcocpg.com



Nudura Technical Support: 866-468-6299
International: +1 705-726-9499



Construction Products Group

OPENING REINFORCEMENT AS
PER CODE OR AS SPECIFIED

MIN 1/2" (13mm) GYPSUM BOARD

1 1/2"
(38mm) MIN.
COVER

NUDURA 6" (152mm)
STANDARD FORM UNIT

EXOAIR 110AT, DYMONIC 100
OR FUNCTIONAL EQUIVALENT
3" (76 mm) MIN. ON EPS BOTH
SIDES (SEE NOTE 2)

JAMB EXTENSION OR GYPSUM
BOARD RETURN

ENGINEERED FRAMING SYSTEM
BY PREBUCK LLC OR FUNCTIONAL
EQUIVALENT

CONTINUOUS CAULKING AROUND
FRAME AT CONTACT TO MASONRY

EXOAIR 110AT, DYMONIC 100 OR
FUNCTIONAL EQUIVALENT
SEALED TO EPS FOAM BEHIND
FINISH AS PER CODE OR AS
SPECIFIED

HORIZ/VERT REINFORCEMENT
AS PER CODE OR AS SPECIFIED
(SEE NOTE 1)

BRICK VENEER c/w 1" (25mm)
AIR SPACE AND BRICK TIES

TREMCO EXOAIR 230,
ENVIRODRI OR FUNCTIONAL
EQUIVALENT

NOTES:

1) FOR OPTIMAL REINFORCEMENT PLACEMENT IN THE NUDURA FORM, SPACING OF HORIZONTAL REINFORCEMENT TO BE SPECIFIED AT 18" (457mm) O.C. AND VERTICAL REINFORCEMENT TO BE SPECIFIED AT MULTIPLES OF 8" (203mm) O.C. REFER TO NUDURA REINFORCEMENT PLACEMENT DETAILS.

2) AIR BARRIER/DRAINAGE FLASHINGS TO BE INSTALLED AROUND COMPLETE OPENING PERIMETER AS PER TREMCO/NUDURA APPLICATION INSTRUCTIONS OR AS DETAILED BY LOCAL APPLICABLE CODES (CODE GOVERNS)

This detail is for general informational purposes only. The project design professional determines, in its sole discretion, whether this detail or a functionally equivalent detail is best suited for the project with respect to any architecture, engineering, and design requirements, including any local building code requirements. If this document is not reviewed and the product is not approved for use by a licensed design professional, the customer agrees that the detail may contain substantive flaws requiring correction, and hereby releases Tremco CPG Inc. and Prebuck, LLC from any and all liability related to the design and installation of the product. This detail is subject to change without notice. Contact Tremco and Prebuck to ensure you have the most recent version.

Combustible Construction - Doors and Windows



Nudura Technical Support: 866-468-6299
International: +1 705-726-9499

Detail: Nudura 8" (203mm) Form Unit, Window Jamb Detail, Full Depth
Wood Rough Buck, Brick Veneer Finish

Drawn by: KS

Checked by: KS

Scale: 1:8

Revision #: 01

Revised by: KAB

Date: 3/13/2024

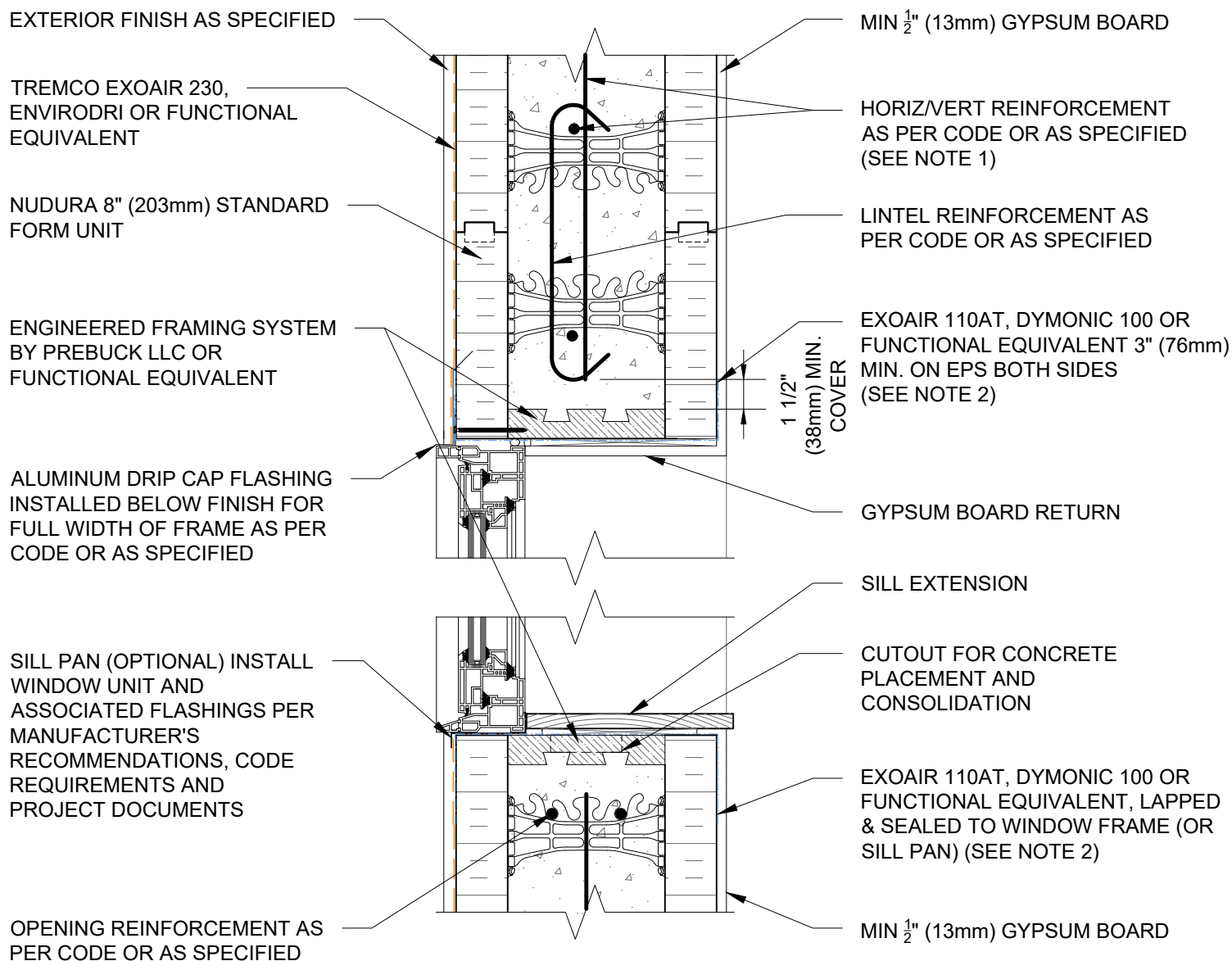
File Name:

E8A06



Construction Products Group

www.tremcocpg.com



NOTES:

1) FOR OPTIMAL REINFORCEMENT PLACEMENT IN THE NUDURA FORM, SPACING OF HORIZONTAL REINFORCEMENT TO BE SPECIFIED AT 18" (457mm) O.C. AND VERTICAL REINFORCEMENT TO BE SPECIFIED AT MULTIPLES OF 8" (203mm) O.C. REFER TO NUDURA REINFORCEMENT PLACEMENT DETAILS.

2) AIR BARRIER/DRAINAGE FLASHINGS TO BE INSTALLED AROUND COMPLETE OPENING PERIMETER AS PER TREMCO/NUDURA APPLICATION INSTRUCTIONS OR AS DETAILED BY LOCAL APPLICABLE CODES (CODE GOVERNS)

This detail is for general informational purposes only. The project design professional determines, in its sole discretion, whether this detail or a functionally equivalent detail is best suited for the project with respect to any architecture, engineering, and design requirements, including any local building code requirements. If this document is not reviewed and the product is not approved for use by a licensed design professional, the customer agrees that the detail may contain substantive flaws requiring correction, and hereby releases Tremco CPG Inc. and Prebuck, LLC from any and all liability related to the design and installation of the product. This detail is subject to change without notice. Contact Tremco and Prebuck to ensure you have the most recent version.

Combustible Construction - Doors and Windows



Nudura Technical Support: 866-468-6299
International: +1 705-726-9499

Detail: Nudura 8" (203mm) Form Unit, Window Head/Sill Detail,
Exterior Finish as Specified, Inset Wood Rough Buck

Drawn by: KS

Checked by: KS

Scale: 1:8

Revision #: 01

Revised by: KAB

Date: 3/13/2024

File Name:

E8C01



Construction Products Group

www.tremcocpg.com

OPENING REINFORCEMENT AS
PER CODE OR AS SPECIFIED

MIN 1/2" (13mm) GYPSUM BOARD

1 1/2"
(38mm) MIN.
COVER

NUDURA 8" (203mm)
STANDARD FORM UNIT

EXOAIR 110AT, DYMONIC 100
OR FUNCTIONAL EQUIVALENT
3" (76 mm) MIN. ON EPS BOTH
SIDES (SEE NOTE 2)

JAMB EXTENSION OR GYPSUM
BOARD RETURN

HORIZ/VERT REINFORCEMENT
AS PER CODE OR AS SPECIFIED
(SEE NOTE 1)

ENGINEERED FRAMING SYSTEM
BY PREBUCK LLC OR FUNCTIONAL
EQUIVALENT

EXTERIOR FINISH, AS
SPECIFIED

TREMCO EXOAIR 230,
ENVIRODRI OR FUNCTIONAL
EQUIVALENT

EXOAIR 110AT, DYMONIC 100 OR
FUNCTIONAL EQUIVALENT
SEALED TO EPS FOAM BEHIND
FINISH AS PER CODE OR AS
SPECIFIED

NOTES:

1) FOR OPTIMAL REINFORCEMENT PLACEMENT IN THE NUDURA FORM,
SPACING OF HORIZONTAL REINFORCEMENT TO BE SPECIFIED AT 18"
(457mm) O.C. AND VERTICAL REINFORCEMENT TO BE SPECIFIED AT
MULTIPLES OF 8" (203mm) O.C. REFER TO NUDURA REINFORCEMENT
PLACEMENT DETAILS.

2) AIR BARRIER/DRAINAGE FLASHINGS TO BE INSTALLED AROUND
COMPLETE OPENING PERIMETER AS PER TREMCO/NUDURA
APPLICATION INSTRUCTIONS OR AS DETAILED BY LOCAL APPLICABLE
CODES (CODE GOVERNS)

This detail is for general informational purposes only. The project design professional determines, in its sole discretion, whether this detail or a functionally equivalent detail is best suited for the project with respect to any architecture, engineering, and design requirements, including any local building code requirements. If this document is not reviewed and the product is not approved for use by a licensed design professional, the customer agrees that the detail may contain substantive flaws requiring correction, and hereby releases Tremco CPG Inc. and Prebuck, LLC from any and all liability related to the design and installation of the product. This detail is subject to change without notice. Contact Tremco and Prebuck to ensure you have the most recent version.

Combustible Construction - Doors and Windows



Nudura Technical Support: 866-468-6299
International: +1 705-726-9499

Detail: Nudura 8" (203mm) Form Unit, Window Jamb Detail, Inset Wood Rough Buck,
Exterior Finish as Specified

Drawn by: KS

Checked by: KS

Scale: 1:8

Revision #: 01

Revised by: KAB

Date: 3/13/2024

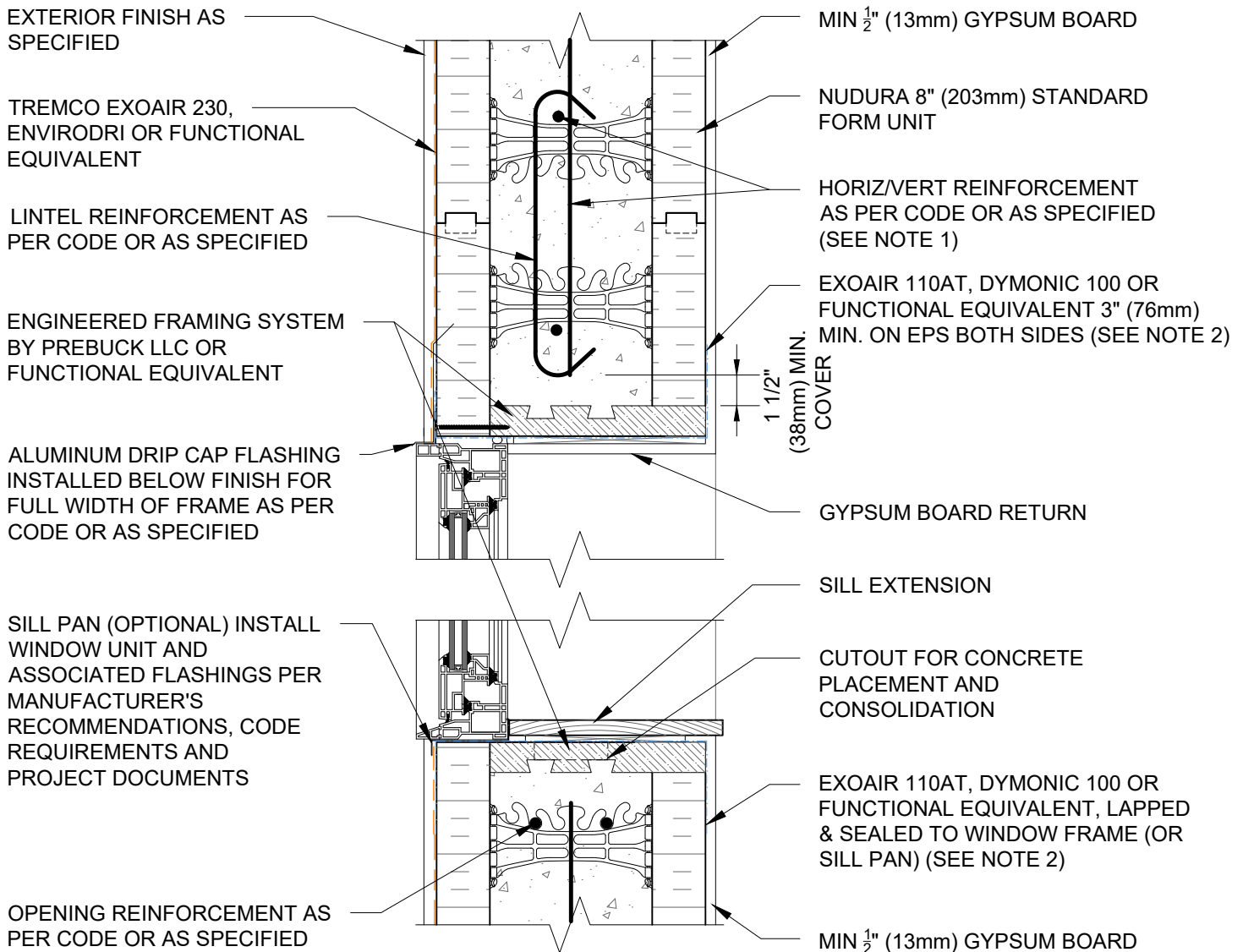
File Name:

E8C02



Construction Products Group

www.tremcocpg.com



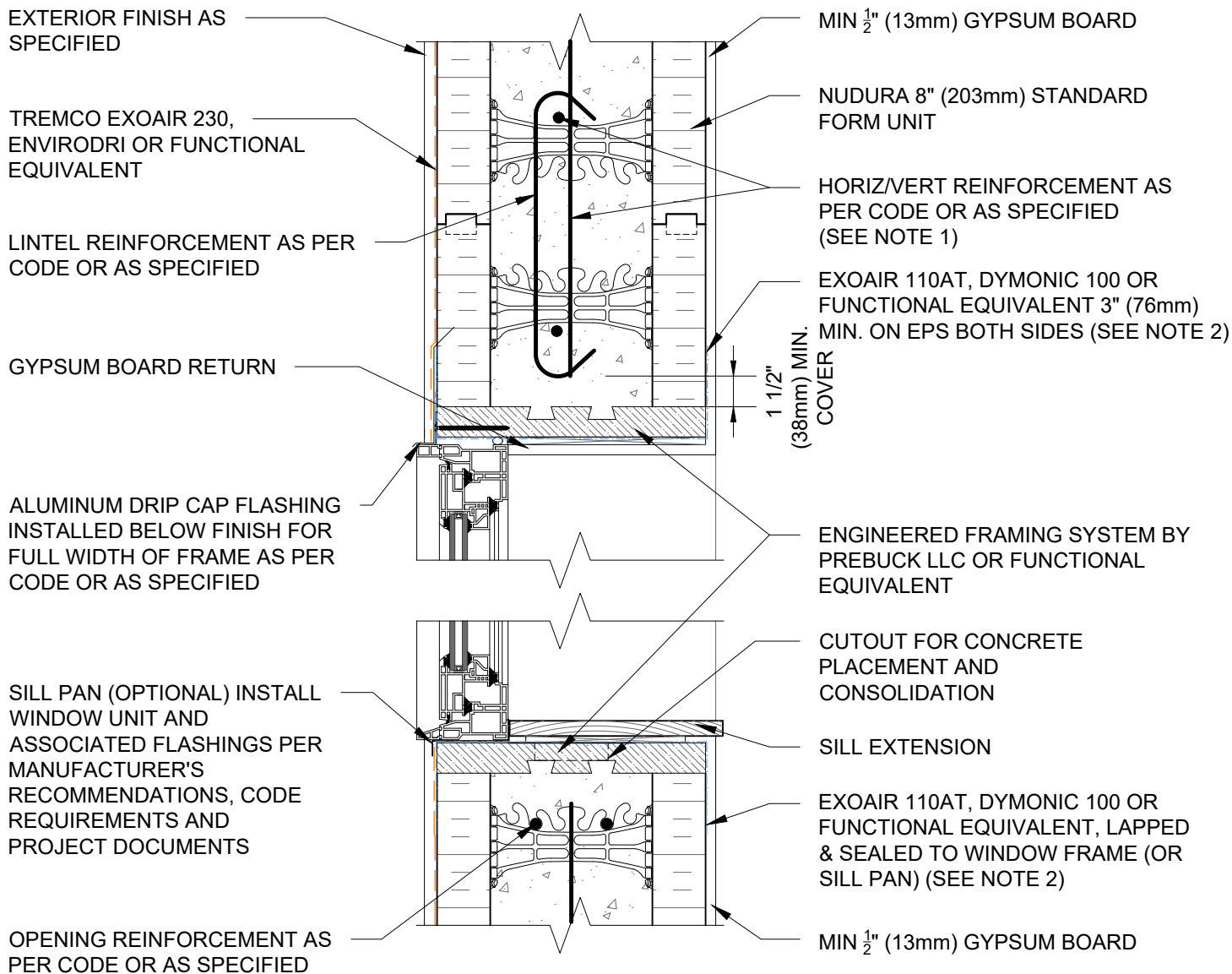
NOTES:

1) FOR OPTIMAL REINFORCEMENT PLACEMENT IN THE NUDURA FORM, SPACING OF HORIZONTAL REINFORCEMENT TO BE SPECIFIED AT 18" (457mm) O.C. AND VERTICAL REINFORCEMENT TO BE SPECIFIED AT MULTIPLES OF 8" (203mm) O.C. REFER TO NUDURA REINFORCEMENT PLACEMENT DETAILS.

2) AIR BARRIER/DRAINAGE FLASHINGS TO BE INSTALLED AROUND COMPLETE OPENING PERIMETER AS PER TREMCO/NUDURA APPLICATION INSTRUCTIONS OR AS DETAILED BY LOCAL APPLICABLE CODES (CODE GOVERNS)

This detail is for general informational purposes only. The project design professional determines, in its sole discretion, whether this detail or a functionally equivalent detail is best suited for the project with respect to any architecture, engineering, and design requirements, including any local building code requirements. If this document is not reviewed and the product is not approved for use by a licensed design professional, the customer agrees that the detail may contain substantive flaws requiring correction, and hereby releases Tremco CPG Inc. and Prebuck, LLC from any and all liability related to the design and installation of the product. This detail is subject to change without notice. Contact Tremco and Prebuck to ensure you have the most recent version.

Combustible Construction - Doors and Windows



NOTES:

- 1) FOR OPTIMAL REINFORCEMENT PLACEMENT IN THE NUDURA FORM, SPACING OF HORIZONTAL REINFORCEMENT TO BE SPECIFIED AT 18" (457mm) O.C. AND VERTICAL REINFORCEMENT TO BE SPECIFIED AT MULTIPLES OF 8" (203mm) O.C. REFER TO NUDURA REINFORCEMENT PLACEMENT DETAILS.
- 2) AIR BARRIER/DRAINAGE FLASHINGS TO BE INSTALLED AROUND COMPLETE OPENING PERIMETER AS PER TREMCO/NUDURA APPLICATION INSTRUCTIONS OR AS DETAILED BY LOCAL APPLICABLE CODES (CODE GOVERNS)

This detail is for general informational purposes only. The project design professional determines, in its sole discretion, whether this detail or a functionally equivalent detail is best suited for the project with respect to any architecture, engineering, and design requirements, including any local building code requirements. If this document is not reviewed and the product is not approved for use by a licensed design professional, the customer agrees that the detail may contain substantive flaws requiring correction, and hereby releases Tremco CPG Inc. and Prebuck, LLC from any and all liability related to the design and installation of the product. This detail is subject to change without notice. Contact Tremco and Prebuck to ensure you have the most recent version.

Combustible Construction - Doors and Windows



Nudura Technical Support: 866-468-6299
International: +1 705-726-9499

Detail: Nudura 8" (203mm) Form Unit, Window Head/Sill Detail,
Exterior Finish as Specified, Full Depth Wood Rough Buck

Drawn by: KS

Checked by: KS

Scale: 1:8

Revision #: 01

Revised by: KAB

Date: 3/13/2024

File Name:

E8C04



Construction Products Group

www.tremcocpg.com

OPENING REINFORCEMENT AS
PER CODE OR AS SPECIFIED

MIN $\frac{1}{2}$ " (13mm) GYPSUM BOARD

1 1/2"
(38mm) MIN.
COVER

NUDURA 8" (203mm)
STANDARD FORM UNIT

EXOAIR 110AT, DYMONIC 100
OR FUNCTIONAL EQUIVALENT
3" (76 mm) MIN. ON EPS BOTH
SIDES (SEE NOTE 2)

JAMB EXTENSION OR GYPSUM
BOARD RETURN

HORIZ/VERT REINFORCEMENT
AS PER CODE OR AS SPECIFIED
(SEE NOTE 1)

EXTERIOR FINISH AS
SPECIFIED

TREMCO EXOAIR 230,
ENVIRODRI OR FUNCTIONAL
EQUIVALENT

ENGINEERED FRAMING SYSTEM
BY PREBUCK LLC OR FUNCTIONAL
EQUIVALENT

EXOAIR 110AT, DYMONIC 100 OR
FUNCTIONAL EQUIVALENT
SEALED TO EPS FOAM BEHIND
FINISH AS PER CODE OR AS
SPECIFIED

NOTES:

1) FOR OPTIMAL REINFORCEMENT PLACEMENT IN THE NUDURA FORM,
SPACING OF HORIZONTAL REINFORCEMENT TO BE SPECIFIED AT 18"
(457mm) O.C. AND VERTICAL REINFORCEMENT TO BE SPECIFIED AT
MULTIPLES OF 8" (203mm) O.C. REFER TO NUDURA REINFORCEMENT
PLACEMENT DETAILS.

2) AIR BARRIER/DRAINAGE FLASHINGS TO BE INSTALLED AROUND
COMPLETE OPENING PERIMETER AS PER TREMCO/NUDURA
APPLICATION INSTRUCTIONS OR AS DETAILED BY LOCAL APPLICABLE
CODES (CODE GOVERNS)

This detail is for general informational purposes only. The project design professional determines, in its sole discretion, whether this detail or a functionally equivalent detail is best suited for the project with respect to any architecture, engineering, and design requirements, including any local building code requirements. If this document is not reviewed and the product is not approved for use by a licensed design professional, the customer agrees that the detail may contain substantive flaws requiring correction, and hereby releases Tremco CPG Inc. and Prebuck, LLC from any and all liability related to the design and installation of the product. This detail is subject to change without notice. Contact Tremco and Prebuck to ensure you have the most recent version.

Combustible Construction - Doors and Windows



Nudura Technical Support: 866-468-6299
International: +1 705-726-9499

Detail: Nudura 8" (203mm) Form Unit, Window Jamb Detail, Partial Depth
Wood Rough Buck, Exterior Finish as Specified

Drawn by: KS

Checked by: KS

Scale: 1:8

Revision #: 01

Revised by: KAB

Date: 3/13/2024

File Name:

E8C05



Construction Products Group

www.tremcocpg.com

OPENING REINFORCEMENT AS
PER CODE OR AS SPECIFIED

MIN $\frac{1}{2}$ " (13mm) GYPSUM BOARD

1 1/2"
(38mm) MIN.
COVER

NUDURA 8" (203mm)
STANDARD FORM UNIT

EXOAIR 110AT, DYMONIC 100
OR FUNCTIONAL EQUIVALENT
3" (76 mm) MIN. ON EPS BOTH
SIDES (SEE NOTE 2)

JAMB EXTENSION OR GYPSUM
BOARD RETURN

HORIZ/VERT REINFORCEMENT
AS PER CODE OR AS SPECIFIED
(SEE NOTE 1)

ENGINEERED FRAMING SYSTEM
BY PREBUCK LLC OR FUNCTIONAL
EQUIVALENT

EXTERIOR FINISH AS
SPECIFIED

EXOAIR 110AT, DYMONIC 100 OR
FUNCTIONAL EQUIVALENT
SEALED TO EPS FOAM BEHIND
FINISH AS PER CODE OR AS
SPECIFIED

TREMCO EXOAIR 230,
ENVIRODRI OR FUNCTIONAL
EQUIVALENT

NOTES:

1) FOR OPTIMAL REINFORCEMENT PLACEMENT IN THE NUDURA FORM,
SPACING OF HORIZONTAL REINFORCEMENT TO BE SPECIFIED AT 18"
(457mm) O.C. AND VERTICAL REINFORCEMENT TO BE SPECIFIED AT
MULTIPLES OF 8" (203mm) O.C. REFER TO NUDURA REINFORCEMENT
PLACEMENT DETAILS.

2) AIR BARRIER/DRAINAGE FLASHINGS TO BE INSTALLED AROUND
COMPLETE OPENING PERIMETER AS PER TREMCO/NUDURA
APPLICATION INSTRUCTIONS OR AS DETAILED BY LOCAL APPLICABLE
CODES (CODE GOVERNS)

This detail is for general informational purposes only. The project design professional determines, in its sole discretion, whether this detail or a functionally equivalent detail is best suited for the project with respect to any architecture, engineering, and design requirements, including any local building code requirements. If this document is not reviewed and the product is not approved for use by a licensed design professional, the customer agrees that the detail may contain substantive flaws requiring correction, and hereby releases Tremco CPG Inc. and Prebuck, LLC from any and all liability related to the design and installation of the product. This detail is subject to change without notice. Contact Tremco and Prebuck to ensure you have the most recent version.

Combustible Construction - Doors and Windows



Nudura Technical Support: 866-468-6299
International: +1 705-726-9499

Detail: Nudura 8" (203mm) Form Unit, Window Jamb Detail, Full Depth
Wood Rough Buck, Exterior Finish as Specified

Drawn by: KS

Checked by: KS

Scale: 1:8

Revision #: 01

Revised by: KAB

Date: 3/13/2024

File Name:

E8C06



Construction Products Group

www.tremcocpg.com

NUDURA 8" (203mm)
STANDARD FORM UNIT

BRICK VENEER c/w 1"
(25mm) AIR SPACE AND
BRICK TIES

WEEP HOLES AND
THROUGH WALL
FLASHING AS PER
CODE OR AS
SPECIFIED

STEEL LINTEL c/w
CONTINUOUS
CAULKING AT
FRAME

BRICK VENEER BEYOND

THRESHOLD

EXTERIOR CONCRETE
SLAB AND SLOPE AS
PER CODE

NUDURA 8" (203mm) BRICK
LEDGE FORM UNIT
BEYOND

TREMCO TREMDRAIN AS
SPECIFIED AND/OR
TREMCO PROTECTION
BOARD

TREMCO/NUDURA APPROVED
FLUID APPLIED OR SHEET
WATERPROOFING MEMBRANE

HORIZ/VERT REINFORCEMENT
AS PER CODE OR AS
SPECIFIED (SEE NOTE 1)

TREMCO EXOAIR 230,
ENVIRODRI OR FUNCTIONAL
EQUIVALENT

MIN 1/2" (13mm) GYPSUM BOARD

LINTEL REINFORCEMENT
AS PER CODE OR AS
SPECIFIED

1 1/2"
(38mm) MIN.
COVER

INTEGRATED STEEL
FRAMING ASSEMBLY

STEEL DOOR

FLOOR FINISH AS SPECIFIED

BLOCKING BETWEEN JOISTS

FLOOR JOISTS/TRUSSES
AS SPECIFIED

PROPRIETARY EMBEDDED JOIST
ANCHORAGE SYSTEM OR
EQUIVALENT

MIN 1/2" (13mm) GYPSUM BOARD

NOTES:

1) FOR OPTIMAL REINFORCEMENT PLACEMENT IN THE NUDURA FORM, SPACING OF HORIZONTAL REINFORCEMENT TO BE SPECIFIED AT 18" (457mm) O.C. AND VERTICAL REINFORCEMENT TO BE SPECIFIED AT MULTIPLES OF 8" (203mm) O.C. REFER TO NUDURA REINFORCEMENT PLACEMENT DETAILS.

This detail is for general informational purposes only. The project design professional determines, in its sole discretion, whether this detail or a functionally equivalent detail is best suited for the project with respect to any architecture, engineering, and design requirements, including any local building code requirements. If this document is not reviewed and the product is not approved for use by a licensed design professional, the customer agrees that the detail may contain substantive flaws requiring correction, and hereby releases Tremco CPG Inc. from any and all liability related to the design and installation of the product. This detail is subject to change without notice. Contact Tremco to ensure you have the most recent version.

Combustible Construction - Doors and Windows



Nudura Technical Support: 866-468-6299
International: +1 705-726-9499

Detail: Nudura 8" (203mm) Form Unit, Door Head/Sill Detail, Brick
Veneer Finish, Wood Rough Buck

Drawn by: JN

Checked by: KS

Scale: 1:8

Revision #: 05

Revised by: KAB

Date: 3/13/2024

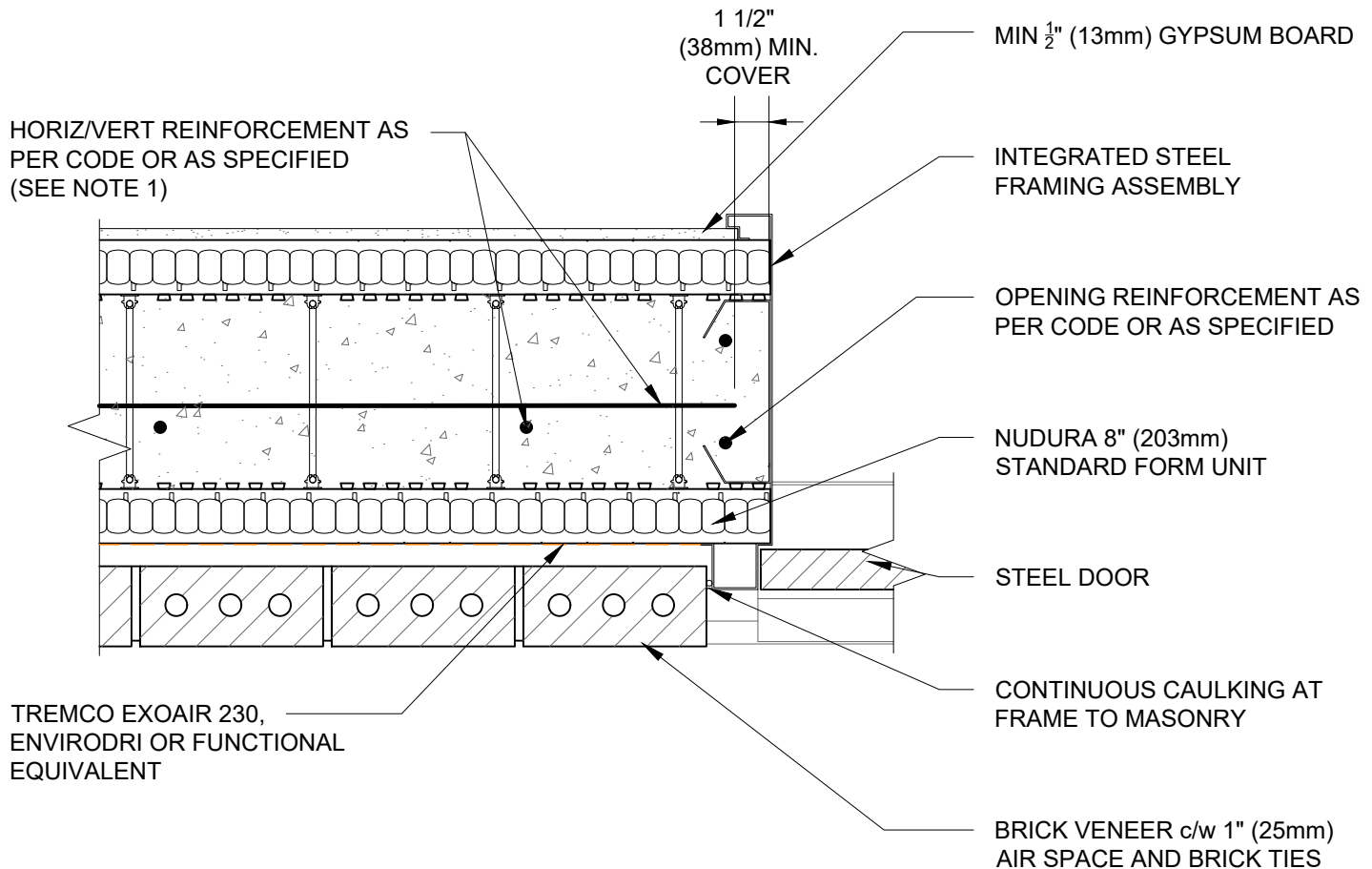
File Name:

E8E03



Construction Products Group

www.tremcocpg.com



NOTES:

1) FOR OPTIMAL REINFORCEMENT PLACEMENT IN THE NUDURA FORM, SPACING OF HORIZONTAL REINFORCEMENT TO BE SPECIFIED AT 18" (457mm) O.C. AND VERTICAL REINFORCEMENT TO BE SPECIFIED AT MULTIPLES OF 8" (203mm) O.C. REFER TO NUDURA REINFORCEMENT PLACEMENT DETAILS.

This detail is for general informational purposes only. The project design professional determines, in its sole discretion, whether this detail or a functionally equivalent detail is best suited for the project with respect to any architecture, engineering, and design requirements, including any local building code requirements. If this document is not reviewed and the product is not approved for use by a licensed design professional, the customer agrees that the detail may contain substantive flaws requiring correction, and hereby releases Tremco CPG Inc. from any and all liability related to the design and installation of the product. This detail is subject to change without notice. Contact Tremco to ensure you have the most recent version.

Combustible Construction - Doors and Windows



Nudura Technical Support: 866-468-6299
International: +1 705-726-9499

Detail: Nudura 8" (203mm) Form Unit, Door Jamb Detail, Brick Veneer Finish, Metal Door Frame

Drawn by: JN

Checked by: KS

Scale: 1:8

Revision #: 02

Revised by: KAB

Date: 3/13/2024

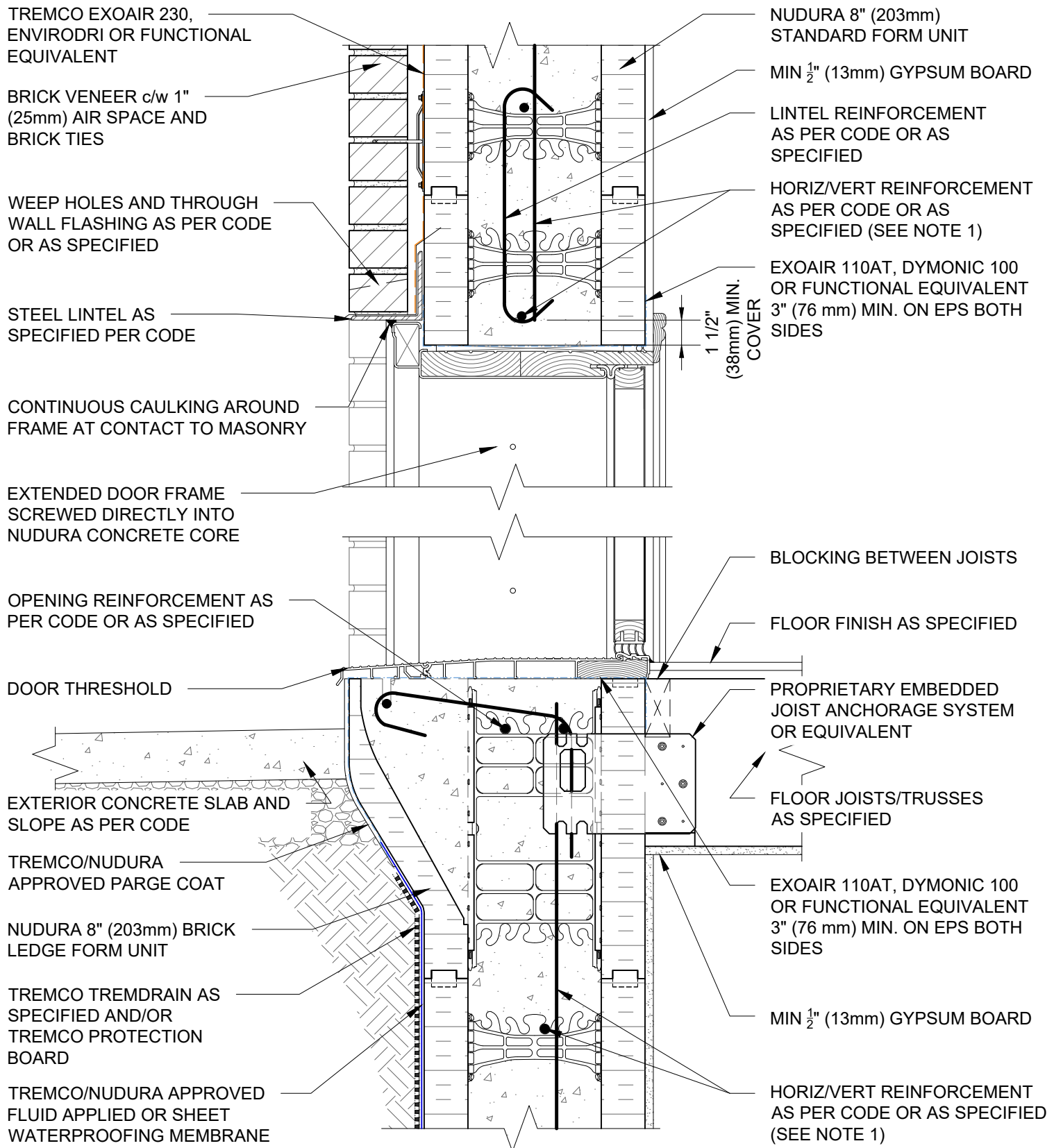
File Name:

E8E04



Construction Products Group

www.tremcocpg.com



NOTES:

1) FOR OPTIMAL REINFORCEMENT PLACEMENT IN THE NUDURA FORM, SPACING OF HORIZONTAL REINFORCEMENT TO BE SPECIFIED AT 18" (457mm) O.C. AND VERTICAL REINFORCEMENT TO BE SPECIFIED AT MULTIPLES OF 8" (203mm) O.C. REFER TO NUDURA REINFORCEMENT PLACEMENT DETAILS.

This detail is for general informational purposes, only. The project design professional determines, in its sole discretion, whether this detail or a functionally equivalent detail is best suited for the project with respect to any architecture, engineering, and design requirements, including any local building code requirements. If this document is not reviewed and the product is not approved for use by a licensed design professional, the customer agrees that the detail may contain substantive flaws requiring correction, and hereby releases Tremco CPG Inc. from any and all liability related to the design and installation of the product. This detail is subject to change without notice. Contact Tremco to ensure you have the most recent version.

Combustible Construction - Doors and Windows



Nudura Technical Support: 866-468-6299
International: +1 705-726-9499

Detail: Nudura 8" (203mm) Form Unit, Door Head/Threshold Detail,
Brick Veneer Finish

Drawn by: KS

Checked by: KS

Scale: 1:8

Revision #: 01

Revised by: KAB

Date: 3/13/2024

www.tremcocpg.com

File Name:

E8E07



Construction Products Group

HORIZ/VERT REINFORCEMENT AS PER CODE OR AS SPECIFIED (SEE NOTE 1)

1 1/2" (38mm) MIN. COVER

MIN 1/2" (13mm) GYPSUM BOARD

WOOD OR INSULATED STEEL DOOR

OPENING REINFORCEMENT AS PER CODE OR AS SPECIFIED

EXOAIR 110AT, DYMONIC 100 OR FUNCTIONAL EQUIVALENT 3" (76 mm) MIN. ON EPS BOTH SIDES

NUDURA 8" (203mm) STANDARD FORM UNIT

CONTINUOUS CAULKING AT FRAME TO MASONRY

BRICK VENEER c/w 1" (25mm) AIR SPACE AND BRICK TIES

TREMCO EXOAIR 230, ENVIRODRI OR FUNCTIONAL EQUIVALENT

NOTES:

1) FOR OPTIMAL REINFORCEMENT PLACEMENT IN THE NUDURA FORM, SPACING OF HORIZONTAL REINFORCEMENT TO BE SPECIFIED AT 18" (457mm) O.C. AND VERTICAL REINFORCEMENT TO BE SPECIFIED AT MULTIPLES OF 8" (203mm) O.C. REFER TO NUDURA REINFORCEMENT PLACEMENT DETAILS.

This detail is for general informational purposes only. The project design professional determines, in its sole discretion, whether this detail or a functionally equivalent detail is best suited for the project with respect to any architecture, engineering, and design requirements, including any local building code requirements. If this document is not reviewed and the product is not approved for use by a licensed design professional, the customer agrees that the detail may contain substantive flaws requiring correction, and hereby releases Tremco CPG Inc. from any and all liability related to the design and installation of the product. This detail is subject to change without notice. Contact Tremco to ensure you have the most recent version.

Combustible Construction - Doors and Windows



Nudura Technical Support: 866-468-6299
International: +1 705-726-9499

Detail: Nudura 8" (203mm) Form Unit, Door Jamb Detail, Brick Veneer Finish

Drawn by: KS

Checked by: KS

Scale: 1:8

Revision #: 01

Revised by: KAB

Date: 3/13/2024

File Name:

E8E08



Construction Products Group

www.tremcocpg.com

NUDURA 8" (203mm) STANDARD
FORM UNIT

TREMCO EXOAIR 230,
ENVIRODRI OR FUNCTIONAL
EQUIVALENT

EXTERIOR FINISH AS
SPECIFIED

HORIZ/VERT REINFORCEMENT
AS PER CODE OR AS
SPECIFIED (SEE NOTE 1)

MIN $\frac{1}{2}$ " (13mm) GYPSUM BOARD

LINTEL REINFORCEMENT
AS PER CODE OR AS
SPECIFIED

1 $\frac{1}{2}$ "
(38mm) MIN.
COVER

INTEGRATED STEEL
FRAMING ASSEMBLY

STEEL DOOR

THRESHOLD

EXTERIOR CONCRETE
SLAB AND SLOPE AS
PER CODE

FLOOR FINISH AS SPECIFIED

BLOCKING BETWEEN JOISTS

FLOOR JOISTS/TRUSSES
AS SPECIFIED

TREMCO TREMDRAIN AS
SPECIFIED AND/OR
TREMCO PROTECTION
BOARD

PROPRIETARY EMBEDDED
JOIST ANCHORAGE SYSTEM
OR EQUIVALENT

TREMCO/NUDURA APPROVED
FLUID APPLIED OR SHEET
WATERPROOFING MEMBRANE

MIN $\frac{1}{2}$ " (13mm) GYPSUM BOARD

NOTES:

1) FOR OPTIMAL REINFORCEMENT PLACEMENT IN THE NUDURA FORM, SPACING OF HORIZONTAL REINFORCEMENT TO BE SPECIFIED AT 18" (457mm) O.C. AND VERTICAL REINFORCEMENT TO BE SPECIFIED AT MULTIPLES OF 8" (203mm) O.C. REFER TO NUDURA REINFORCEMENT PLACEMENT DETAILS.

This detail is for general informational purposes, only. The project design professional determines, in its sole discretion, whether this detail or a functionally equivalent detail is best suited for the project with respect to any architecture, engineering, and design requirements, including any local building code requirements. If this document is not reviewed and the product is not approved for use by a licensed design professional, the customer agrees that the detail may contain substantive flaws requiring correction, and hereby releases Tremco CPG Inc. from any and all liability related to the design and installation of the product. This detail is subject to change without notice. Contact Tremco to ensure you have the most recent version.

Combustible Construction - Doors and Windows



Nudura Technical Support: 866-468-6299
International: +1 705-726-9499

Detail: Nudura 8" (203mm) Form Unit, Door Head/Sill Detail, Metal Door Frame,
Exterior Finish as Specified

Drawn by: TVC

Checked by: KS

Scale: 1:8

Revision #: 04

Revised by: KAB

Date: 3/13/2024

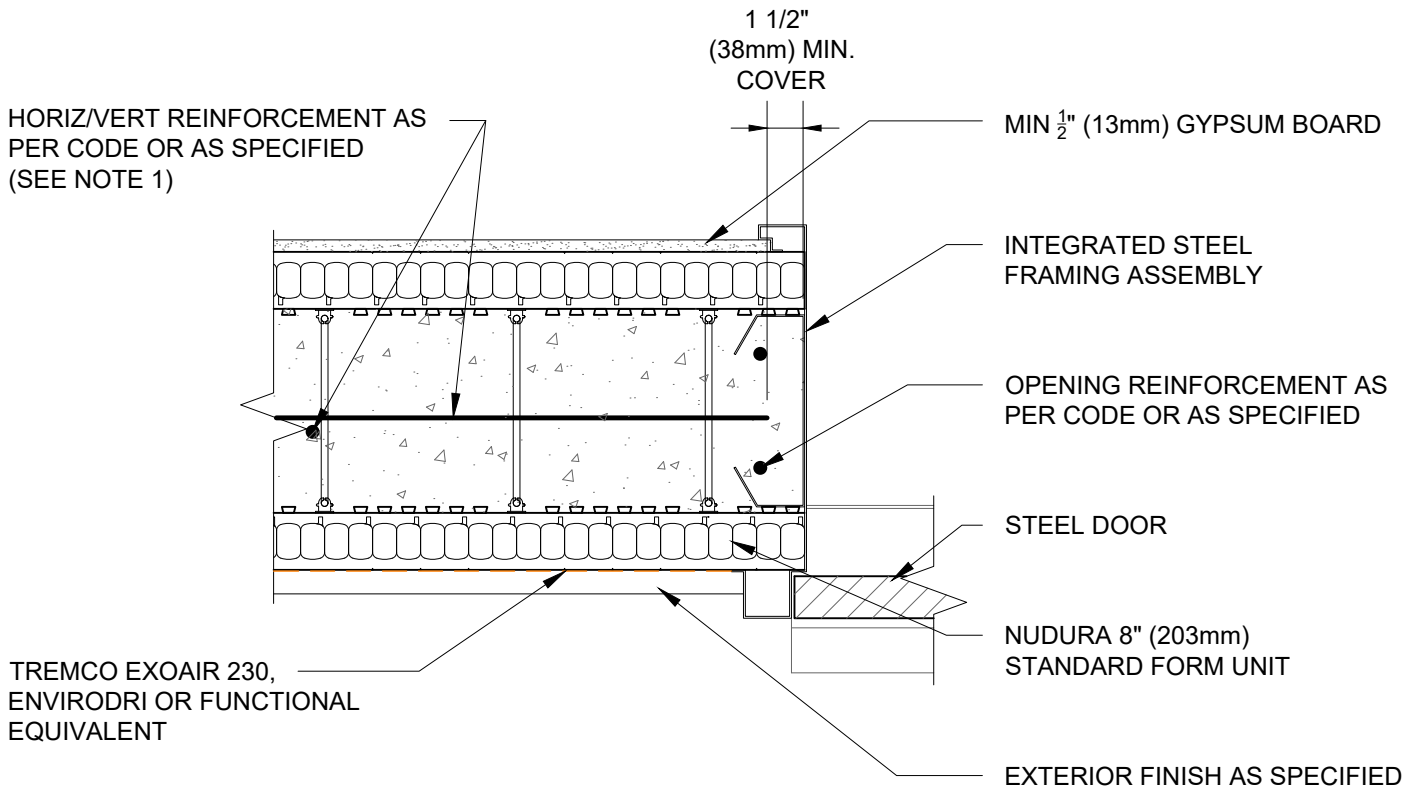
File Name:

E8G04



Construction Products Group

www.tremcocpg.com



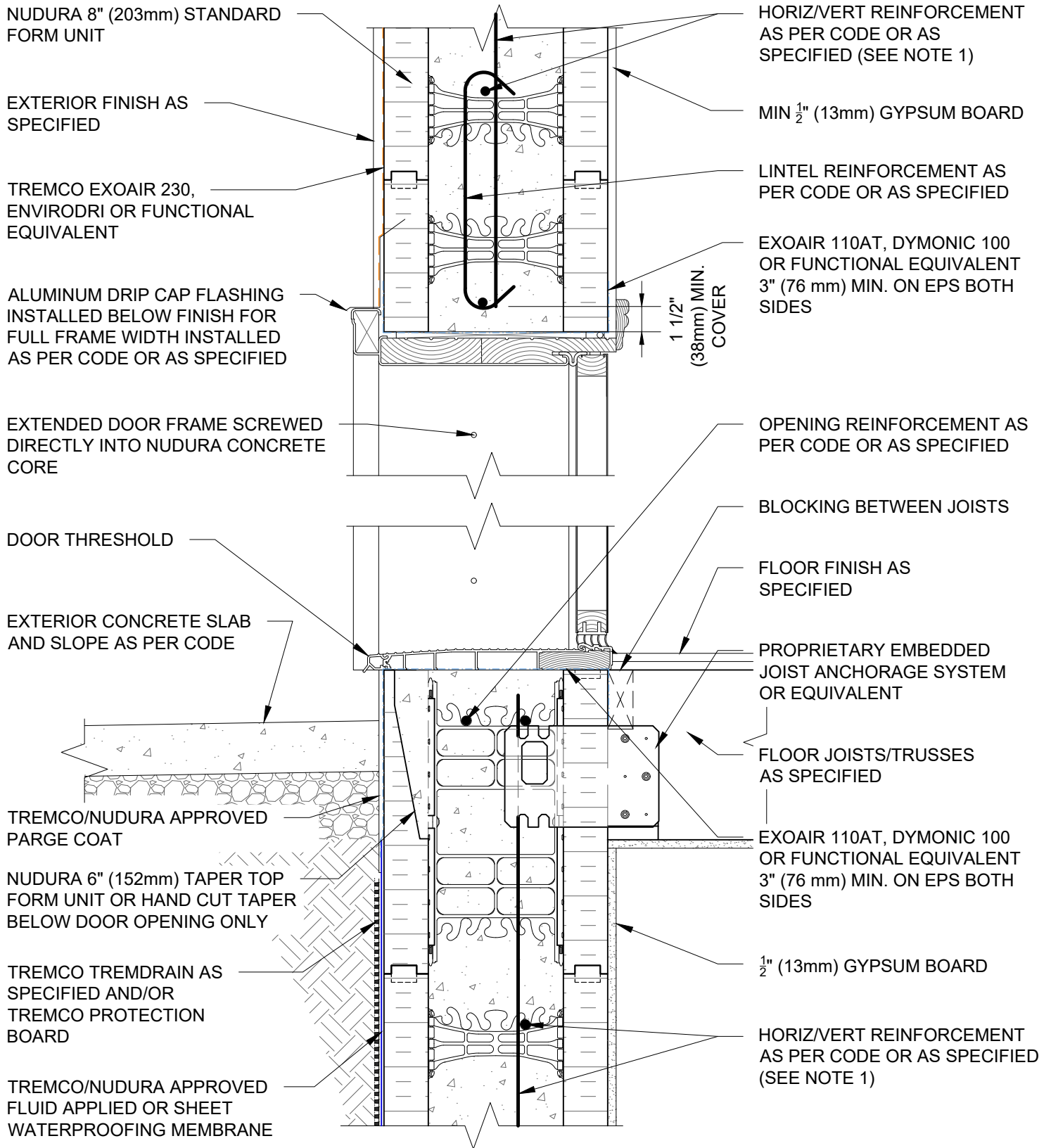
NOTES:

1) FOR OPTIMAL REINFORCEMENT PLACEMENT IN THE NUDURA FORM, SPACING OF HORIZONTAL REINFORCEMENT TO BE SPECIFIED AT 18" (457mm) O.C. AND VERTICAL REINFORCEMENT TO BE SPECIFIED AT MULTIPLES OF 8" (203mm) O.C. REFER TO NUDURA REINFORCEMENT PLACEMENT DETAILS.

This detail is for general informational purposes only. The project design professional determines, in its sole discretion, whether this detail or a functionally equivalent detail is best suited for the project with respect to any architecture, engineering, and design requirements, including any local building code requirements. If this document is not reviewed and the product is not approved for use by a licensed design professional, the customer agrees that the detail may contain substantive flaws requiring correction, and hereby releases Tremco CPG Inc. from any and all liability related to the design and installation of the product. This detail is subject to change without notice. Contact Tremco to ensure you have the most recent version.

Combustible Construction - Doors and Windows

 Nudura Technical Support: 866-468-6299 International: +1 705-726-9499	Detail: Nudura 8" (203mm) Form Unit, Door Jamb Detail, Steel Door Frame, Exterior Finish as Specified			File Name: E8G05	 Construction Products Group
	Drawn by: TVC	Checked by: KS	Scale: 1:8		
	Revision #: 04	Revised by: KAB	Date: 3/13/2024		
	www.tremcocpa.com				



NOTES:

1) FOR OPTIMAL REINFORCEMENT PLACEMENT IN THE NUDURA FORM, SPACING OF HORIZONTAL REINFORCEMENT TO BE SPECIFIED AT 18" (457mm) O.C. AND VERTICAL REINFORCEMENT TO BE SPECIFIED AT MULTIPLES OF 8" (203mm) O.C. REFER TO NUDURA REINFORCEMENT PLACEMENT DETAILS.

This detail is for general informational purposes, only. The project design professional determines, in its sole discretion, whether this detail or a functionally equivalent detail is best suited for the project with respect to any architecture, engineering, and design requirements, including any local building code requirements. If this document is not reviewed and the product is not approved for use by a licensed design professional, the customer agrees that the detail may contain substantive flaws requiring correction, and hereby releases Tremco CPG Inc. from any and all liability related to the design and installation of the product. This detail is subject to change without notice. Contact Tremco to ensure you have the most recent version.

Combustible Construction - Doors and Windows



Nudura Technical Support: 866-468-6299
International: +1 705-726-9499

Detail: Nudura 8" (203mm) Form Unit, Door Head/Threshold Detail,
Exterior Finish as Specified

Drawn by: KS

Checked by: KS

Scale: 1:8

Revision #: 01

Revised by: KAB

Date: 3/13/2024

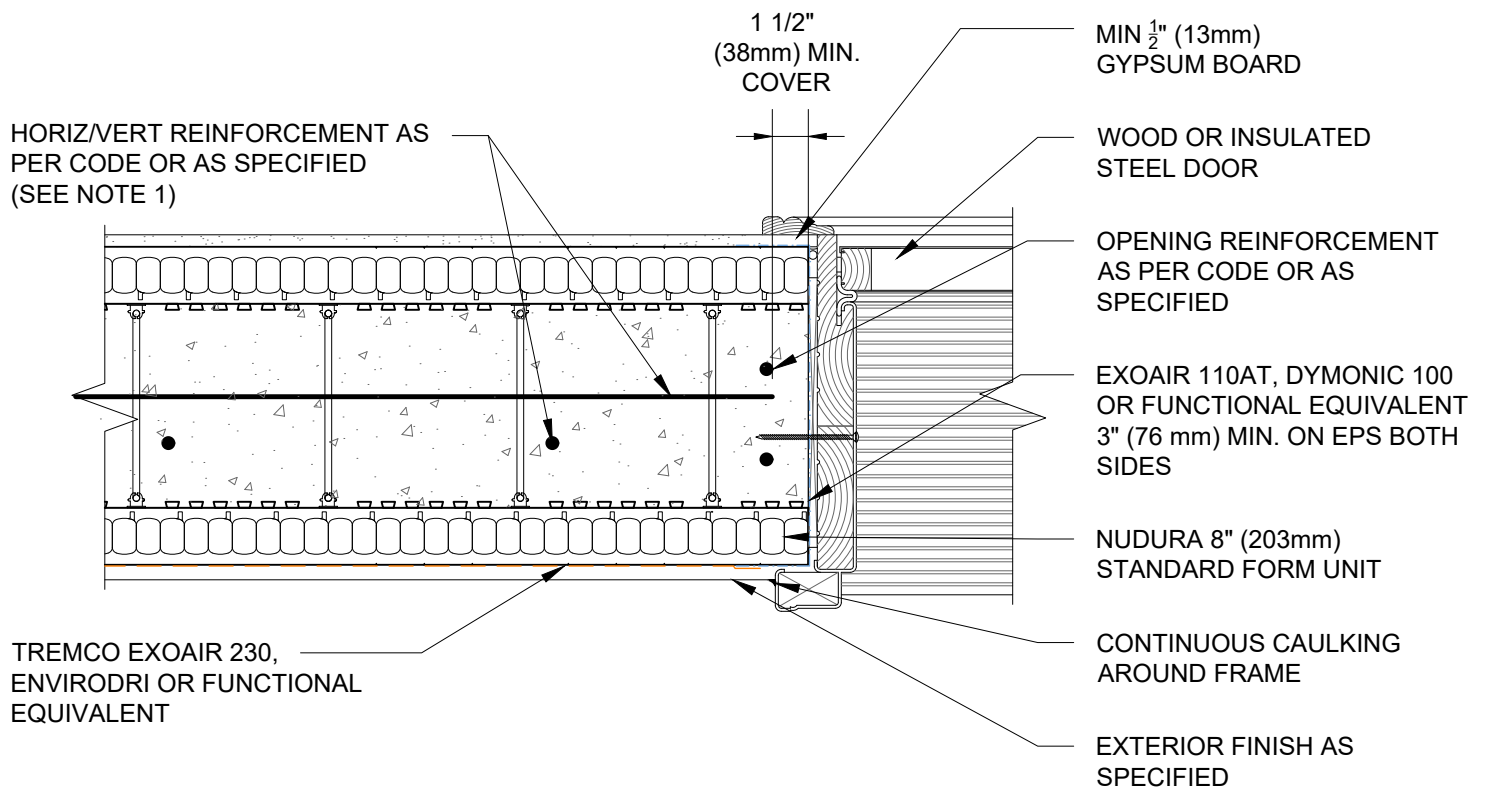
www.tremcocpg.com

File Name:

E8G08



Construction Products Group



NOTES:

1) FOR OPTIMAL REINFORCEMENT PLACEMENT IN THE NUDURA FORM, SPACING OF HORIZONTAL REINFORCEMENT TO BE SPECIFIED AT 18" (457mm) O.C. AND VERTICAL REINFORCEMENT TO BE SPECIFIED AT MULTIPLES OF 8" (203mm) O.C. REFER TO NUDURA REINFORCEMENT PLACEMENT DETAILS.

This detail is for general informational purposes only. The project design professional determines, in its sole discretion, whether this detail or a functionally equivalent detail is best suited for the project with respect to any architecture, engineering, and design requirements, including any local building code requirements. If this document is not reviewed and the product is not approved for use by a licensed design professional, the customer agrees that the detail may contain substantive flaws requiring correction, and hereby releases Tremco CPG Inc. from any and all liability related to the design and installation of the product. This detail is subject to change without notice. Contact Tremco to ensure you have the most recent version.

Combustible Construction - Doors and Windows



Nudura Technical Support: 866-468-6299
International: +1 705-726-9499

Detail: Nudura 8" (203mm) Form Unit, Door Jamb Detail,
Exterior Finish as Specified

Drawn by: KS

Checked by: KS

Scale: 1:8

Revision #: 01

Revised by: KAB

Date: 3/13/2024

File Name:

E8G09



Construction Products Group

www.tremcocpg.com