



# NUDURA ICF HOUSE PLAN

497-69

## Spacious Front and Back Porches

Take a glass of lemonade outside on a warm day and relax either in front of this home or in back. When it's time to wind down for the evening, the main suite welcomes you with a private bathroom.

## Why Choose Nudura ICFs for Your Insulated Concrete Form House?



### ENERGY SAVINGS

Say goodbye to high heating and cooling costs in your new ICF home. Nudura ICFs can help improve energy efficiency by up to 58%\* compared to traditional construction. [CLICK HERE](#) to learn more about how the solid mass of the Nudura ICF wall, combined with two continuous panels of EPS foam, help prevent energy loss through the wall.



### INDOOR AIR QUALITY

Your new home built with Nudura ICFs will be airtight, enabling mechanical systems to heat, cool and ventilate more efficiently and minimizing the potential formation of mold and draft paths. Nudura ICFs do not support mold growth, nor do they emit CFCs or HCFCs. [CLICK HERE](#) for more information about how Nudura ICFs protect occupants and the environment.



### DISASTER RESILIENCE

Nudura ICFs provide a fire protection rating of up to 4 Hours - 4 times that of a typical wood frame home. Structures built with Nudura ICFs also can withstand winds up to 250 mph (402 kph) ensuring your family and home are safe and secure in almost any situation. [CLICK HERE](#) to learn more about disaster resilient buildings with Insulated Concrete Forms.



### SOUND DAMPENING

Providing a minimum STC (Sound Transmission Class) rating of STC 50\*\*, Nudura ICFs act as an effective sound barrier by dampening sound vibrations from unwanted outside noise. [CLICK HERE](#) to learn more about how Nudura ICFs offer an effective sound proofing solution.

### Square Feet:

2147 sq ft

### Bedrooms:

3

### Bathrooms:

3.5

### Stories:

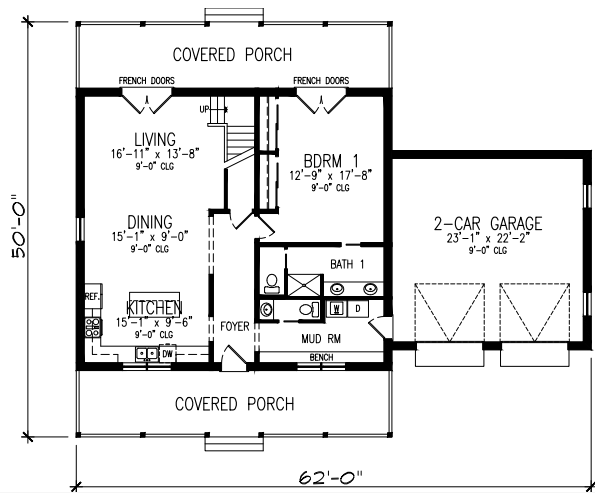
2

### Dimensions:

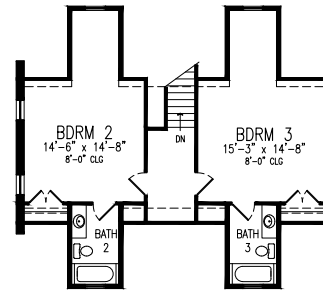
50' x 62'

*\*As proven by third-party testing conducted by CLEB Laboratories and the Insulating Concrete Forms Manufacturers Association (ICFMA).*

*\*\*STC 50 based on minimum 6" (152 mm) Nudura form concrete core thickness, installed with code compliant finishes mounted both sides of wall assembly in accordance with Nudura ICF installation procedures.*



First Story



Second Story

## Interested In Purchasing This Plan?

A full plan set for this home is available for immediate purchase from [houseplans.com](https://houseplans.com).

To purchase the plan set for this home, scan or click the QR code.



## Additional Renderings

